

Please note - This proposal assumes the developer will carry out all works as indicated on the plan and under the terms in the accompanying letter. If the developer is unable or unwilling to carry out these works as proposed, Openreach may alter the proposed layout and terms accordingly.



**Plant Symbols**

- Developer Proposed Duct
- 50mm PVC Duct
- 50mm PVC Duct
- BT Proposed Duct
- 50mm PVC Duct
- Existing PVC Duct
- Existing PVC Duct

4 Jointbox JBFT04 built to BT Specification  
 4 Proposed BT Built Box JBFT04  
 Existing Box JBFT04

Duct Tee  
 Duct 50/duct 55 Reducer

P23 Plot Number  
 A DP Identifier  
 B DP Location

**OPENREACH  
 COPPER PROPOSAL**

**Important Notice**  
 Openreach's jointing chambers (JB/JUF) are designed to be constructed in the footway and should in no circumstances be placed in surfaces that will eventually be adoptable carriageway. If you are in doubt as to whether a jointing chamber proposed by us will end up in adoptable carriageway you should contact your NewSite Rep. before work commences.

**IMPORTANT NOTE REGARDING THE DISTRIBUTION POINT**  
 Current regulations require the internal Distribution Point (DP) to be located within two metres from the duct entry point within the building. If you wish for the DP to be provided in an alternative location you will need to provide a cable tray to the desired location. Openreach will change the developer for any additional internal cabling and necessary cable jointing/terminations beyond the duct entry point.

Under no circumstances should external cable (grease-filled) be used internally. External cable must be terminated on entry to the building where it leaves the duct and internal cable used from then on within the building.  
 The Openreach network extends as far as the DP. Internal wiring beyond the DP is the responsibility of the customer to arrange. Openreach can assist in the provision of internal wiring - please see the accompanying 'making your infrastructure work for you' sheet for details.

**Plant on Map** Job Description: BIRSTALL LOCAL CENTRE, HALLLAM FIELDS ROAD

**Important Notice -** joint boxes (JB & JUF) must be constructed in non carriageway situations only. If there is any deviation from this please contact your newSite Representative before work commences.

GenSys 2.2.206 PRINT NOT TO SCALE

**Certified by** .....

**Date** .....

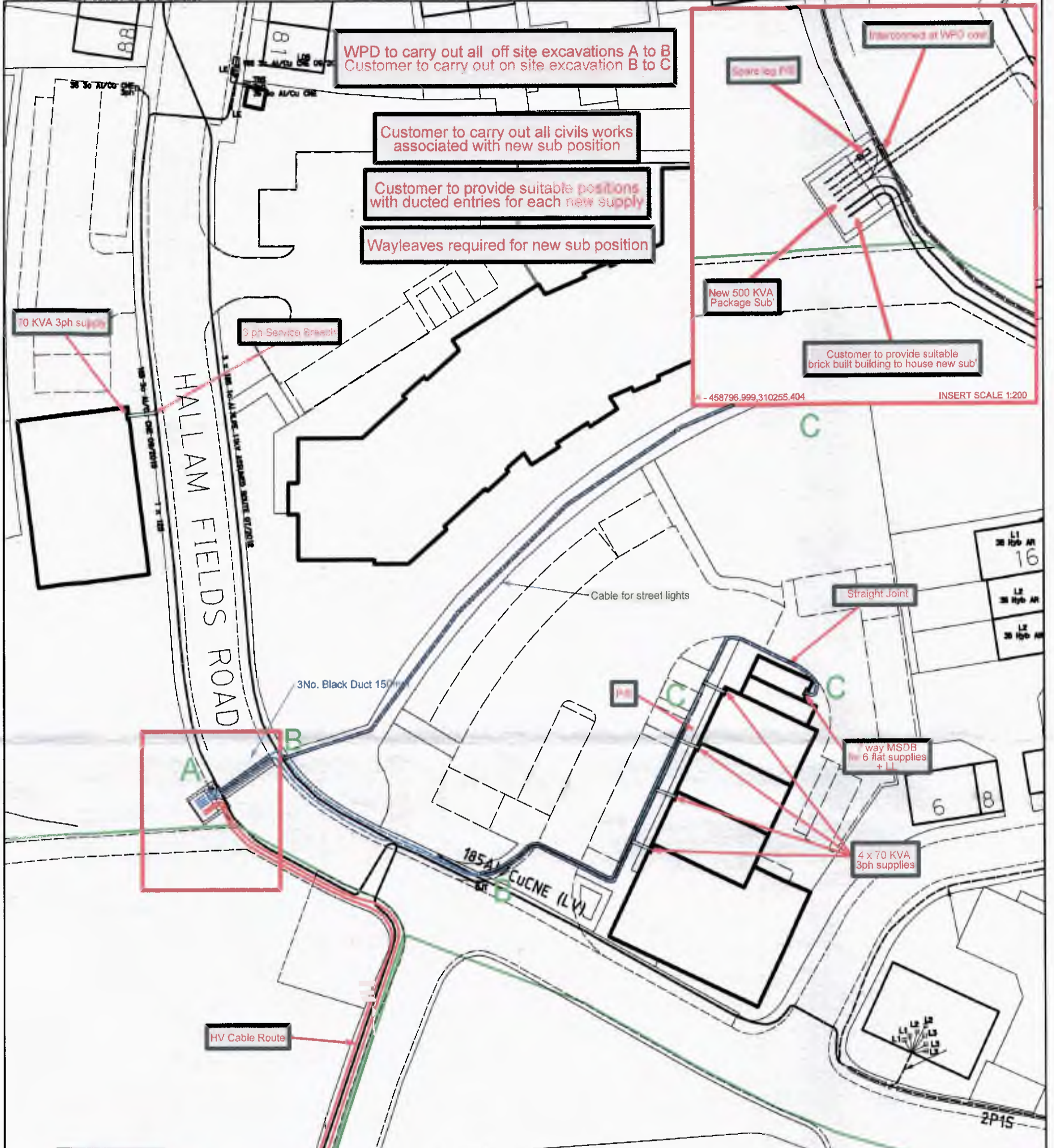
Exchange Area: BIRSTALL  
 Estimate Number: J1U/062-  
 Planned By: ALEX COBURN  
 NSI: J1U/062 Issue No: 1  
 Map Reference: SK5810  
 Date: 05/04/2016



PLEASE NOTE: This plan ONLY shows assets owned by Western Power Distribution. Electricity assets owned by IDNO's (Independent Network Operators) MAY be present in this area. Information is given as a guide only and its accuracy cannot be guaranteed.

WPD Copyright: This copy has been made by or with the authority of Western Power Distribution (WPD) pursuant to Section 47 of the Copyright Designs and Patents Act 1988 unless that Act provides a relevant exception to copyright the copy must not be copied without prior permission of the copyright owner.

Based upon the Ordnance Survey map with the permission of the Controller of Her Majesty's Stationery Office. Crown Copyright Reserved. Western Power Distribution, Avonbank, Feeder Road, Bristol, BS2 0TB. Licence No. 100022488, 100024877, 100021807. CARE SHOULD BE EXERCISED TO ENSURE THE PRECISE POSITION OF THE WPD APPARATUS IF WORK IS TO BE EXECUTED IN ITS VICINITY. If in doubt, contact your local WPD office.

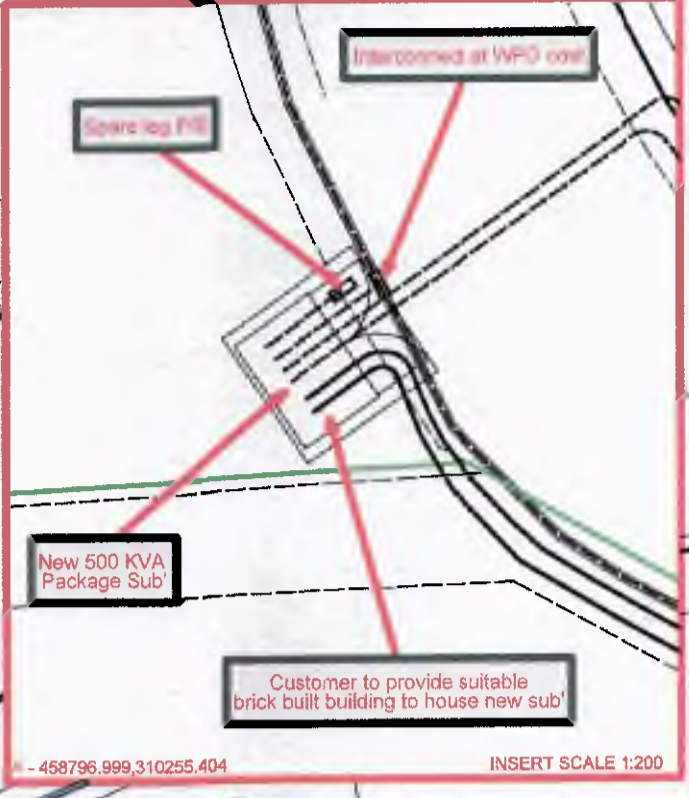


WPD to carry out all off site excavations A to B  
Customer to carry out on site excavation B to C

Customer to carry out all civils works associated with new sub position

Customer to provide suitable positions with ducted entries for each new supply

Wayleaves required for new sub position



REV.	DATE	SCHEME PROGRESS BLOCK	DRN	CHK'D
1	15/03/16			



TITLE  
 • New Local Centre  
 • Hallam Fields - LE4 3NS  
 • New Mixed Development

UNDERGROUND CABLES 132KV L.V.	33KV SERVICE LV EARTH	11KV STREET LTG. EARTH ELECTRODE	OVERHEAD LINES 132KV 11KV SERVICE	33KV L.V. STREET LTG.
SERVICES CABLE SIZES AS SHOWN			PYLON <input checked="" type="checkbox"/> POLE <input type="checkbox"/> STAY <input type="checkbox"/>	
DUCT & ALUMATHENE TUBE		HOUSE METER POSITIONS - EXTERNAL <input type="checkbox"/> INTERNAL <input type="checkbox"/>		
SURF TELECOMS		PILOT CABLES P - P		
PROPOSALS	ALTERATIONS	DISMANTLED		
TRAFFIC SENSITIVE AREA YES/NO				

DEVELOPER.  
 BUILDER.  
 ARCHITECT Drg. No.  
 O.S. MAP.  
 SCALE 1:500 @ A3  
 PARISH.  
 11KV DIAG.  
 LV. DIAG.  
 PLAN No.

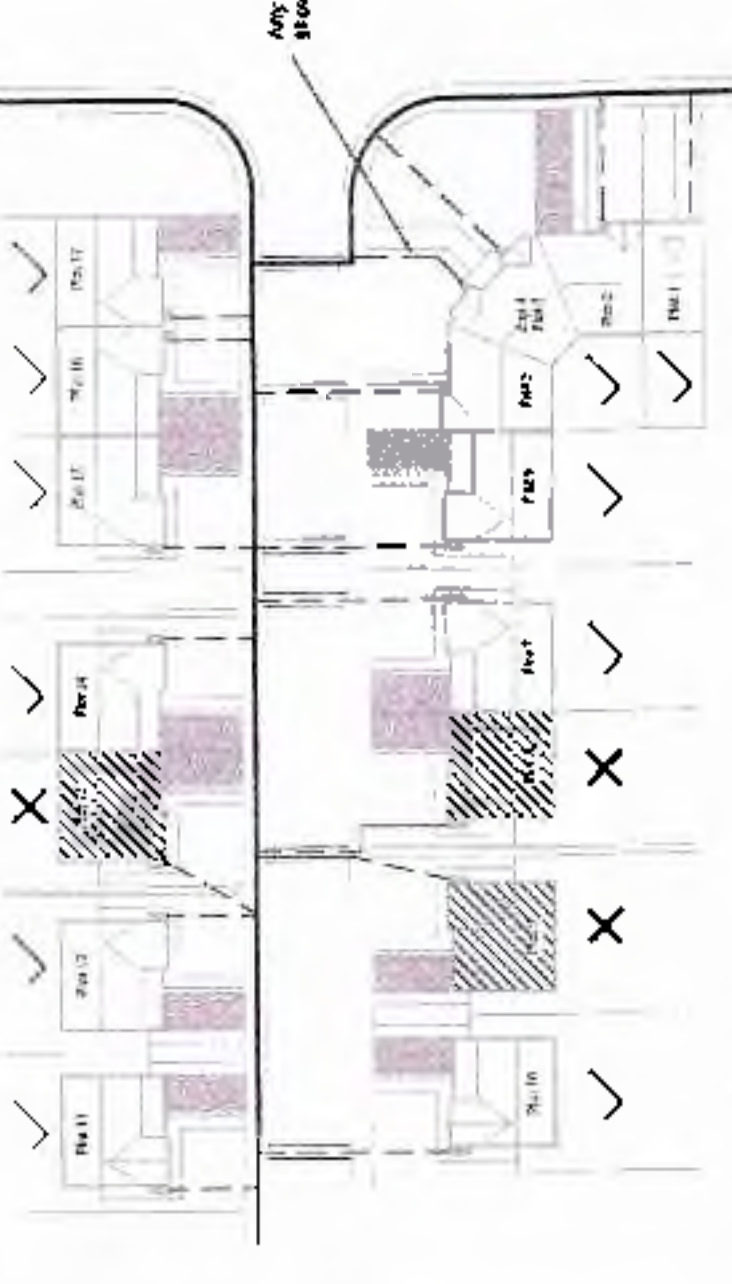


AS-LAID INFORMATION - Please note that as-laid records on this CAD drawing are indicative only. For the most up-to-date records, please contact ENVOY (the asset management company) direct on 02920 312065.

Gas Service - Route Selection Options



Reference to DCS N00097565



**ROUTE SELECTION OPTIONS**  
This table defines the route selection options for gas service. It lists various pipe materials and sizes, and indicates whether they are permitted or not for different types of service connections. The table includes columns for 'Pipe Material', 'Pipe Size', and 'Permitted'.

**ROUTE SELECTION OPTIONS**

Pipe Material	Pipe Size	Permitted
RIGID DUCT 87/3	25mm	
RIGID DUCT 87/3	32mm	
RIGID DUCT 87/3	40mm	
RIGID DUCT 87/3	50mm	
RIGID DUCT 87/3	75mm	
RIGID DUCT 87/3	100mm	
RIGID DUCT 87/3	125mm	
RIGID DUCT 87/3	150mm	
RIGID DUCT 87/3	200mm	

**PERMITTED SERVICE CONNECTIONS**

Service Connection	Permitted
Up to 10m	Yes
Up to 25m	Yes
Up to 50m	Yes
Up to 75m	Yes
Up to 100m	Yes

**ALL MAINS LAID ON THIS DRAWING MUST BE INSTALLED TO THE LATEST SPECIFICATION (G7/TD/3)**

**GENERAL NOTES**  
1. ALL MAINS LAID ON THIS DRAWING MUST BE INSTALLED TO THE LATEST SPECIFICATION (G7/TD/3).  
2. THE DRAWING IS FOR INFORMATION ONLY. IT DOES NOT REPRESENT A CONTRACT.  
3. ANY WORK SHOWN ON THIS DRAWING IS SUBJECT TO CHANGE WITHOUT NOTICE.  
4. THE DRAWING IS NOT TO BE USED FOR CONSTRUCTION WITHOUT THE APPROVAL OF THE DESIGNER.  
5. THE DRAWING IS NOT TO BE USED FOR ANY OTHER PURPOSE WITHOUT THE APPROVAL OF THE DESIGNER.

**REVISIONS**

No.	Date	Description
1	20/10/2011	Issue for Tender
2	20/10/2011	Issue for Tender
3	20/10/2011	Issue for Tender
4	20/10/2011	Issue for Tender
5	20/10/2011	Issue for Tender
6	20/10/2011	Issue for Tender
7	20/10/2011	Issue for Tender
8	20/10/2011	Issue for Tender
9	20/10/2011	Issue for Tender
10	20/10/2011	Issue for Tender
11	20/10/2011	Issue for Tender
12	20/10/2011	Issue for Tender
13	20/10/2011	Issue for Tender
14	20/10/2011	Issue for Tender
15	20/10/2011	Issue for Tender
16	20/10/2011	Issue for Tender
17	20/10/2011	Issue for Tender
18	20/10/2011	Issue for Tender
19	20/10/2011	Issue for Tender
20	20/10/2011	Issue for Tender
21	20/10/2011	Issue for Tender
22	20/10/2011	Issue for Tender
23	20/10/2011	Issue for Tender
24	20/10/2011	Issue for Tender
25	20/10/2011	Issue for Tender
26	20/10/2011	Issue for Tender
27	20/10/2011	Issue for Tender
28	20/10/2011	Issue for Tender
29	20/10/2011	Issue for Tender
30	20/10/2011	Issue for Tender
31	20/10/2011	Issue for Tender
32	20/10/2011	Issue for Tender
33	20/10/2011	Issue for Tender
34	20/10/2011	Issue for Tender
35	20/10/2011	Issue for Tender
36	20/10/2011	Issue for Tender
37	20/10/2011	Issue for Tender
38	20/10/2011	Issue for Tender
39	20/10/2011	Issue for Tender
40	20/10/2011	Issue for Tender
41	20/10/2011	Issue for Tender
42	20/10/2011	Issue for Tender
43	20/10/2011	Issue for Tender
44	20/10/2011	Issue for Tender
45	20/10/2011	Issue for Tender
46	20/10/2011	Issue for Tender
47	20/10/2011	Issue for Tender
48	20/10/2011	Issue for Tender
49	20/10/2011	Issue for Tender
50	20/10/2011	Issue for Tender
51	20/10/2011	Issue for Tender
52	20/10/2011	Issue for Tender
53	20/10/2011	Issue for Tender
54	20/10/2011	Issue for Tender
55	20/10/2011	Issue for Tender
56	20/10/2011	Issue for Tender
57	20/10/2011	Issue for Tender
58	20/10/2011	Issue for Tender
59	20/10/2011	Issue for Tender
60	20/10/2011	Issue for Tender
61	20/10/2011	Issue for Tender
62	20/10/2011	Issue for Tender
63	20/10/2011	Issue for Tender
64	20/10/2011	Issue for Tender
65	20/10/2011	Issue for Tender
66	20/10/2011	Issue for Tender
67	20/10/2011	Issue for Tender
68	20/10/2011	Issue for Tender
69	20/10/2011	Issue for Tender
70	20/10/2011	Issue for Tender
71	20/10/2011	Issue for Tender
72	20/10/2011	Issue for Tender
73	20/10/2011	Issue for Tender
74	20/10/2011	Issue for Tender
75	20/10/2011	Issue for Tender
76	20/10/2011	Issue for Tender
77	20/10/2011	Issue for Tender
78	20/10/2011	Issue for Tender
79	20/10/2011	Issue for Tender
80	20/10/2011	Issue for Tender
81	20/10/2011	Issue for Tender
82	20/10/2011	Issue for Tender
83	20/10/2011	Issue for Tender
84	20/10/2011	Issue for Tender
85	20/10/2011	Issue for Tender
86	20/10/2011	Issue for Tender
87	20/10/2011	Issue for Tender
88	20/10/2011	Issue for Tender
89	20/10/2011	Issue for Tender
90	20/10/2011	Issue for Tender
91	20/10/2011	Issue for Tender
92	20/10/2011	Issue for Tender
93	20/10/2011	Issue for Tender
94	20/10/2011	Issue for Tender
95	20/10/2011	Issue for Tender
96	20/10/2011	Issue for Tender
97	20/10/2011	Issue for Tender
98	20/10/2011	Issue for Tender
99	20/10/2011	Issue for Tender
100	20/10/2011	Issue for Tender

**CONNE**  
Registered Civil Engineer (No. 11200) - Category 2  
WWW.CONNE.CO.UK

OPERATIONS DEPARTMENT CO-ORDINATOR  
Communication Call Centre - 08 00 778 220

Designed By: DM DMH 26/10/11  
Drawn By: AM DMH 26/10/11  
Checked By: AB DMH 26/10/11  
Approved By: L Thomas DMH 26/10/11

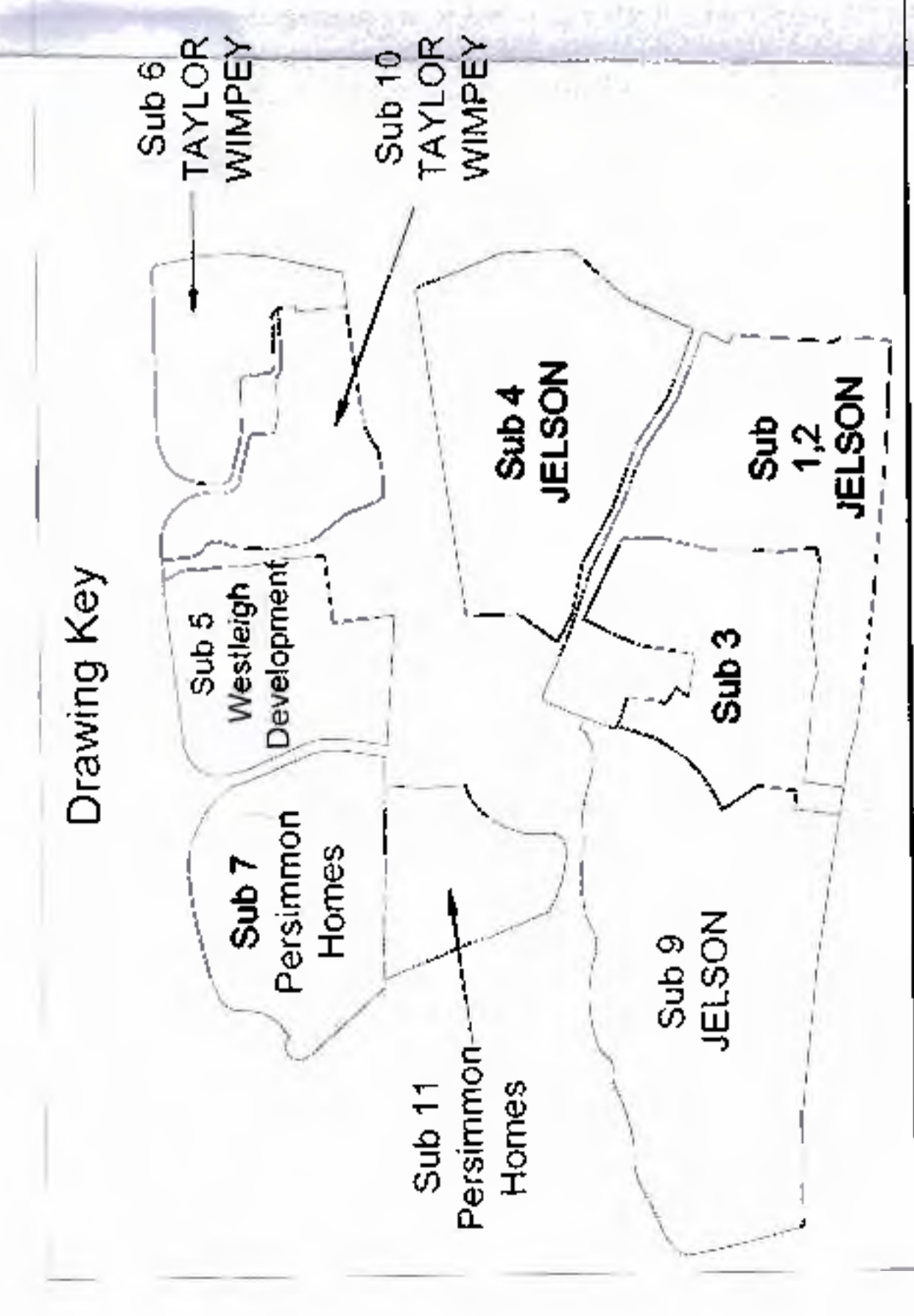
Project: A6 Hallam Flie

Location: Loughborough I  
Birstall, Leicestershire

Base On Drawing: P18, P19, P20, P21, P22, P23, P24, P25, P26, P27, P28, P29, P30, P31, P32, P33, P34, P35, P36, P37, P38, P39, P40, P41, P42, P43, P44, P45, P46, P47, P48, P49, P50, P51, P52, P53, P54, P55, P56, P57, P58, P59, P60, P61, P62, P63, P64, P65, P66, P67, P68, P69, P70, P71, P72, P73, P74, P75, P76, P77, P78, P79, P80, P81, P82, P83, P84, P85, P86, P87, P88, P89, P90, P91, P92, P93, P94, P95, P96, P97, P98, P99, P100

Project No: DMG No. 11111 - T15  
Drawing No: 26768 - 001 - G - 10

DATE: 20/10/11  
DRAWN: J. JOHNSON  
CHECKED: J. JOHNSON  
APPROVED: J. JOHNSON



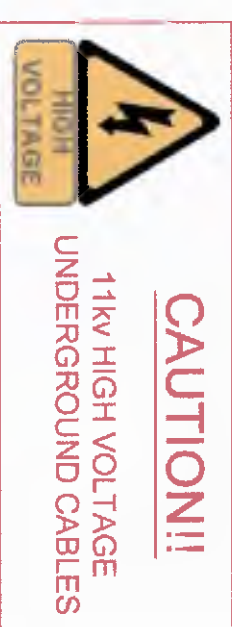
This is an AutoCAD drawing and is therefore NOT to be altered by hand. (A0)







REF NO.	ADOPT V/N	MARKER V/N	COMMENTS
TW 01			
TW 02			
WO 01			



Street Name	USRN	Road Type	Pipe Size	Pipe Material	SDR Rating	Length (m)	S/S	W/O	AV	UPT's	Tee's
HALLAM FIELDS ROAD DEVELOPMENT SITE	6504086	TYPE 4	63	PE	SDR 17	3	1	0	0	1	0
	N/A	N/A	63	PE	SDR 17	49	0	2	0	0	0
Total =						52	1	3	0	1	0

**CONSULT ALL UTILITY PLANS BEFORE ANY EXCAVATION**

**CUSTOMER CARE**

ANY EXCAVATION WORKS ARE HEAVILY IMPACTING ON THE LOCALITY AND ALL CALLOUTS FOR SENSITIVE CUSTOMERS MUST BE MADE TO THE CUSTOMER CARE DEPARTMENT BEFORE STARTING WORK. CONSULTATION WITH THE CUSTOMER CARE DEPARTMENT IS TO BE PROVIDED TO THE CUSTOMER CARE DEPARTMENT.

**HEALTH & SAFETY**

REVIEW THE DESIGN STAGE RISK ASSESSMENT FOR ALL WORKS.

CONSULT THE HEALTH AND SAFETY PLAN FOR ALL WORKS.

REPORT ALL CLOSE CALLS, INCIDENTS, INJURIES AND ACCIDENTS TO AMEY.

**CONSTRUCTION NOTES**

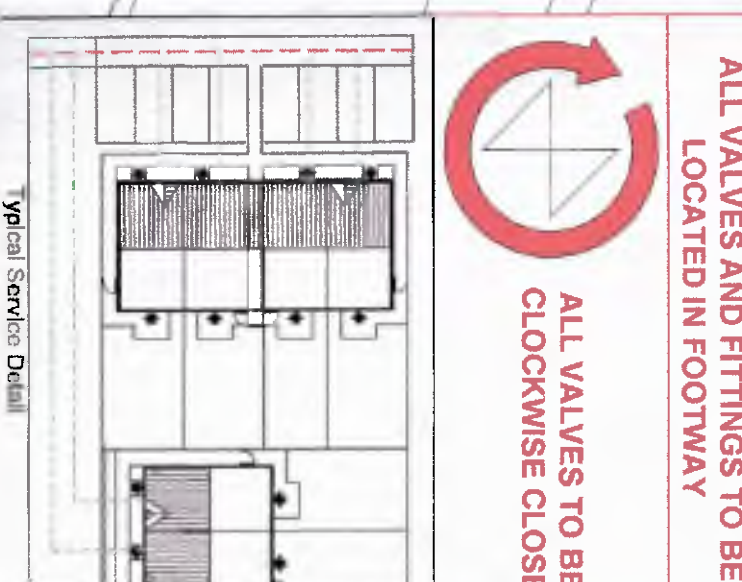
- ROUTE OF MAINS IS INDICATIVE. CONTRACTOR TO CHECK BEFORE YOU DIG A MINIMUM OF 7 DAYS PRIOR TO WORK COMMENCING.
- EMAIL: [CBVD@OPENREACH.CO.UK](mailto:CBVD@OPENREACH.CO.UK)
- EXCAVATIONS GREATER THAN 1.2M DEPTH REQUIRE SHORING SERVICES. CONNECTIONS AND WELDS ARE EXCLUDED UNLESS ALL BOXES TO BE CONSTRUCTED IN ACCORDANCE WITH THE APPROPRIATE SPECIFICATION.
- INSTALL BOUNDARY BOXES AT PROPERTY BOUNDARY ONLY.
- REFER TO RC DOCUMENT FOR SHU/OH DETAILS TO BE REMOVED.
- IDENTIFY TEMPORARY SUPPLIES PRIOR TO ANY EXCAVATION.
- APPROVED & CALIBRATED CABLE AVOIDANCE TOOLS TO BE USED AT PROPOSED EXCAVATIONS SAFE DIG METHODS TO BE ADAPTED TO BE INSTALLED DURING TRENCHLESS TECHNIQUES OTHERWISE STANDARD PE PIPE TO BE INSTALLED WHERE APPROPRIATE.
- THE LEG OFF-DISTANCE BETWEEN THE MAIN AND FH MUST BE NO MORE THAN 5M UNLESS THERE IS A SERVICE CONNECTION.
- ALL CHLORINATED WATER TO BE PASSED THROUGH SODIUM THIOSULPHATE CRYSTALS BEFORE BEING FUSHED INTO THE SURROUNDING AREA.
- SHORT STUES ONLY TO BE USED WITH WRITTEN PERMISSION.
- ENSURE EXCAVATED UNSTABILISED LAND IS DISPOSED OF AT A LICENSED TIP.
- RAE BARBETTER PIPE OR DUCTILE IRON.
- RAE PIPE MANAGEMENT REQUIREMENT TO BE DETERMINED BY USE PRE-CHLORINATED PIPEWORK.

**HYDRANTS TO BE THROUGH BORE WITH SANDWICH VALVE (HYDRO20) UNLESS OTHERWISE STATED**

**FIS REQUIREMENTS TO BE CONFORMANCE WITH**

**CONSTRUCTION METHOD TO BE CONFIRMED UPON RECEIPT OF SITE ACCEPTANCE**

<p><b>LEICESTERSHIRE</b></p> <p><b>FIRE AND RESCUE SERVICE</b></p> <p>12 Goddard Way Leicester LE4 3BU</p>	<p><b>amey</b></p> <p>International Design Hub 4th &amp; 5th Colindale Plaza, Barnet, London, N4 4RT www.amey.co.uk</p> <p>Severn Trent Water Ltd One Supply Chain East Spartan Charnock Road DE11 7ES</p>
--	--



Project Title	HALLAM FIELDS ROAD BIRSTALL
Rev A	21/11/2024
Scale	A1