

ARPA372 - Merseyside Maritime Museum Sea Galleries

10 No. Custom steel showcase Ref. SG01

SPECIFICATION TABLE	
SUBJECT	DETAILS
CASE TYPE	Custom steel hinged showcase
ACCESS	1No Hinged door to front of showcase.
DRESS PANELS	Base dress panels to be Forex, 30% holes. Baumanns fabric wrapped: colour ref. TBA
LIGHTING	Dimmable LED lighting system comprises of 12No adjustable heads. Colour temperature Neutral White / Warm White (3000k Warm White to light sheet + 4000k Neutral White to spots controlled via 2 of seperate dimmers).
COLOUR	Case metalwork to be powder coated 30% gloss. RAL colour ref. RAL 9002 (Light Grey).
GLASS SPEC	11.5mm Pilkington Optiview laminated glass. All glazing supplied in accordance with BSEN356:2000
CONDITIONING	1 No. silica gel housing to base. Suitable for 5 No. full size cassettes.
SECURITY	2 No Abloy Sentry Master Key system CL104EX . Locks to be suited A&B to own unique key No.
CONSTRUCTION	Custom steel case, glazed all round. See drawing for details. Case to be non-demountable.
SHELVING	Fixing points for shelving system to be included.
PLINTH	Plinth to be box section steel frame, clad in powder coated mild steel panels. Front panel removable for access to silica gel housing.
POWER	Final electrical connection by others. Power to top of case required for LED lighting.
NOTES	

DRAWING APPROVAL STAMP

A	Approved for manufacture.	<input type="checkbox"/>
B	Approved for manufacture with comments.	<input type="checkbox"/>
C	Not approved for manufacture.	<input type="checkbox"/>

Approved by:

Signed:

Date:

NML Comments:

Please see notes

STATUS 'B'

John Fielding

19.12.17

Can you supply weight of case plus maximum load capacity
Fabric: Baumann Unisono III Col: 94

NML suite Contact John Fitton

Drivers and dimmers at front door edge.

Locks: Facilities suite

Why is this different from Half case detail which has an air gap all round?

2 Hinged secure top panel to allow access to drivers and dimmers with out lifting whole panel.

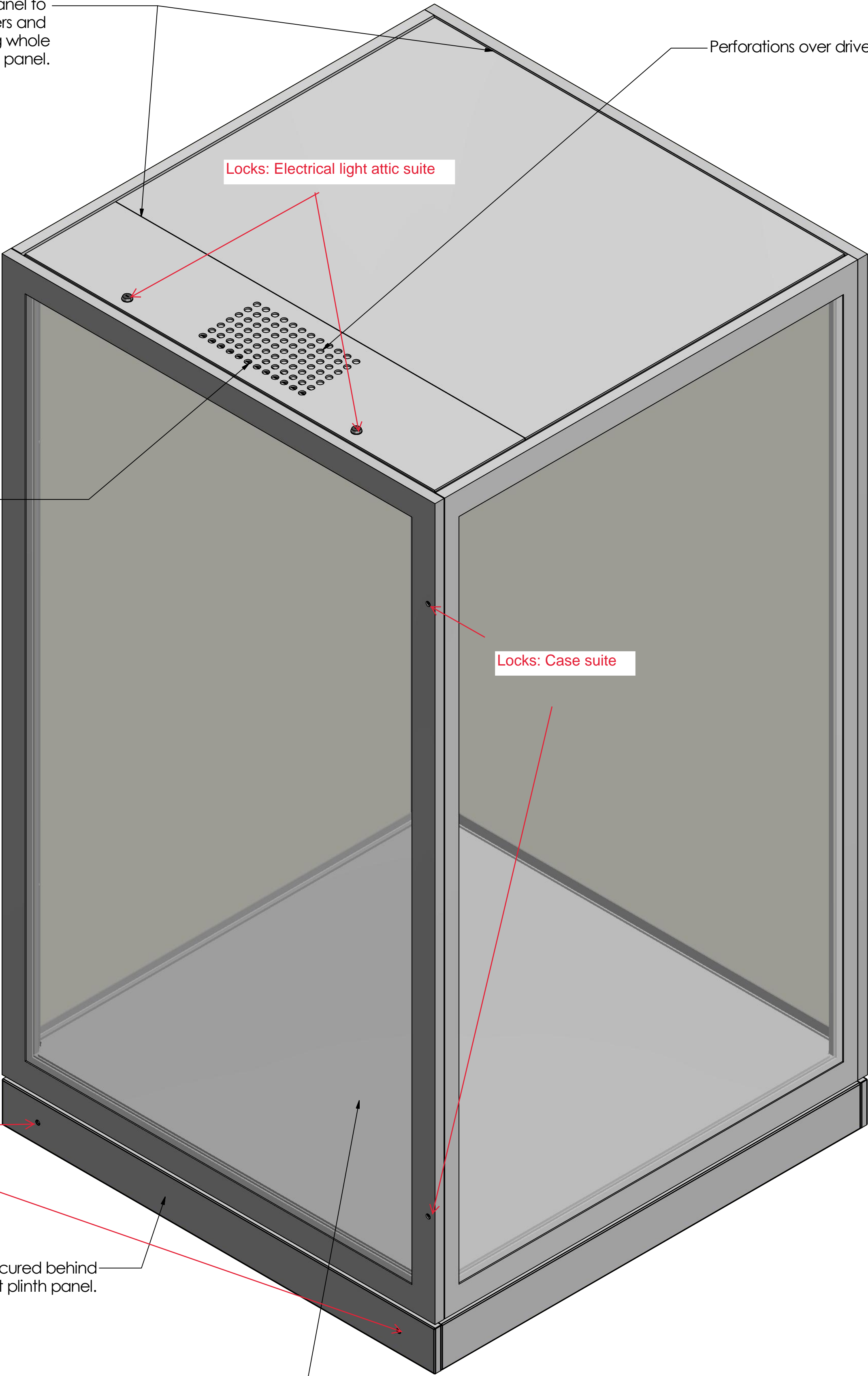
Perforations over driver panels.

Locks: Electrical light attic suite

Locks: Case suite

Facilities drawer secured behind lockable front plinth panel.

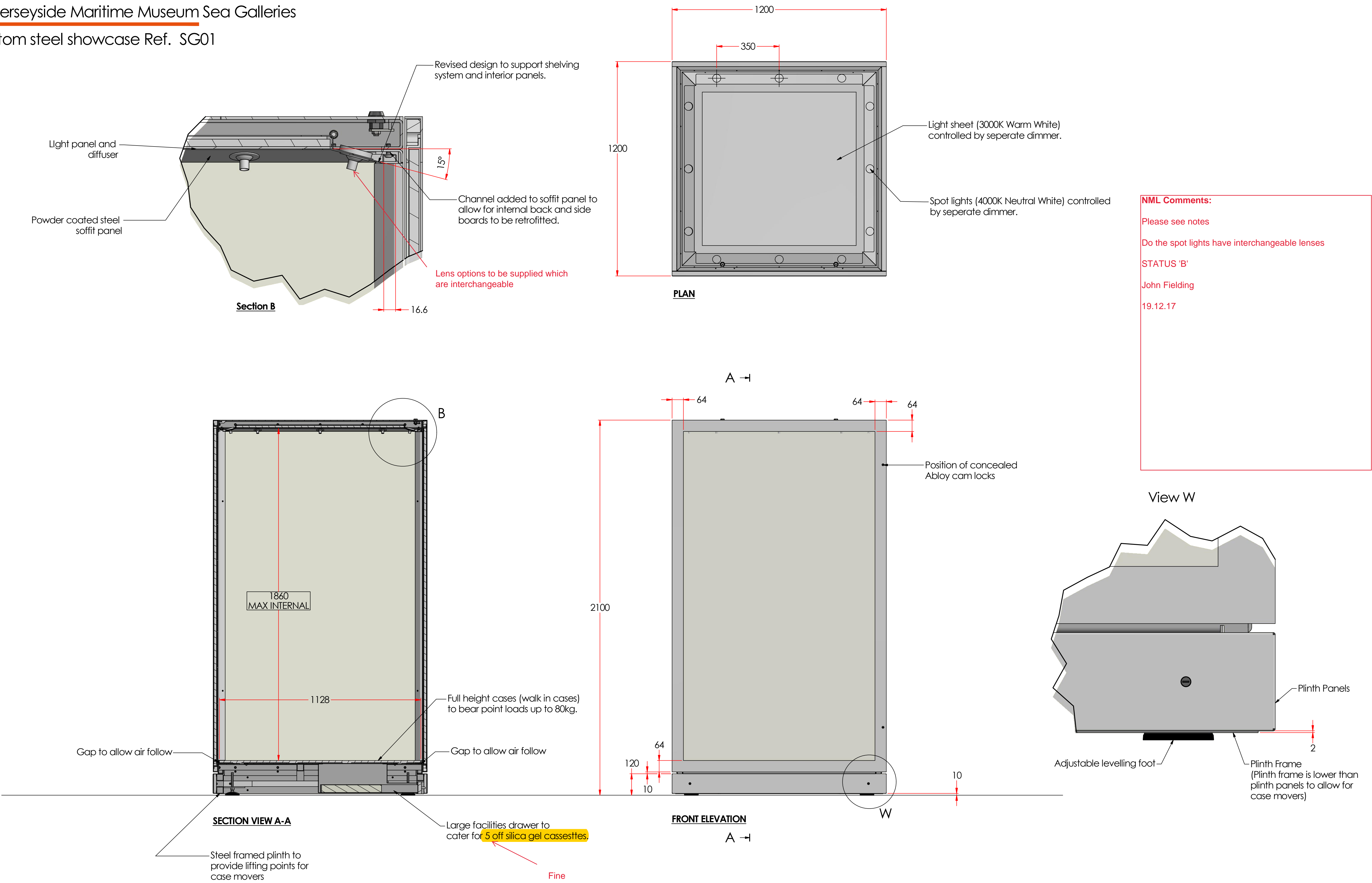
Perforations in base dress panel above the facilities drawer for silica gel air flow.



REVISION HISTORY			
REV	DESCRIPTION	DATE	APPROVED
C	Specifications table updated. Lid altered to incorporate 2 hinges.	30/11/2017	
C	Soffit panel altered to allow for back and side panels to be retrofitted.	08/12/2017	

ARPA372 - Merseyside Maritime Museum Sea Galleries

10 No. Custom steel showcase Ref. SG01



ARPA372 - Merseyside Maritime Museum Sea Galleries

2 No. Custom steel showcase Ref. SG02

SPECIFICATION TABLE	
SUBJECT	DETAILS
CASE TYPE	Custom steel hinged showcase
ACCESS	1No Hinged door to front of showcase.
DRESS PANELS	Base dress panels to be Forex, 30% holes. Baumanns fabric wrapped: colour ref. TBA
LIGHTING	Dimmable LED lighting system comprises of 12No adjustable heads. Colour temperature Warm White / Neutral White (3000k Warm White to light sheet + 4000K Neutral White white light to spots controlled via 2 of seperate dimmers).
COLOUR	Case metalwork to be powder coated 30% gloss. RAL colour ref. RAL 9002 (Light Grey).
GLASS SPEC	11.5mm Pilkington Optiview laminated glass. All glazing supplied in accordance with BSEN356:2000
CONDITIONING	1 No. silica gel housing to base. Suitable for 5 No. full size cassettes.
SECURITY	2 No Abloy Sentry Master Key system CL104EX . Locks to be suited A&B to own unique key No.
CONSTRUCTION	Custom steel case, glazed all round. See drawing for details. Case to be non-demountable.
SHELVING	Fixing points for shelving system to be included.
PLINTH	Plinth to be box section steel frame, clad in powder coated mild steel panels. Front panel removable for access to silica gel housing.
POWER	Final electrical connection by others. Power to top of case required for LED lighting.
NOTES	

DRAWING APPROVAL STAMP

A	Approved for manufacture.	<input type="checkbox"/>
B	Approved for manufacture with comments.	<input type="checkbox"/>
C	Not approved for manufacture.	<input type="checkbox"/>

Approved by:

Signed:

Date:

NML Comments:

Please see notes

STATUS 'B'

John Fielding

19.12.17

Can you supply weight of case plus maximum load capacity
Fabric: Baumann Unisono III Col: 94

NML suite Contact John Fitton

Can front plinth panel locate into bottom frame and only have locks at the top

Air gap size

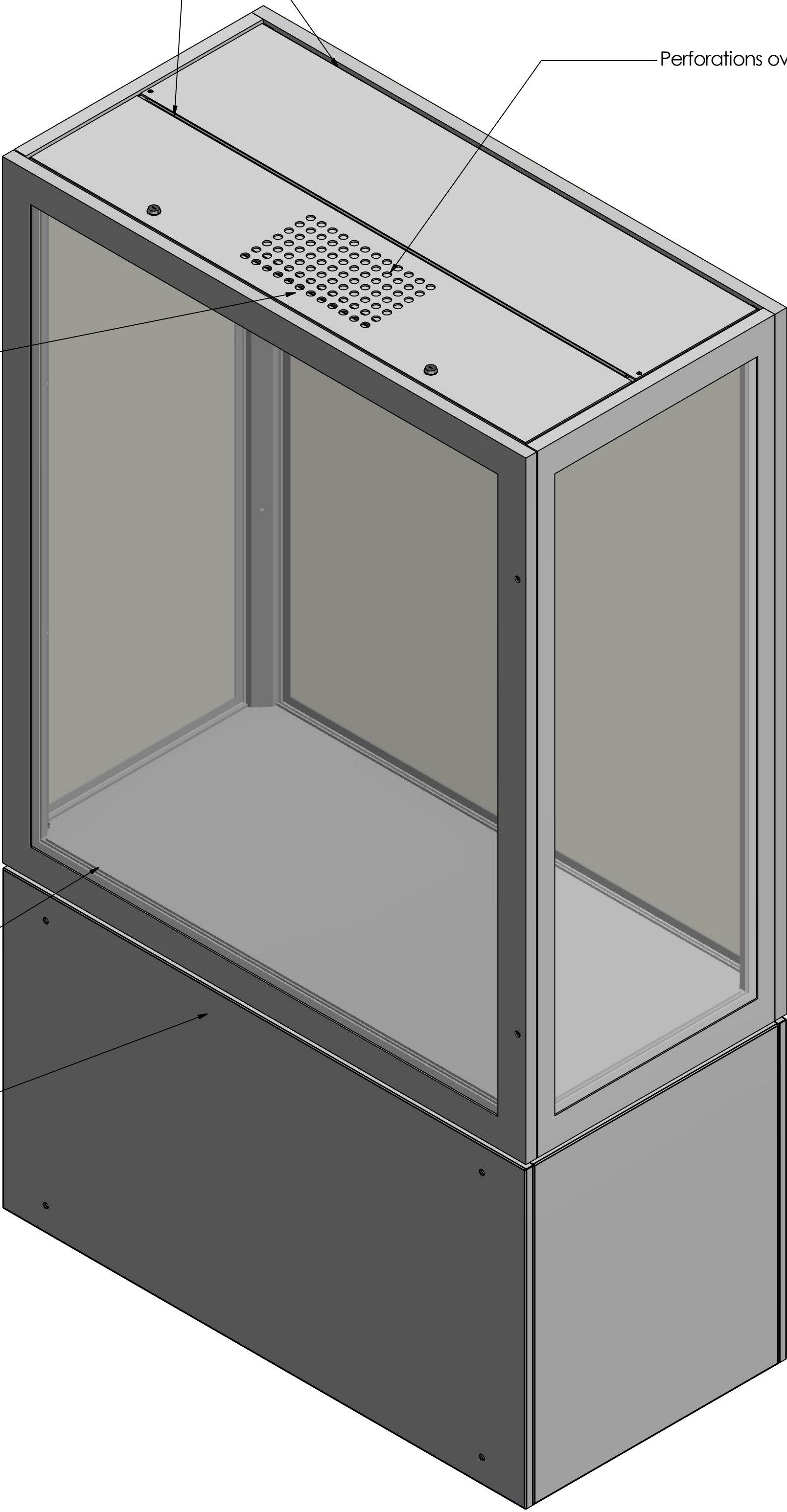
Air gap around base dress panel allows for silica gel air flow.

Facilities drawer secured behind lockable front plinth panel.

2 Hinged secure top panel to allow access to drivers and dimmers with out lifting whole panel.

Perforations over driver panels.

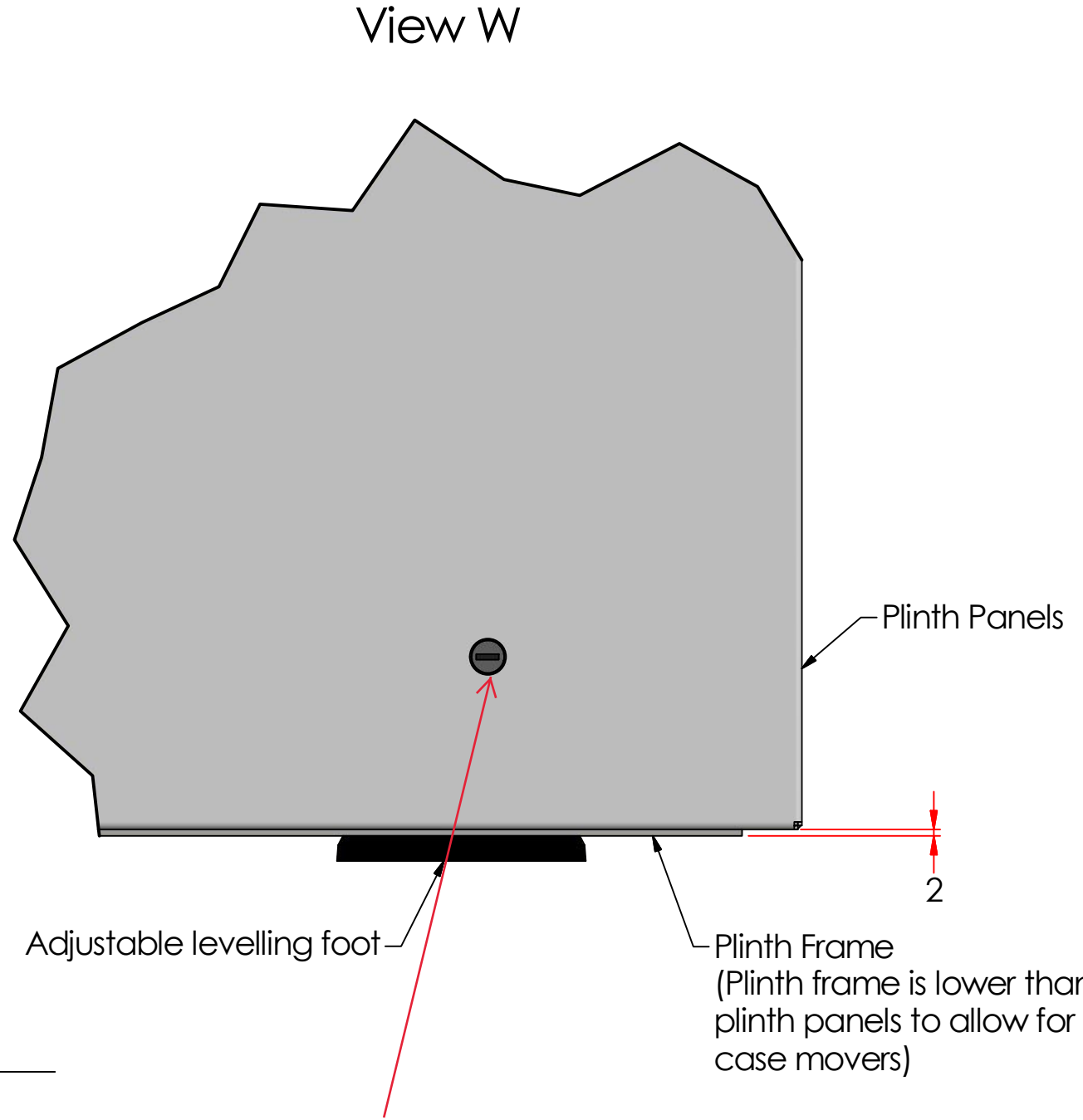
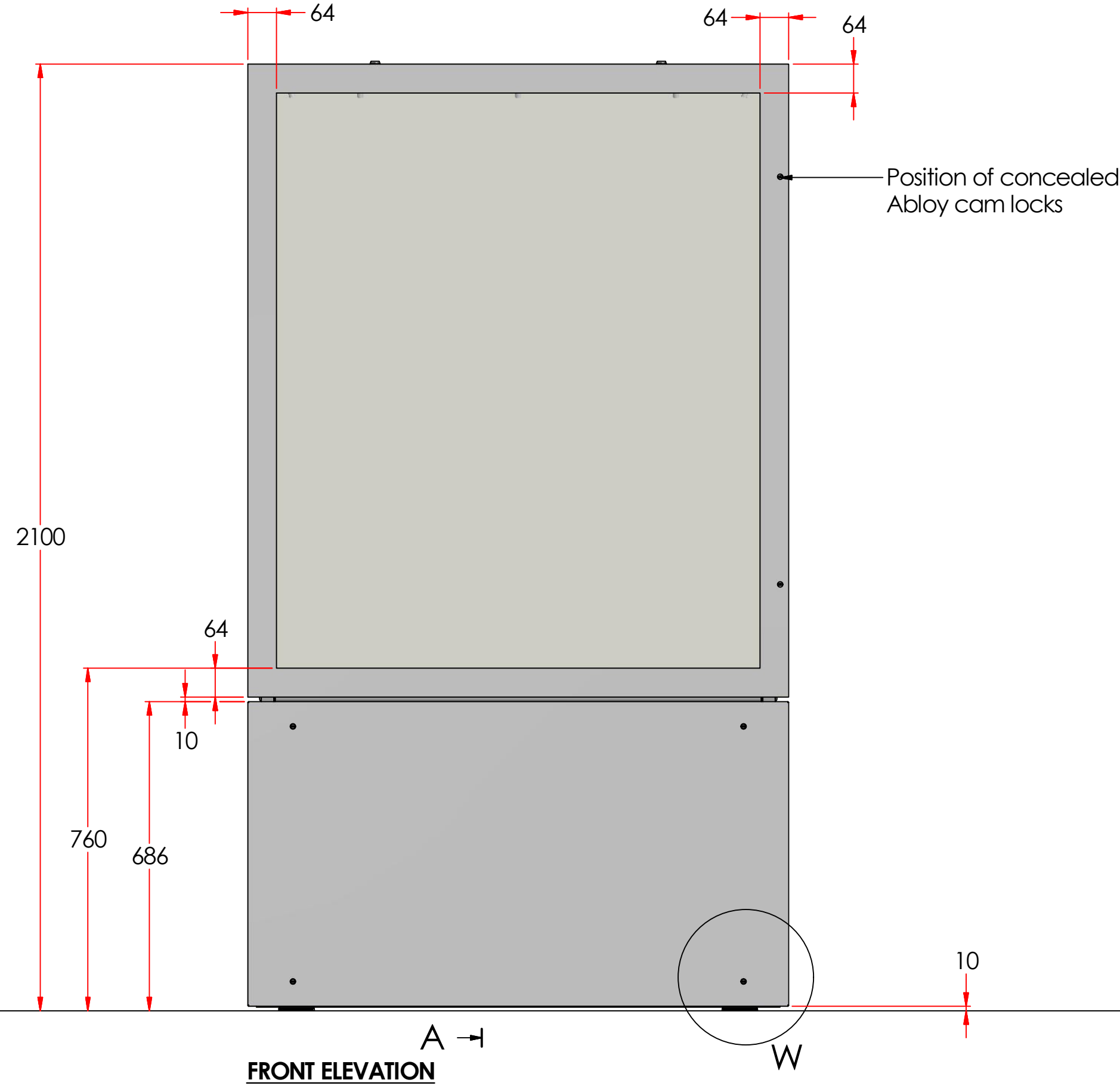
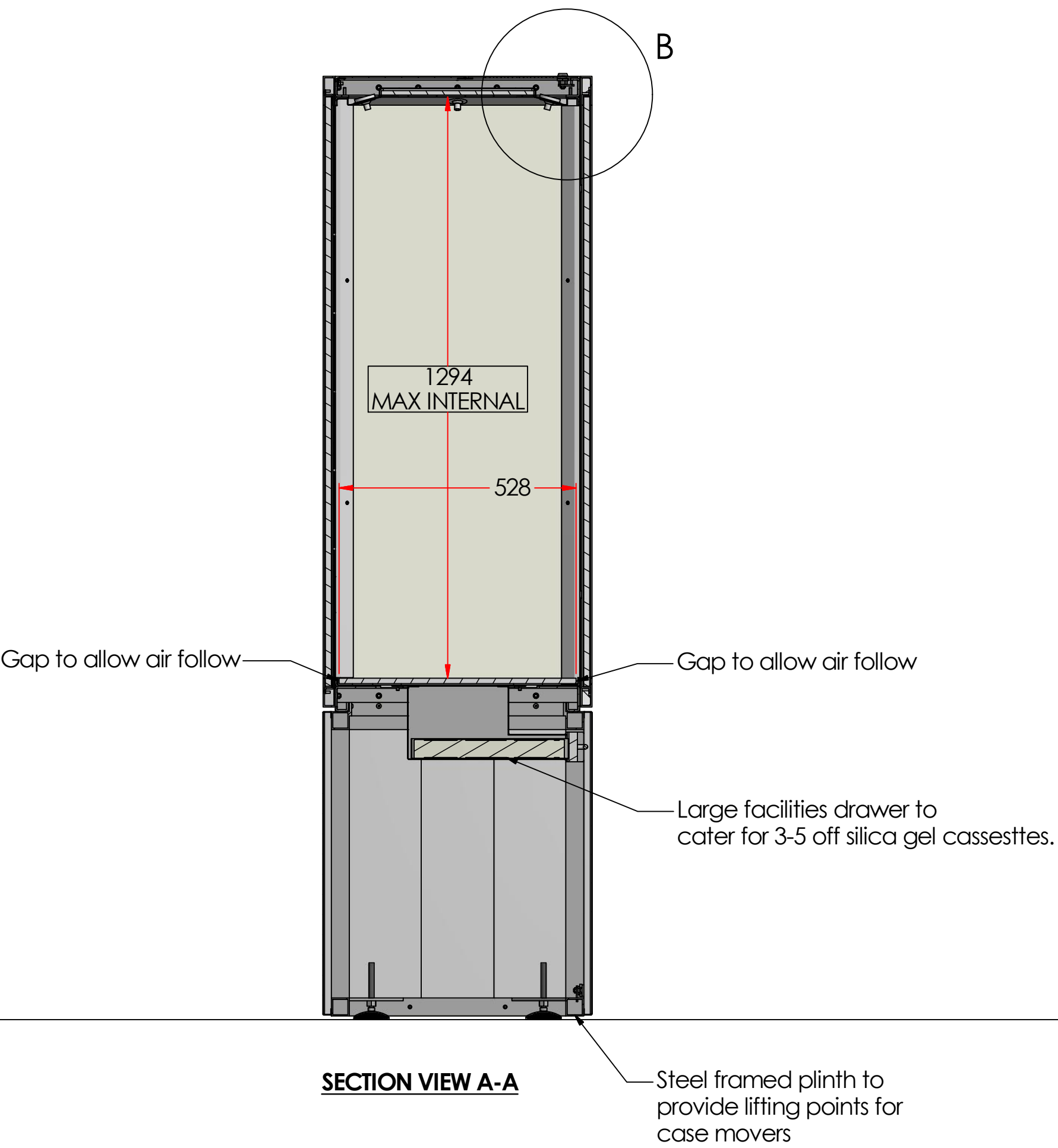
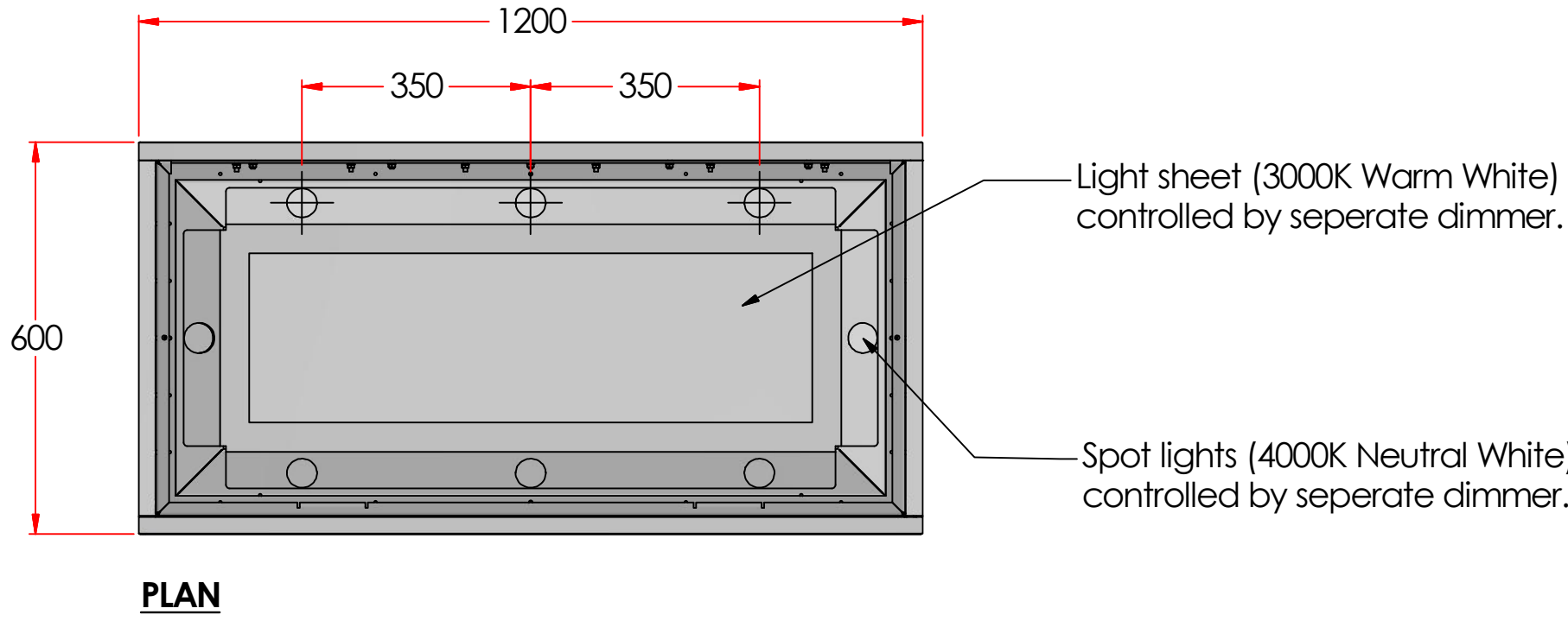
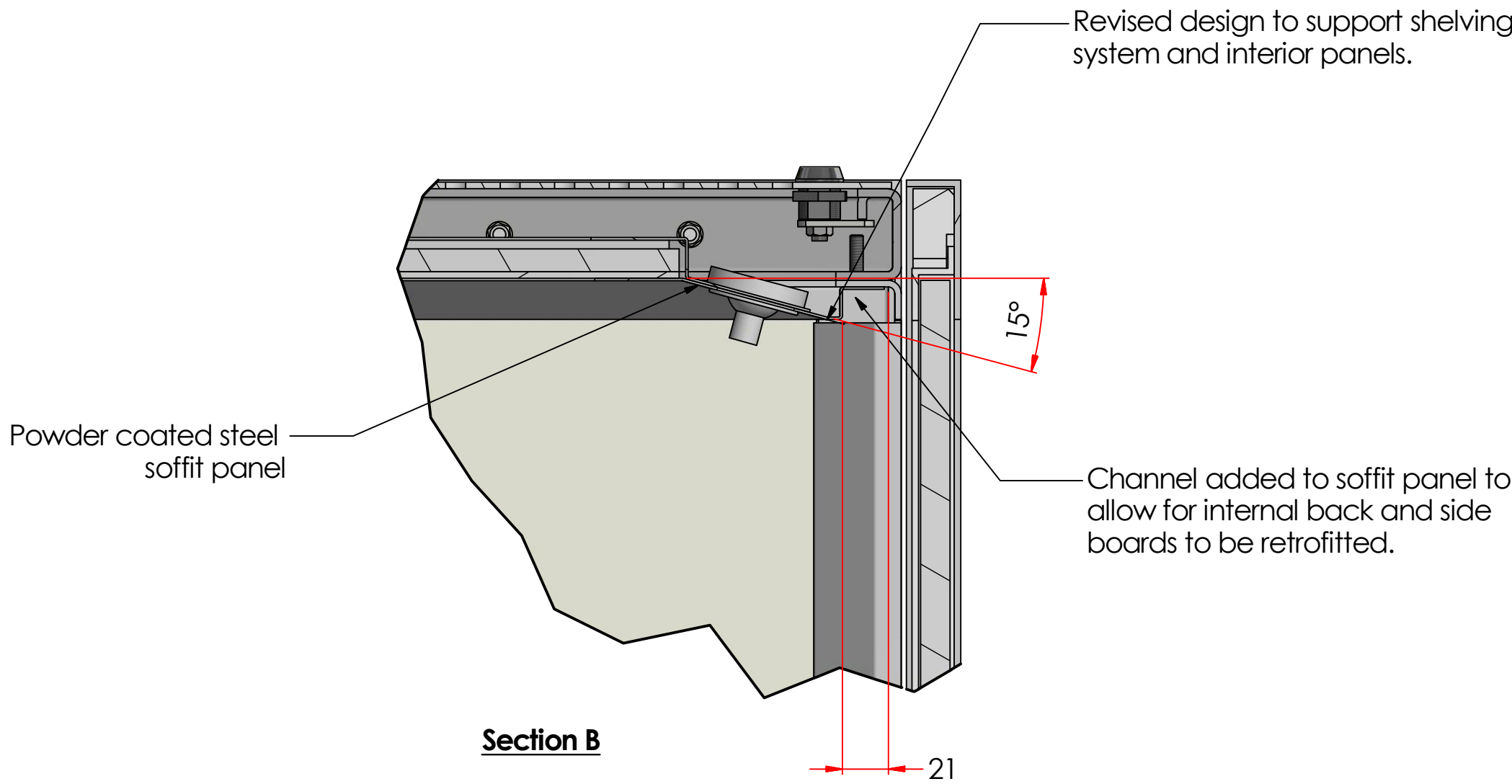
Drivers and dimmers at front door edge.



REVISION HISTORY			
REV	DESCRIPTION	DATE	APPROVED
B	PLINTH HEIGHT INCREASED	18/12/2017	

ARPA372 - Merseyside Maritime Museum Sea Galleries

2 No. Custom steel showcase Ref. SG02

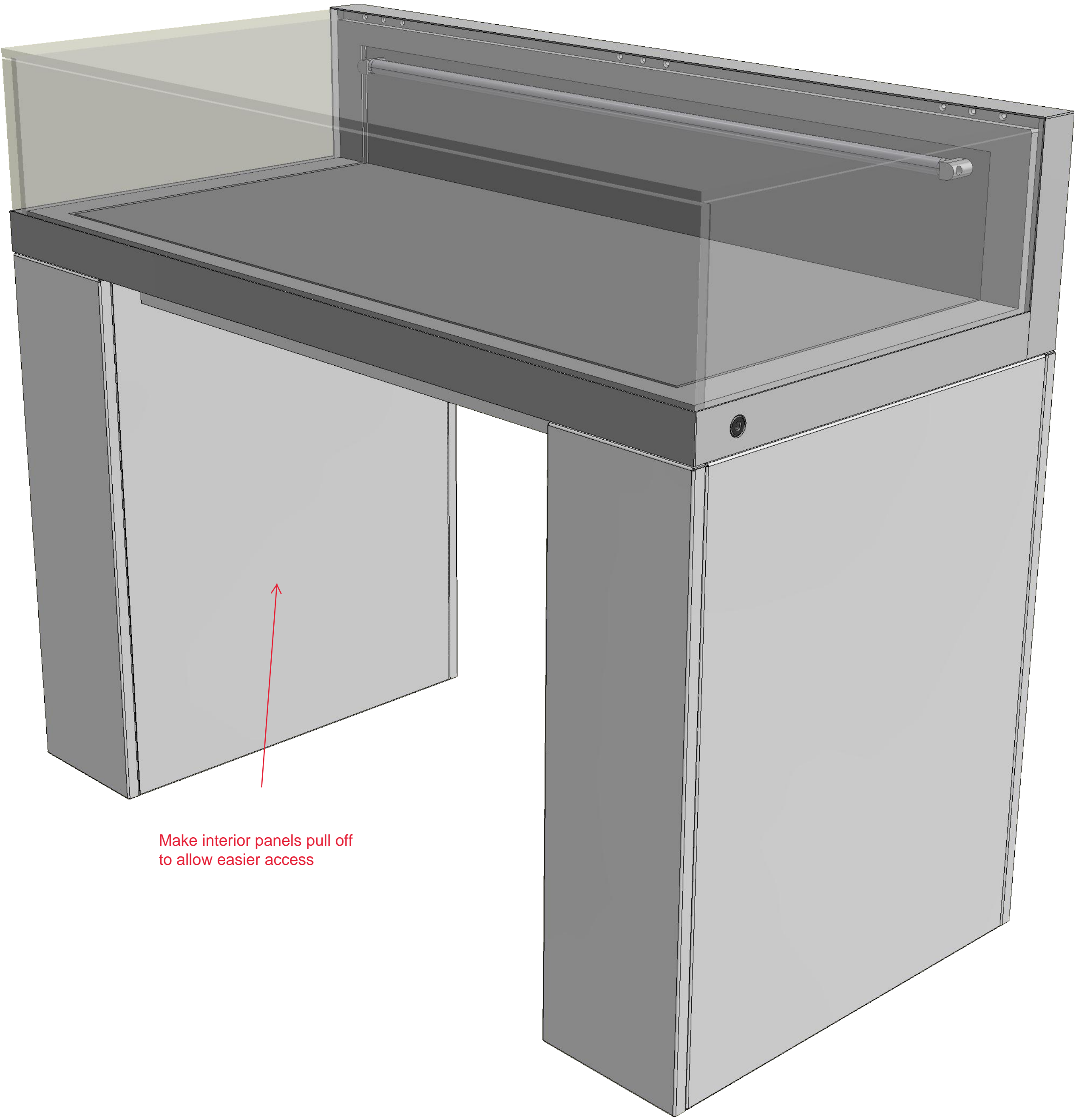


Can front plinth panel locate into bottom frame and only have locks at the top

ARPA372 Merseyside Maritime Museum Sea Galleries

12 No. Hinged case Ref. SG03

SPECIFICATION TABLE	
SUBJECT	DETAILS
CASE TYPE	Hinged desktop case
ACCESS	1 No gas strut assisted hinged glass top.
DRESS PANELS	Forex Base dress panel Baumanns fabric wrapped, air-flow gap around panel. Colour REF: Naumann Unisonno III col. 94. Approx. weight of case: 90kg, weight of plinth: 60kg. Maximum load capacity: 40kg
LIGHTING	Dimmable LED gantry style lighting system to back of the case. Light bar can be adjusted to help achieve a desired angle.
COLOUR	Case metalwork to be powder coated. Colour RAL 9002
GLASS SPEC	11.5mm Pilkington Optiview, Low iron low reflective laminated glass. All glazing specified in accordance with BS EN 356:2000
CONDITIONING	Hinged lockable door to underside of case suitable for 2No half size silica gel cassettes to base.
SECURITY	2No Abloy locks to sides OF430EX (Case suite) A&B. 1No Abloy cam lock CL104 for access to silica gel cassettes (Facilities suite) and 1No Abloy cam lock CL104 behind removable side panel for the cabinet with dimmers and drivers (Electrical lights attic suite)
CONSTRUCTION	4 sided glass case hinged from upper back edge. Bolted to plinth.
PLINTH	ZFMDF Plinth Cad with steel panels. Panels to be powder coated matching the case colour. Side panels to be removable
POWER	To the bottom of case. Final connection by others.
NOTES	Gas spring to be lockable for safety stay when case is open.



DRAWING APPROVAL STAMP		
A	Approval for manufacture.	<input type="checkbox"/>
B	Approval for manufacture with comments.	<input type="checkbox"/>
C	Not approved for manufacture.	<input type="checkbox"/>
Approved by:		
Signed:		
Date:		

NML Comments:

Please see notes

STATUS 'B'

John Fielding

19.12.17

REVISION HISTORY			
REV	DESCRIPTION	DATE	APPROVED
C	First Issue	31/10/2017	ML
B	Case type revised, specification notes updated, safety stay system added	30/11/2017	ML
C	Notes updated, gel housings modified	13/12/2017	ML

ARPA372 Merseyside Maritime Museum Sea Galleries
12 No. Hinged case Ref. SG03

Lockable gel springs

1No gas spring to be lockable with realase knob for direct hydraulic release.
Gas spring is locked by blocking gas flow across the piston.
As long as the release knob is depressed the gas spring is unlocked and operates as a normal gas spring.
Once the release knob is released the gas spring locks again
There is no need to lean into the case.
Access to release knob : Under the case

NML Comments:

Please see notes

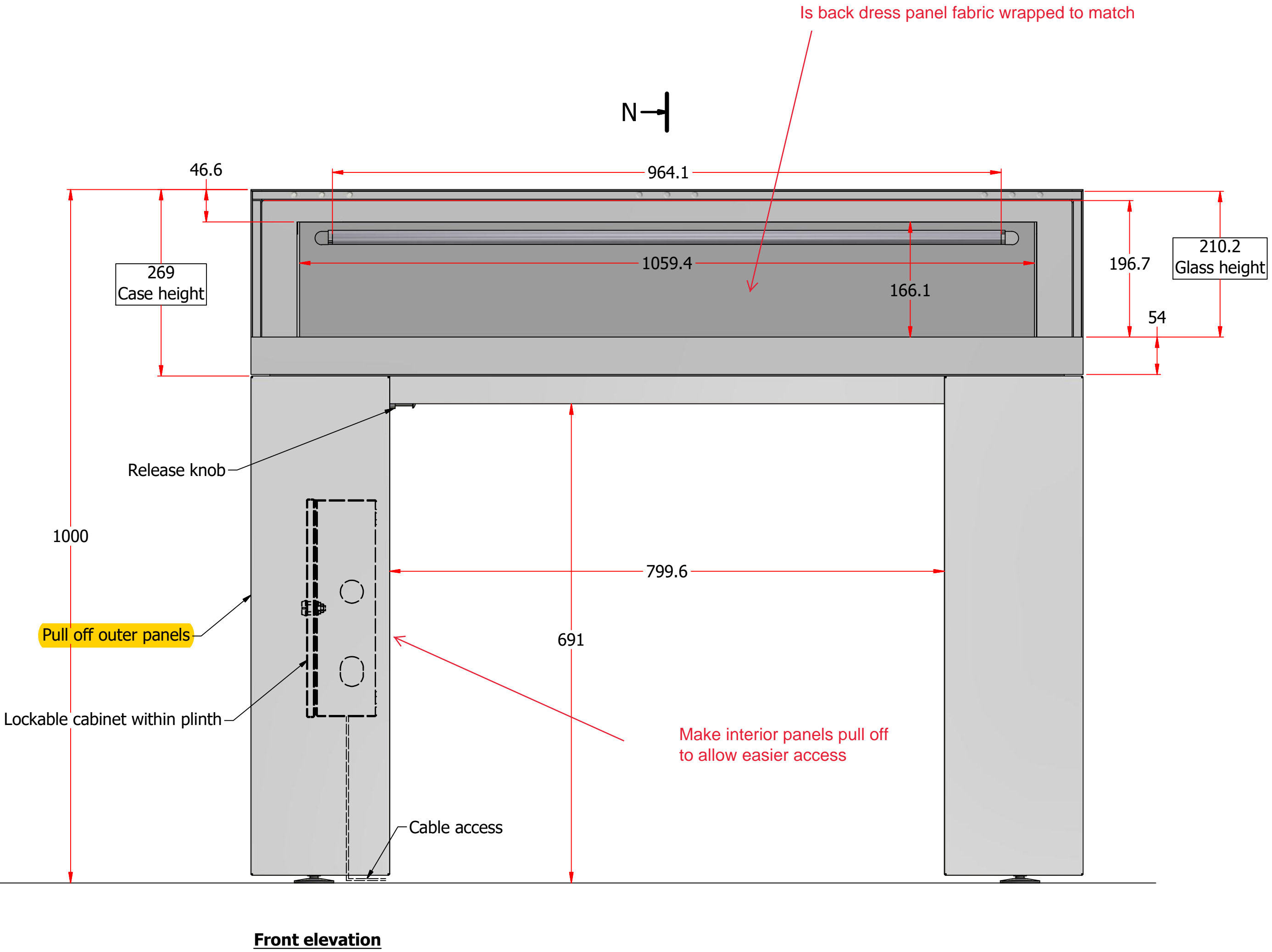
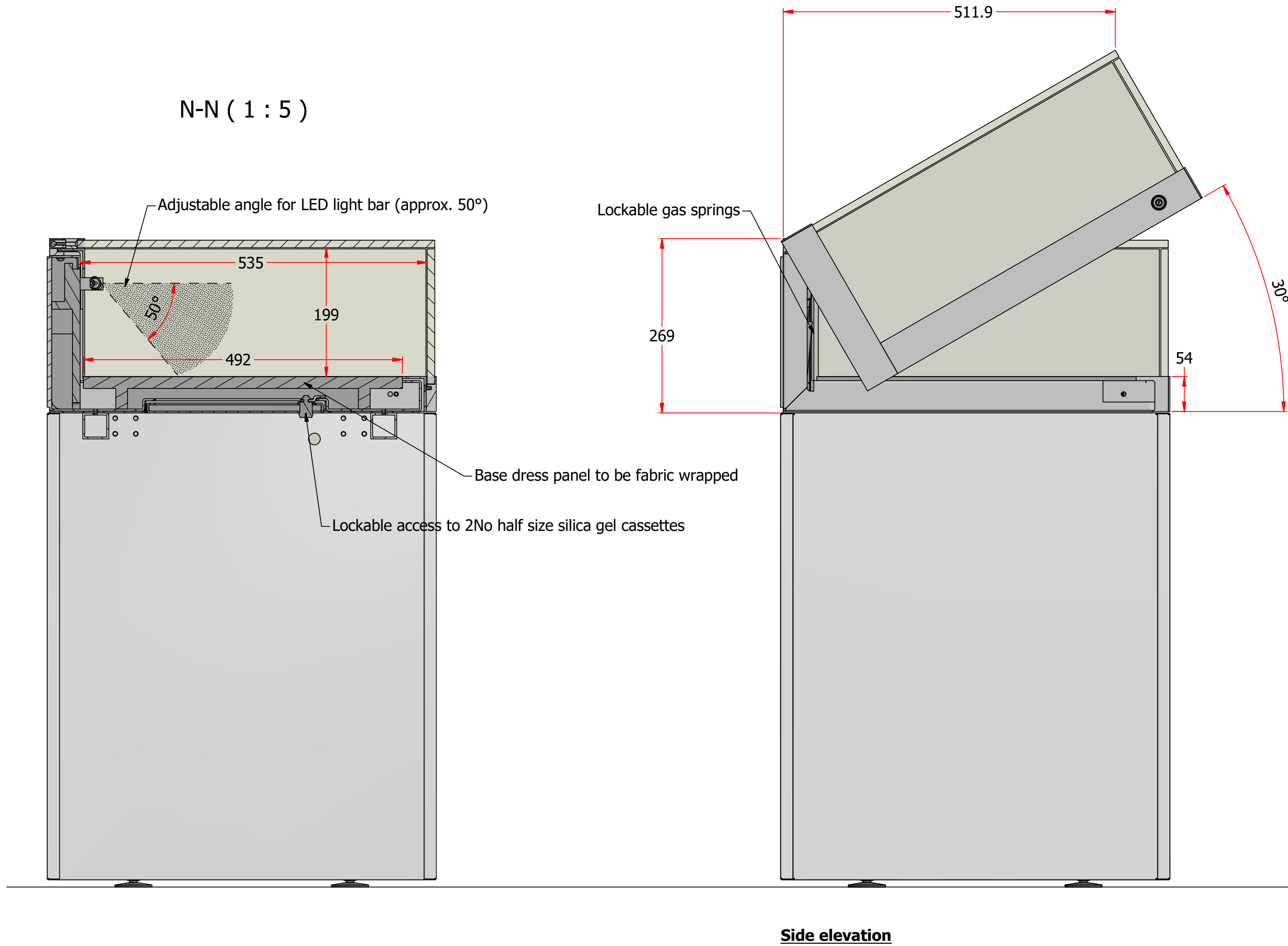
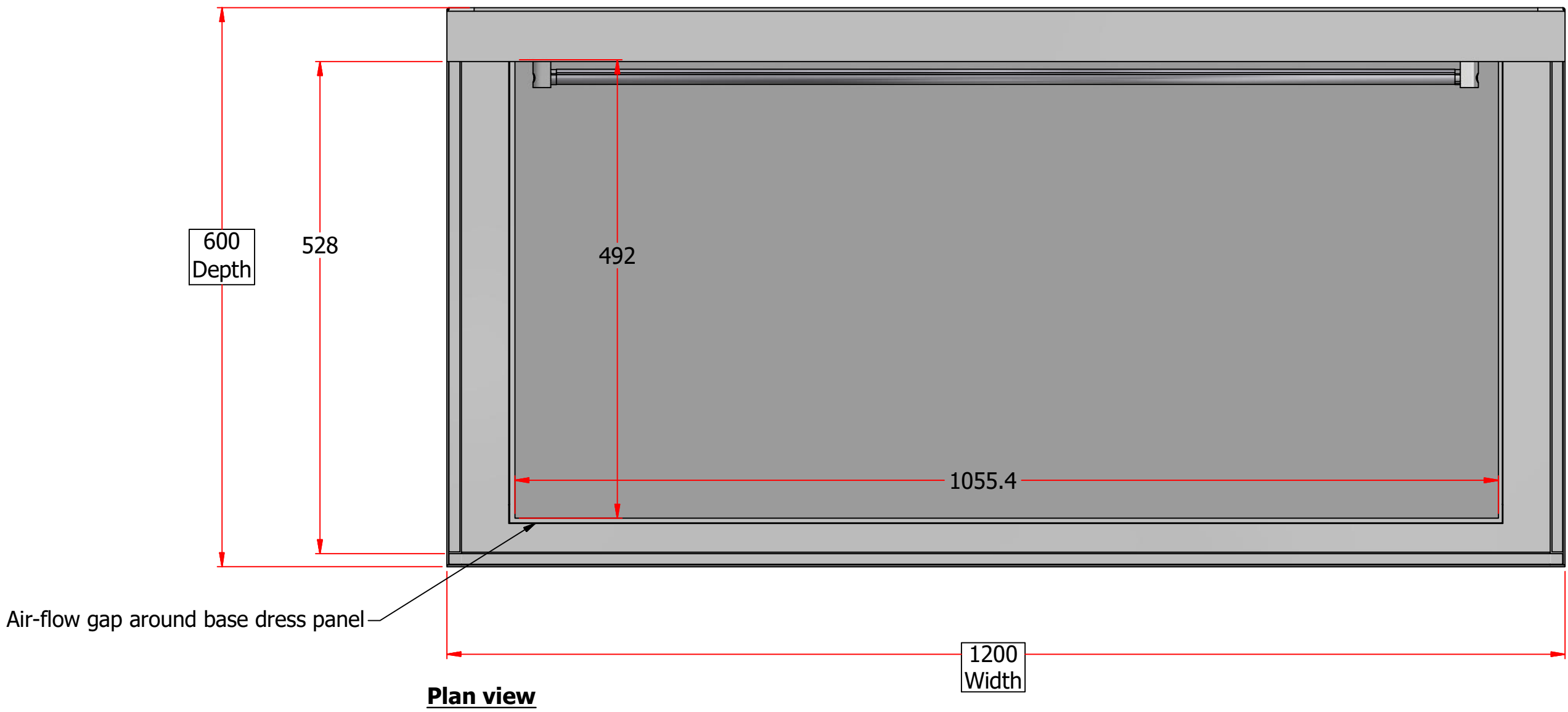
* Back dress panel finish (fabric)

* access into legs from under case

STATUS 'B'

John Fielding

14.12.17



ARPA372 Merseyside Maritime Museum Sea Galleries

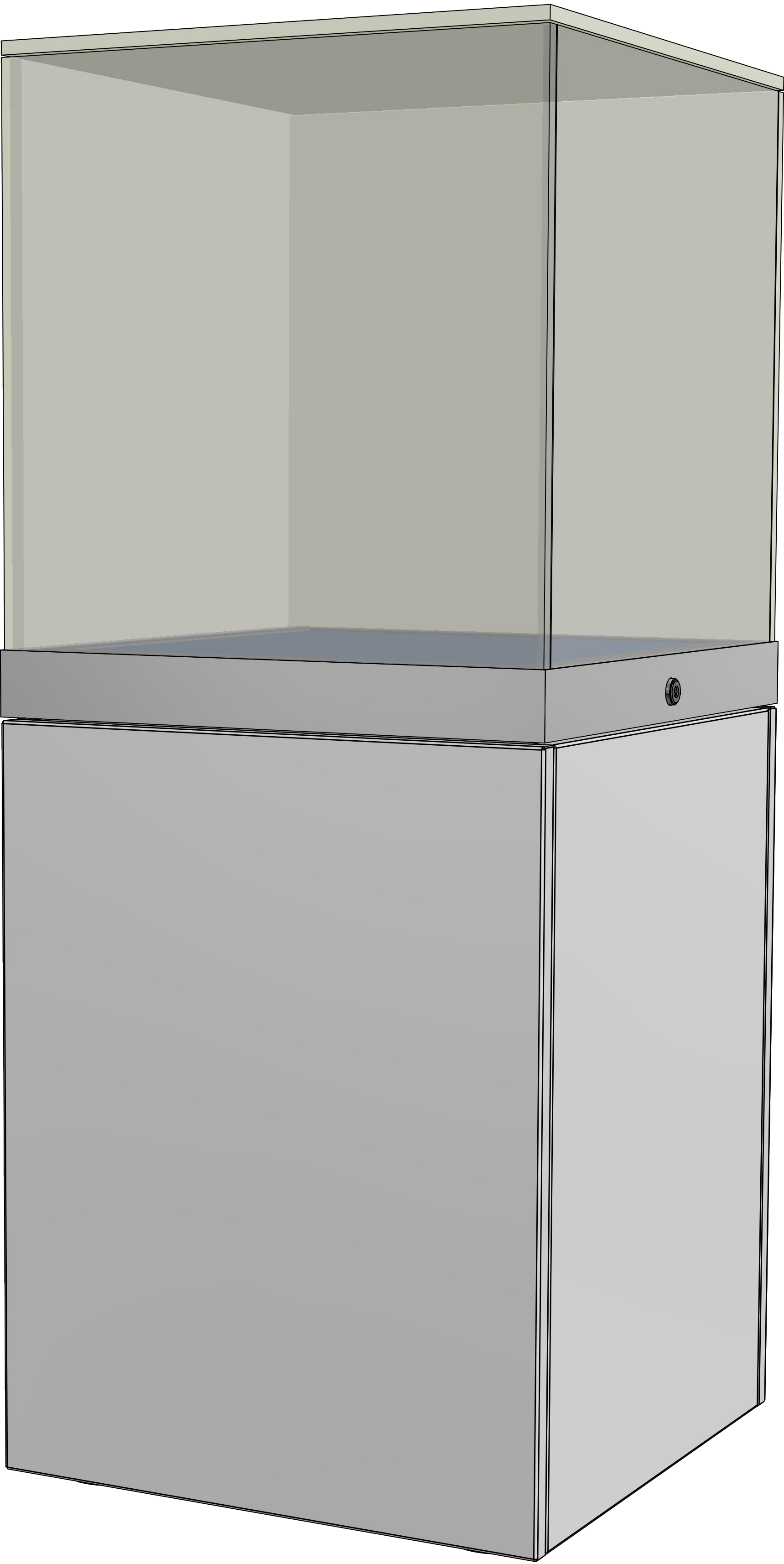
5 No. LIFT OFF VISION Ref. SG04

SPECIFICATION TABLE	
SUBJECT	DETAILS
CASE TYPE	Lift off Vision
ACCESS	Lift off glass top
DRESS PANELS	Forex base dress panel Baumanns fabric wrapped. Colour REF: TBA
LIGHTING	N/A
COLOUR	Case metalwork to be powder coated. Colour RAL 9002
GLASS SPEC	11.5mm Pilkington Optiview, Low iron low reflective laminated glass. All glazing specified in accordance with BS EN 356:2000
CONDITIONING	1No lockable mini silica gel carrier to base suitable for 1No silica gel bag.
SECURITY	2No Abloy locks to sides of case OF430EX. Locks to be suited A&B to own unique key No. 1 No Abloy lock for silica gel carrier CL104
CONSTRUCTION	5 sided glass case. Bolted to plinth.
PLINTH	ZFMDF Plinth Cad with steel panels. Panels to be powder coated matching the case colour. Front panel to be removable
POWER	N/A
NOTES	

Baumann Unisono III Col.94

Can it be made to accommodate
Prosorb cartridge

NML key suite for locks
through John Fitton



DRAWING APPROVAL STAMP		
A	Approval for manufacture.	<input type="checkbox"/>
B	Approval for manufacture with comments.	<input type="checkbox"/>
C	Not approved for manufacture.	<input type="checkbox"/>
<div>Approved by:</div>		
<div>Signed:</div>		
<div>Date:</div>		

NML Comments:

Please see notes

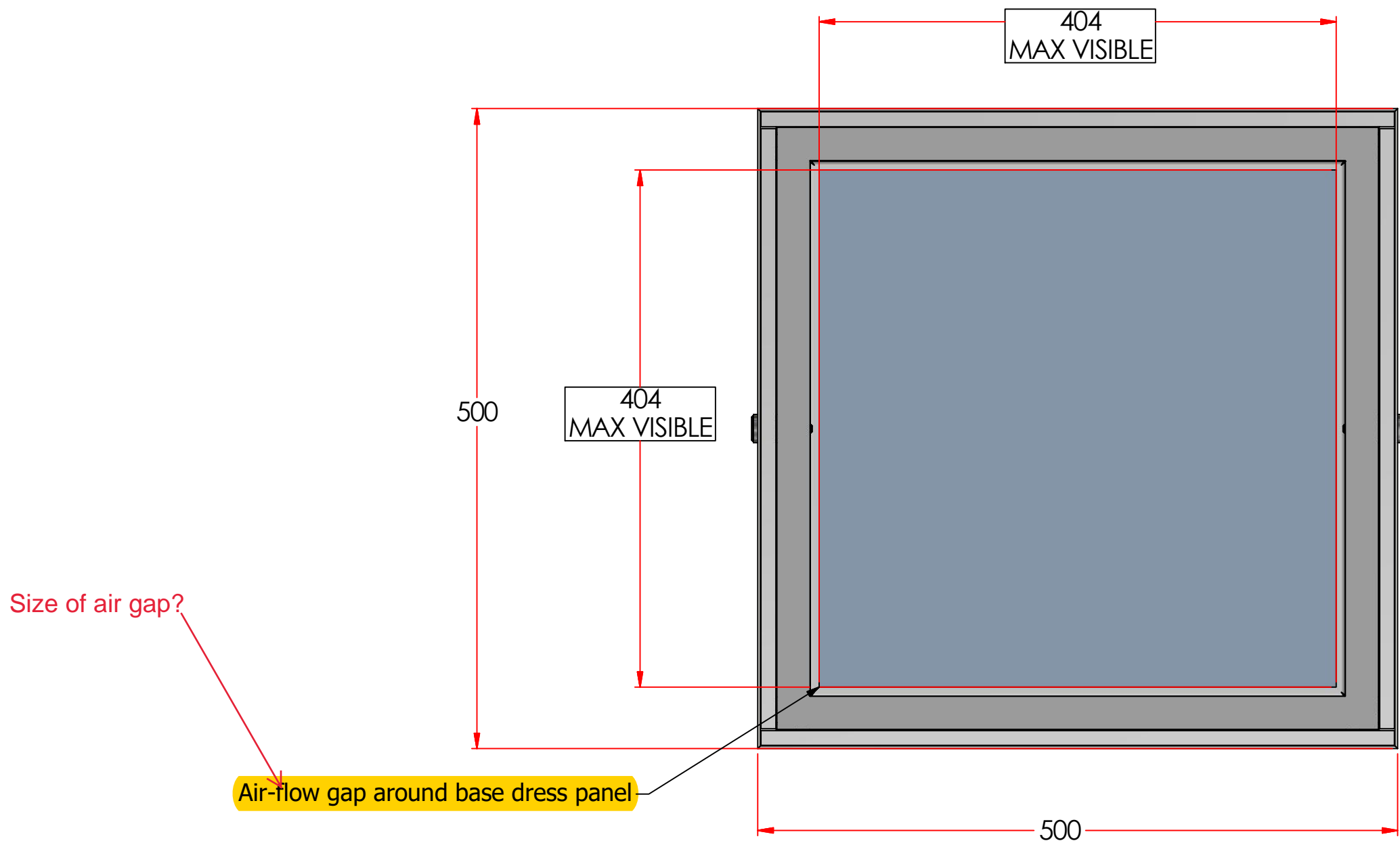
STATUS 'B'

John Fielding

19.12.17

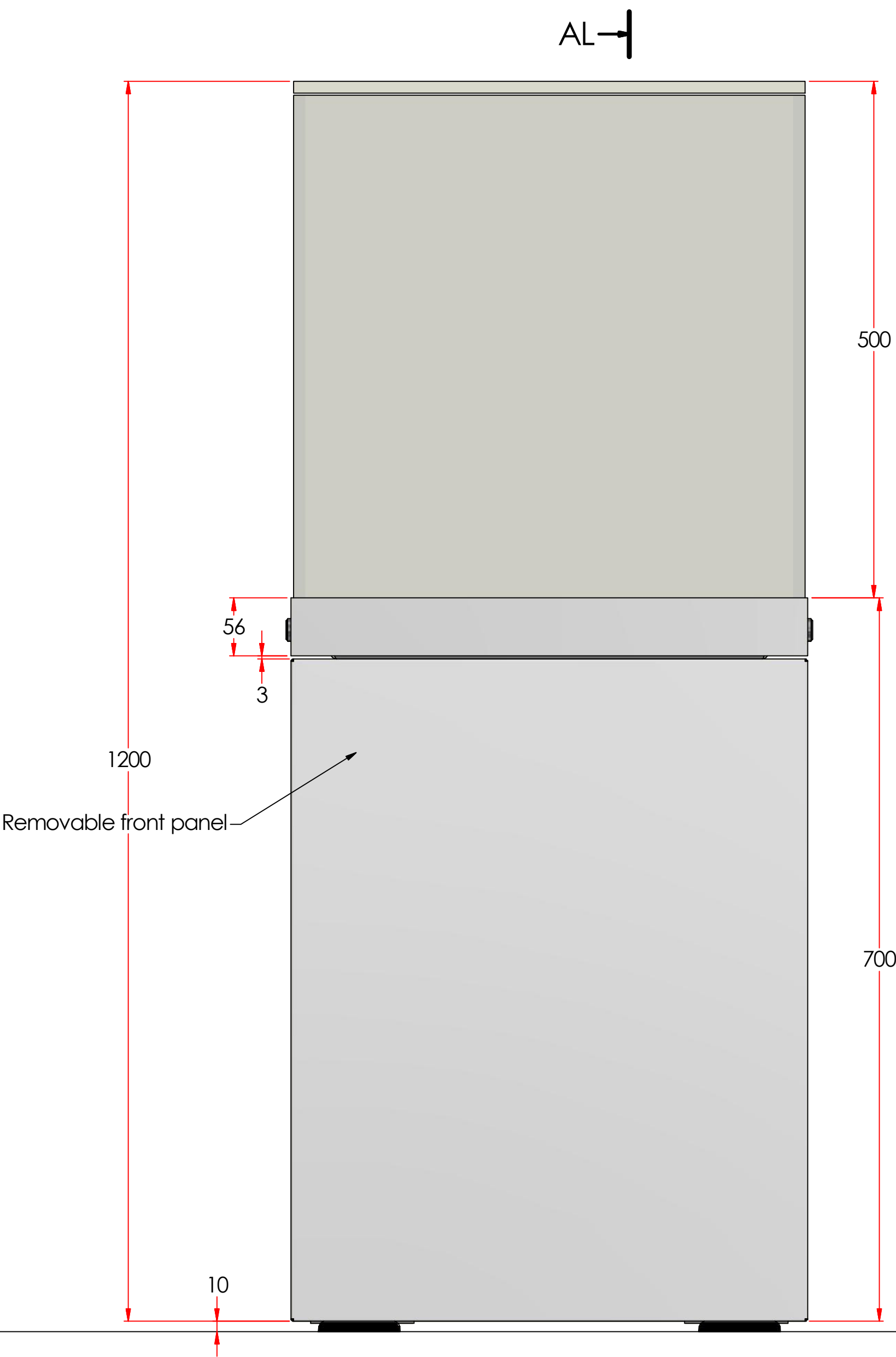
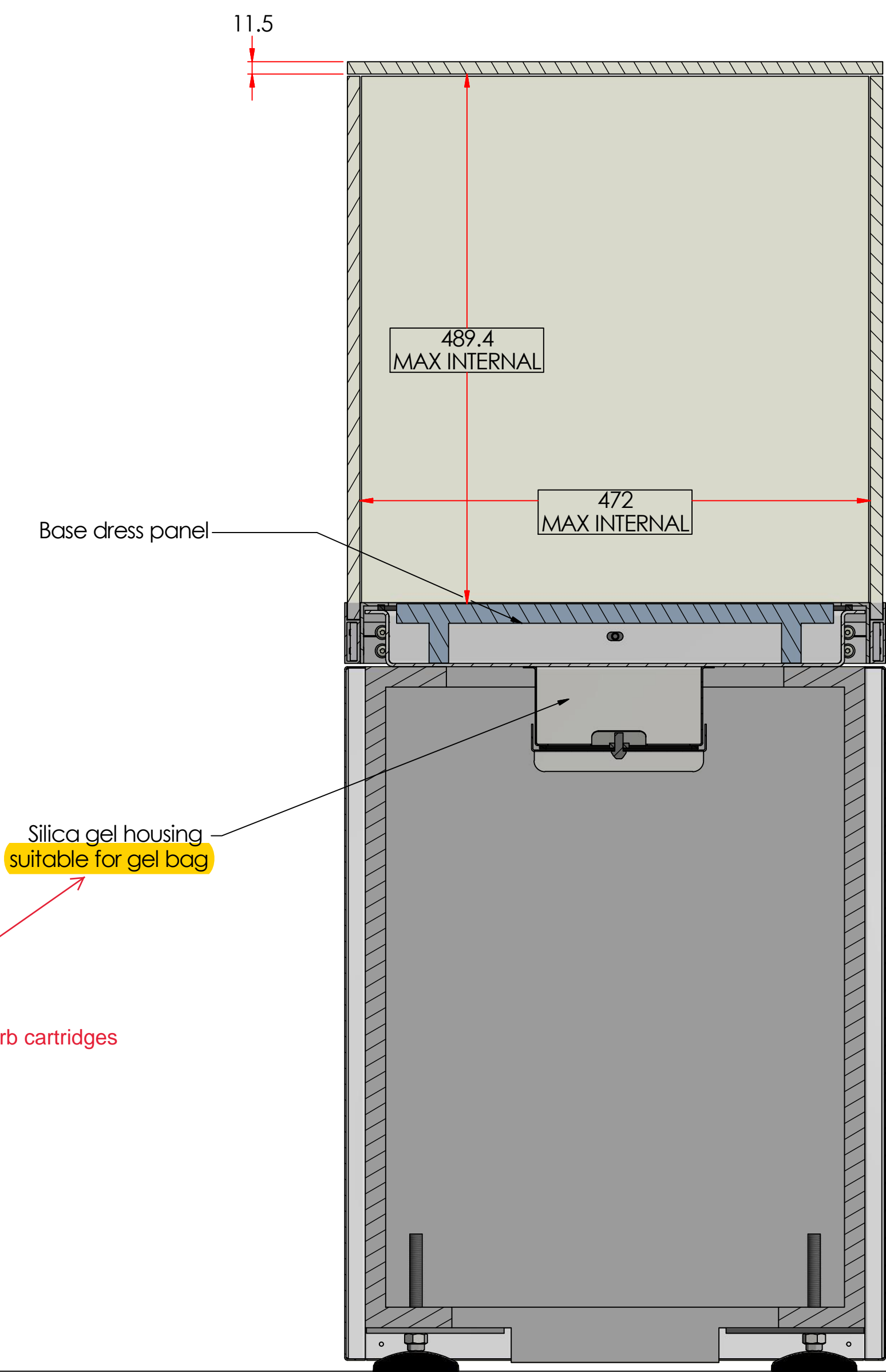
ARPA372 Merseyside Maritime Museum Sea Galleries

5 No. LIFT OFF VISION Ref. SG04



PLAN

AL-AL (1 : 4)



FRONT ELEVATION

AL-AL

NML Comments:
Please see notes
STATUS 'B'
John Fielding
14.12.17