

Install a new 150mm fresh air duct and white grill within the ceiling void to outside .Outside termination to finish 1m off the finish floor with dome cap end. ducting needs to water tight. Install PIR absents detection to turn lights off if left on. Replace the existing corridor lights with LED batten surface mounted units.

ELECTRICAL CONTRACTOR TO ENSURE ALL SERVICE RUNS REDDORDED ARE ON DRAWINGS AND RELAYED TO ARCHITECT/DESIGNER FOR ADDITION TO AS BUILT DRAWINGS

UPH ELECTRICAL AND PLUMBING SCHEMATIC FOR MANIFOLD AND BUFFER VESSEL BY SPECIALIST MANUFACTURER'S

ALLOW FOR BRUSHED STAINLESS STEEL SOCKETS & SWITCHES THROUGHOUT

MVHR TO SPECIALISTS DESIGN

Key to Lighting Symbols

- Light switch
- 2 Way light switch
- Door activated light switch
- Weatherproof light switch
- Pull cord switch
- Dimmable light switch
- On/Off/Auto Switch (for external lighting)
- Specialist lighting controls
- PIR
- 2A Socket
- Recessed downlight
- IP44 Recessed downlight
- Recessed downlight (H)
- Beam mounted spot light
- Beam mounted spot light (IP rated)
- Pendant
- Special lighting point
- bulkhead light
- Mirror light (1)
- Mirror light (2)
- Low level LED light (aisle)
- Low level LED light (halfway)
- Plinth light
- Cupboard Lighting
- External wall light
- Internal wall light
- Decking / Low level light
- Fluorescent light
- Mounted in a floor box
- LED strip lighting

Key to Ventilation Symbols

- Fan
- Fan Isolator
- MVHR Unit
- MVHR supply air (incoming)
- MVHR extract (outgoing)

Key to Notation

- Mounted at high level
- Mounted at low level
- Mounted in a floor box
- Weatherproof accessory
- Mounted above worktop
- Towel Rail
- Washing Machine
- Tumble Dryer
- Dishwasher
- Freezer
- Holddryer
- Underfloor heating manifold

Key to Power Symbols

- Single socket outlet
- Twin socket outlet
- Telephone outlet (M denotes Master)
- DATA outlet (i.e. CAT5e/CAT6)
- Television outlet
- Satellite TV outlet
- HDMI Connection
- Spur
- Spur feeding low level outlet
- 32A Supply for kitchen appliance
- Electrical supply (as noted)
- Shower point
- Supply for heated mirror
- Towel rail
- Distribution board
- Bell push
- Bell sounder

Key to Heating

- Radiant Heater
- URH Manifold
- Radiator
- Adjustable URH thermostat

Key to Fire Alarm Symbols

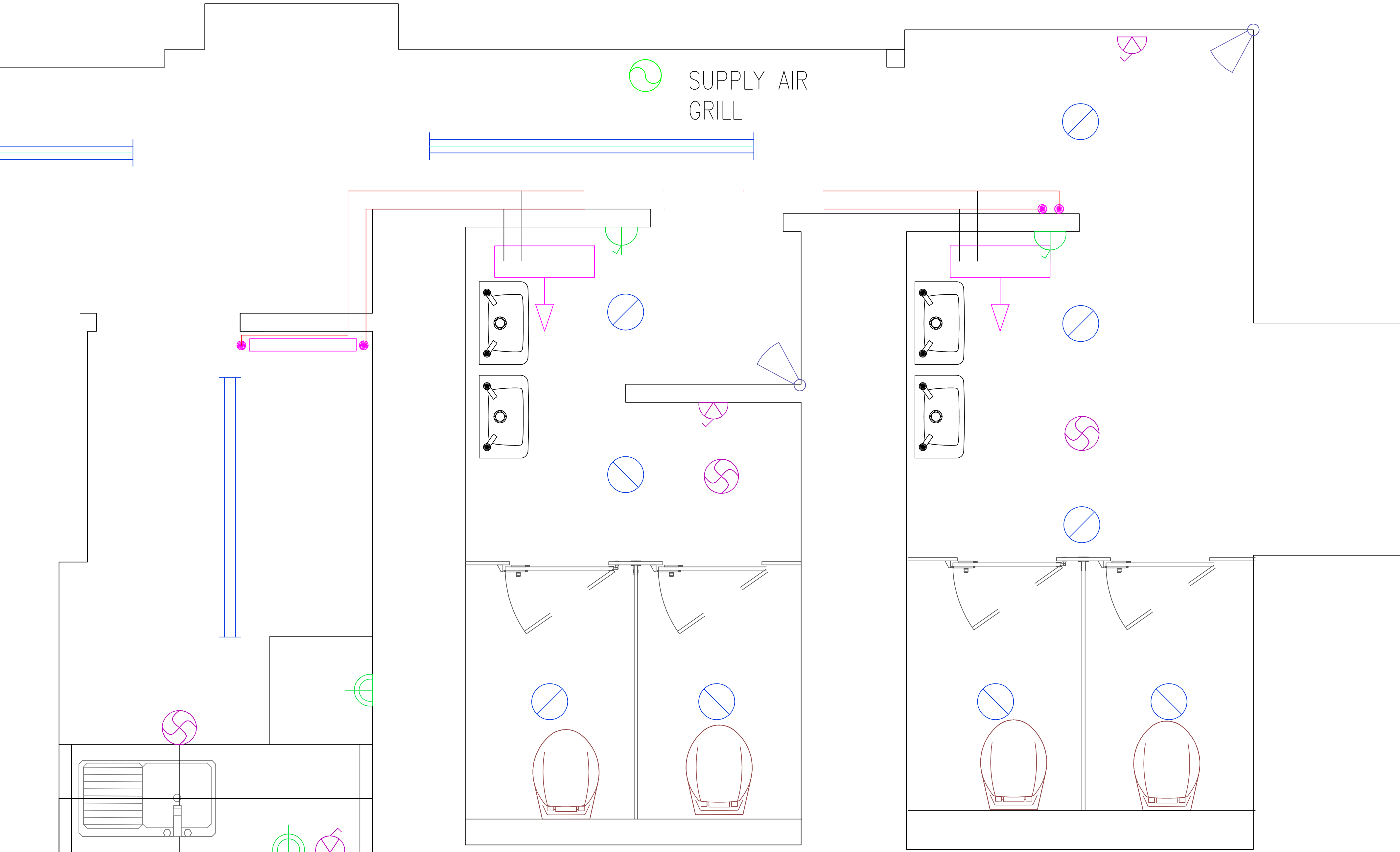
- Smoke detector c/w sounder
- Heat detector c/w sounder
- CO2 detector c/w sounder
- Sounder
- Manual Call Point
- Fire Alarm Strobe Light

Key to Intruder Alarm Symbols

- Door contact
- PIR
- Keypad
- Sounder

Key to Meters

- Gas (g) electric (e) water (w) meter location



Install new base units and stainless steel sink and drainer, franke Chrome mono block mixer tap. Extend hot and cold services from adjoining toilet, exposed pipe work to be boxed in. install new extract fan to be interlinked with light. Extend the existing final ring circuit to new double socket outlets. Replace the existing light fit with a 1533mm led batten.

Remove the existing toilets and cubicles, replace with new. Cisterns to be installed behind new stub partition with remote dual flush button. Toilet pan to be wall mounted. remove the existing tile grouted and reply new. remove the existing light fittings and replace with Aurora Enlite fixed LED down lights and emergency power packs. Replace the existing extract fans with Vent Axia lo carbon silhouette axial fan with humidistat. extend the final ring circuit to pick up the new Myson high-line fan heater with return air stat.

Rev.	Revision Notes	Date
A	- DRAFT ISSUE	_ 11-02-17
B	—	—
C	—	—
Rev.	—	—
Rev.	—	—

Rev.	Revision Notes	Date
A	—	—
Rev.	—	—
Rev.	—	—
Rev.	—	—
Rev.	—	—

TENDER ISSUE



Job Description REPLACEMENT HEATING SYSTEM	Date 05.02.2017	Scale 1:100	Drawn AA/AA	Checked AA/AA
Location BODMIN TOWN COUNCIL OFFICE	Drawing Title PROPOSED BASEMENT ALTERATIONS			
Client BODMIN TOWN COUNCIL	Dwg. No. M707	Rev. A		

Aston Reef Consultant Engineers - www.astonreef.com Tel:01208 811153