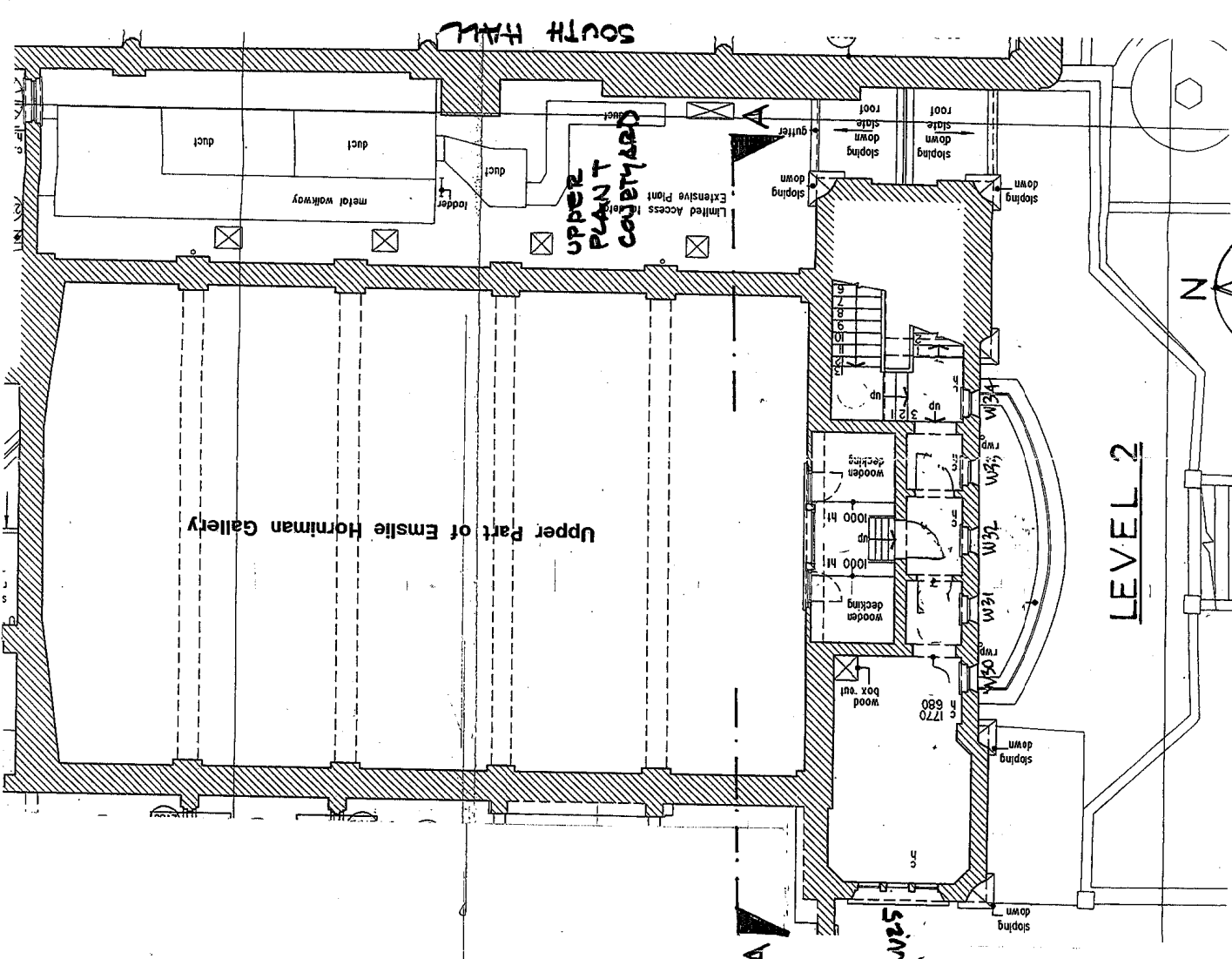
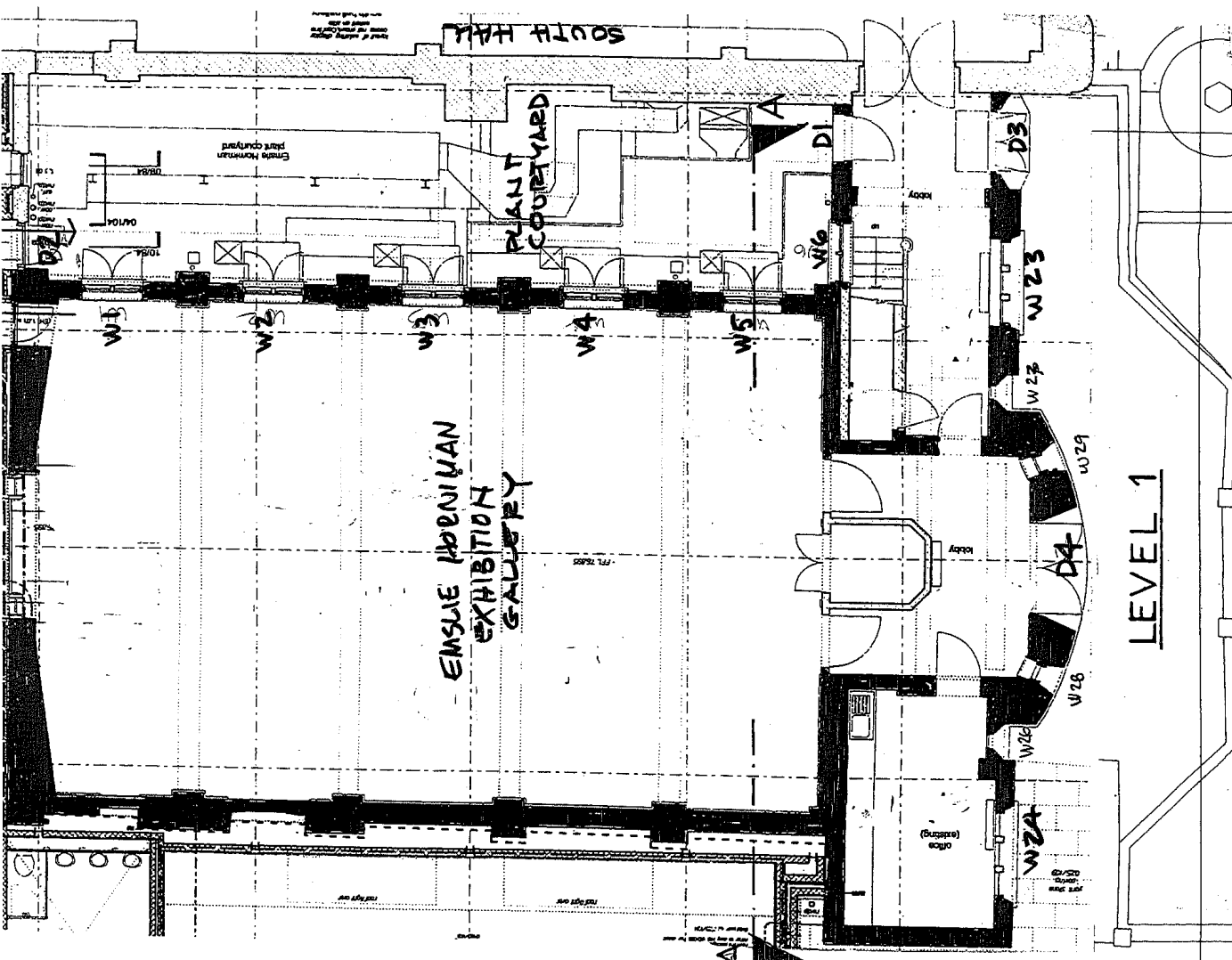


APPENDIX “C”

INFORMATION RELATING  
TO THE SECTION No. 4 WORKS



**HORNIMAN MUSEUM - EMSLIE HORNIMAN BLDG**

**PLANS 1:100 LEVELS 1 & 2**

**24 MAY 11**

**©A3**

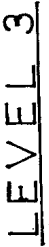
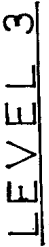
Horniman Museum  
100 London Road  
Forest Hill  
London SE23 3PQ

Telephone  
+44 (0)20 8699 1872

Facsimile  
+44 (0)20 8291 5506

[www.horniman.ac.uk](http://www.horniman.ac.uk)

## A vertical scale with a horizontal line at the top and a vertical line extending downwards. The top is labeled '5M' and the bottom is labeled '0'. There are four tick marks between the top and bottom, dividing the scale into five equal segments.



**HORNIMAN MUSEUM • EMSLIE HORNIMAN BLDG**

Horniman Museum  
100 London Road  
Forest Hill  
London SE23 3PQ

Telephone  
+44 (0)20 8699 1872

Facsimile  
+44 (0)20 8791 5506

**EXTERNAL REDEC**

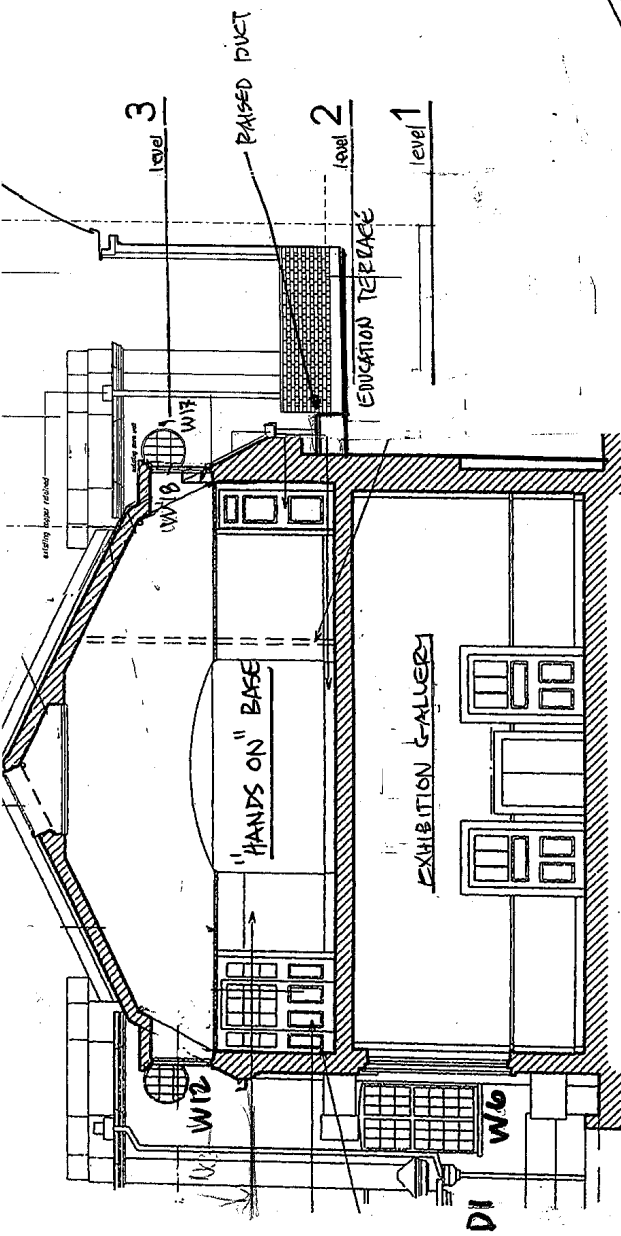
**SECTION & ELEVATION**

1:100 @ A3

28 MAY 11

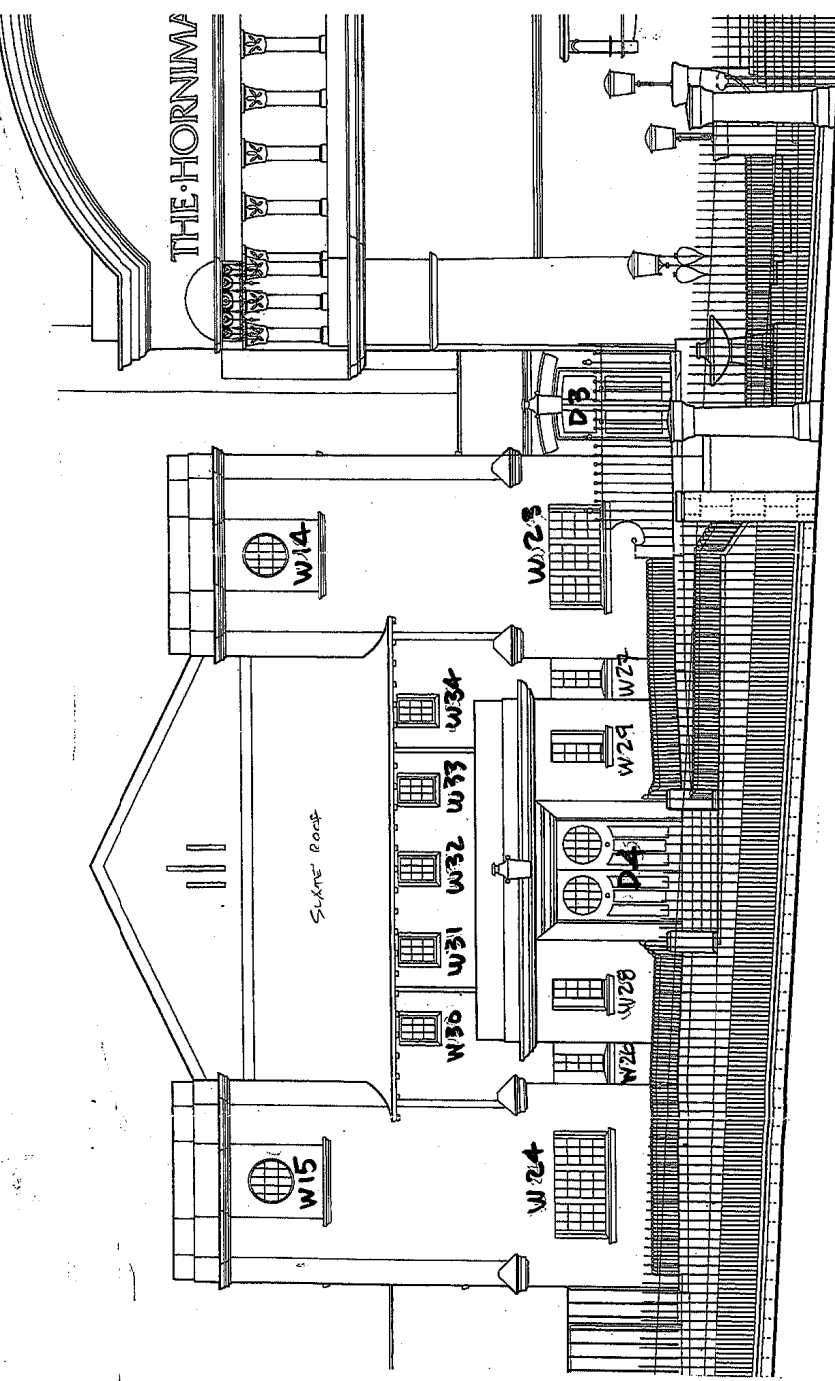
**SOUTH ELEVATION**

FROM LONDON ROAD



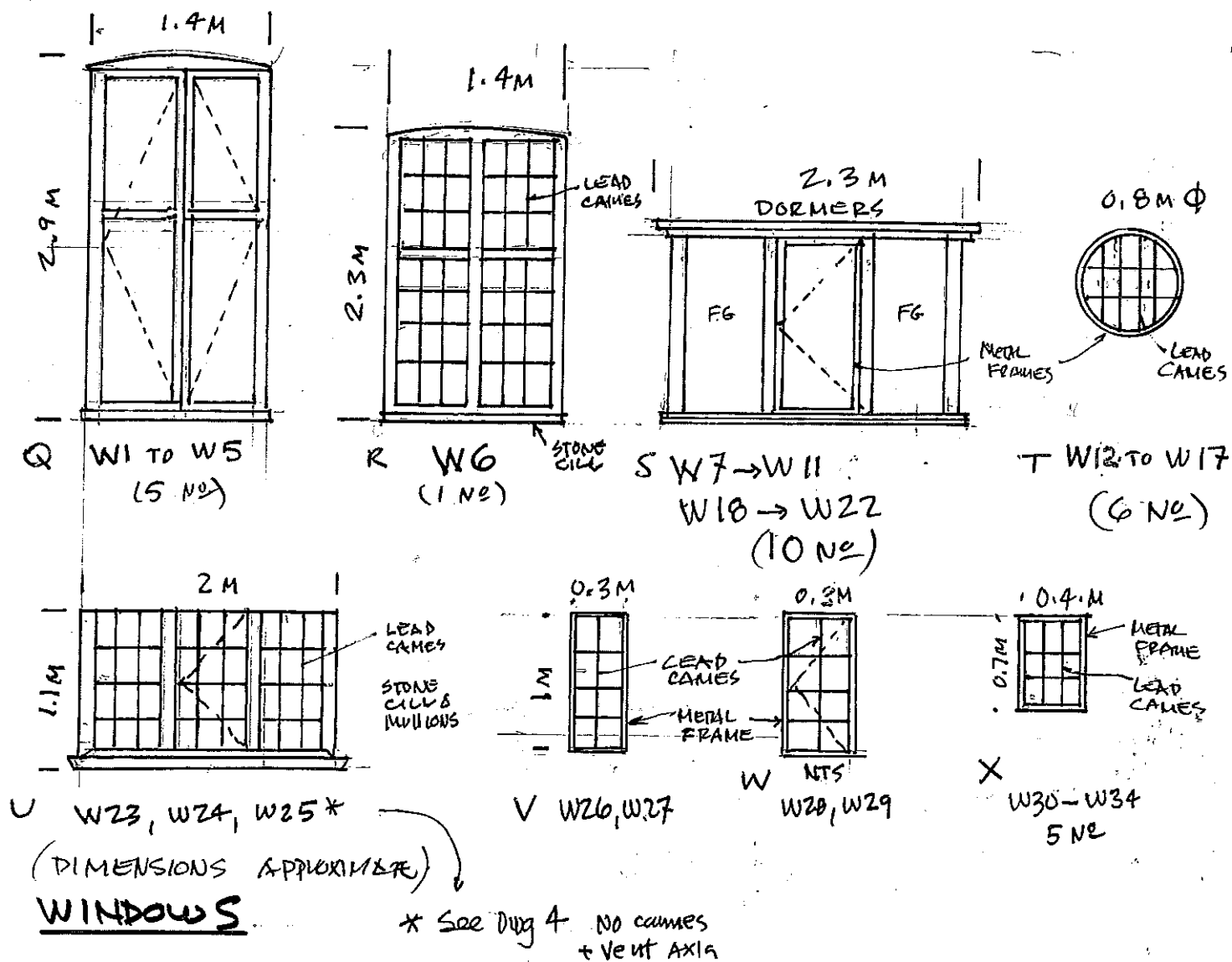
**CROSS SECTION A-A**

LOOKING SOUTH



THE HORNIMAN





## DOORS

See DWGS 1-4

D1 - PAINTED TIMBER

D2 - PAINTED TIMBER

D3 - CLEAR FINISH HARDWOOD, GLAZING W/ LEAD CAMES  
(SIKKENS)

D4 " " " "

SEE DWGS 1-4 FOR LOCATION OF WINDOWS & DOORS

5

**HORNIMAN MUSEUM** • EMSLIE HORNIMAN BLDG

Horniman Museum  
100 London Road  
Forest Hill  
London SE22 3DQ

Telephone  
+44 (0)20 8699 1872  
Facsimile  
+44 (0)20 8699 1872

**WINDOWS/ DOORS** 1:50 @ A4

24 MAR 11