

CBS - IN-VIVO

London Institute of Medical Sciences  
1802.01 Medical Research Council (MRC)

abell nepp  
Issued: 23 Feb 2018

ROOM CRITERIA SHEET					
Behavioural Procedure - Feeding Cage System					CBS Procedure Rooms First Floor
GENERAL	Nominal Area	Occupants	Hours in Use	Equality Act Compliance	Natural Light
	11 nsm	tbc	Full 24 hour use	Compliant	Not Acceptable
Laboratories Only:	<u>Containment</u>	<u>Fumigation</u>	<u>Safety Risks</u>		
	ACDP CL2	No	Biological	-	-
ARCHITECTURAL					
Sound Attenuation	<u>Intern Ambient Noise (dBA)</u>	<u>Mechanical Noise (NR)</u>	Doors	<u>Type 1</u>	<u>Type 2</u>
	See arch. note below	See arch. note below	Type	Door + Half Leaf	-
Floors	<u>Type 1 - 100%</u>	<u>Type 2 - Not Used</u>	Size	1200 mm**	-
Construction	50mm Screed	-	Operation	Swinging	-
Floor Finish	Vinyl	-	Door Material	Timber- Solid Core	-
Skirting	150mm coved	-	Door Finish	HPL	-
			Frame Material	Timber	-
Partitions	<u>Type 1 - 100%</u>	<u>Type 2 - Not Used</u>	Frame Finish	Painted	-
Construction	Blockwork	-	Locks	Key Lock& Thumb Turn	-
Finish	Skiguard Coating	-	Closers	Closer	-
Protection	Wall + Corner Guards	-	Vision Pnl	Vistamatic VP	-
			Protection	Kick Plates	-
Ceiling	<u>Type 1 - 100%</u>	<u>Type 2 - Not Used</u>	Seals	Acoustic	-
System	Special System	-	Other	Light-tight	-
Finish	Special Details	-			
Features	Washable	-	Window Coverings	<u>At Facade</u>	<u>Internal</u>
Height	-	-	Type	Roller Blinds	-
			Light Control	Solar & Grey-out	-
Accessories (non-Lab)	<u>Items</u>	<u>Notes</u>	Operation	Manual	-
	-	-	Manifestations / Film	-	-
	-	-			
	-	-	Shelving (non-lab)	<u>Shelf</u>	<u>Notes</u>
	-	-		-	-
	-	-			
Architectural Notes	Wall and ceiling coatings to be Liquid Plastic/Skiguard or similar. Must ensure external noise does not affect room occupants (when used for reverse cycle experiments). Room to be Home office compliant for holding of rodents, 24/7 operation. Sound Attenuation: Acoustic consultant to advise on Sound Attenuation. Doors: ** Clear opening of full leaf 800 mm minimum. Clear opening of leaf and half between 1000-1200 mm. Doors to have peep holes only, to stop light bleed.				

ENGINEERING					
HVAC	Temp.(°C): Summer 22oC	Temp.(°C): Winter 22oC	Drainage HDPE Chem Resist	-	Structural Loading
Temp.Tolerance ± 2oC	Temp.Variation ± 2oC	Temp.Variation ± 2oC	-	-	Vibration Criteria
Ventilation, supply	General & Dedicated	Negative Airflow	Essential / Standby Power	Special Electrical	-
Comfort Cooling	Air Pressure	Equipment	-	-	-
Humidity 50+-15% RH	See Lab Equip	-	General Lighting	500 Lux	Alarm Systems
Air Filtration	-	-	Switching	Detection	-
P9 Supply	-	-	Diurnal - Scene Set	-	-
Min Air Changes 17 AC/hr (Occupied)	-	-	Other Lighting	Ballast Type	-
Piped Services	-	-	Diurnal	DALI (Dimmable)	-
Water	-	-	-	Emergency Lig	-
Lab CW & HW	-	-	-	Life Safety	Fire Control
-	-	-	-	-	Fire Placement
-	-	-	-	-	-
-	-	-	-	-	-
-	-	-	-	-	-
-	-	-	-	-	-
-	-	-	-	-	-
-	-	-	-	-	-
-	-	-	-	-	-
Engineering Notes					

Behavioural Procedure - Feeding Cage System				
LABORATORY FURNITURE				
Lab Benching	Type	Benchtop Material	Depth	Notes
-	-	-	-	-
-	-	-	-	-
Other LF Elements	Above Lab Bench	-	Other Storage Units	-
-	-	-	-	-
-	-	-	-	-
Lab Sinks	Sink Type	Water Source	Taps	Accessories (assume SD, PTD included)
-	Dbt Sink- Epoxy (Int)	Lab CW & HW	Lever Handle (mixer)	Splash Pnl & Dry Rack
-	Wash Hand Basin	Lab CW & HW	Hands-free (sonar)	Lab Safety Eye Wash
LABORATORY EQUIPMENT (ASE*) refer to MRC list				
Extract Equipment		Name/Model	Quantity	Size
IVC Rack		Biobaq	4 units	16 cages
-		-	-	-
-		-	-	-
Equipment		Name/Model	Quantity	Size
-		-	-	-
-		-	-	-
-		-	-	-

Note: RCSs are preliminary, with detail to be agreed with the Users during RIBA Stage 3.

CBS - IN-VIVO

London Institute of Medical Sciences  
1802.01 Medical Research Council (MRC)

abell nepp  
Issued: 23 Feb 2018

Room Criteria Sheet					
Behavioural Procedure - Metabolic Procedures					
					CBS Procedure Rooms First Floor
GENERAL	Nominal Area	Occupants	Hours in Use	Equality Act Compliance	Natural Light
	15 nsm	tbc	Extended Hours	Compliant	Not Required
Laboratories Only:	Containment ACDP CL2	Fumigation No	Safety Risks Biological	Noise	-
ARCHITECTURAL					
Sound Attenuation	Intern Ambient Noise (dBA)	Mechanical Noise (NR)	Doors	Type 1	Type 2
	See arch. note below	See arch. note below	Type	Door + Half Leaf	-
Floors	Type 1 - 100%	Type 2 - Not Used	Size	1200 mm**	-
Construction	50mm Screed	-	Operation	Swinging	-
Floor Finish	Vinyl	-	Door Material	Timber- Solid Core	-
Skirting	150mm coved	-	Door Finish	HPL	-
Partitions	Type 1 - 100%	Type 2 - Not Used	Frame Material	Timber	-
Construction	Blockwork	-	Frame Finish	Painted	-
Finish	Skaguard coating	-	Locks	Key Lock& Thumb Turn	-
Protection	Wall + Corner Guards	-	Closers	Closer	-
Ceiling	Type 1 - 100%	Type 2 - Not Used	Vision Pnl	Peep Hole Only	-
System	Special System	-	Protection	Kick Plates	-
Finish	Special Details	-	Seals	Acoustic	-
Features	Washable	-	Other	-	-
Height	-	-	Window Coverings	At Facade	Internal
Accessories (non-Lab)	Items	Notes	Type	Roller Blinds	-
-	-	-	Light Control	Solar & Grey-out	-
-	-	-	Operation	Manual	-
-	-	-	Manifestations / Film	-	-
-	-	-	Shelving (non-lab)	Shelf	Notes
-	-	-	-	-	-
Architectural Notes	Access via Behavioural Procedure Anteroom. Wall and ceiling coatings to be Liquid Plastic/Skaguard or similar. Blinds in this room needs to be light tight and privacy shading ideally on the glass when blinds open. Sound Attenuation: Acoustic consultant to advise on Sound Attenuation. Doors: ** Clear opening of full leaf 800 mm minimum. Clear opening of leaf and half between 1000-1200 mm. Doors to have peep holes only, to stop light bleed.				

ENGINEERING					
HVAC		Drainage	Structural		
Temp.(°C): Summer	Temp.(°C): Winter	HDPE Chem Resist	-	Loading	Vibration Criteria
22oC	22oC		-	Equipment	
Temp.Tolerance	Temp.Variation		-		
± 2oC	± 2oC	Electrical			
Ventilation supply	Ventilation exhaust	Power Supply			
Comfort Cooling	General & Dedicated	230v, trunking	-	Data / AV / Comms	
Humidity	Air Pressure	Cleaners outlets	-	Data / AV / Comms	
50+/-15% RH	Negative Airflow		-		
Air Filtration	Equipment	Essential / Standby Power	Special Electrical		
P9 Supply	See Lab Equip			Digital Projection	
Min Air Changes		EM Interference	-	Projector Screen	
17 AC/HR (Occupied)			-		
Piped Services		Lighting		Security / Life Safety	
Water		Lighting	Lux Levels	Security Systems	Alarm Systems
Lab CW & HW	-	General Lighting	500 Lux		
	-	Switching	Detection		
Piped Services	-	Single Control			
Compressed Air	-				
Nitrogen	-	Other Lighting	Ballast Type	Fire Detection	
	-	Task Lighting	DALI (Dimmable)	CCTV	
Bottled Gases	-		Emergency Use	Fire Control	FE Placement
	-		Life Safety		
	-				
	-				
	-				
	-				
	-				
	-				
	-				
	-				
	-				
	-				
	-				
	-				
	-				
	-				
	-				
	-				
	-				
	-				
	-				
	-				
	-				
	-				
	-				
	-				
	-				
	-				
	-				
	-				
	-				
	-				
	-				
	-				
	-				
	-				
	-				
	-				
	-				
	-				
	-				
	-				
	-				
	-				
	-				
	-				
	-				
	-				
	-				
	-				
	-				
	-				
	-				
	-				
	-				
	-				
	-				
	-				
	-				
	-				
	-				
	-				
	-				
	-				
	-				
	-				
	-				
	-				
	-				
	-				
	-				
	-				
	-				
	-				
	-				
	-				
	-				
	-				
	-				
	-				
	-				
	-				
	-				
	-				
	-				
	-				
	-				
	-				
	-				
	-				
	-				
	-				
	-				
	-				
	-				
	-				
	-				
	-				
	-				
	-				
	-				
	-				
	-				
	-				
	-				
	-				
	-				
	-				
	-				
	-				
	-				
	-				
	-				
	-				
	-				
	-				
	-				
	-				
	-				
	-				
	-				
	-				
	-				
	-				
	-				
	-				
	-				
	-				
	-				
	-				
	-				
	-				
	-				
	-				
	-				
	-				
	-				
	-				
	-				
	-				
	-				
	-				
	-				
	-				
	-				
	-				
	-				
	-				
	-				
	-				
	-				
	-				
	-				
	-				
	-				
	-				
	-				
	-				
	-				
	-				
	-				
	-				
	-				
	-				
	-				
	-				
	-				
	-				
	-				
	-				
	-				
	-				
	-				
	-				
	-				
	-				
	-				
	-				
	-				
	-				
	-				
	-				
	-				
	-				
	-				
	-				
	-				
	-				
	-				
	-</				

Behavioural Procedure - Metabolic Procedures					
LABORATORY FURNITURE					
Lab Benching	Type Bench, Movable	Benchtop Material Trespa Toplab Base	Depth 750mm	Notes	
	-	-	-		
Other LF Elements	Above Lab Bench		Other Storage Units		
	-	-	-	-	-
	-	-	-	-	-
Lab Sinks	Sink Type Wash Hand Basin	Water Source Lab CW & HW	Taps Hands-free (sonar)	Accessories (assume SD, PTD included) Lab Safety Eye Wash	
	-	-	-	-	-
LABORATORY EQUIPMENT (ASE*) refer toMRC list					
	Extract Equipment	Name/Model	Quantity	Size	Furnish - Install**
	-	-	-	-	-
	-	-	-	-	-
	Equipment	Name/Model	Quantity	Size	Furnish - Install**
	-	-	-	-	-
	-	-	-	-	-

Note: RCSs are preliminary, with detail to be agreed with the Users during RIBA Stage 3.

CBS - IN-VIVO

London Institute of Medical Sciences  
1802.01 Medical Research Council (MRC)

abell nepp  
Issued: 23 Feb 2018

ROOM CRITERIA SHEET					
Behavioural Procedure - Laser Room - Optogenetics					
GENERAL					CBS Procedure Rooms
					First Floor
	Nominal Area	Occupants	Hours in Use	Equality Act Compliance	Natural Light
	15 nsm	tbc	Extended Hours	Compliant	Not Required
	Laboratories Only:	Containment	Fumigation	Safety Risks	
ARCHITECTURAL	Sound Attenuation	Intern Ambient Noise (dBA)	Mechanical Noise (NR)	Doors	
	See arch. note below	See arch. note below			
Floors	Type 1 - 100%	Type 2 - Not Used	Type	Type 1	Type 2
	Construction	50mm Screed	Size	Door + Half Leaf	-
	Floor Finish	Vinyl	Operation	Swinging	-
	Skirting	150mm coved	Door Material	Timber- Solid Core	-
Partitions	Type 1 - 100%	Type 2 - Not Used	Door Finish	HPL	-
	Construction	Blockwork	Frame Material	Timber	-
	Finish	Skaguard coating	Frame Finish	Painted	-
	Protection	Wall + Corner Guards	Locks	Key Lock& Thumb Turn	-
Ceiling	Type 1 - 100%	Type 2 - Not Used	Closers	Closer	-
	System	Special System	Vision Pnl	Peep Hole Only	-
	Finish	Special Details	Protection	Kick Plates	-
	Features	Washable	Seals	Light-tight	-
Accessories (non-Lab)	Height	-	Other	-	-
	Items	Notes	Window Coverings	At Facade	Internal
	-	-	Type	Roller Blinds	-
	-	-	Light Control	Solar & Grey-out	-
Architectural Notes	-	-	Operation	Manual	-
	-	-	Manifestations / Film	-	-
	-	-	Shelving (non-lab)	Shelf	Notes
	-	-	-	-	-
Access via Behavioural Procedure Anteroom. Wall and ceiling coatings to be Liquid Plastic/Skaguard or similar. Blinds in this room needs to be light tight and privacy shading ideally on the glass when blinds open. Sound Attenuation: Acoustic consultant to advise on Sound Attenuation. Doors: ** Clear opening of full leaf 800 mm minimum. Clear opening of leaf and half between 1000-1200 mm. Doors to have peep holes only, to stop light bleed.					

ENGINEERING					
HVAC	Temp.(°C): Summer	Temp.(°C): Winter	Drainage	Structural	
	22oC	22oC	HDPE Chem Resist	Loading	Vibration Criteria
Temp.Tolerance	Temp.Variation		-	Equipment	-
± 2oC	± 2oC		Electrical	-	
Ventilation, supply	Ventilation, exhaust		Power Supply		
Comfort Cooling	General & Dedicated		230v, trunking	Data / AV / Comms	
Humidity	Air Pressure		Cleaners outlets	Data / AV / Comms	
50+/ -15% RH	Negative Airflow		-	-	-
Air Filtration	Equipment		Essential / Standby Power	Special Electrical	-
F9 Supply	See Lab Equip		-	Digital Projection	-
Min Air Changes	-		EM Interference	-	-
17 AC/NR (Occupied)	-		-	Projector Screen	-
Piped Services	-		-	-	-
Water			Lighting		
Lab CW & HW	-		Lighting	Lux Levels	Security / Life Safety
-	-		General Lighting	500 Lux	Security Systems
Piped Services	-		Switching	Detection	Alarm Systems
Compressed Air	-		Single Control	-	-
Nitrogen	-		-	-	-
-	-		Other Lighting	Ballast Type	Fire Detection
Bottled Gases	-		Task Lighting	DALI (Dimmable)	-
-	-		-	Emergency Lit	-
-	-		-	Life Safety	Fire Control
-	-		-	-	FE Placement
-	-		-	-	-
Engineering Notes					

Behavioural Procedure - Laser Room - Optogenetics					
LABORATORY FURNITURE					
Lab Benching	Type	Benchtop Material	Depth	Notes	
	Bench, Movable	Trespa Toplab Base	750mm	-	-
Other LF Elements	-	-	-	-	-
	Above Lab Bench	-	Other Storage Units	-	-
	-	-	-	-	-
	-	-	-	-	-
Lab Sinks	Sink Type	Water Source	Taps	Accessories (assume SD, PTD included)	
	Wash Hand Basin	Lab CW & HW	Hands-free (sonar)	Lab Safety Eye Wash	-
LABORATORY EQUIPMENT (ASE*) refer toMRC list					
* ASE = Architecturally /Engineering Significant Equipment ** O = Owner C= Contractor					
Extract Equipment	Name/Model	Quantity	Size	Furnish - Install**	
-	-	-	-	-	
-	-	-	-	-	
Equipment	Name/Model	Quantity	Size	Furnish - Install**	
-	-	-	-	-	
-	-	-	-	-	

Note: RCSs are preliminary, with detail to be agreed with the Users during RIBA Stage 3.



D Room Criteria Sheets

- D.1 General Room Criteria Sheet
- D.2 Science Room Criteria Sheets

D Room Criteria Sheets
D.1 General Room Criteria Sheet



Project name: London Institute of Medical Sciences
Project number: 17034
Document reference: 17034\_LIMS\_HHBA-00-XX-SH-A-00-0001
Title: Stage 2 Indicative Architectural Room Finishes
Revision: 001
Date: 09/02/18
Notes: Please note that the information below is an indicative list of finishes representative of a RIBA Stage 2 concept design. It is aimed at providing some high-level guidance for the cost report of the Stage 2 design. For information on SLMF and laboratory spaces, please refer to Buro Happold & Abul Hopp's design information respectively.
The information within is likely to change as the design develops through the later work stages.

Table with 5 columns: Accommodation group/Room name, Location/floor, Finish/Requirements, no., Further notes. Rows include Reception, Facilities manager, Administration (Head of department, Administrator's office, Accounts office), Meeting and seminar (Large seminar space, Small flexible rooms, Large flexible rooms), Canteen/cafeteria, Staff offices (Open-plan office, Professor's offices), Circulation (Main Stair, Escapes/Access Stairs), Toilets and cleaning, Typical WCs, Central support (Central plant, Goods-in, Laundry, Waste store, Gas compound, Audio group and store, High-up architecture), Research laboratories (Research labs, Distributed support, Technician's offices, House offices, Examination rooms, Prep rooms), Bioinformatics, M.E.P plant space (00 Plant, 01 Plant, 02 Plant, 03 Plant).

D Room Criteria Sheets
D.2 Science Room Criteria Sheets

London Institute of Medical Sciences
1802.01 Medical Research Council (MRC)

abell nepp
Issued: 23 Feb 2018

ROOM CRITERIA SHEET
PRIMARY WET LABORATORY (incl. Entry Equipment and Freezer Bay)
Room ID:
Primary Department
Floor: 2-6
Standardised biomedical lab facilities with close proximity to tissue culture, freezer and equipment bays.

GENERAL	Nominal Area 135 msm	Occupants 27 msm	Hours in Use Extended Hours	Equality Act Compliance Compliant	Natural Light Desirable
Laboratories Only:	Containment ACDP CL2	Fumigation No	Safety Risks Biological	-	-

ARCHITECTURAL

Sound Attenuation	Intern Ambient Noise (dBA) Normal Attenuation	Mechanical Noise (NR) NR 40 (tbc)	Doors Type Door + Half Leaf	Type 1 Type 2	Type 2 Single Door
Floors	Type 1 - 100%	Type 2 - Not Used	Size (C/O)	1200 mm *	900 mm
Construction	50mm Screed	-	Operation	Swinging	Swinging
Floor Finish	Vinyl	-	Door Material	Glass/Metal Frame	Glass/Metal Frame
Skirting	Coved	-	Door Finish	-	-
Partitions	Type 1 - 100%	Type 2 - Not Used	Frame Material	Metal	Metal
Construction	Plasterboard & Skim	-	Frame Finish	Powder-coated	Powder-coated
Finish	Paint	-	Locks	Lock	Lock
Protection	Wall + Corner Guards	-	Closers	Closer	Closer
CEILING	Type 1 - 100%	Type 2 - Not Used	Vision Pnl	-	-
System	Accessible Grid	-	Protection	Kick Plates	Kick Plates
Finish	Metal Tiles w/ PL marg	-	Seals	-	-
Features	Washable	-	Other	-	-
Height	TBC	-	Window Coverings	At Facade	Internal
Accessories (non-Lab)	Boms	Notes	Type	Roller Blinds	Roller Blinds
	Coat Hooks	-	Light Control	Anti-Glare	Anti-Glare
	-	-	Operation	Manual Draw	Manual Draw
	-	-	Manifestations / Film	-	-
	-	-	Shelving (non-lab)	Shelf	Notes
	-	-		-	-

Architectural Notes

Sound Attenuation: Acoustic consultant to advise on Sound Attenuation. Ceiling Finish: special detail design required for raft/raffle (or similar) to incorporate lighting and conceal services. \* Clear opening of full leaf 800 mm minimum. Clear opening of leaf and half between 1000-1200 mm. Note - Exposed Concrete Columns sealed/painted. Ceiling - Finish: PB marg - plasterboard margin.

ENGINEERING				
HVAC		Drainage		Structural
Temp (°C) - Summer	Temp (°C) - Winter	HDPE Chem Resist	-	Loading
24oC	22oC	-	-	Lab, normal
Temp Tolerance	Temp Variation	-	-	Equipment
± 2oC	± 2oC / Hour	Electrical		-
Ventilation, supply	Ventilation, exhaust	Power Supply		
Comfort Cooling	General & Dedicated	230v, trunking	-	Data / AV / Comms
Humidity	Air Pressure	Cleaners outlets	-	Data
Not controlled	Negative Airflow	Fused Spur	-	Wireless
Air Filtration	Equipment	Essential / Standby Power	-	Digital Projection
F7 Supply (80-85%)	See Lab Equip	-	-	Projector Screens
Min Air Changes	-	EM Interference	-	-
4 Day (2 Night) /HR	-	-	-	-
Piped Services		Lighting		Security / Life Safety
Water		Lighting		Alarm Systems
Lab CW (Cat 5)	-	Lux Levels	500 Lux	Access Control
Dom CW & HW	-	General Lighting	-	-
Piped Services	-	Switching	Detection	-
Compressed Air	-	Single Control	Daylight Detection	-
Nitrogen	-	Other Lighting	Bolus Type	-
Bottom Gases	-	Task Lighting	DALI (Dimmable)	Smoke Detector
-	-	-	Emergency Litg	-
-	-	-	Life Safety	Fire Control
-	-	-	-	Sprinklers- Water
-	-	-	-	-
-	-	-	-	-
-	-	-	-	-
Engineering Notes				

PRIMARY WET LABORATORY (incl. Entry Equipment and Freezer Bay)	Room ID:
LABORATORY FURNITURE	
Lab Benching	Type Bench, Movable Benchtop Material Trespa Toplab Base Depth 750mm Notes Supplier: Labflex
Other LF Elements	Above Lab Bench Shelving, bench mtd Services Dropper/Portal Other Storage Units under bench drawer unit under bench cupboard un
Lab Sinks	Sink Type Sink- Epoxy (Integral) Wash Hand Basin Water Source Lab CW (Cat 5) CW / HW Taps Lever Handle (mixer) Handi-free (sonar) Accessories (assume SD, PTD included) Splash Pnl & Dry Rack Lab Safety Eye Wash
LABORATORY EQUIPMENT (ASE*)	* ASE = Architecturally / Engineering Significant Equipment ** O = Owner C = Contractor
Extract Equipment Fume Cupboard	Name/Model TBC Quantity 1 unit Size Assume 900d x 1500w Furnish - Install** Group 2 (OF-C)
Equipment Freezer -80oC	Name/Model TBC Quantity 3 units Size Assume - Furnish - Install** Group 2 (OF-C)

D Room Criteria Sheets
D.2 Science Room Criteria Sheets

London Institute of Medical Sciences
1802.01 Medical Research Council (MRC)

abell nepp
Issued: 23 Feb 2018

ROOM CRITERIA SHEET

Table with 2 columns: TISSUE CULTURE (TC) and Room ID: Dedicated Secondary Floor: 2-6

Table with 6 columns: GENERAL, Nominal Area, Occupants, Hours in Use, Equality Act Compliance, Natural Light

Table with 6 columns: ARCHITECTURAL, Sound Attenuation, Floors, Partitions, Ceiling, Accessories (non-Lab), Architectural Notes

Table with 6 columns: ENGINEERING, HVAC, Drainage, Electrical, Lighting, Structural, Security / Life Safety

TISSUE CULTURE (TC) Room ID:

Table with 5 columns: LABORATORY FURNITURE, Lab Benching, Other LF Elements, Lab Sinks, Architectural Notes



D Room Criteria Sheets
D.2 Science Room Criteria Sheets

London Institute of Medical Sciences
1802.01 Medical Research Council (MRC)
abell nepp
Issued: 23 Feb 2018

ROOM CRITERIA SHEET
DARKENABLE ROOM
Room ID:
Dedicated Secondary
Floor: Levels 3+5
2no provided within the building for specialist microscope work.

GENERAL
Nominal Area: 11 msm
Occupants: 2 msm
Hours in Use: Extended Hours
Equality Act Compliance: Compliant
Natural Light: Not Acceptable
Laboratories Only: Containment: ACDP CL2
Fumigation: No
Safety Risks: Biological

ARCHITECTURAL
Sound Attenuation: Intern Ambient Noise (dBA): NR 40 (tbc)
Normal Attenuation: Type 1 - 100%
Type 2 - Not Used
Floors: Construction: 50mm Screed
Floor Finish: Vinyl
Skirting: 150mm coved
Partitions: Type 1 - 100%
Construction: Plasterboard & Skim
Finish: Paint
Protection: -
Ceiling: Type 1 - 100%
System: Plasterboard
Finish: Paint
Features: Wipeable
Height: 3000 mm
Accessories (non-Lab): Items: Notes
Coat Hooks: 3 no.

Architectural Notes
Room needs to be light-tight (drop seal, tight to frame, frame sealed to door when closed). Dark room light system and warning light outside room. Need an extract spigot (thimble) to allow for local exhaust to equipment or bench top LEV to be added.

ENGINEERING
HVAC
Temp (°C): Summer: 24oC
Temp Tolerance: ± 2oC / Hour
Ventilation supply: Ventilation, exhaust, General Extract
Humidity: Air Pressure: Negative Airflow
Not controlled: Equipment: Essential / Standby Power
Air Filtration: See Lab Equip
F7 Supply (80-85%)
Min Air Changes: 4 Day (2 Night) /HR
Piped Services
Water: Lab CW & HW
Piped Services: Compressed Air
Nitrogen: Bottom Gases
Engineering Notes
Safe light 'ON' sign outside room

Drainage
HDPE Chem Resist
Electrical
Power Supply: 230v, trunking
Cleaners outlets
Fused Spur
Essential / Standby Power
EM Interference
Lighting
Lux Levels: 200 Lux
General Lighting: Switching
Scene Setting: Other Lighting
DALI (Dimmable)
Emergency Lig
Structural
Loading: Lab, normal
Equipment: Noise & Vibration
Data / AV / Comms
Data / AV / Comms
Data
Wireless
Digital Projection
Projector Screens
Security / Life Safety
Security Systems: Alarm Systems
Fire Detection: Fire Detection
Smoke Detect/Sound: CCTV
Fire Control: Fire Placement
Sprinklers- Water

DARKENABLE ROOM
Room ID:
LABORATORY FURNITURE
Lab Benching
Type: Bench, Movable
Benchtop Material: Trespa Toplab Base
Depth: 750mm
Notes:
Other LF Elements
Above Lab Bench Shelving, bench mtd
Other Storage Units
Lab Sinks
Sink Type: Sink- Epoxy (Integral)
Water Source: Lab CW & HW
Taps: Lever Handle (mixer)
Accessories (assume SD, PTD included): Splash Pnl & Dry Rack
Architectural Notes
LABORATORY EQUIPMENT (ASE\*)
Extract Equipment: Name/Model: Quantity: Size: Furnish - Install\*\*
Equipment: Name/Model: Quantity: Size: Furnish - Install\*\*
Microscope: TBC

D Room Criteria Sheets
D.2 Science Room Criteria Sheets

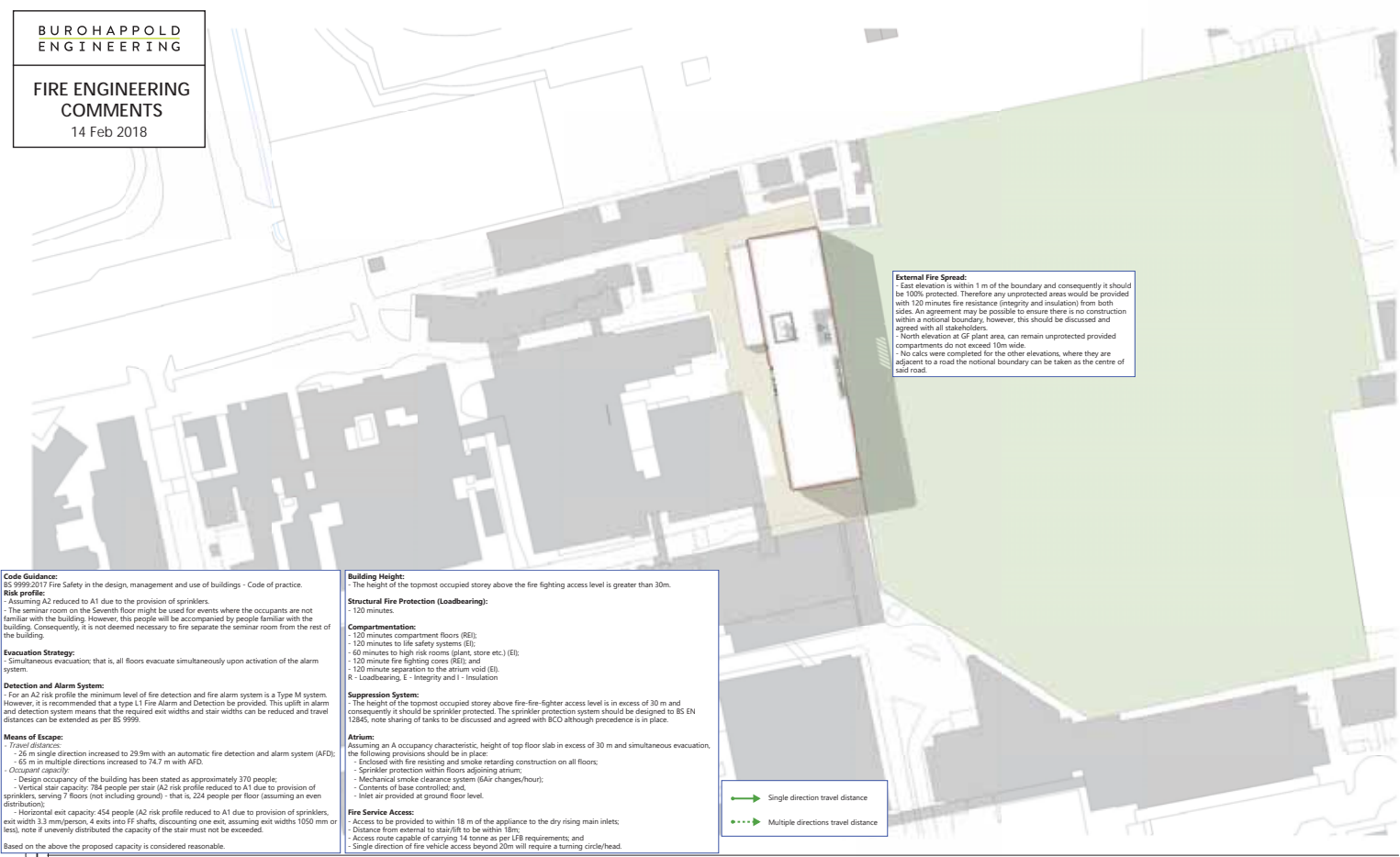
London Institute of Medical Sciences
1802.01 Medical Research Council (MRC)
abell nepp
Issued: 23 Feb 2018

ROOM CRITERIA SHEET
COLD ROOM
Room ID:
Dedicated Secondary Floor: 2-6
+4C Controlled temperature room for laboratory work and storage. 1no provided on each floor.
GENERAL
Nominal Area: 11 sqm
Occupants:
Hours in Use: Extended Hours
Equality Act Compliance: Compliant
Natural Light: Not Required
Laboratories Only: Containment: ACOP CL2
Fumigation: No
Safety Risks: Biological
ARCHITECTURAL
Sound Attenuation: Intern Ambient Noise (dBA) See arch. Note
Floors: Type 1 - 100%
Construction: Proprietary
Floor Finish: non-slip vinyl
Skirting: 150mm coved
Partitions: Type 1 - 100%
Construction: Proprietary
Finish:
Protection:
Ceiling: Type 1 - 100%
System: Proprietary
Finish:
Features: Wipeable
Height:
Accessories (non-Lab): Items:
Notes:
Architectural Notes: Proprietary pre-fabricated controlled temperature room; slab not recessed for floor construction. Partition panels and ceilings to be insulated. Requires an internal release mechanism to prevent personnel from being locked in. Requires alarm signal switch to allow trapped personnel to activate an external audible alarm and notify site security via central building control system. Sink and power/data required

ENGINEERING
HVAC
Temp (°C) - Summer: 24°C
Temp (°C) - Winter: 18°C
Temp Tolerance:
Ventilation, supply:
Humidity:
Not controlled:
Air Filtration:
Min Air Changes:
Piped Services
Water:
Piped Services:
Boothed Gases:
Engineering Notes

COLD ROOM
Room ID:
LABORATORY FURNITURE
Lab Benching
Type: Bench, Movable
Equipment Trolley:
Other LF Elements
Above Lab Bench:
Lab Sinks
Sink Type: Sink - Epoxy (integral)
Water Source: Lab CW (Cat 5)
Taps: Lever Handle (mixer)
Accessories (assume SD, PTD included):





# FIRE ENGINEERING COMMENTS

14 Feb 2018

With the gas store being directly adjacent to the plant room, the lobby separating the two should be 100% protected at this level.

60 minute separation to the AHU plenum is recommended.

An additional lobby should be provided between the reception lounge and the protected final exit route from the stair to external. All accommodation which is access off the fire fighting access route should be lobby protected.

As this is essentially an extension of the fire fighting stair only the smoke ventilation shaft, and dry fire main should be access from this space.

This elevation appears to be within 1m of the boundary, therefore to comply with code guidance 100% protection should be provided to this elevation throughout height of the building. It may be possible to seek a legal agreement to be sought to ensure building will not be built within a not distance to ensure a fire cannot spread between buildings.

Since the floor area exceeds 900 m<sup>2</sup> two fire-fighting shafts should be provided. These fire-fighting shafts include a fire-fighting stair, fire-fighting lobby and dry riser.

The final exit route from the stair should be protected by fire-resisting construction to the same level as the stair, which is FR 120 min since it is a FF shaft.

Fire service pumping appliance parking position to be within 18 m of dry riser inlet and the inlet should be visible from the appliance. This looks to be achieved within the current arrangement.

Please confirm the means of escape from this area. This suite should not open into the final exit route of the stair. If it is not possible to avoid this, then a lobby should be provided between the suite and the protected final exit.

For life-safety 0 minutes fire resistance is acceptable, however, specialist suppliers may require a higher performance rating.

Delivery area much less than 200sqm therefore no requirement for smoke clearance system.

# FIRE ENGINEERING COMMENTS

14 Feb 2018

To comply with building regulations a minimum of one refuge per stair is required. However, the number of wheelchair refuges should be informed by the predicted number of wheelchair users. This should be informed by the Client. The wheelchair refuge should not encroach on the flow of the stair.

One exit from each of these CBS spaces, is insufficient to meet travel distance limitations therefore it is recommended an additional exit is provided remote from the current provision when the final layout is considered.

Fire-fighting shaft.

This wall forms part of the FF shaft and should achieve FR 120 min. The door should be also be a fire door, achieving FD60S.

Please ensure LS Riser is not accessible from fire fighting lobby.

47.2 m

45.6 m

46.9 m

**External fire spread:**  
Please refer to the EM Fire Comments on the GAs. Note, The East façade will need to be 100% protected and the North façade may need to be divided into separate fire compartments.

In order for there to be two alternative egress routes there will need to be fire separation between the two fire-fighting cores. This includes cross-corridor fire doors. Two options for the line of fire separation are shown in pink. The minimum fire resistance of the separation is 30 minutes. Note, fire doors could be provided with hold-open devices if needed.

Please ensure the fire-fighting shafts on this floor align with those on other levels; there should be a fire door in the Public Corridor to enclose the fire fighting shaft.



# FIRE ENGINEERING COMMENTS

14 Feb 2018

Note: Same comments for  
floors Three to Six.

Provided there will be no cooking at these tea points  
it is considered reasonable for these not to be  
provided with fire resisting construction.

The atrium should be enclosed by 120  
minute fire resisting and smoke retarding  
construction on all floors. Please see  
comments on page one which describes  
the atrium fire strategy.

Escape routes should  
be kept clear at all  
times (minimum  
width 1200mm wide)

inner rooms,  
please see general  
note on inner  
rooms.

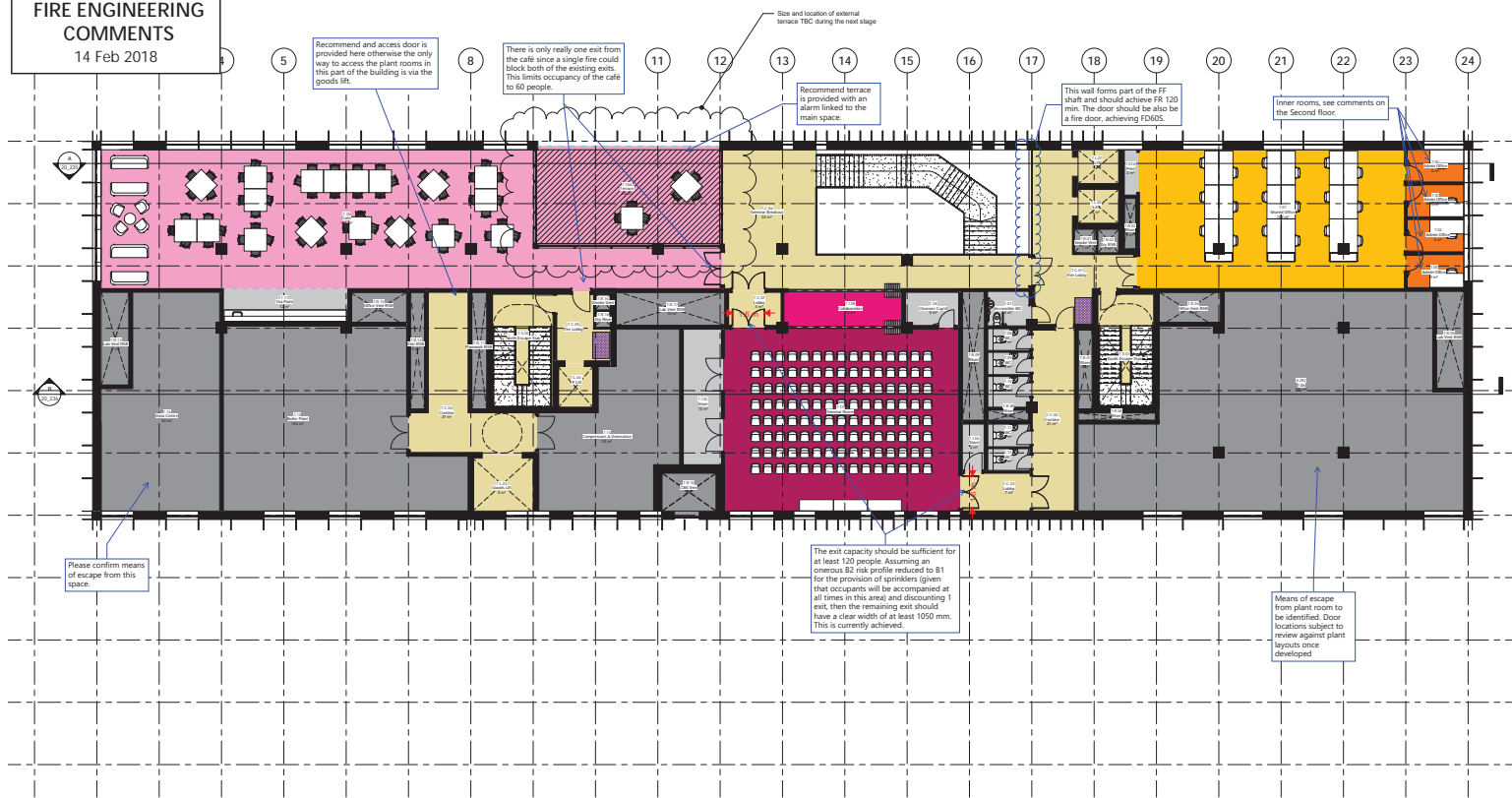
Wheelchair refuges should be at least 1,400 mm  
x 900 mm and provided with a two-way  
emergency voice communication (EVC) system.  
This should be linked to the main fire alarm panel  
at ground floor level.

**General Note on inner rooms:**  
Inner rooms should be avoided where practicable. However, if  
they are unavoidable, then one of the following arrangements is  
required: 1) the enclosures of the inner room stop at least 500 mm  
below the ceiling; or 2) a suitably sized vision panel not less than  
0.1 m<sup>2</sup> is located in the door or walls of the inner room; or 3) the  
access room is protected by an automatic smoke detector that  
either operates an alarm that is immediately audible in the inner  
room or gives an immediate visual alarm in the inner room if the  
ambient noise levels are so great as to make an alarm inaudible.



# FIRE ENGINEERING COMMENTS

14 Feb 2018

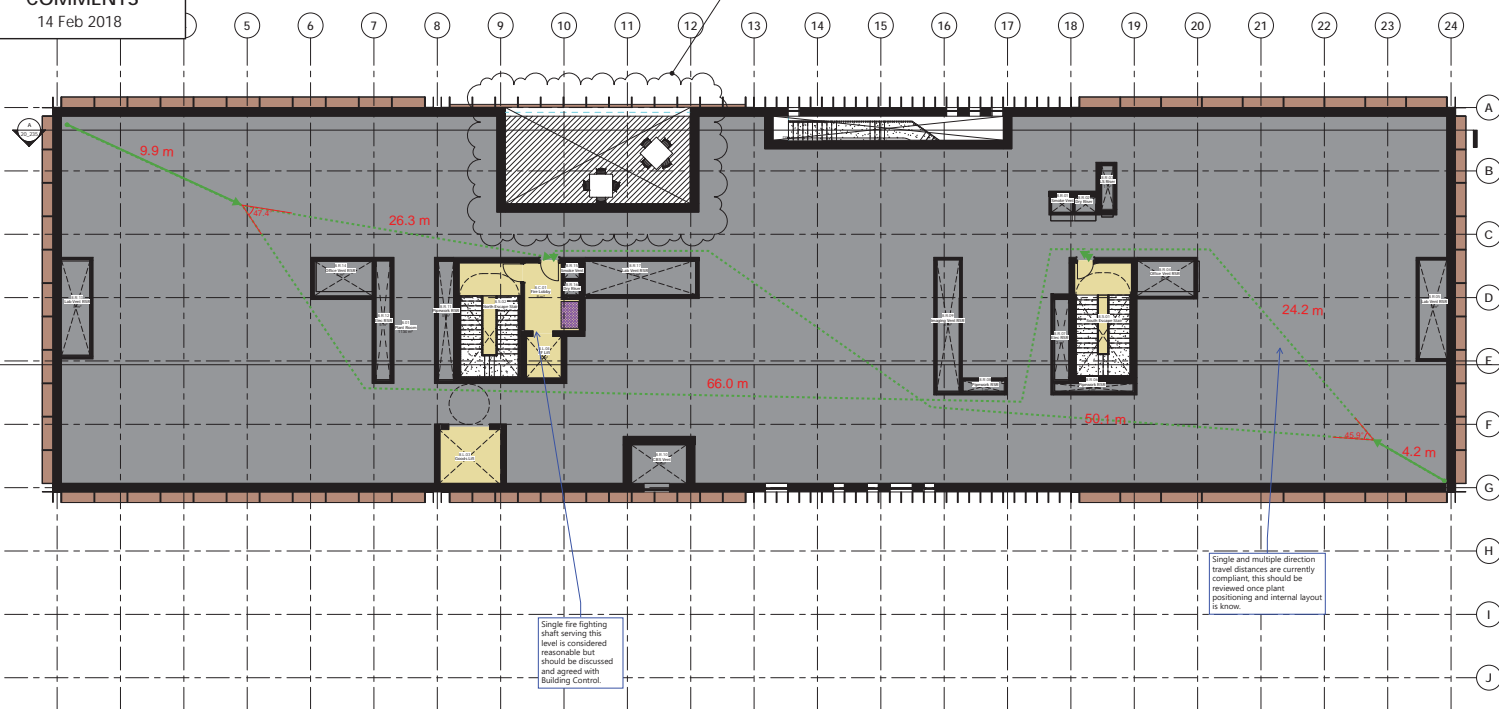


FIRE ENGINEERING  
COMMENTS  
14 Feb 2018

Size and location of external  
terrace TBC during the next stage

Single fire fighting  
shaft serving this  
level is considered  
reasonable but  
should be discussed  
and agreed with  
Building Control.

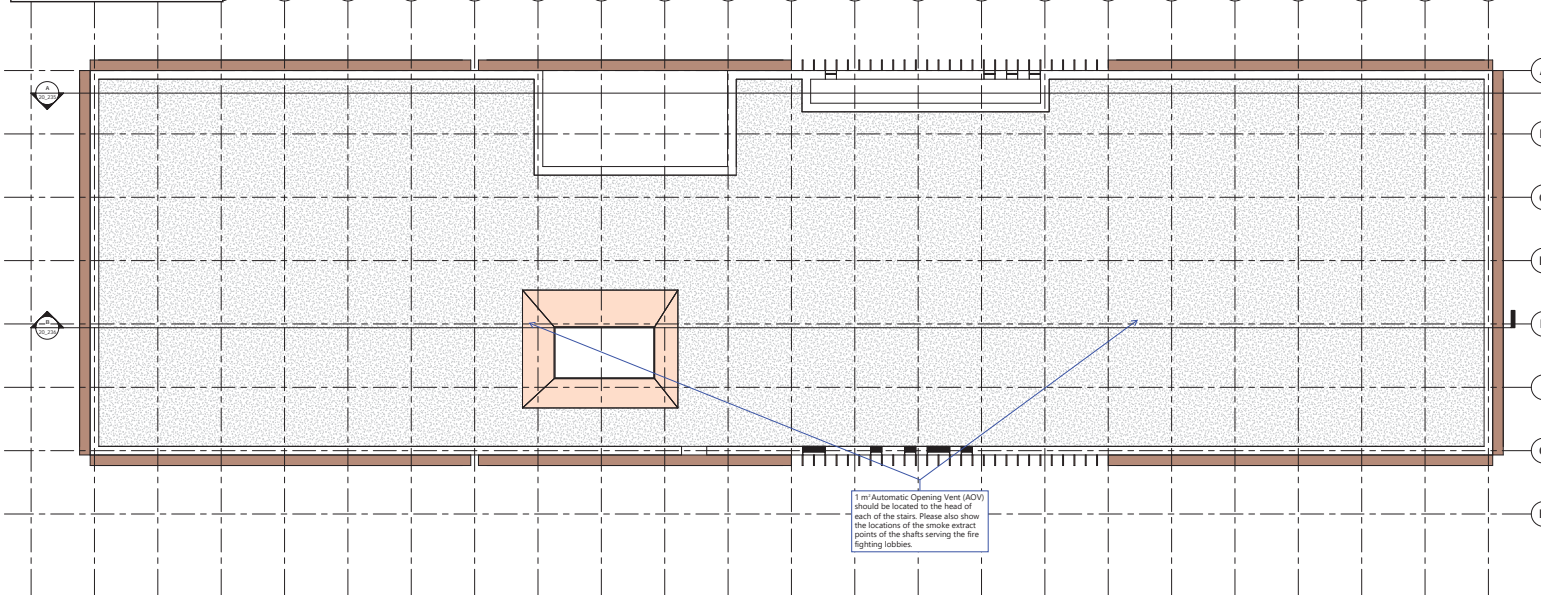
Single and multiple direction  
travel distances are currently  
compliant, this should be  
reviewed once plant  
positioning and internal layout  
is known.

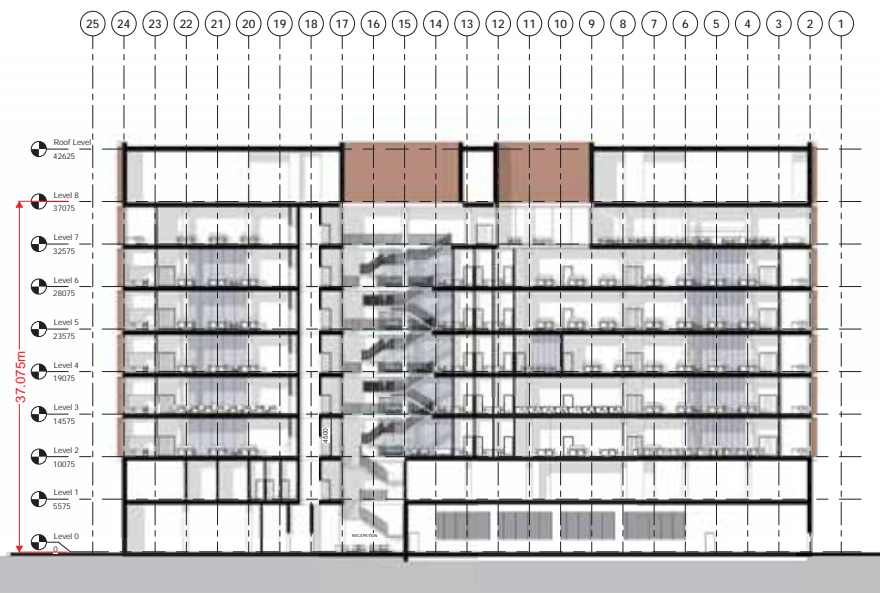


FIRE ENGINEERING  
COMMENTS

14 Feb 2018

5 6 7 8 9 10 11 12 13 14 15 16 17 18 19 20 21 22 23 24





A Section AA  
1 : 200



Contact

AJ100 Practice of the Year 2016 & 2017  
Winner

London\

159 St John Street  
EC1V 4QJ  
+44 (0)20 7336 8030  
mail@hawkinsbrown.com

Manchester\

3C Tariff Street  
M1 2FF  
+44 (0)161 641 5522  
mail@hawkinsbrown.com

hawkinsbrown.com