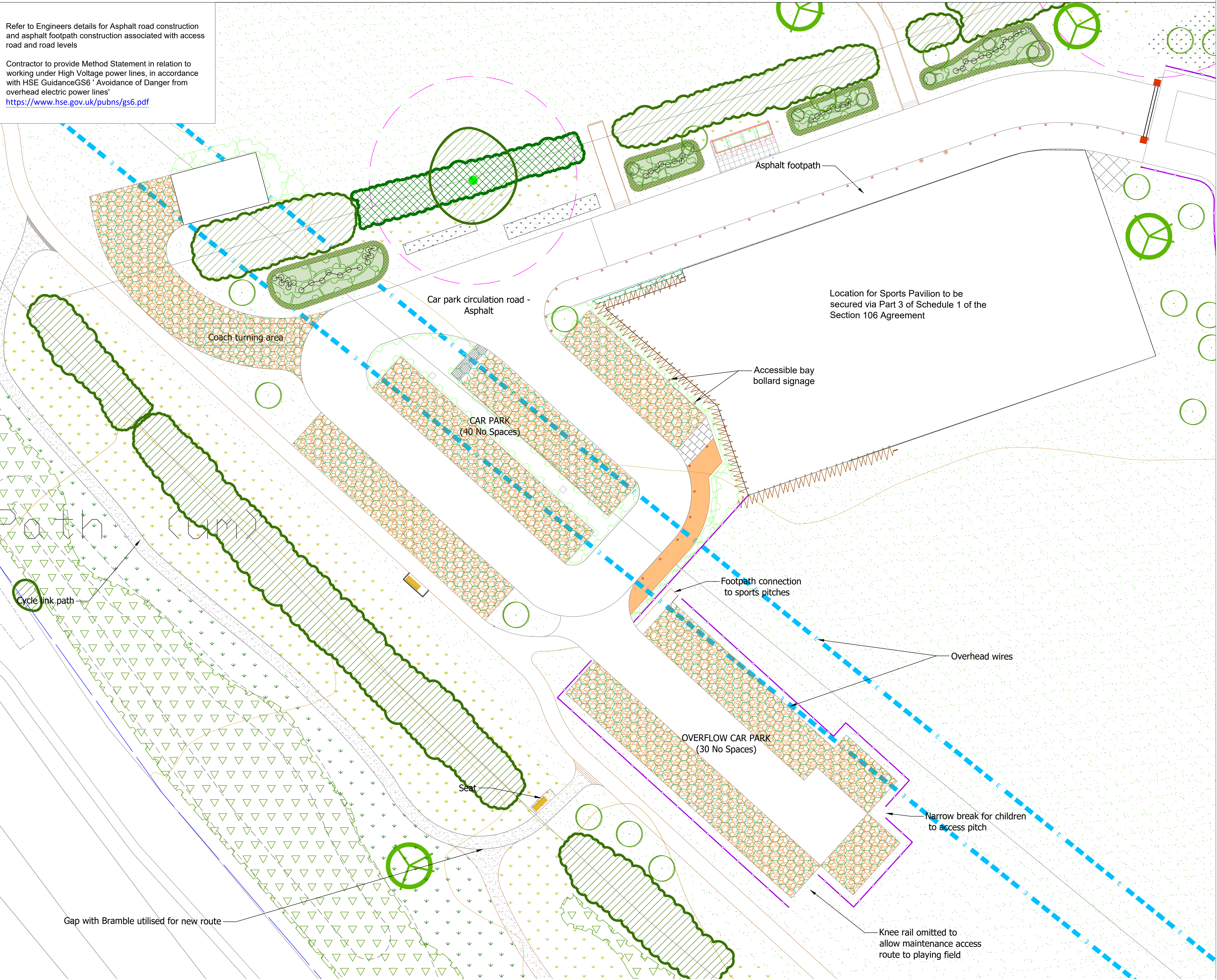


Phase 18 St Giles Park Sports Pavilion Access Road and Car Park Proposals

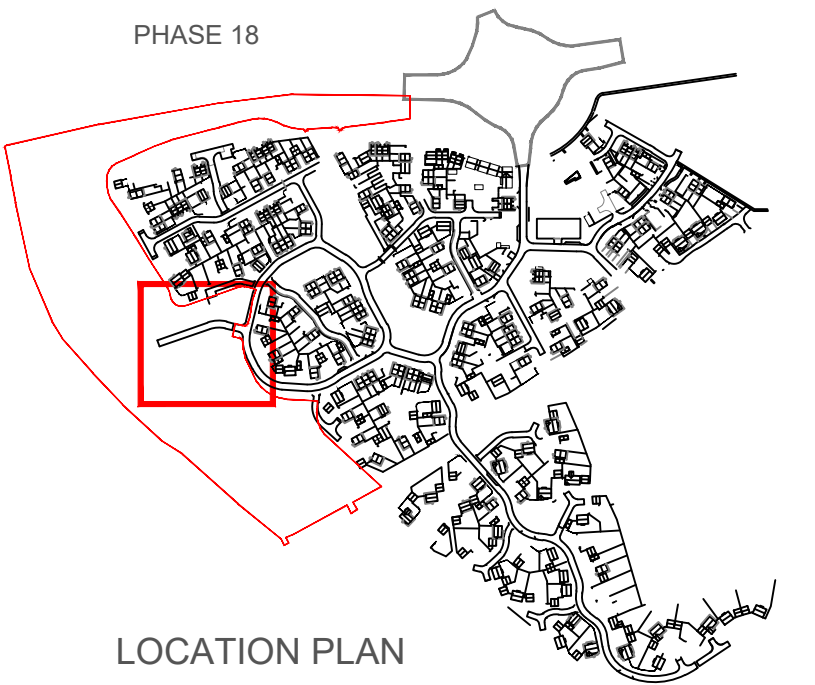
Refer to Engineers details for Asphalt road construction and asphalt footpath construction associated with access road and road levels

Contractor to provide Method Statement in relation to working under High Voltage power lines, in accordance with HSE GuidanceGS6 ' Avoidance of Danger from overhead electric power lines'
<https://www.hse.gov.uk/pubns/gs6.pdf>



Key:

- Softworks - Refer to detailed Phase 18 planting plans for full details
- Existing individual trees to be retained (Including Root Protection Areas)
 - Existing tree belt and hedgerow to be retained
 - Proposed Woodland - Tree and Shrub planting
 - Proposed small trees
 - Proposed feature parkland trees
 - Proposed shrubs
 - Proposed Amenity grass - Amenity Grass Seed mix to be PM120 Slowgrows[®] mix by DLF UK. (Refer to Tim O'Hare Associates drawing for specification of seed mix for sports pitches)
- Hardworks
- Proposed car park access road - Asphalt with concrete flat topped edging (refer to engineers drawing and specifications for details)
 - Proposed footpath associated with access road - Asphalt with concrete flat topped edging (refer to engineers drawing and specifications for details)
 - Proposed parking bays - Terram Bodpave 85 plastic paver filled with 14mm Golden Gravel (Corn) stonewarehouse.com or similar with concrete flat topped edging and plastic demarcation inserts. With concrete flat topped edging, 50x200mm
 - Proposed concrete paving slabs 600x600x50mm Tobermore Textured slabs, colour: Natural with concrete flat topped edging, 50x200mm
 - Proposed Tar Spray and chip footpath (Refer to details)
 - Proposed Breedon Gravel footpath route, 1.8m wide with a timber edge. Timber 38x150mm Tanalised timber.
 - Proposed granite sett threshold, consisting of 3 rows at junction between of 100x100x100mm granite setts laid straight bond.
 - Proposed BMX track - 0.4mm Crushed granite surface Colour: Grey (no edging)
 - Proposed Concrete edge - Marshalls Flat Topped Edging 200x50x14mm of similar approved
 - Car Park Barrier with height restriction to car park (1no.). Heavy duty, height limitation that allows through access only to intended vehicles i.e. cars, is lockable for total vehicle restriction but height restriction can be opened/unlocked for access of authorised vehicles e.g. coaches. PS8 Height Restriction Barrier by DRB Safety Barriers[®] Tel 01782 836080 or similar approved Hollow metal sections, fully welded, sunken posts for installation, max height as required. Latch Back post for lower gate and upper gate when in open position. In Yellow high viz as approved. Stop sign on closed gate, 6m wide.
 - Timber bollards - Langley Design Sheldon Bollard SBD300 0.9m high - 145x145mm square with chamfer top with reflective banding. (treated redwood) Accessible bay signage to be added where noted
 - Timber bollards - Langley Design removable bollards ref: Sheldon SBD301, 0.9m high - 145x145mm square with chamfer top with reflective banding. (treated redwood) for maintenance access.
 - Proposed Ascott Timber Knee Rail - 0.6m high



Rev A: Updated to show changes to car parking	DB	08-07-2024
Revision	By	Date



Project	St Giles Park, Cringleford
Drawing	Phase 18 Sports Pavilion Access Road and Car Park Proposals
Status	Tender
Job No.	B18079
Orig. No.	125A
Scale	1:200@A1
Drawn	DT
Checked	PW
Date	13.08.2020
North	

Do not scale off drawing. All dimensions & Levels are to be checked on site. Any discrepancies must be reported to the landscape architect immediately.
Copyright THE LANDSCAPE PARTNERSHIP LTD