

AMED LED

Product Specification



+44 (0)1747 858100

dextragroup.co.uk/dextra-lighting

Dextra
LIGHTING



INTRODUCTION

Introduction

The Dextra AMED LED range is now available in an LED variant using the latest Lumileds LEDs allowing us to offer a range of functions unique to ourselves. With 1500 or 2000 lumen output and light output ratios in excess of 80% this product range gives similar performance to traditional fluorescent sources. 1500 lumen offers similar output to 28W 2D and the 2000 lumen variant gives similar output to 38W 2D with the benefit of significantly lower energy consumption and a 5 year warranty (terms and conditions apply, please see our warranty page for full details).

The Amenity Decorative can be offered with optional integral sensor, emergency, corridor mode or dimming options, all of which can be combined to tailor the luminaire to suit your application.

The Amenity Decorative is manufactured from injection moulded polycarbonate with an opal diffuser and comes with a range of optional coloured ring attachments and semi recessing kits.

The Amenity Decorative is ideal for internal applications such as corridors, stairways, toilets and storage areas.

APPLICATION

- Canteen
- Commercial/Offices
- Corridor
- Education

- Healthcare/Social Housing
- Hotel/Leisure
- Industrial/Manufacturing
- Retail
- Stairwell
- Store Room
- Toilet
- Transport
- Warehouse/Storage

SPECIFICATION

Construction

- Polycarbonate diffuser and body.
- Steel gear tray powder painted white.

Performance

- Up to 87 luminaire lumens per circuit watt.

Control

- Available with Switch dimming, DALI dimming, HFR 1-10v Analogue dimming and Digital dimming.

Emergency

- Available with standard, self test and autotest dimming.

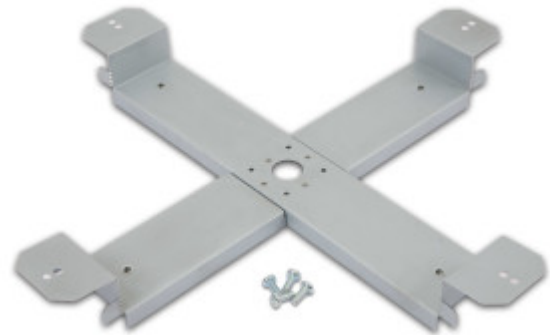
Installation

- Suitable for side conduit entry or rear cable entry.

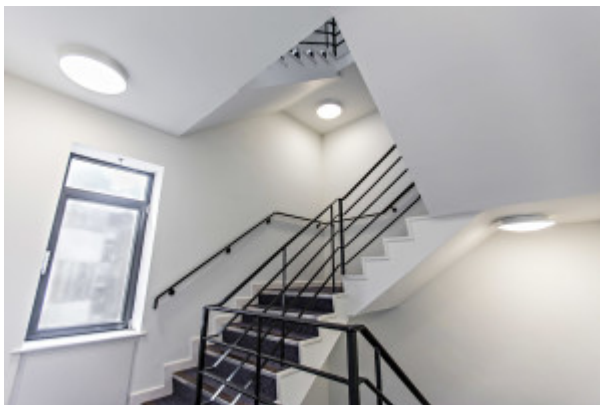
IMAGES

Product Images

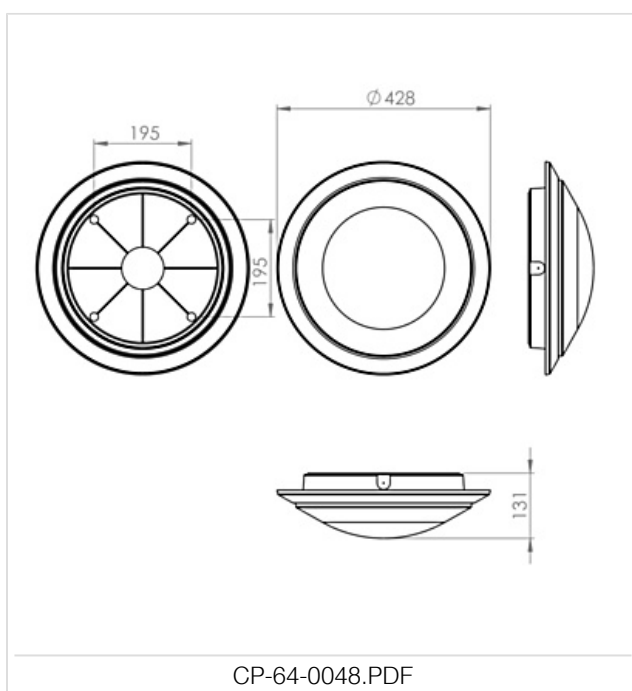




Project Images



TECHNICAL



WARRANTY

All Dextra products are supplied with a 12 month warranty for any defect that may occur with the product during this time. Any defect will either be repaired on site free of charge or the defective product may be replaced on a chargeable basis and credit given against defective product returned. The course of action taken will be at our discretion and dependent on the nature of the defect.

The control gear within our high frequency and LED luminaires is further underwritten by our suppliers for a period of up to 5 years in total from the time of purchase. This comprises labour and parts for the first 3 years and free of charge components only for the final 2 years.

PROTEC LED FR 8W GU10 variants and Emergency LED ranges are exempt from the 5 year warranty and are supplied with 1 year warranty only. PROTEC LED COB luminaires are supplied with a two year warranty for replacement luminaires only.

All warranties are subject to correct use of the product and will be invalidated by misuse, for example incorrect installation or unsuitable environmental conditions.

It is the duty of the customer to ensure that all relevant tests have been carried out prior to requesting site visits or replacement products, for example replacement of lamps, commissioning of sensors and inspection of external wiring. In the event that no defect is found with the product our costs for attending site will be recharged to the customer and credit will not be issued against returned products.

No consequential losses incurred resulting from any defect with our product will be reimbursed.

Consumable commodities such as lamps, starters and batteries are excluded from these warranty terms. Batteries are supplied with a twelve month warranty only.

5 year warranty on LED product ranges is subject to a maximum of 4000 operating hours per year and only applies where failures exceed the component manufacturers expected failure rate and lumen depreciation.

If you require any assistance with regards to our products please do not hesitate to contact our Customer Services department on 01747 858100.

ORDER CODES

Luminaire Codes

Code	Description	Circuit Wattages	Llm/w
AMED L15 C84	Amenity Decorative, 1500 Lumen, White Opal, Colour 84	13.4w	88
AMED L20 C84	Amenity Decorative, 2000 Lumen, White Opal, Colour 84	19.4w	81
AMED L30 C84	Amenity Decorative, 3000 Lumen, White Opal, Colour 84	21.5w	110

C83 option available on special request with specific lumen outputs.

Optic

Code	Description
AMED SRB	Amenity Decorative Semi Recessing Kit (330mm cut out)
AMED AWR	Amenity Decorative Angled White Ring
AMED ACR	Amenity Decorative Angled Chrome Ring
AMED ABR	Amenity Decorative Angled Brass Ring

Dimming & Control Gear

Code	Description
S	Switch Dimming
A	Digital Addressable Lighting Interface (DALI)
D	Digital dimming (DSI)
C	Bi-Level Dimming

Lighting Control

Code	Description
R25E	R25 On/Off (Microwave Presence / Brightout Sensor – High Frequency)
R25C*	Reacta 25, Corridor Mode (Microwave Presence / Brightout Sensor)

*Bi-Level Dimming.

*Will only dim the luminaire to 10% during absence and brightout, it will not turn the luminaire off.

Emergency

Code	Description
M3	Maintained Emergency 3 Hour
ST3	Self Test
AT3	Autotest Emergency