



AIR CONDITIONING PROBLEM AND DIAGNOSIS

Tuesday, 30 June 2020

7 Issues Identified



LOWER DECK SW PUMP DETAILS

Pump is working correctly but in poor condition and quite rusty would recommend replacement for long term reliability.



UPPER DECK SW PUMP DETAILS

This pump has been replaced but external influences has also prematurely aged this pump

The inlet of this pump had a small air leak which although not a big one could have long term issues of pump taking in air.



UPPER DECK PUMP DETAILS.

This Pump has a date on showing replacement with a non Dometic pump manufactured in 2018.



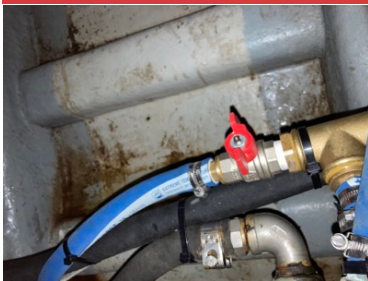
ONE WAY VALVE.

This one way valve on skin fitting wasn't functioning correctly removed and 'freed' up in workshop and replaced



ONE WAY VALVE AND BLEED COCK ARRANGEMENT.

Additional one way valve and bleed cock arrangement fitted to the outlet of pump.



NEW BLEED COCK FITTED BEFORE THE ONE WAY VALVE

Fitted bleed cock to facilitate easy bleeding of the pump should bleeding fault occur in future that has not been rectified by the additional non return valve

DRAIN FROM AIR HANDLING UNIT.

After having the air handling unit on upper deck successfully working for several hours the condensation tray started to over fill.

Rectified by re routing the drain pipe to prevent kinking.