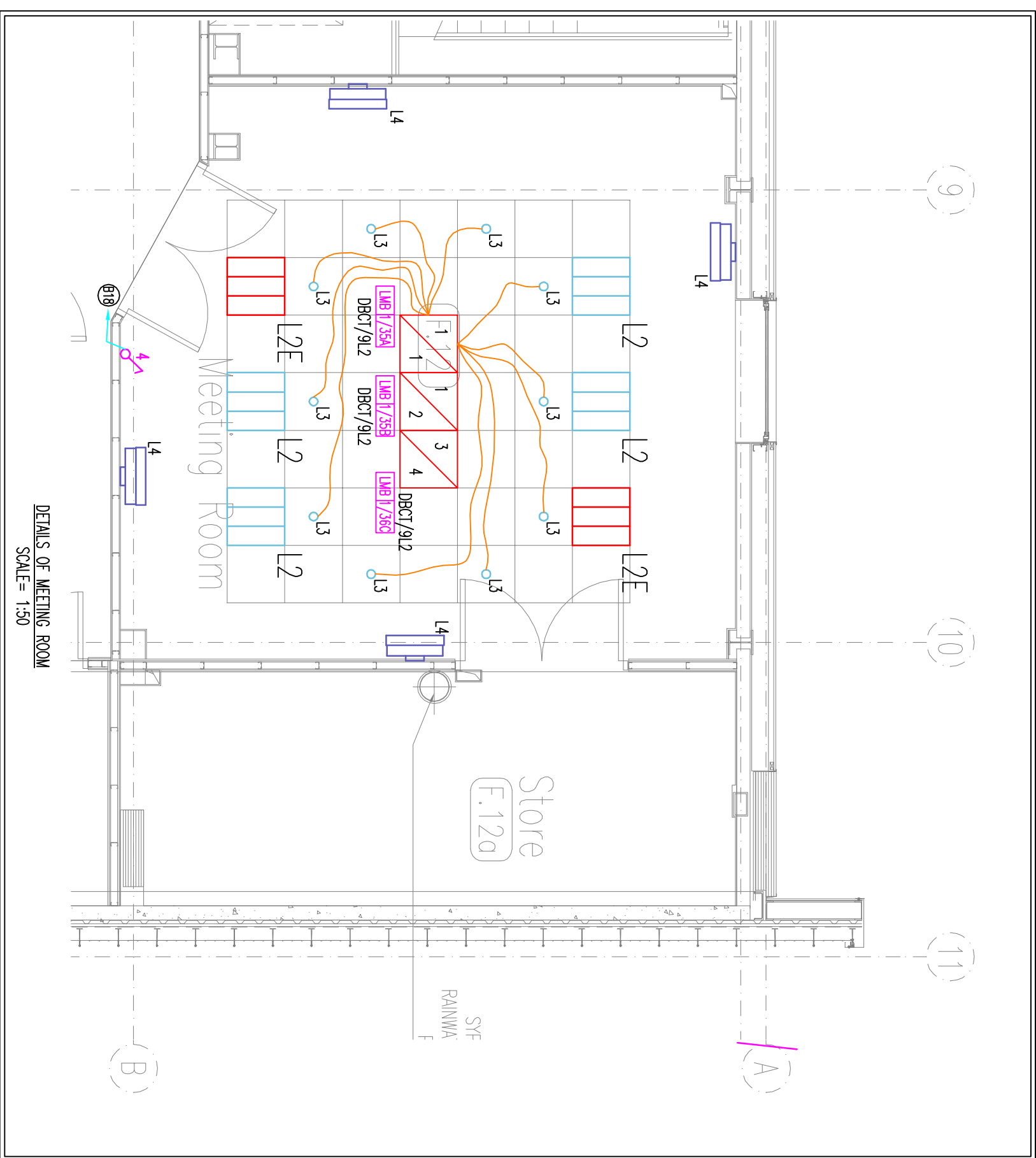
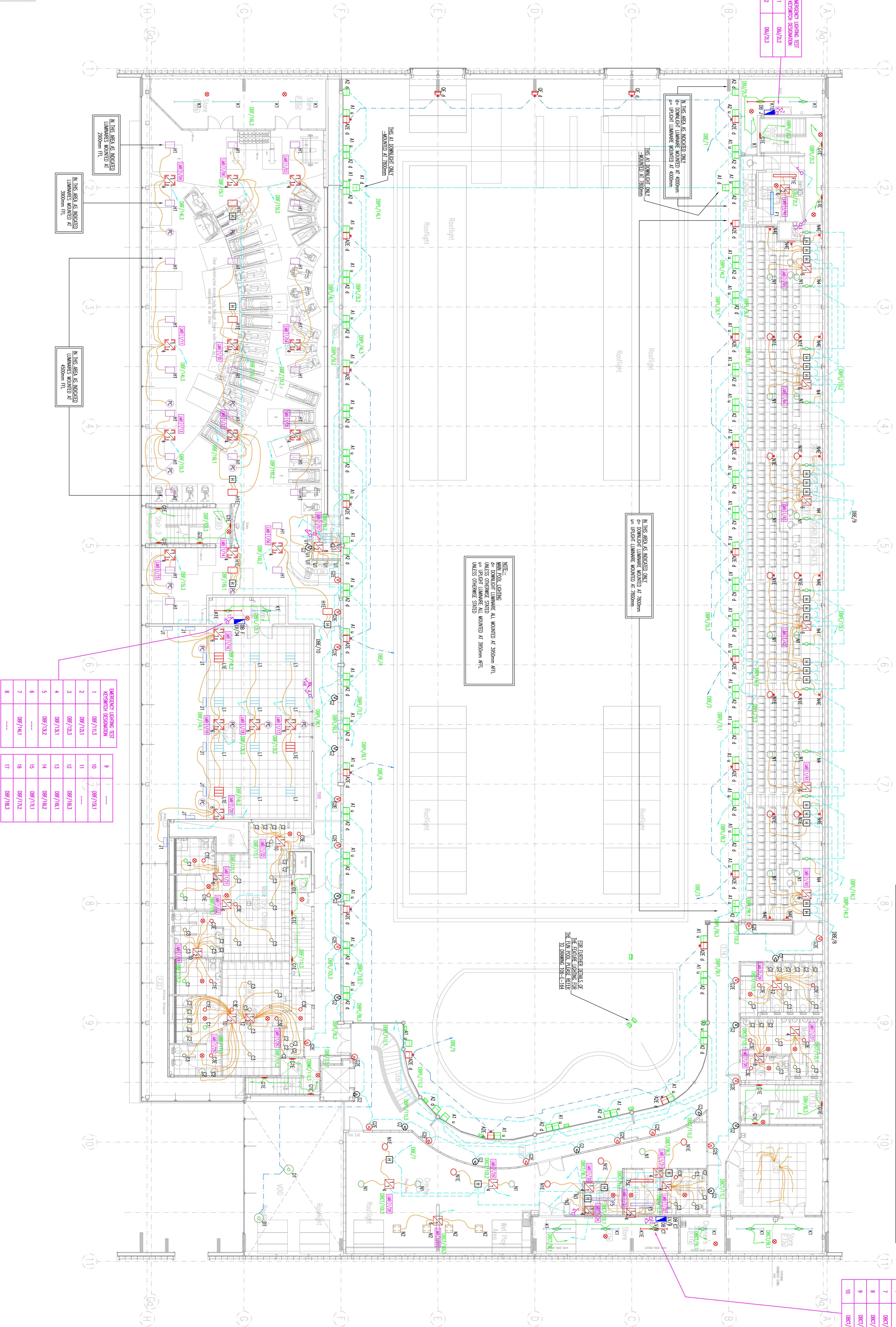


- Notes:**
1. DO NOT SCALE THIS DRAWING.
 2. DO NOT ALTER BY HAND.
 3. THIS DRAWING IS TO BE READ IN CONJUNCTION WITH ALL OTHER RELEVANT DRAWINGS AND SPECIFICATIONS.
 4. ALL DIMENSIONS ARE IN MILLIMETRES UNLESS OTHERWISE STATED.

[illegible]

DEPENDENCY LEARNING TEST KATSWICH DEBATION	
1	08c7/84.1
2	08c7/84.2
3	08c7/94.3
4	08c7/104.4
5	08c7/104.2
6	08c7/104.1
7	08c7/114.1
8	08c7/114.2
9	08c7/114.3
10	08c7/124.1

EMERGENCY LIGHTING TEST KEYSWITCH DESIGNATION	
1	DBL/2L2
2	DBL/2L3



1. LIGHTING CONTROLLED IN ACCORDANCE WITH LIGHTING CONTROL, PHOTOPHYLL AND STIMULANT PARAMETERS.
2. FOR LUMINARE OPERATIONS REFER TO THE LUMINARE SPECIFICATIONS ON DRAWING NO. 106-0-171.
3. PLANT ROW LUMINARE POSITIONS MAY BE ADJUSTED TO SUIT ACTUAL PLANT SPACING.
4. FIELDS FROM UNWASHING ROSES TO LUMINARES CLIPPED DISCRETELY TO BUILDUP STRUCTURE.
5. ACCESS HIGHWAYS ARE PROVIDED TO LAND AS REQUIRED.
6. ALL ENERGY TEST ARE CONDUCTED FOR SOIL CONTAMINANTS ARE LOCATED AT THE DISTRIBUTION POINTS, SEPARATING THE LIGHTING.

PLEASE REFER TO DRAWING 106-2-061 FOR DETAILS OF MOUNTING HEIGHTS.

TRANSMITTER LIGHTING

SMITH REFERENCE CONTROLLING COI

[illegible]

EMERGENCY LIGHTING

LINNAPURE MACHINING BOX
IDENTIFICATION NUMBER
[UG 1/01]

WITH DISTAL DIMMING
NO. DENOTES NUMBER OF WAYS

No. DENOTES NUMBER OF WAYS

SWITCH/CONTROL LINES

CONTROL SCHEMATIC DRAWINGS
SWITCHED AS INDICATED ON LIGHTING
--- --

DINNER SWITCH KID: 050205

INTERMEDIATE LIGHT SWITCH W/

2 WAY MANUAL LIGHT SWITCH MK

(n DENOTES NUMBER OF GAMES)

EX-UR WP200007