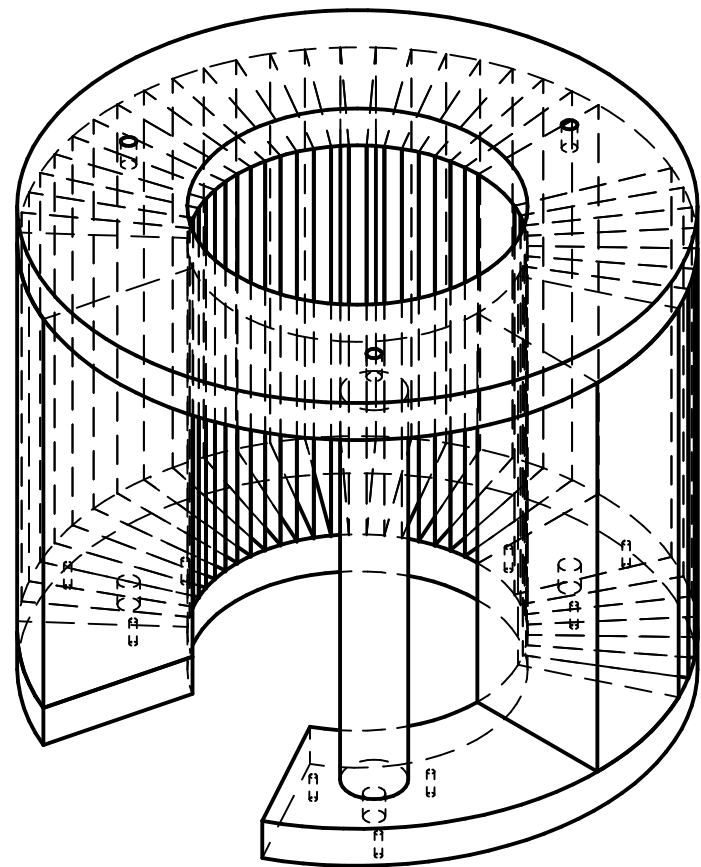
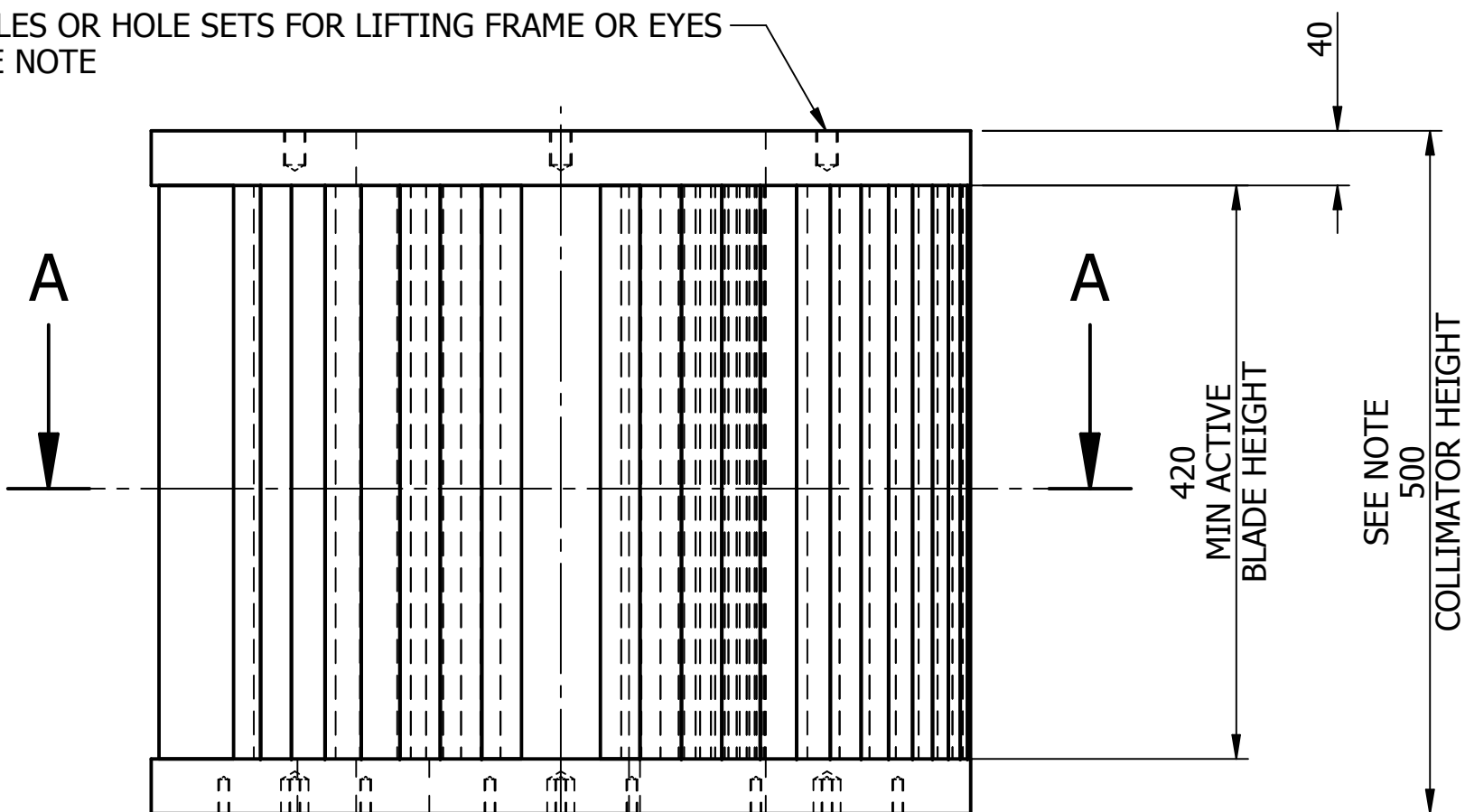


A1 SI-2553-914

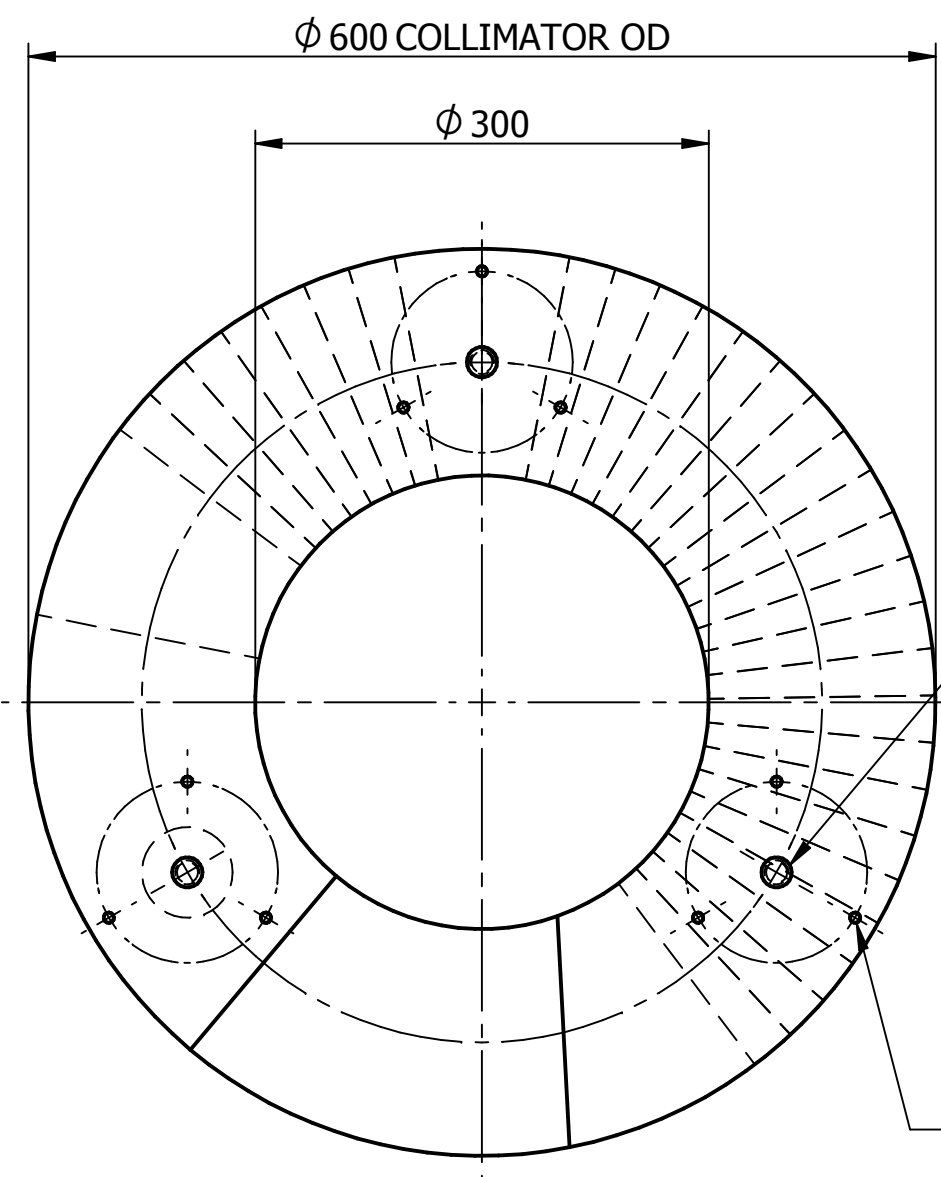
B

DO NOT SCALE

HOLES OR HOLE SETS FOR LIFTING FRAME OR EYES  
SEE NOTE



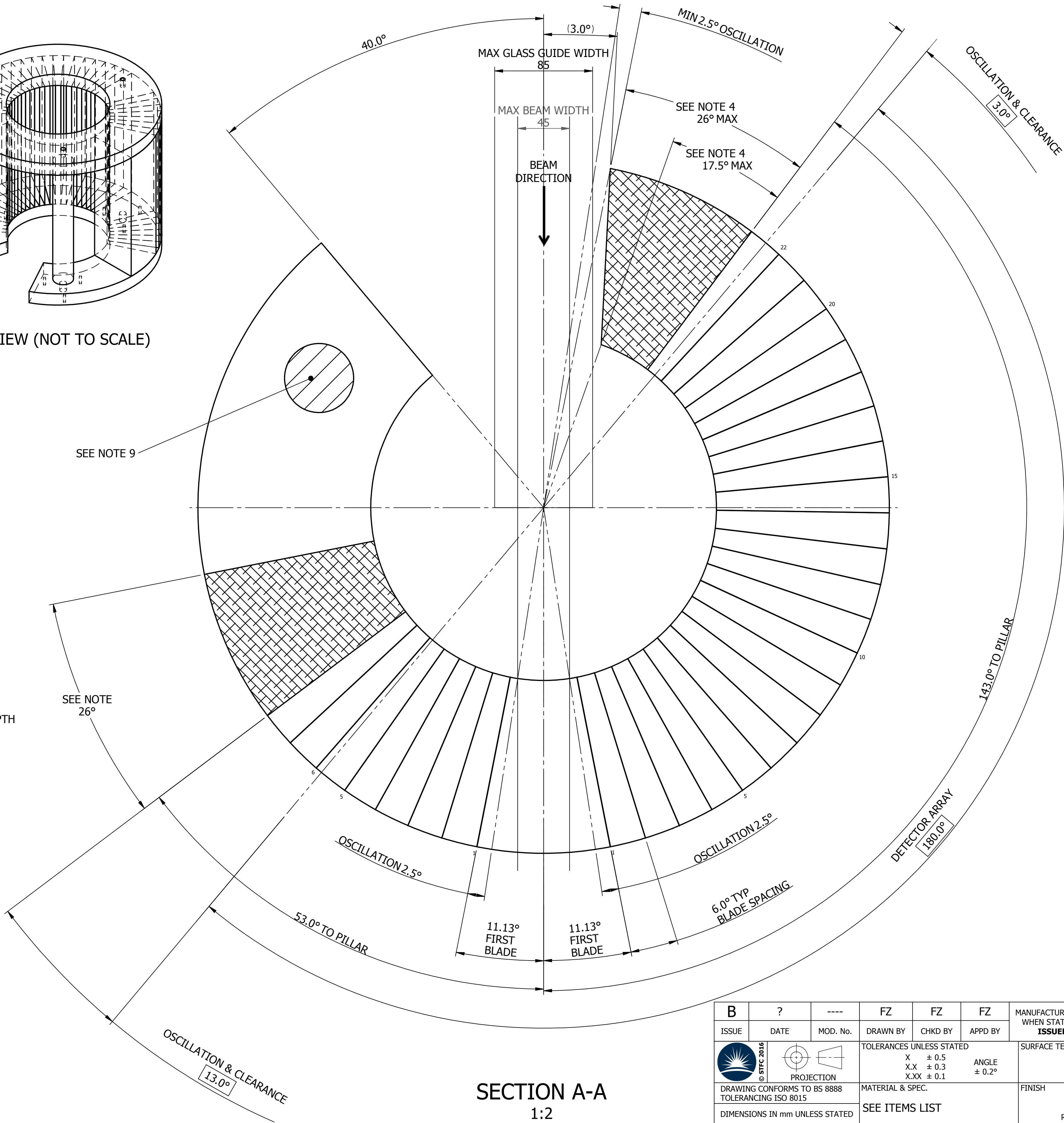
3D VIEW (NOT TO SCALE)




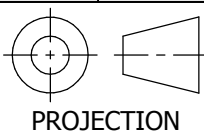

VIEW ON BASE FIXINGS  
SCALE 1:5

NOTES:~

1. THESE SHEETS ARE ONLY TO PROVIDE OVERALL DIMENSIONS AND MAJOR SPECIFICATION ITEMS FOR QUOTATION ONLY. DETAIL, MANUFACTURE AND ASSY METHOD IS UP TO THE DISCRETION OF THE SUPPLIER BUT MUST BE AGREED UPON WITH STFC BEFORE FINALISING THE DESIGN (REFER TO TE SPEC DOCUMENT).
2. GADOLINIUM OXIDE COATING TO BE APPLIED ALL OVER - TO INCLUDE ALL BLADES, ALL SURFACES OF THE MOUNTING CARTRIDGES, TOP AND BOTTOM RINGS AND PILLARS
3. ALL ANGLES TO  $\pm 0.05^\circ$
4. PILLAR SIZES & DESIGN TO BE ADVISED BY MANUFACTURER. SPECIFIED MAXIMUM IS TO PREVENT PILLAR ENTERING BEAM PATH OR CLASHING WITH GLASS GUIDE (WITH OSCILLATION TAKEN INTO ACCOUNT)
5. MAX BLADE THICKNESS 0.1
6. COLLIMATOR HEIGHT SPECIFIED IS FOR GUIDANCE PURPOSES. SUPPLIER TO PROPOSE THE MINIMUM HEIGHT REQUIRED TO PROVIDE GIVEN ACTIVE BLADE HEIGHT, BLADE SUPPORT AND APPROPRIATELY THICK TOP AND BOTTOM RINGS.
7. LIFTING EQUIPMENT OR EYES ARE UP TO THE DISCRETION OF THE SUPPLIER, TO BE CONFIRMED WITH STFC BEFORE FINALISING THE DESIGN. ANY LIFTING EQUIPMENT DESIGNED TO BE PERMANENTLY ATTACHED TO THE COLLIMATOR MUST LIE WITHIN THE SIZE ENVELOPE AS DEFINED BY "COLLIMATOR HEIGHT" AND "COLLIMATOR OD".
8. TO BE MANUFACTURED FOR USE IN VACUUM AND MAGNETIC ENVIRONMENT. NON-MAGNETIC MATERIALS TO BE USED WHEREVER POSSIBLE.
9. ANOTHER PILLAR OR TIE BAR MAY BE ADDED IN THIS AREA TO SUPPORT THE BROKEN BASE PLATE



SECTION A-A  
1:2

B	?	----	FZ	FZ	FZ	MANUFACTURE ONLY WHEN STATUS IS <b>ISSUED</b>	<b>ISSUED</b>
ISSUE	DATE	MOD. No.	DRAWN BY	CHKD BY	APPD BY		STATUS
			TOLERANCES UNLESS STATED			SURFACE TEXTURE UNLESS STATED	
			X ± 0.5 X.X ± 0.3 X.XX ± 0.1			ANGLE ± 0.2°  Ra 3.2	
DRAWING CONFORMS TO BS 8888 TOLERANCING ISO 8015			MATERIAL & SPEC.			FINISH	
DIMENSIONS IN mm UNLESS STATED			SEE ITEMS LIST			CLEAN REMOVE ALL BURRS	
ISIS DESIGN DIVISION   USED ON ----							
RUTHERFORD APPLETON LABORATORY, HARWELL CAMPUS, DIDCOT, OXFORDSHIRE, OX11 0QX							
TITLE							
COLLIMATOR SPEC							
ISIS - TS1 MERLIN							
A1	SHEET	1 OF 1	SI-2553-914				B