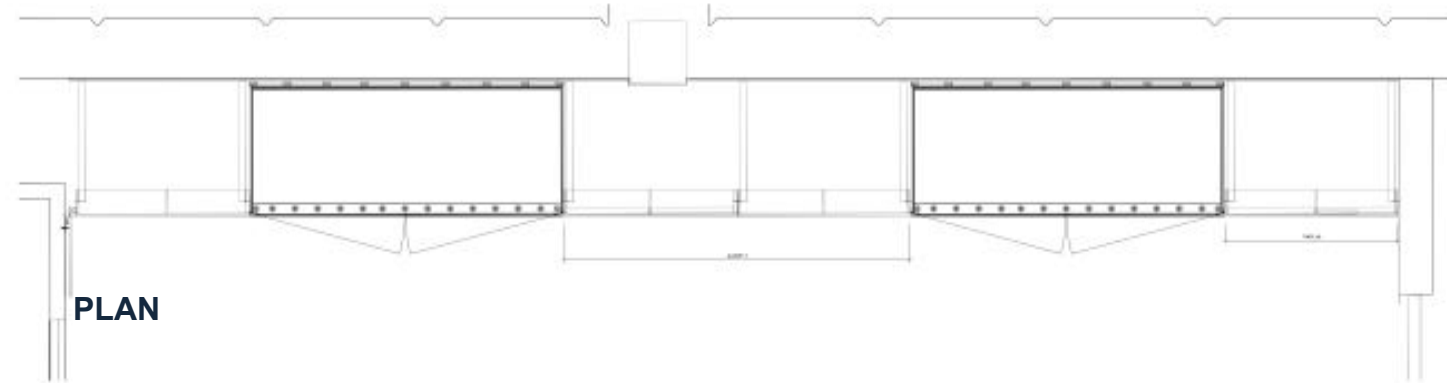
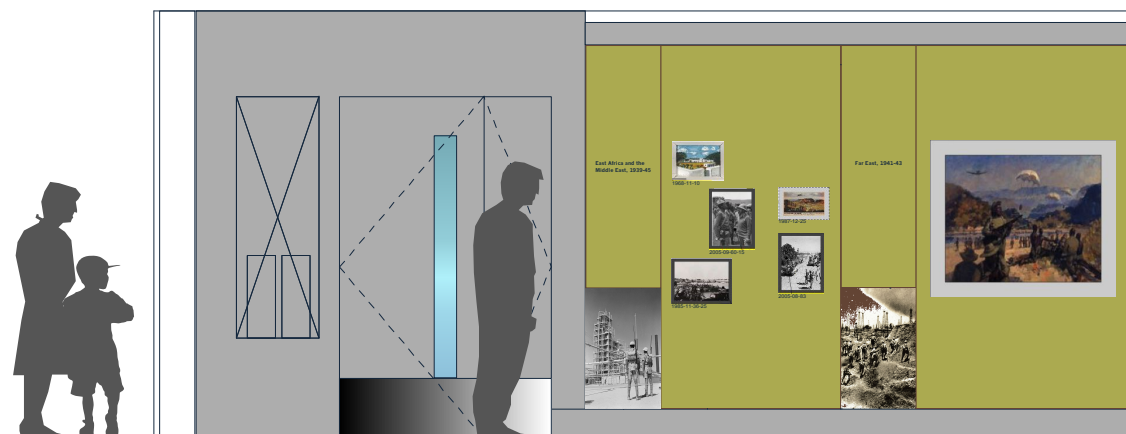


PLAN



PLAN

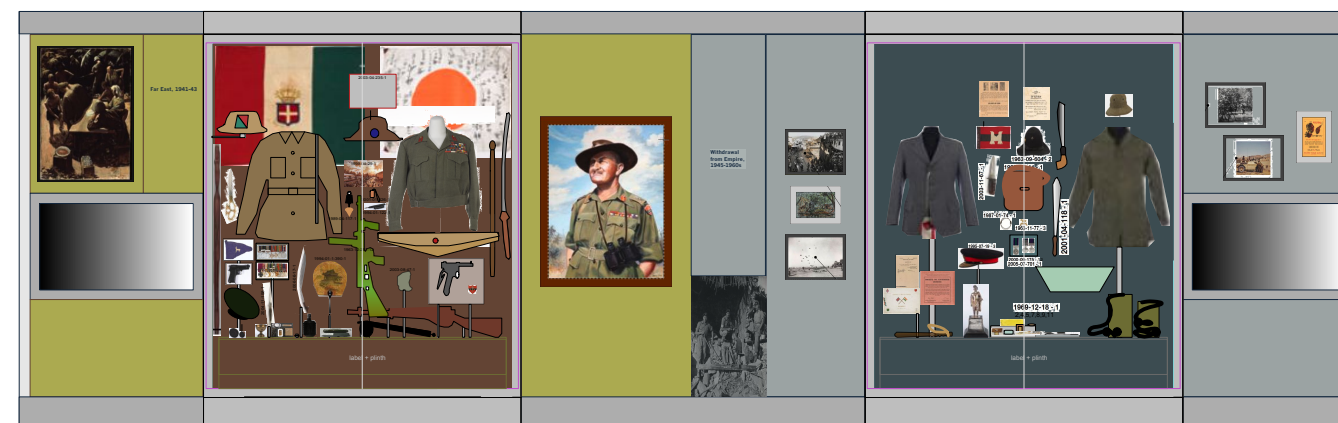


ELEVATION 6

**EAST AFRICA +
MIDDLE EAST,
1939-45**

FAR EAST, 1941-43

1991-07-138



1995-10-3-1

Case 13

1990-05-32-1

2007-04-43-4 / 2003-03-597-1 / 2007-12-6-110

Case 15

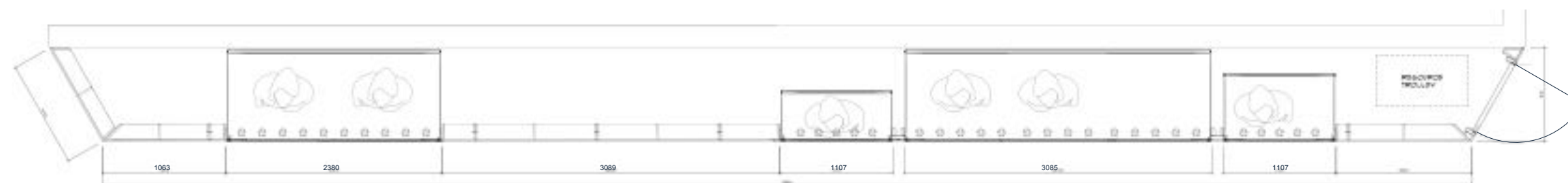
1992-11-145-22 / 1992-08-65-86 / 2001-04-514

EAST AFRICA + MIDDLE EAST AND THE FAR EAST, 1939-45

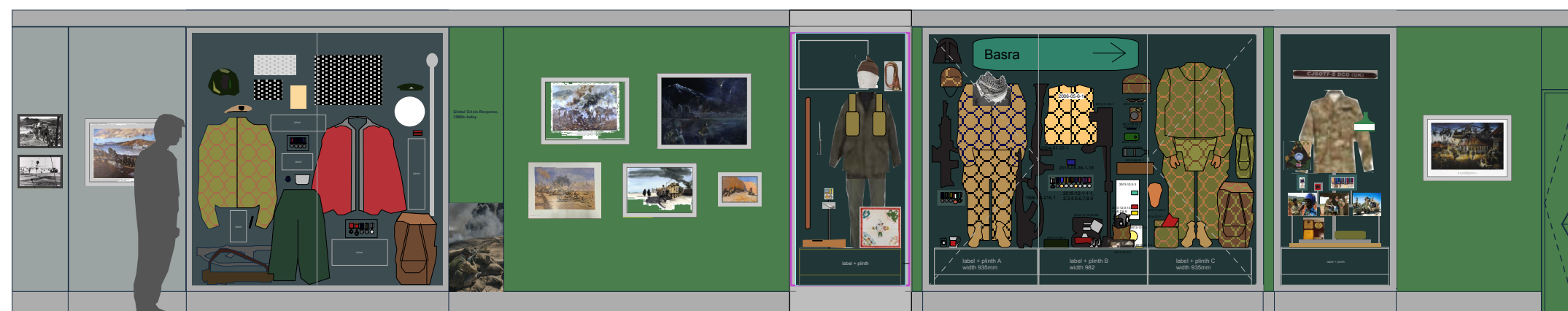
ELEVATION 7

DEFENCE OF EMPIRE

WITHDRAWAL FROM EMPIRE



PLAN



1996-06-157-146 / 1999-11-8-75

1984-11-41-1

Case 16

WITHDRAWAL FROM EMPIRE, 1950s-1997

1995-01-227-1 / 2003-04-238

2005-11-48

2003-07-87

2014-05-7

KOREAN WAR, 1950-53

Case 17

CRISIS RESPONSE, 1990-2014

Case 18

Case 19

CRISIS RESPONSE, GLOBAL ASSISTANCE, 1980s- today

2002-04-232

Access door retained

- Elevations 6, and half of 7 is painted yellow/green, to match RAL 100 70 50 / CMYK 9,10,65,25
- Elevations rhs of 7, and start of 8, is grey to match RAL 7040 / Pantone 442c
- Elevation 8 rhs of grey is dark green to match RAL 6037 / 71,35,67,14

WITHDRAWAL FROM EMPIRE

GLOBAL CRISIS RESPONSE

Rev A 23.11.21 Paintings positions changed, panel colours revised. Rev B 24.11.21 image on 4.1 changed. Rev C 2.12.21 Panel sizes + colours changed Rev D 12.1.22 Access door noted