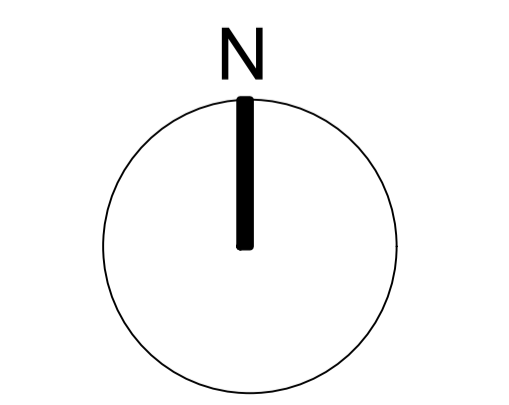
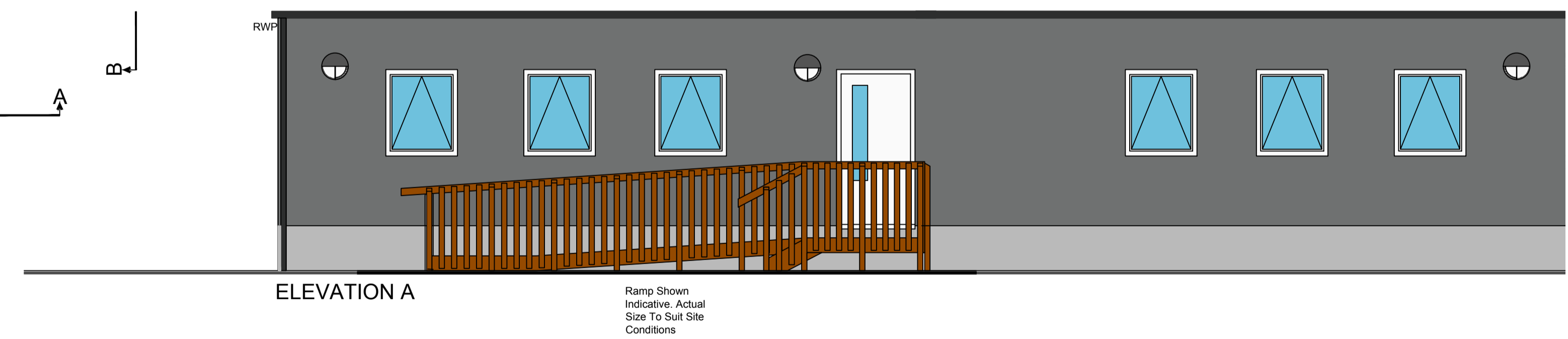
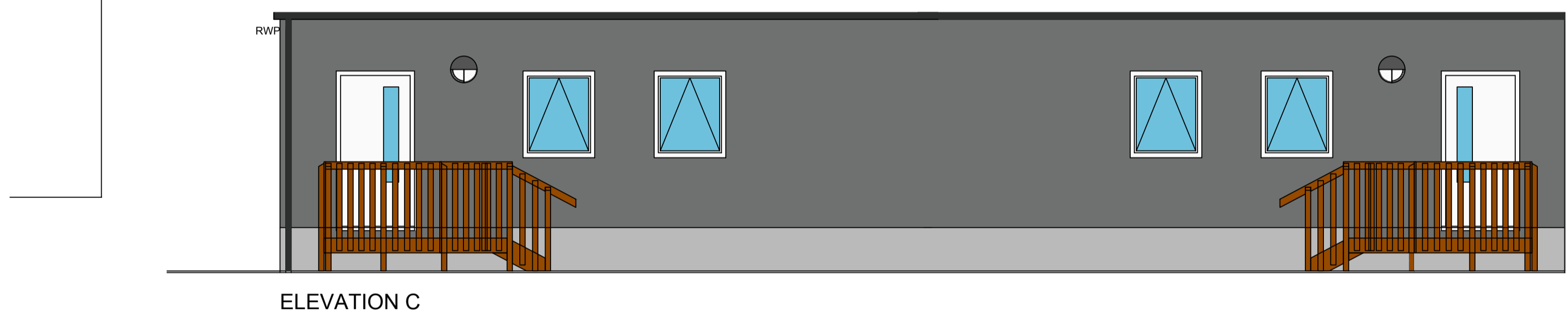
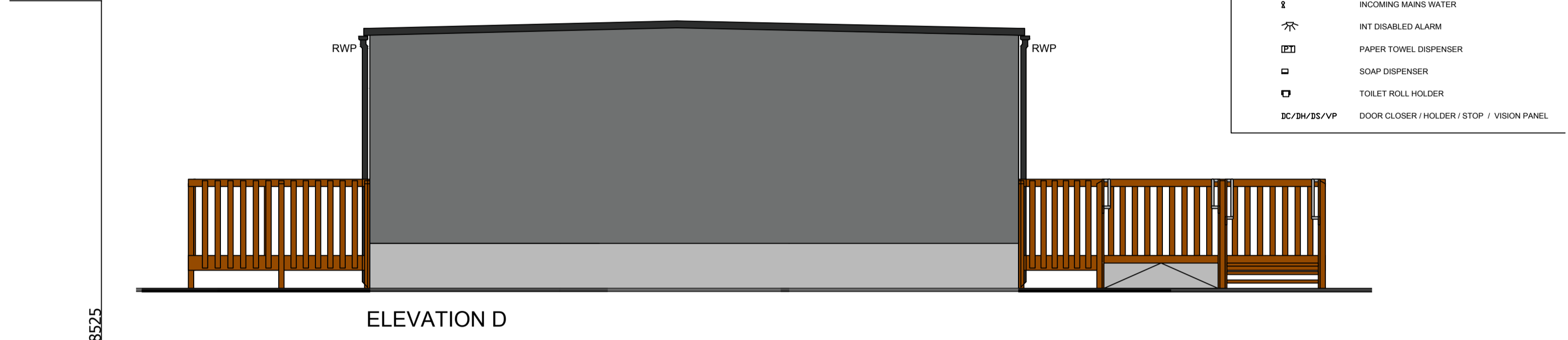
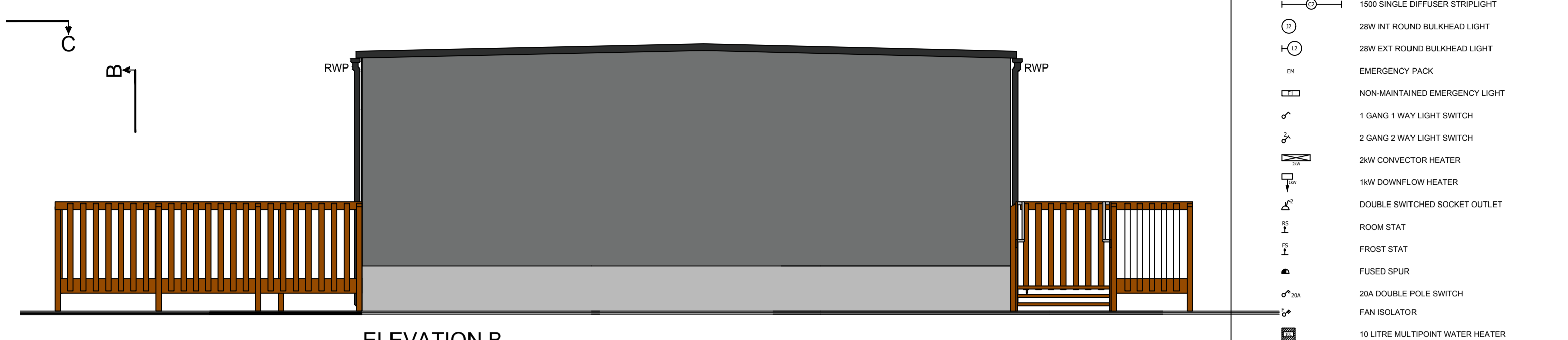
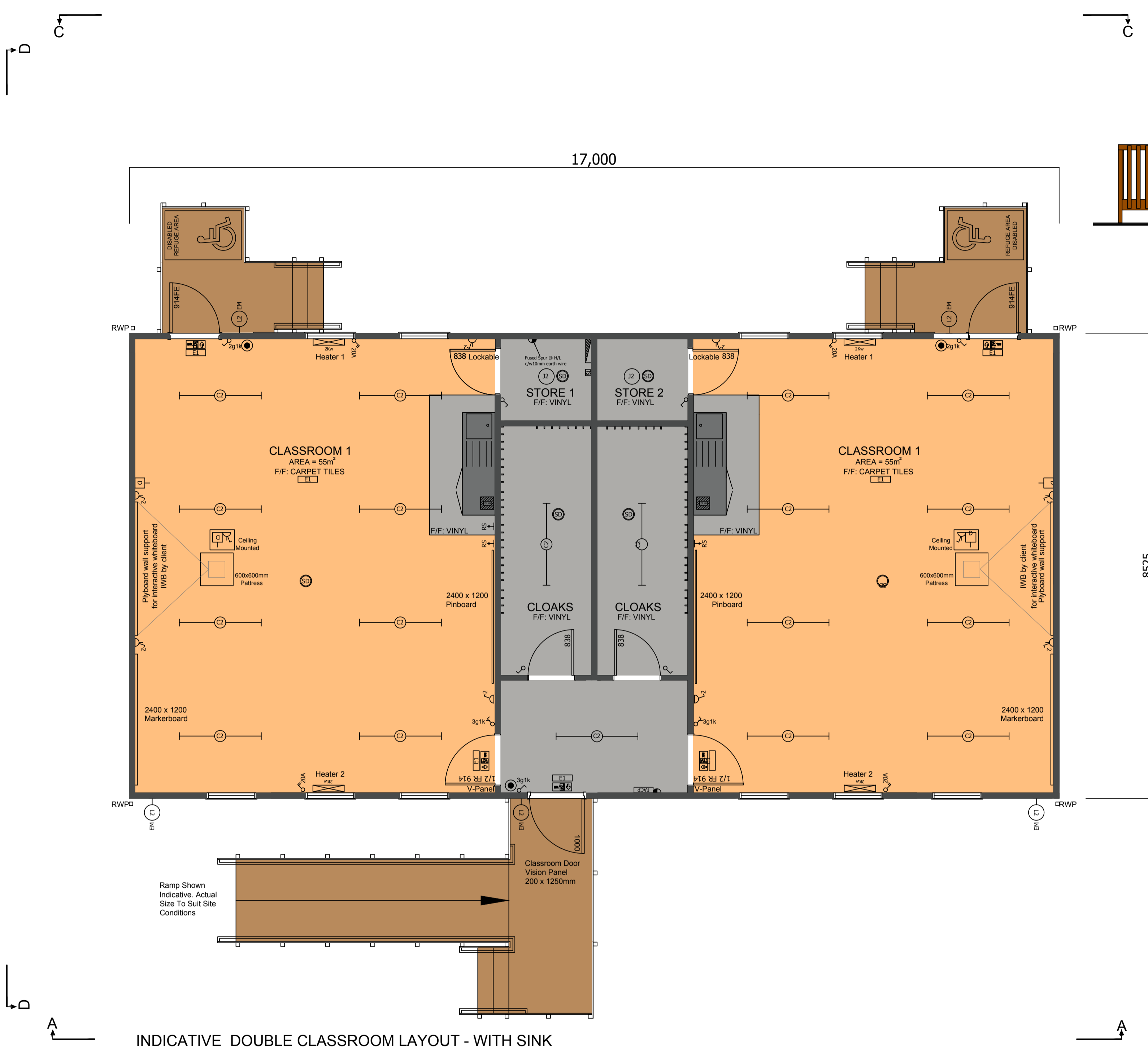
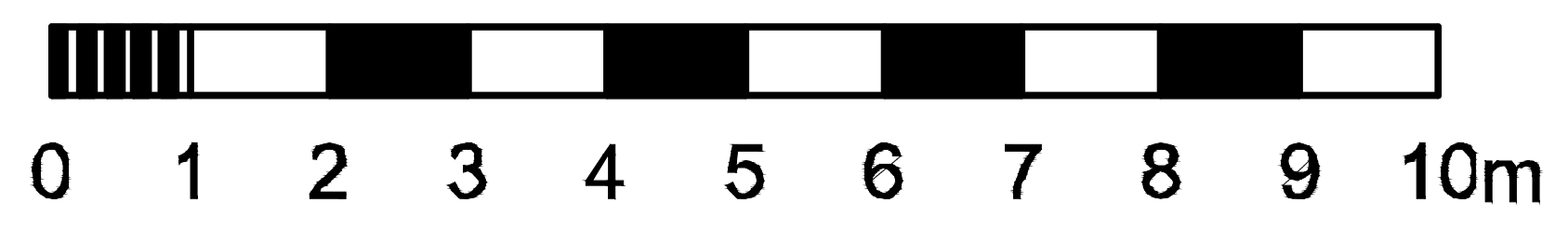


**LEGEND**

- 1500 SINGLE DIFFUSER STRIPLIGHT
- 28W INT ROUND BULKHEAD LIGHT
- 28W EXT ROUND BULKHEAD LIGHT
- EMERGENCY PACK
- NON-MAINTAINED EMERGENCY LIGHT
- 1 GANG 1 WAY LIGHT SWITCH
- 2 GANG 2 WAY LIGHT SWITCH
- 2kW CONVECTOR HEATER
- 1kW DOWNFLOW HEATER
- DOUBLE SWITCHED SOCKET OUTLET
- ROOM STAT
- FROST STAT
- FUSED SPUR
- 2SA DOUBLE POLE SWITCH
- FAN ISOLATOR
- 10 LITRE MULTIPUNT WATER HEATER
- DISTRIBUTION BOARD
- TIME SWITCH
- SINGLE DATA POINT
- CEILING MOUNTED EXTRACT FAN
- SOIL VENT PIPE
- INCOMING MAINS WATER
- INT DISABLED ALARM
- PAPER TOWEL DISPENSER
- SOAP DISPENSER
- TOILET ROLL HOLDER
- DC/BS/VP
- DOOR CLOSER / HOLDER / STOP / VISION PANEL



Overall GIFA: 140msq



**title**  
Indicative Double Classroom Layout  
With Sink

drawn: NH  
date: October 2018  
scale: 1/50 @A1  
plan no. DFE\_005