

Millbrook Parish Council

Grass cutting maps to support the tender specification

Recreation areas to include:

Sports and play facility areas

Recreation field

Lakeside verges (note: the roadside verges are under the management of Cornwall Council)

A section of Hounster Hill as you enter the village

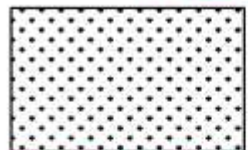
The junction of St Andrews Street and Hounster Drive

Please also refer to the images on the '[Council News](#)' tab of
Millbrook Parish Council's website

<https://millbrook-pc.gov.uk/grass-cutting-tender-from-2025-26-2026-27-2027-28/>

MILLBROOK LAKE AREA

PLAN 1



RETAIN AREAS OF LONG GRASS

Junior football field and tennis

AREA E

AREA D

AREA G

AREA C

Left uncut between April to December
apart from 1m margin each side of the tarmac

Grid reference
SX 42270 52433.

RETAIN LONG GRASS
IN ORCHARD

RETAIN LONG GRASS
BETWEEN PATH AND FENCE

FENCE

EXTEND LONG GRASS
BEYOND THE FENCE TO
BASE OF TREES

New Road

AREA B

AREA A

**Plan (1) -
Areas A & B**



The area outside the tractor park, where the flowerboat is situated is excluded from the Parish Council's grass cutting contract. It is maintained by Cormac on behalf of Cornwall Highways.

PLAN 1

Play Area

Path

Grid reference SX 42672

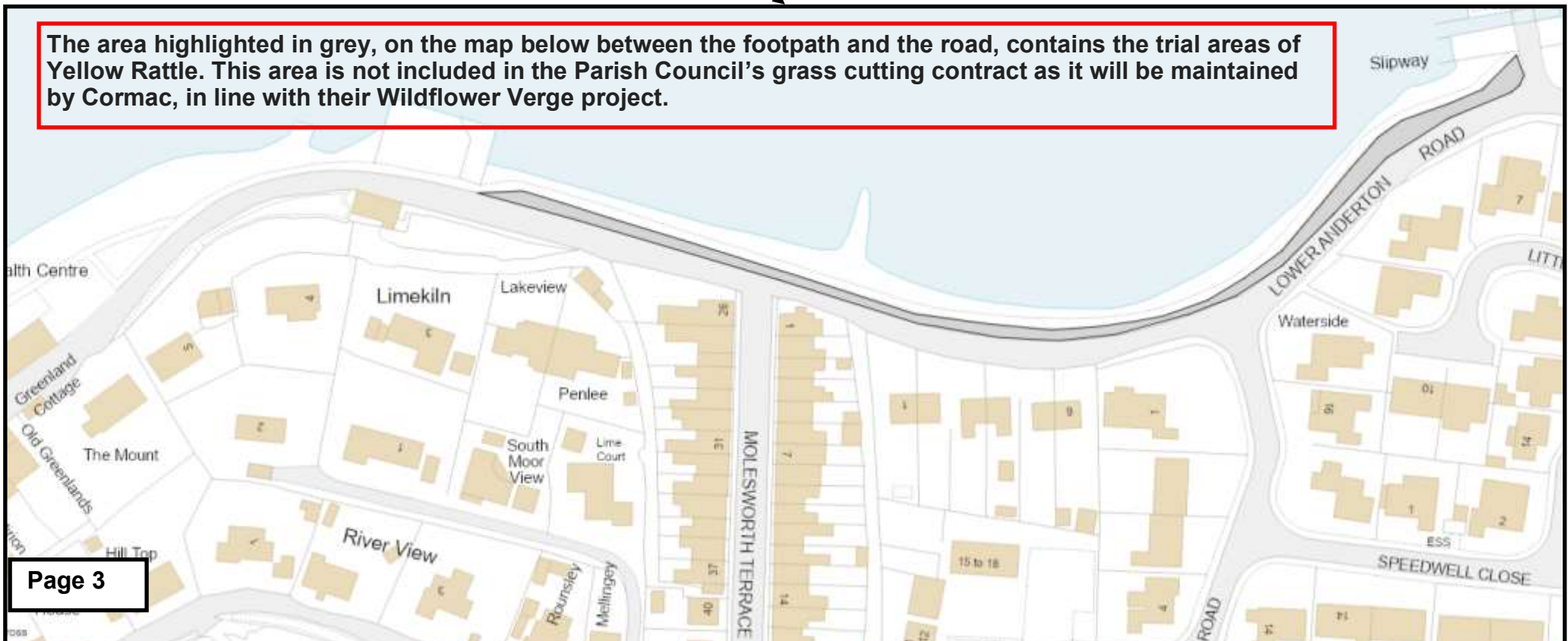
Skatepark

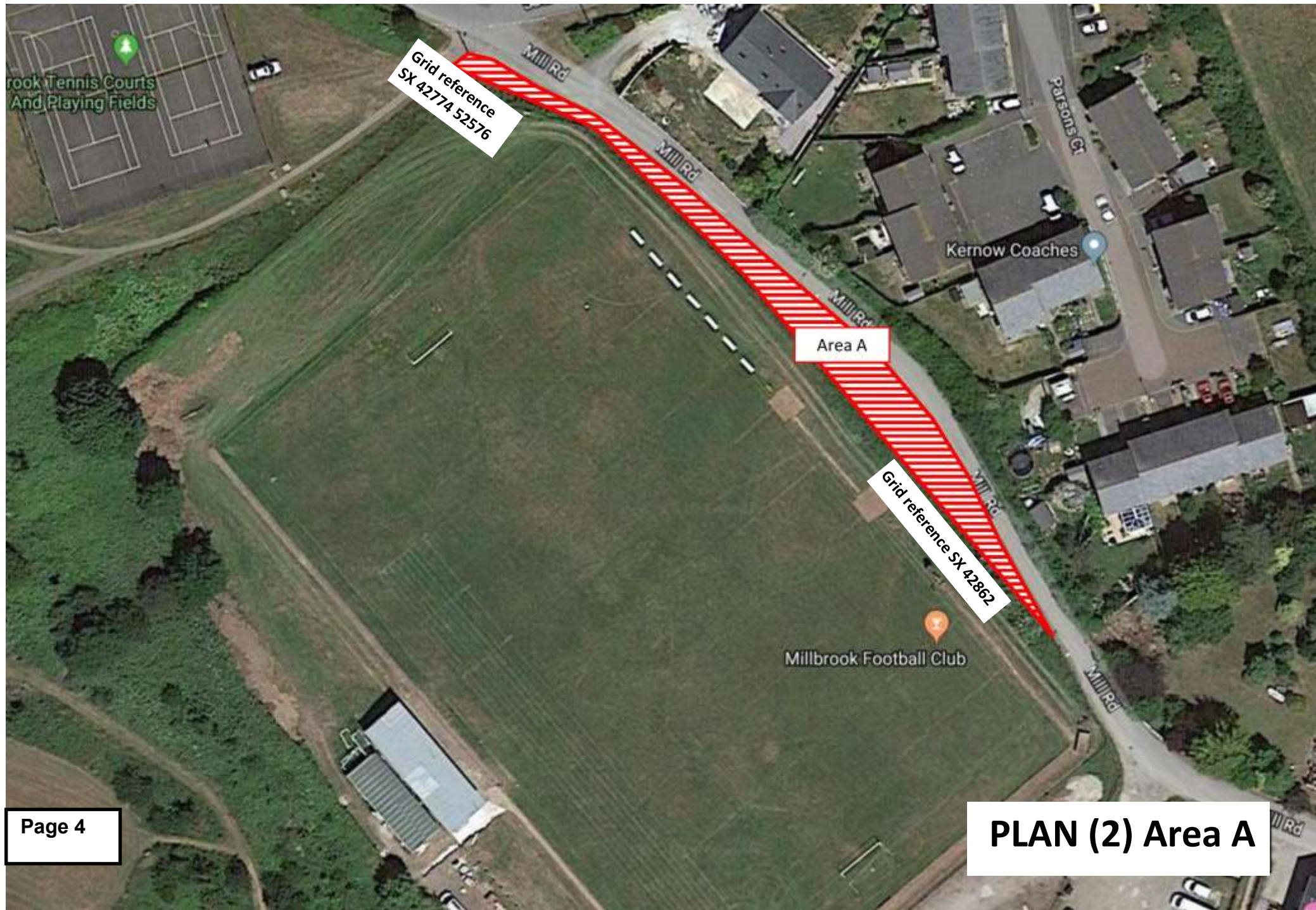
The grass surrounding the lakeside along Greenland / Lower Anderton Road is part of the Parish Council's Grass Cutting contract.

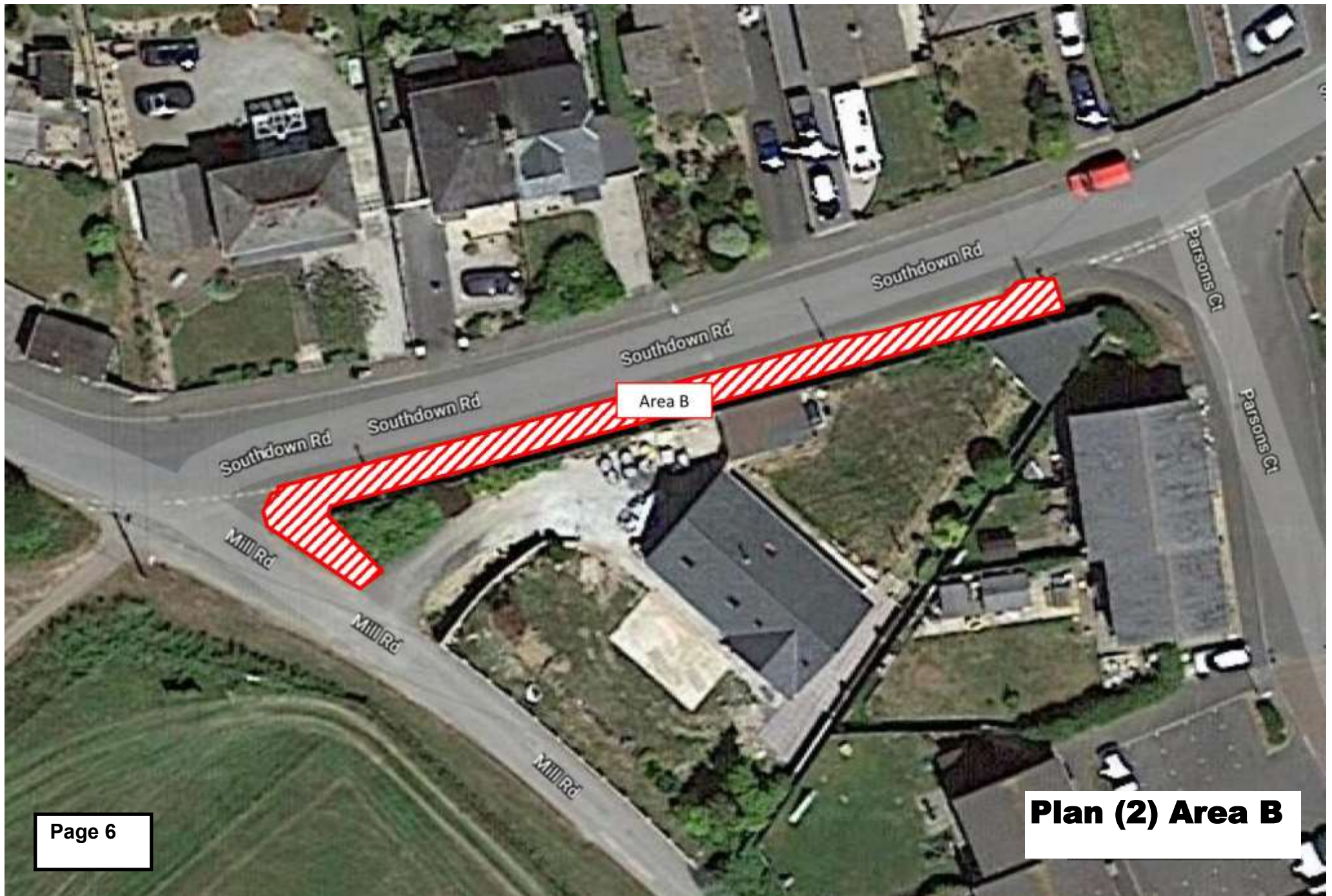
Plan 1 (Area G)



The area highlighted in grey, on the map below between the footpath and the road, contains the trial areas of Yellow Rattle. This area is not included in the Parish Council's grass cutting contract as it will be maintained by Cormac, in line with their Wildflower Verge project.







Plan (3) Areas 1 and 2

