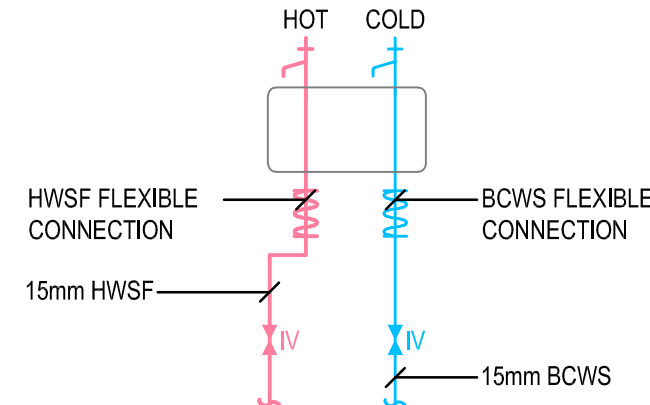
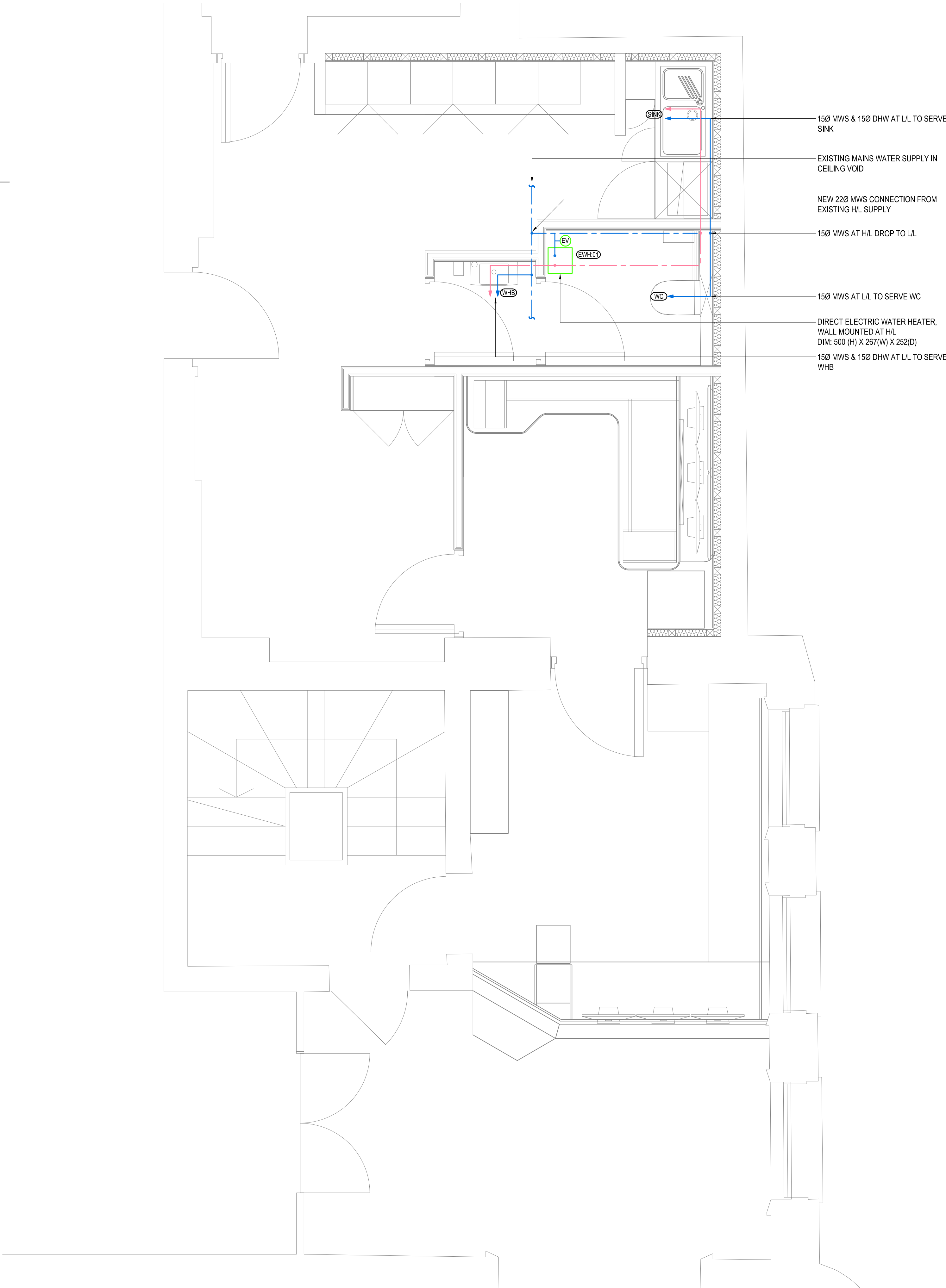


A | TYPICAL WHB CONNECTION DETAIL
SCALE: NTS



B | TYPICAL SINK CONNECTION DETAIL
SCALE: NTS

WATER HEATER SCHEDULE						
EQUIPMENT REF NO	HEATER TYPE	STORAGE TYPE	ELECTRICAL SUPPLY(V/Ph/Hz)	ELECTRICAL RATING (kW)	MAKE/MODEL	DIMENSION (mm)
EWH:01	DIRECT ELECTRIC	INSTANTA NEOUS	230/1/50	2.2	HEATRAE SADIA /HOTFLO 10	500 (H)x267(W) X252(D)



THIS DRAWING IS INDICATIVE AND REPRESENTS ONLY THE DESIGN INTENT. THE CONTRACTOR MUST PRODUCE FULLY CO-ORDINATED WORKING / INSTALLATION DRAWINGS AS REFERRED TO IN THE CONTRACT DOCUMENTATION

GENERAL NOTES

- DO NOT SCALE FROM THIS DRAWING.
- THIS SECTION TO BE READ IN CONJUNCTION WITH THE SPECIFICATION, ARCHITECTS DIMENSIONED LAYOUTS AND ALL OTHER RELEVANT CONTRACT DRAWINGS.
- ALL INSTALLATIONS TO COMPLY FULLY WITH CURRENT WATER BYELAWS, REQUIREMENTS OF BS 6700, BS-EN-806 AND LOCAL WATER AUTHORITIES.
- ALL FITTINGS, PLANT AND EQUIPMENT TO BE INSTALLED, REGULATED AND TESTED IN ACCORDANCE WITH THE MANUFACTURERS PRINTED INSTRUCTIONS.
- ALL PIPEWORK, FITTINGS AND EQUIPMENT TO BE INSTALLED TO PROVIDE SYSTEMS FREE OF AIR LOCKS, WATER HAMMER OR LEAKS.
- ALL SERVICES IN COPPER PIPEWORK TO BS 2871 PART 1: TABLE X & BS-EN-1057.
- ALL FITTINGS TO BE NON-DEZINCIFIABLE AND COMPLY WITH BS 864 & BS-EN-1254.
- ALL CAPILLARY FITTINGS TO HAVE LEAD FREE SOLDER RINGS AS YORKSHIRE POTABLE RANGE.
- STOPCOCKS & GATE VALVES TO BS 5154, DOUBLE CHECK VALVES & NON RETURN VALVES TO BS 6282 : DRAIN VALVES TO BS-EN-1254.
- ALL TERMINAL CONNECTIONS TO APPLIANCES TO BE FITTED WITH INDEPENDENT BALLOFIX VALVES.
- ALL VALVES TO BE FULLY ACCESSIBLE AND BE PROVIDED WITH IDENTIFICATION LABELS.
- DRAIN VALVES TO BE PROVIDED AT ALL LOW POINTS IN ALL SYSTEMS.
- ALL PIPEWORK IN CEILING VOID DUCTS AND ENCLOSURES TO BE FULLY INSULATED. PIPEWORK WITHIN FLOOR VOIDS TO HAVE ARMOURFLEX INSULATION DUE TO SPACE RESTRICTIONS.
- ALL EXTERNAL PIPEWORK EXPOSED TO BE TRACED HEATED, INSULATED AND PROTECTED TO SUIT EXTERNAL CONDITIONS.
- THE PLUMBING CONTRACTOR SHALL BE RESPONSIBLE FOR CO-ORDINATION OF THEIR WORKS WITH ALL OTHER TRADES.
- THE PLUMBING CONTRACTOR SHALL ALLOW FOR ALL THE BUILDERS WORK IN CONNECTION WITH THE INSTALLATION OF THE WATER SERVICES.
- ALL HOT WATER OUTLETS WITH THE EXCEPTION OF CLEANERS SINKS SHALL HAVE TMV'S FITTED.

LEGEND

- BOOSTED COLD WATER SERVICE(BCWS)
- HOT WATER FLOW SERVICE(HWFS)
- PIPEWORK IN CEILING VOID
- PIPEWORK AT HIGH LEVEL
- PIPEWORK AT LOW LEVEL
- PIPEWORK BELOW FINISHED FLOOR LEVEL

- CV CEILING VOID
- FA FROM ABOVE
- TA TO ABOVE
- FB FROM BELOW
- TB TO BELOW
- HL HIGH LEVEL
- LL LOW LEVEL
- IV ISOLATING VALVE
- SV STOP VALVE
- BV 1/2 TURN BALL VALVE
- LSV LOCKSHIELD VALVE
- NRV NON RETURN VALVE
- DCVA DOUBLE CHECK VALVE
- DOC DRAIN-OFF COCK
- WM WATER METER

P02 TENDER ISSUE	SM	RL	RL	15.10.21
P01 STAGE 3	SM	RL	RL	01.10.21
REV DESCRIPTION	BY	CHK	APP	DATE

Project Status:

TENDER

The Multi-disciplinary Engineering Consultancy

Ground Floor, 45 Great Guildford Street
London, SE1 0ES
T: +44 (0) 203 735 5950
E: london@harleyhaddow.com
Edinburgh | London | Glasgow
harleyhaddow.com
Association for Consultancy and Engineering Member Firm

Project: 307685

**HORNIMAN MUSEUM
SECURITY CONTROL ROOM**

Drawing Title:
WATER SERVICES LAYOUT

Scale @ A1 1:25	Date OCT 2021	Engineer RL
Drawing No. 307685-HAH-ZZ-01-DR-M-05310	Revision P02	