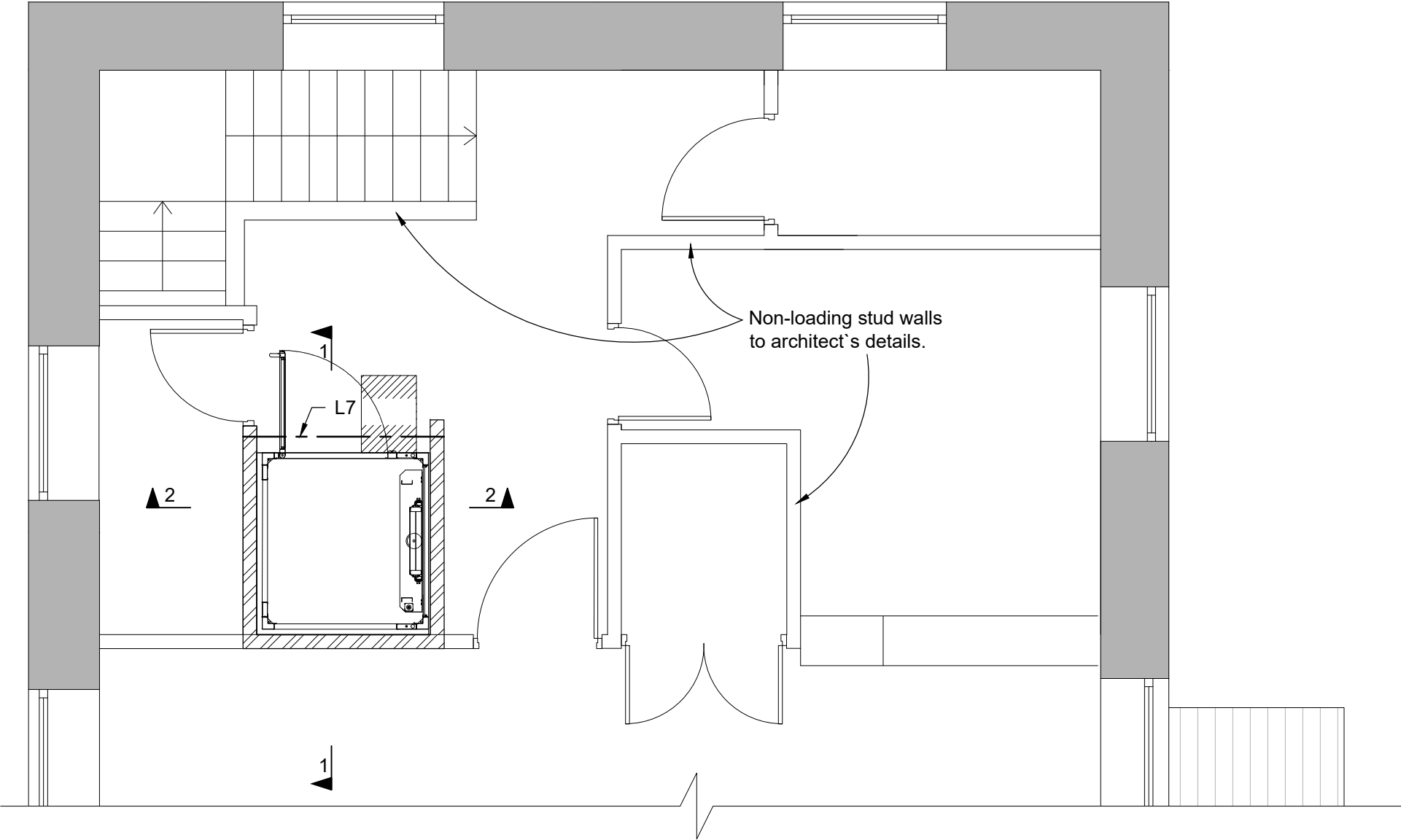


DO NOT SCALE FROM THIS DRAWING

This drawing is the copyright of Rhodes & Partners and must not be copied or passed to a third party without consent of the company.

Construction Notes:

For all Construction Notes please refer to Rhodes and Partners drawing D26536-102.



First Floor Plan
[Scale 1:50]



-	-	-	-	-
Rev	Description	By	Chkd	Date

Drawing Status:
PRELIMINARY

Rhodes
&partners

Consulting Civil and Structural Engineers
Suite 4, Marple House, 39 Stockport Road, Marple, Stockport SK6 6BD
t:0161 427 8388 e:office@rhodesandpartners.co.uk

Client:
High Peak Architects Ltd

Project:
The Mechanics Institute, Whaley Bridge
SK23 7AA

Drawing Title:
Lift Installation Structural Details
- Sheet 3

Drawn By: DB	Checked By: PRG	Date: 01/06/2023	Scale: As shown on A3
-----------------	--------------------	---------------------	--------------------------

Drawing No: D26536-103	Revision: P1
---------------------------	-----------------