

Shaftesbury Play Spaces Upgrade: Proposal Plans

for

Shaftesbury Town Council

Aileen Shackell Landscape Design

V4

August 2023

FOR TENDER

Contents

Introduction

Site proposals and schedules of works

Ash Close Play Area	SP7 8RG
Barton Hill Recreation Ground	SP7 8QA
Enmore Green Play Area	SP7 8LL
Gower Road Play Area	SP7 8RU

Site Locations

Tenders are invited from contractors for improvements to four play spaces in Shaftesbury, North Dorset. The fifth space (Cockrams) is to be omitted from the scope.

The improvements represent relatively minor changes to small scale play spaces which over the years have deteriorated. Improvements include the introduction of a few new items of play equipment, small scale improvements to the landscape setting, and to site furniture and fittings.

All of the play areas are freely accessible around the clock and all contractors tendering are expected to inspect the sites prior to submitting a tender.

We are currently assuming due to the small scale of the scheme that it would not have to comply fully with the CDM regulations however we would expect to discuss this with whoever is appointed and make whatever arrangements are required.

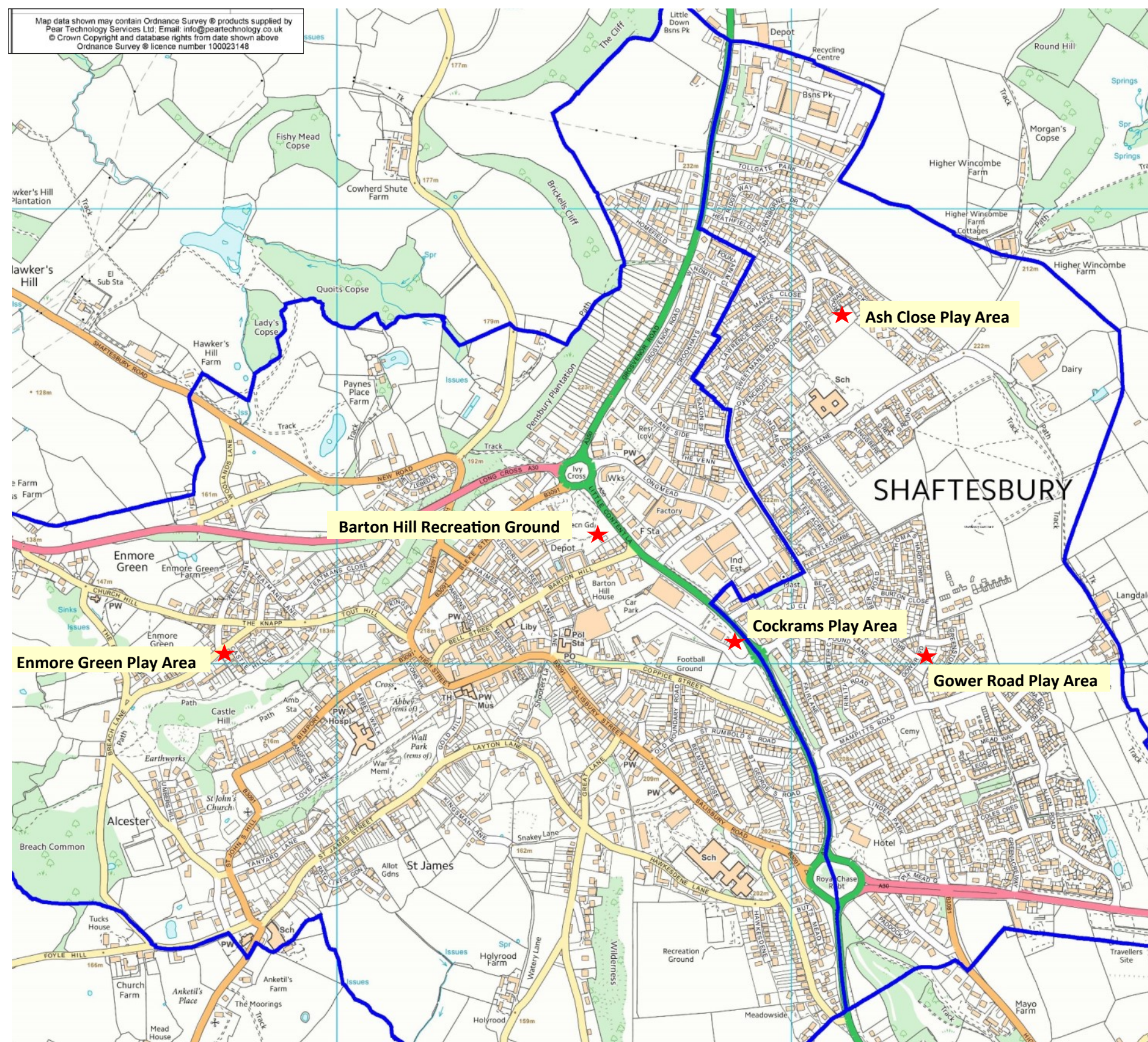


Figure 1: Play Space Locations



Location for new Basket Swing



Location for seating etc



Location for new Dutch Disc and Mounds A+B

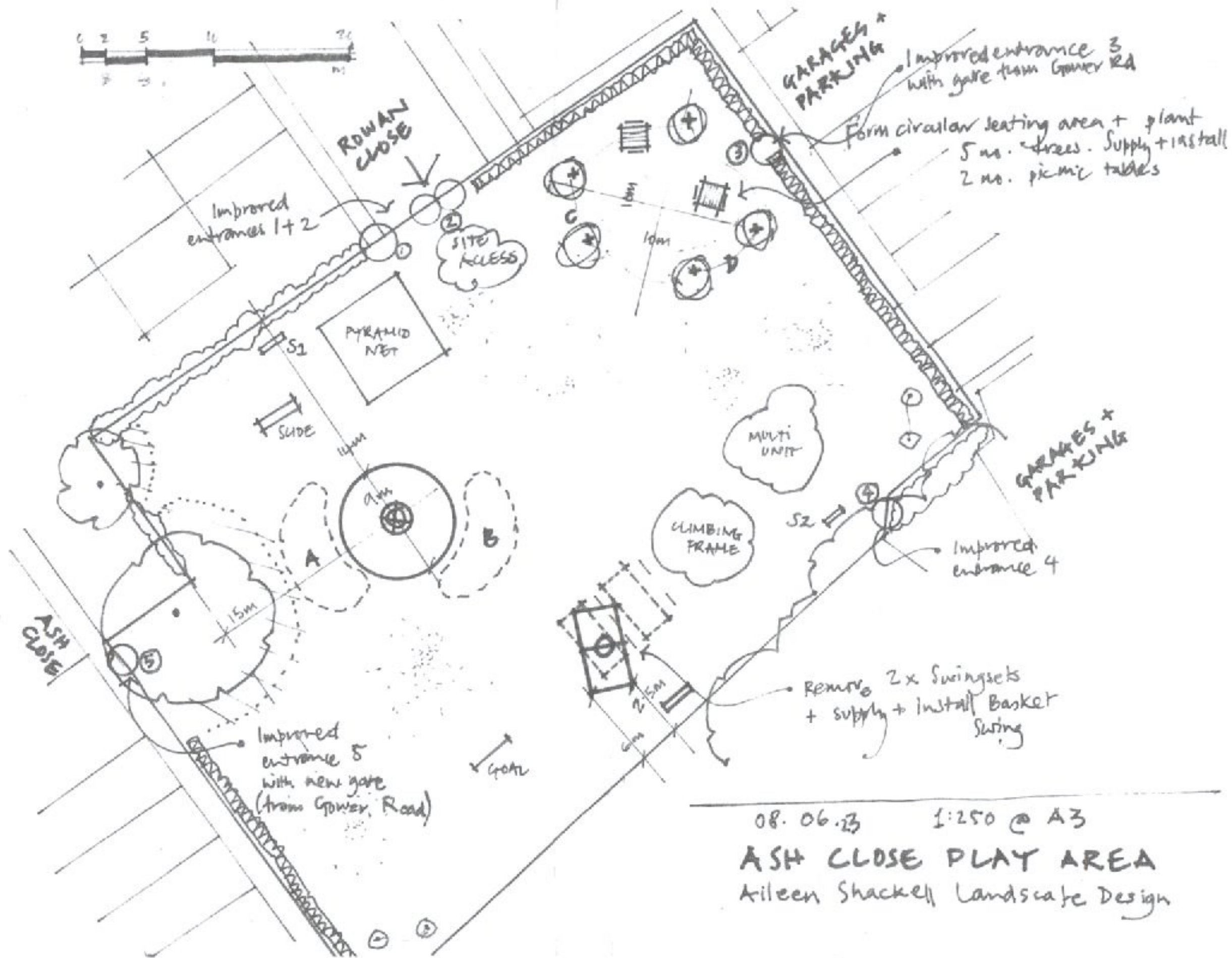


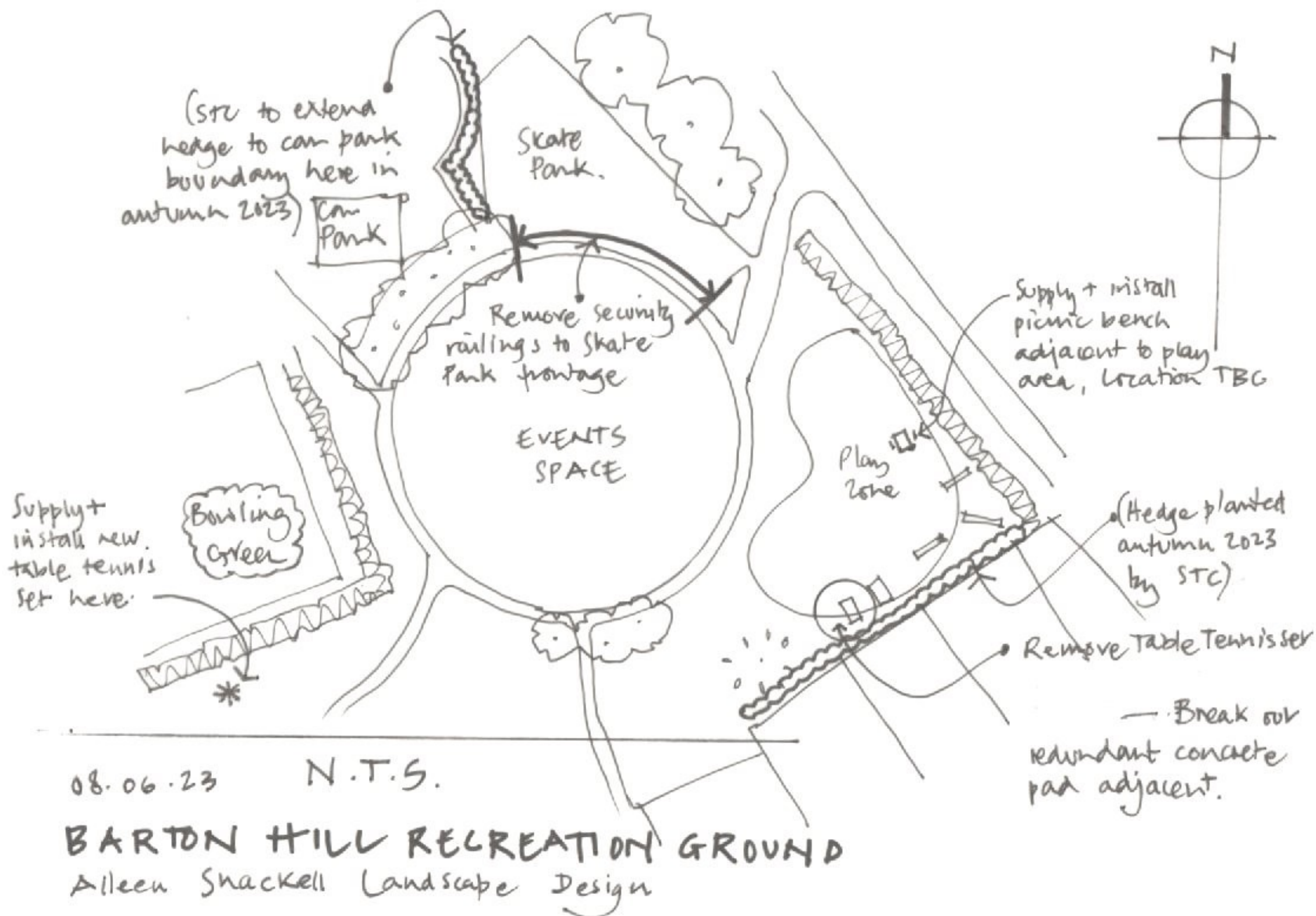
Above: entrances 1 and 2



Left: entrance 4

Above right: entrance 5





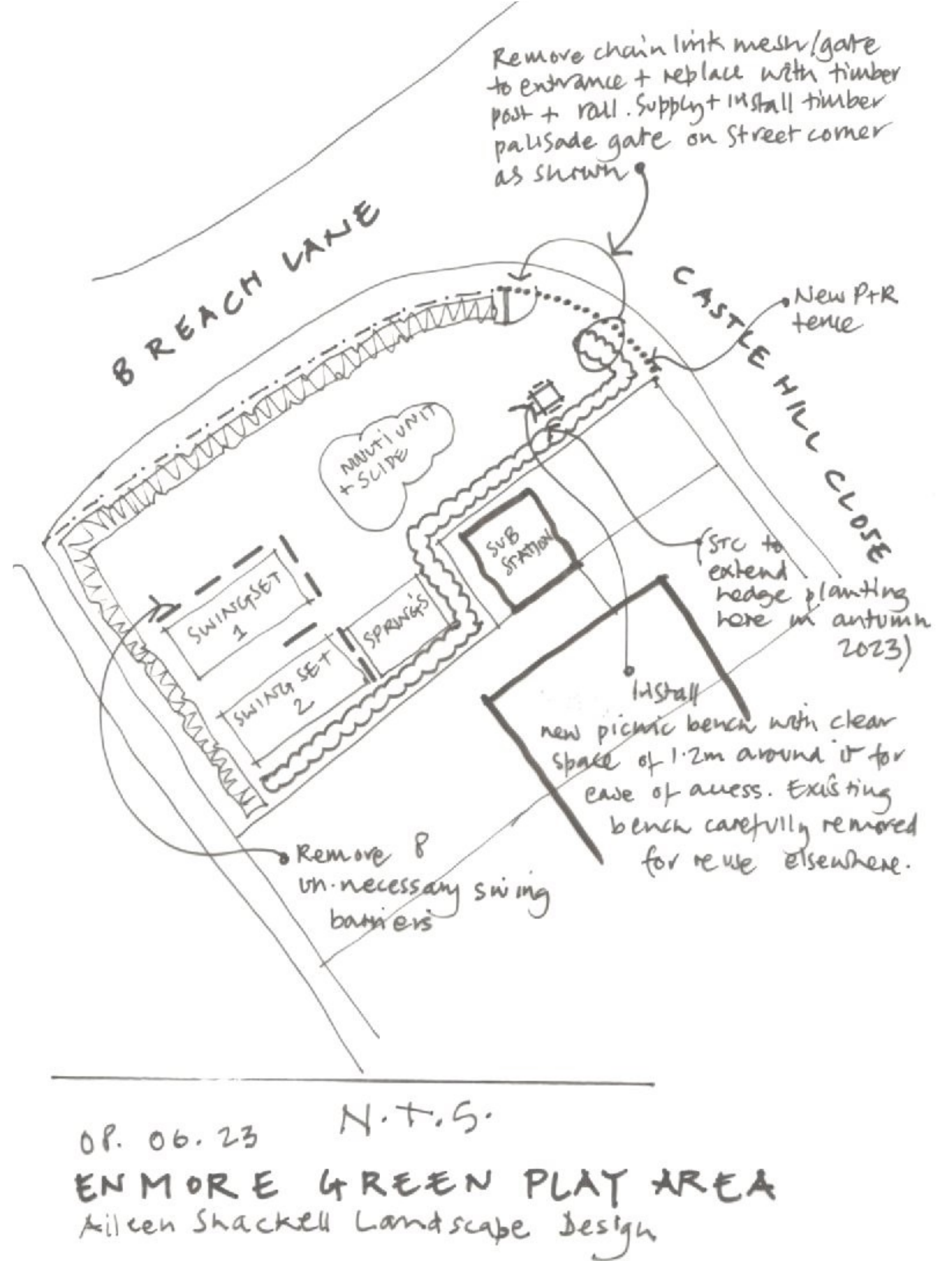
Top: railings to be removed (panel and posts)

Bottom: table tennis set to be removed and replaced with more appropriate style set in more suitable location, concrete pad to be removed and grass restored



Top: barriers to be removed and surfaces to be made good

Bottom: entrance gate relocated adjacent to hedge and picnic bench replaced with new one in better location. Chain link mesh replaced with timber post and rail across open (non hedge) section





Top: elephant piece to be removed and disposed of, green space beyond shows the treeline along which the equipment will be relocated

Bottom: Items to be relocated against treeline to north . Existing playground to be demolished and ground levels / grass to be reinstated. Path to be broken out.

