

Notes:

- THIS DRAWING SHALL BE READ IN CONJUNCTION WITH ALL OTHER DRAWINGS, SPECIFICATIONS, SCHEDULES AND BUILDING MODELS INCLUDING SCHEMATICS. THE CONTRACTOR SHALL REFER TO THE ARCHITECTS DRAWINGS FOR SETTING OUT DETAILS/DIMENSIONS.
- THE ELECTRICAL SERVICES INSTALLATIONS ARE DESIGNED TO COMPLY FULLY WITH THE BUILDING REGULATIONS STANDARDS, AND ARE DESIGNED IN ACCORDANCE WITH THE RECOMMENDATIONS OF THE CIBSE GUIDES, AS ISSUED BY THE CHARTERED INSTITUTION OF BUILDING SERVICES ENGINEERS.
- REFER TO THE ARCHITECTS DRAWINGS FOR DETAILS OF ALL BUILDING FIRE COMPARTMENTATION BARRIERS. ANY SERVICES PENETRATING THE FIRE COMPARTMENT SHALL BE FIRE SEALED USING THE APPROVED PENETRATION DETAIL.
- ALL PENETRATIONS THROUGH FIRE WALLS SHALL BE FIRE STOPPED TO MAINTAIN THE FIRE INTEGRITY OF THE FIRE WALL. ALL SLAB PENETRATIONS TO HAVE FIRE STOPPING TO MAINTAIN THE INTEGRITY OF THE FIRE RATED SLAB. THE CONTRACTOR SHALL MAKE GOOD ALL PENETRATIONS TO THE APPROVAL OF BUILDING CONTROL.
- THIS DRAWING SHALL NOT BE USED FOR INSTALLATION. THE ELECTRICAL SERVICES CONTRACTOR SHALL BE RESPONSIBLE FOR PRODUCTION OF COORDINATED INSTALLATION DRAWINGS CHECKED WITH ACTUAL SITE DIMENSIONS.
- ALL DIMENSIONS WHERE INDICATED ARE IN MILLIMETRES UNLESS STATED OTHERWISE. ALL DIMENSIONS SHALL BE CHECKED ON SITE PRIOR TO COMMENCEMENT OF ANY WORKS.
- ALL CABLES TO BE WITHIN VOIDS UNLESS OTHERWISE STATED.
- THE EMERGENCY LIGHTING SYSTEM SHALL BE INSTALLED IN ACCORDANCE WITH BS5266 PART 1.
- SIGNAGE SHALL BE TO BS5499 PART 4.

Legend:

- EMERGENCY LIGHTING
- LIGHTING CIRCUIT LINES
- CIRCULAR LUMINAIRE
- EMERGENCY CIRCULAR LUMINAIRE
- CIRCULAR WALL LUMINAIRE
- EMERGENCY CIRCULAR WALL LUMINAIRE
- LINEAR LUMINAIRE
- EMERGENCY LINEAR LUMINAIRE
- EMERGENCY EXIT LUMINAIRE
- PIR SENSOR
- SWITCH
- SWITCHING ARROW
- ABSENCE DETECTION
- DAYLIGHT SENSOR
- DISTRIBUTION BOARD

Rev	Date	By	Chk	Aprvd	Description
-----	------	----	-----	-------	-------------

PROJECT
Midsomer Norton Town Hall

CLIENT

Bath & North East
Somerset Council



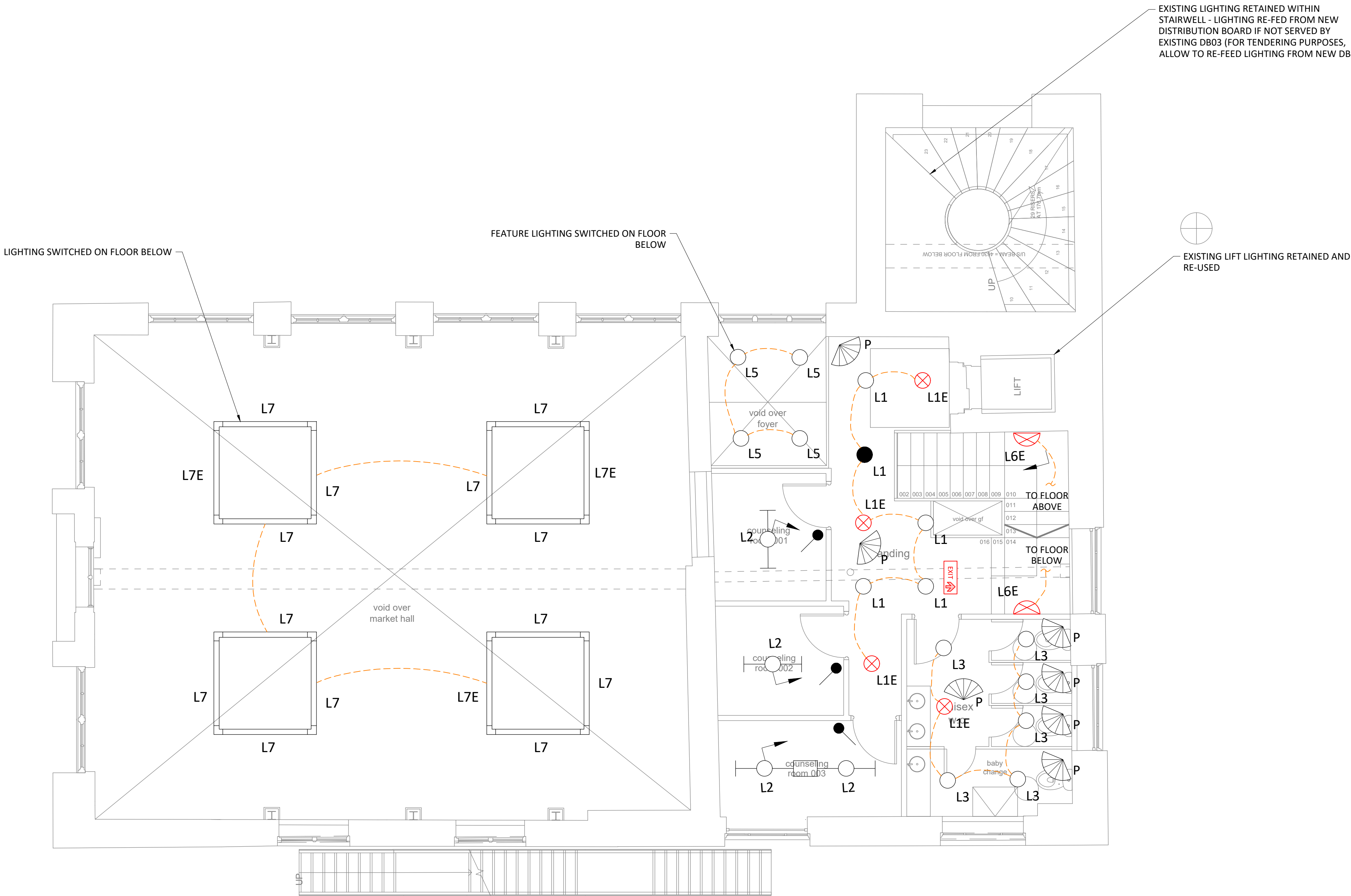
www.methodllp.com Bristol Tel: 0117 203 5160

DRAWING TITLE
Lighting Services
First Floor

STATUS
S2 - FOR TENDER

DATE	SCALE	DRWN BY	CHK BY	APVD BY
21.10.21	1:50 - A1	ARG	DMS	DMS
DRAWING NUMBER				REVISION No.
1716PMN-MET-P1-01-DR-E-6302				S2 - T01

Scaling Note: Do NOT scale from this drawing.



SAFETY, HEALTH & ENVIRONMENTAL INFORMATION

FOR DETAILS OF SITE-WIDE AND GENERAL RISKS, TO BE READ IN CONJUNCTION WITH THESE NOTES, SEE THE CONTRACT DOCUMENTS AND, WHERE WORKS ARE NOTIFIABLE, THE PRE-CONSTRUCTION INFORMATION

IN ADDITION TO THE RISKS NORMALLY ASSOCIATED WITH THE TYPES OF WORK DETAILED ON THIS DRAWING, NOTE THE FOLLOWING RISKS AND INFORMATION:

CONSTRUCTION:
C1.Abstesos - Refer to DHRA for details
C2.Electrocution from working on live services - Refer to DHRA for details
C3.Working at height to install services - Refer to DHRA for details

DISMANTLING/DEMOLITION (FUTURE):

D1.
D2.
D3.

IT IS ASSUMED THAT ALL WORKS WILL BE CARRIED OUT BY A COMPETENT CONTRACTOR WORKING, WHERE APPROPRIATE, TO AN APPROVED METHOD STATEMENT

THIS DRAWING IS NOT TO BE USED FOR CONSTRUCTION. INSTALLATION DRAWINGS SHOULD BE PRODUCED BY THE CONTRACTOR AND AGREED WITH THE CLIENT TEAM PRIOR TO ANY INSTALLATION WORK

THIS DRAWING SHALL BE PRINTED IN COLOUR