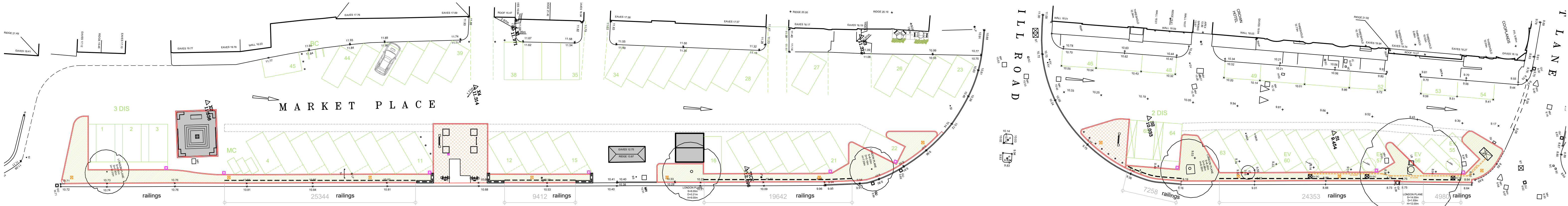
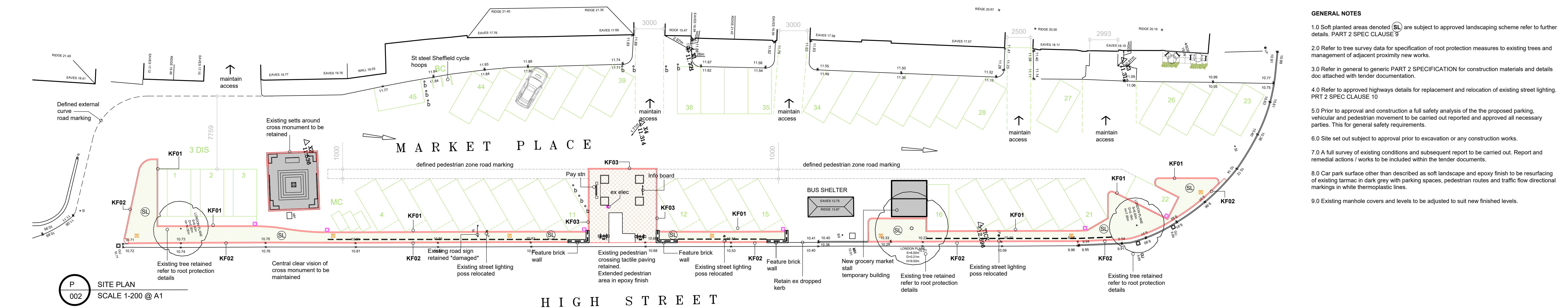


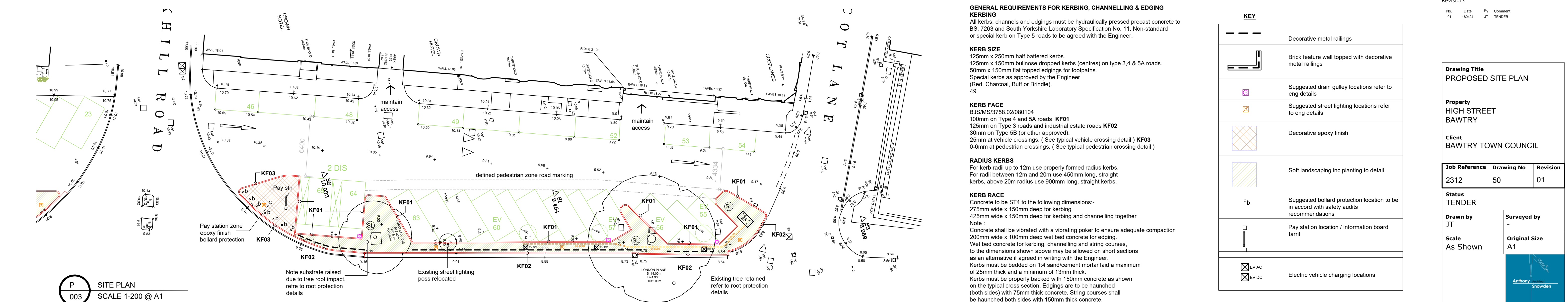
E
001
SITE SECTIONAL ELEVATION
SCALE 1-250 @ A1



P
001
SITE PLAN
SCALE 1-250 @ A1
65 PARKING SPACES
INC EV PARKING AND DISABLED



P
002
SITE PLAN
SCALE 1-200 @ A1



P
003
SITE PLAN
SCALE 1-200 @ A1

GENERAL NOTES

- 1.0 Soft planted areas denoted (SL) are subject to approved landscaping scheme refer to further details. PART 2 SPEC CLAUSE 9
- 2.0 Refer to tree survey data for specification of root protection measures to existing trees and management of adjacent proximity new works.
- 3.0 Refer in general to generic PART 2 SPECIFICATION for construction materials and details doc attached with tender documentation.
- 4.0 Refer to approved highways details for replacement and relocation of existing street lighting. PRT 2 SPEC CLAUSE 10
- 5.0 Prior to approval and construction a full safety analysis of the the proposed parking, vehicular and pedestrian movement to be carried out reported and approved all necessary parties. This for general safety requirements.
- 6.0 Site set out subject to approval prior to excavation or any construction works.
- 7.0 A full survey of existing conditions and subsequent report to be carried out. Report and remedial actions / works to be included within the tender documents.
- 8.0 Car park surface other than described as soft landscape and epoxy finish to be resurfacing of existing tarmac in dark grey with parking spaces, pedestrian routes and traffic flow directional markings in white thermoplastic lines.
- 9.0 Existing manhole covers and levels to be adjusted to suit new finished levels.

GENERAL REQUIREMENTS FOR KERBING, CHANNELLING & EDGING

KERBING
All kerbs, channels and edgings must be hydraulically pressed precast concrete to BS 7263 and South Yorkshire Laboratory Specification No. 11. Non-standard or special kerb on Type 5 roads to be agreed with the Engineer.

KERB SIZE
125mm x 250mm half battered kerbs.
125mm x 150mm bullnose dropped kerbs (centres) on type 3, 4 & 5A roads.
50mm x 150mm flat topped edgings for footpaths.
Special kerbs as approved by the Engineer
(Red, Charcoal, Buff or Brindle).
49

KERB FACE
BJS/MS/3758.02/080104
100mm on Type 4 and 5A roads **KF01**
125mm on Type 3 roads and industrial estate roads **KF02**
30mm on Type 5B (or other approved).
25mm at vehicle crossings. (See typical vehicle crossing detail) **KF03**
0-6mm at pedestrian crossings. (See typical pedestrian crossing detail)

RADIUS KERBS
For kerb radii up to 12m use properly formed radius kerbs.
For radii between 12m and 20m use 450mm long, straight kerbs, above 20m radius use 900mm long, straight kerbs.

KERB RACE
Concrete to be ST4 to the following dimensions:-
275mm wide x 150mm deep for kerbing
425mm wide x 150mm deep for kerbing and channelling together
Note:
Concrete shall be vibrated with a vibrating poker to ensure adequate compaction
200mm wide x 100mm deep wet bed concrete for edging.
Wet bed concrete for kerbing, channelling and string courses, to the dimensions shown above may be allowed on short sections as an alternative if agreed in writing with the Engineer.
Kerbs must be bedded on 1:4 sand/cement mortar laid a maximum of 25mm thick and a minimum of 13mm thick.
Kerbs must be properly backed with 150mm concrete as shown on the typical cross section. Edgings are to be haunched (both sides) with 75mm thick concrete. String courses shall be haunched both sides with 150mm thick concrete.

KEY

	Decorative metal railings
	Brick feature wall topped with decorative metal railings
	Suggested drain gully locations refer to eng details
	Suggested street lighting locations refer to eng details
	Decorative epoxy finish
	Soft landscaping inc planting to detail
	Suggested bollard protection location to be in accord with safety audits recommendations
	Pay station location / information board tariff
	Electric vehicle charging locations

Revisions

No.	Date	By	Comment
01	18/04/24	JT	TENDER

Drawing Title
PROPOSED SITE PLAN

Property
HIGH STREET
BAWTRY

Client
BAWTRY TOWN COUNCIL

Job Reference	Drawing No	Revision
2312	50	01

Status
TENDER

Drawn by
JT

Scale
As Shown

Surveyed by

Original Size
A1