

ITT: Object Movement & Storage, and freezing services
Information about NH.H.44 Walrus



Walrus

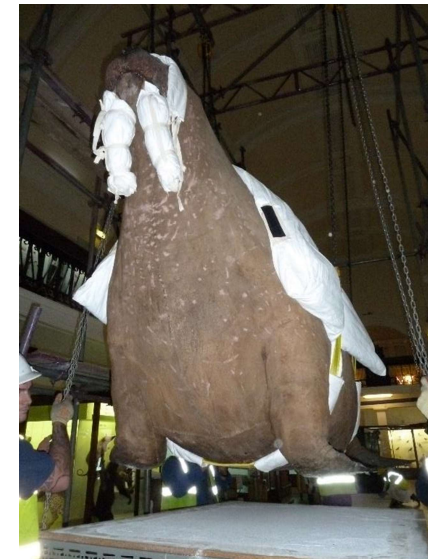
Accession Number: NH.H.44

Approx Dimensions: H 1630mm x L 2700mm x W1410mm

Weight: Approximately 1 tonne



Walrus sits on a steel structure that it will need to be lifted from.



Example of prior crate and indicative measurements for internal base plinth for crate.

Previous approx. dims of internal base that walrus sits on: 160cm x 290cm

