

## **PART TWO**

### **SPECIFICATION**

Kettering benefits from having a cluster of heritage assets located within the town centre's Cultural Quarter- Alfred East Art **G**allery, **L**ibrary and Manor House **M**useum (**GLaM**). A feasibility study conducted in 2019 identified options to significantly improve and transform the physical assets within GLaM.

An expression of interest has been made via our Local Enterprise Partnership (SEMLEP) for GLaM (Transformational Option) to be within the regional pipeline of projects for future funding opportunities.

For us to be able to access funding opportunities, when they become available, we are commissioning a further piece of work.

#### **Specifically: -**

##### **Using RIBA Plan of Work 2013 to:-**

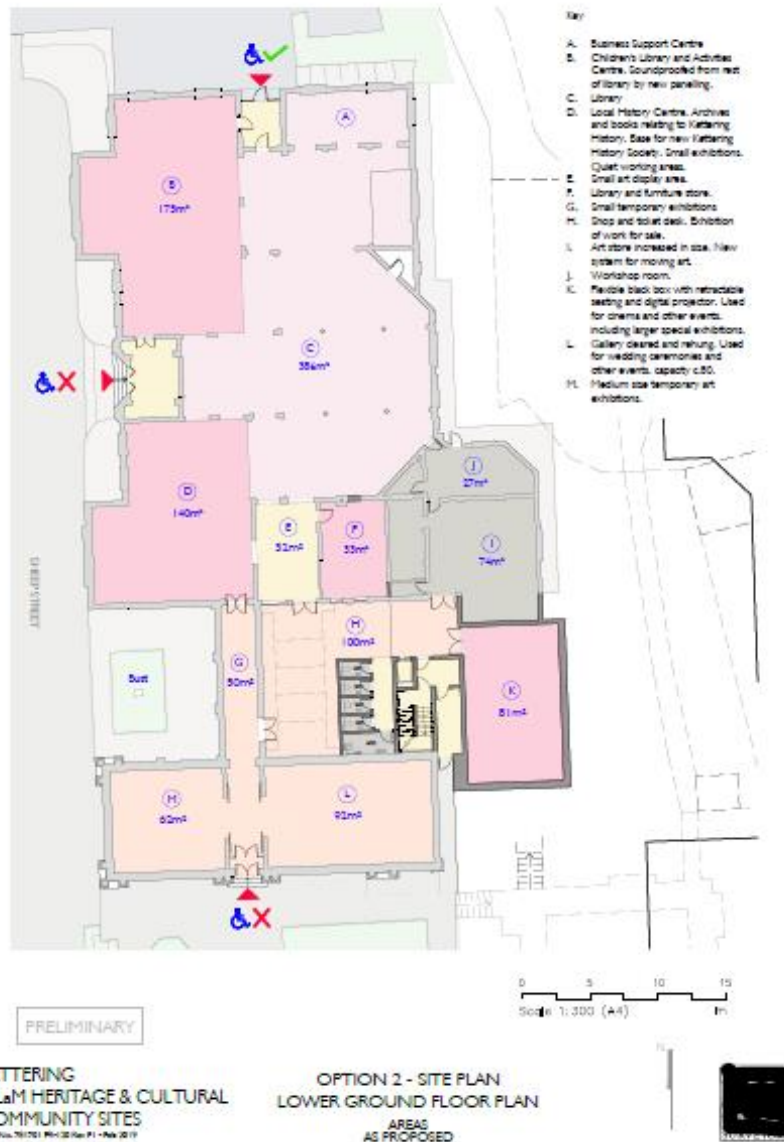
- Progress the project whereby at the end of RIBA Stage 3 (Developed Design) we have sufficient detail to enable a full planning application to be submitted by January 2021
- To include relevant structural, building and architectural works, surveys and design as defined within RIBA Plan of Work 2013
- Provide a stage 3 project programme setting out specific stage dates detailed /programme duration and costs
- Option to progress to stage 4 Technical Design

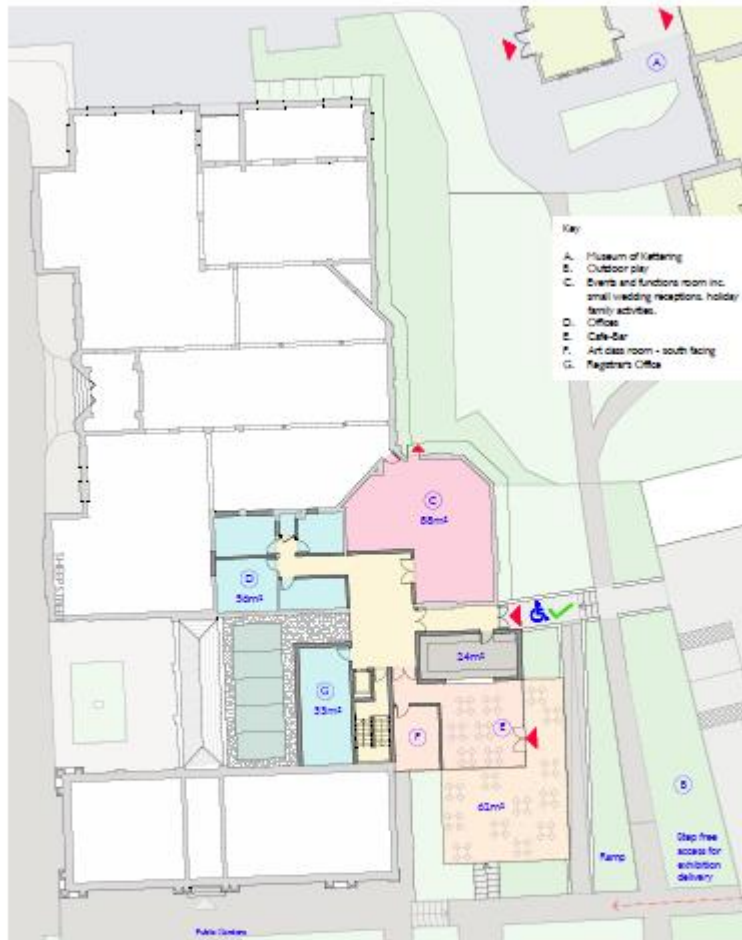
### **Appendices**

1. Gallery and Library – Transformational (Option 2) site plan lower and upper floors\*
2. Museum- Proposed works and alterations

\*Note: Proposed Option 2 site plans for Gallery and Library have been taken from the feasibility study. A full copy of the feasibility study will be made available to interested parties e-mail [collettelilley@kettering.gov.uk](mailto:collettelilley@kettering.gov.uk)

## Appendix 1





PRELIMINARY

KETTERING  
GLAM HERITAGE & CULTURAL  
COMMUNITY SITES  
JAN 15/16 TO 17/16 10/16 11/16 12/16 1/17

OPTION 2 - SITE PLAN  
UPPER GROUND FLOOR PLAN  
AREAS  
AS PROPOSED

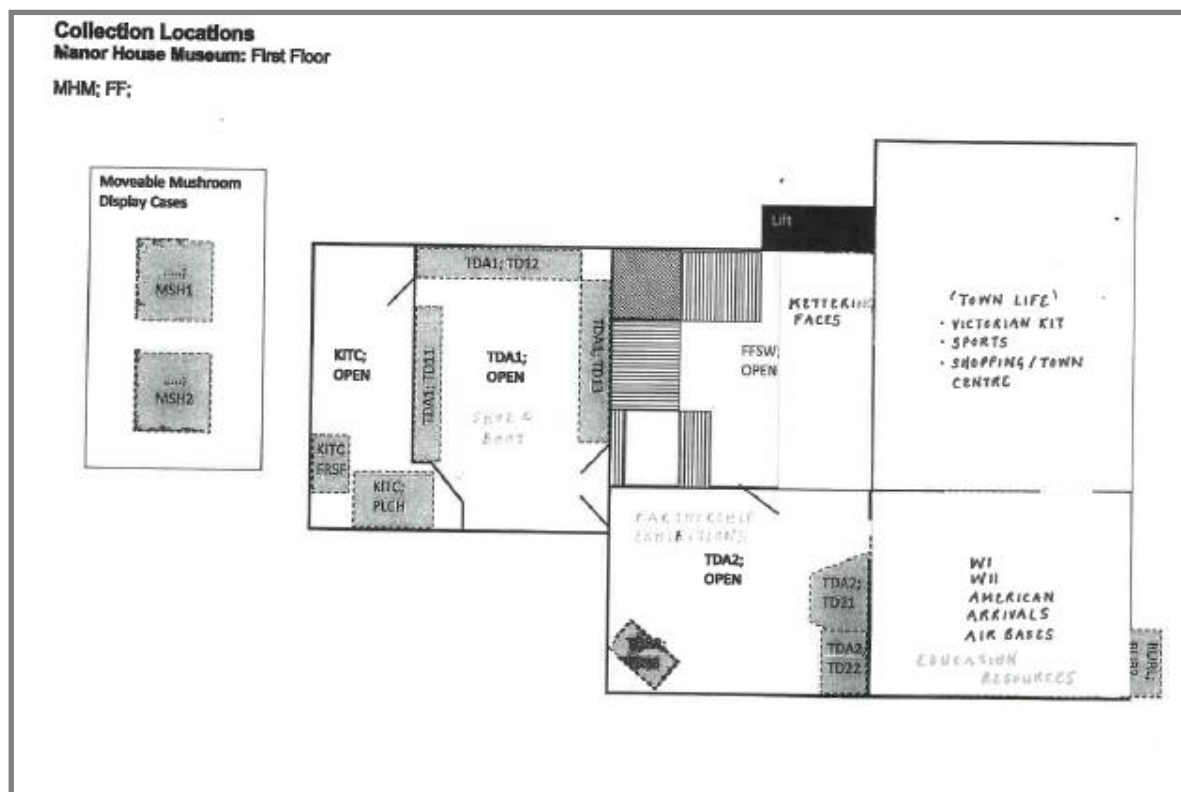
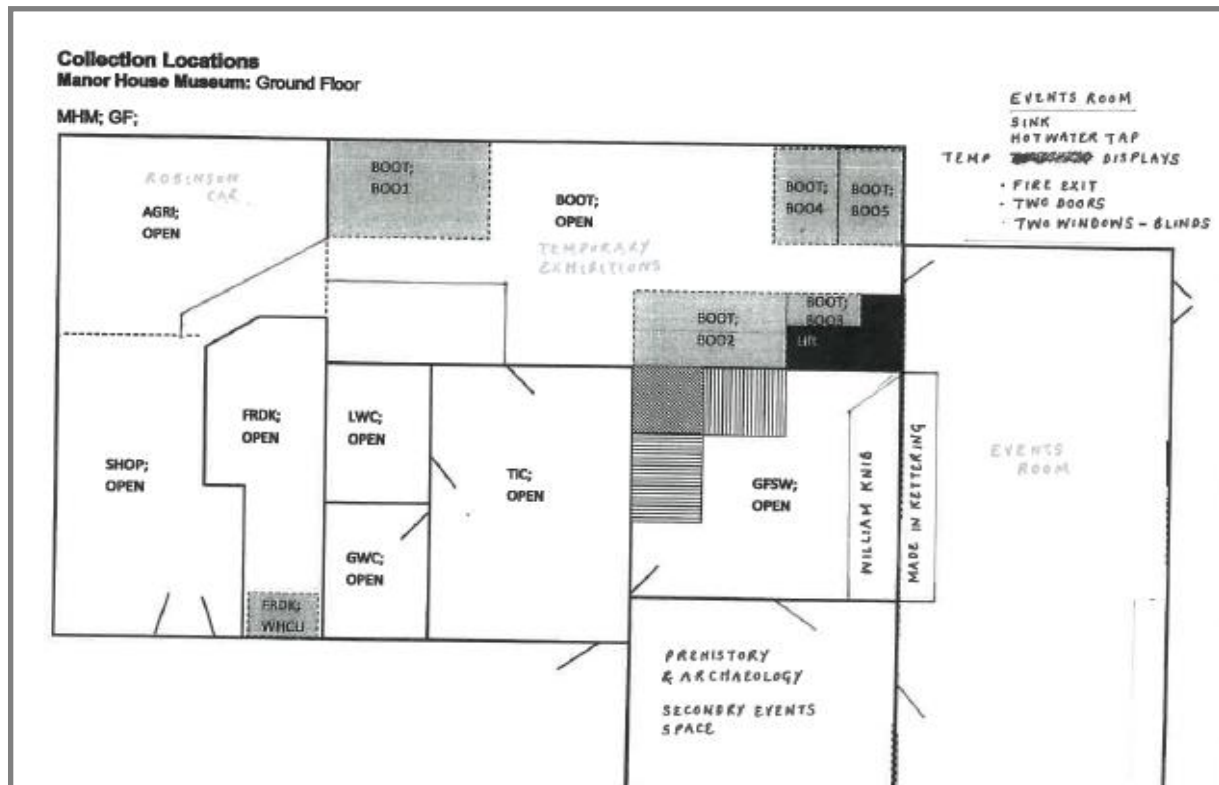
0 5 10 15  
Scale 1:300 (A4)  
m



## Appendix 2

### Museum Improvements

- Creation of a more visible entrance
- Reconfiguration in internal floorspace to improve flow and enable quality temporary exhibitions, events and community/ educational usage (KBC initial sketches below)



## MHM; FF;

