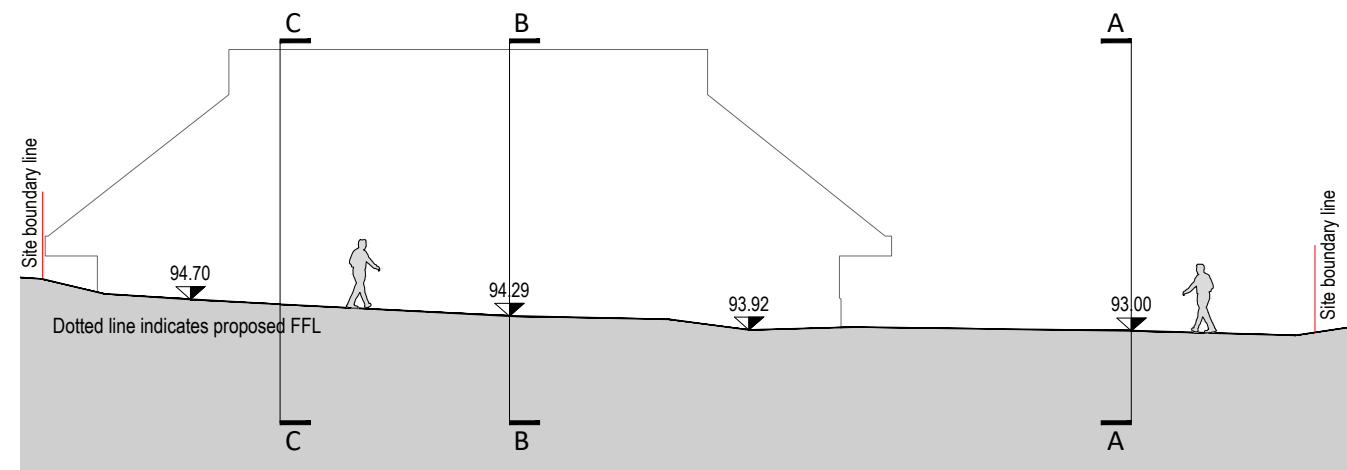
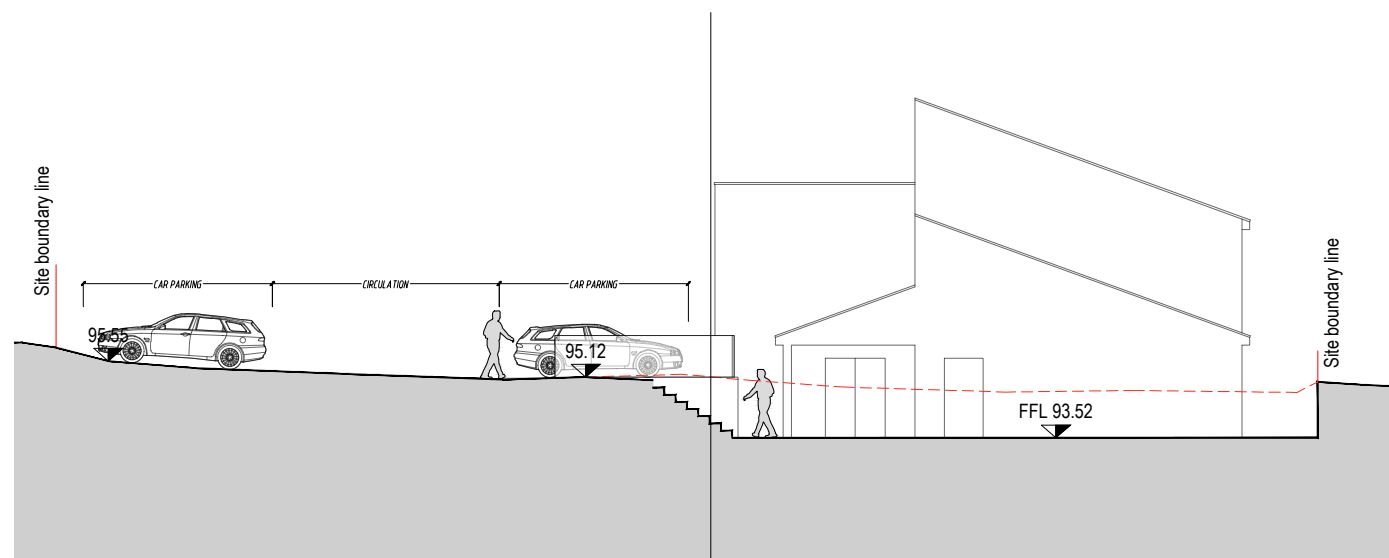


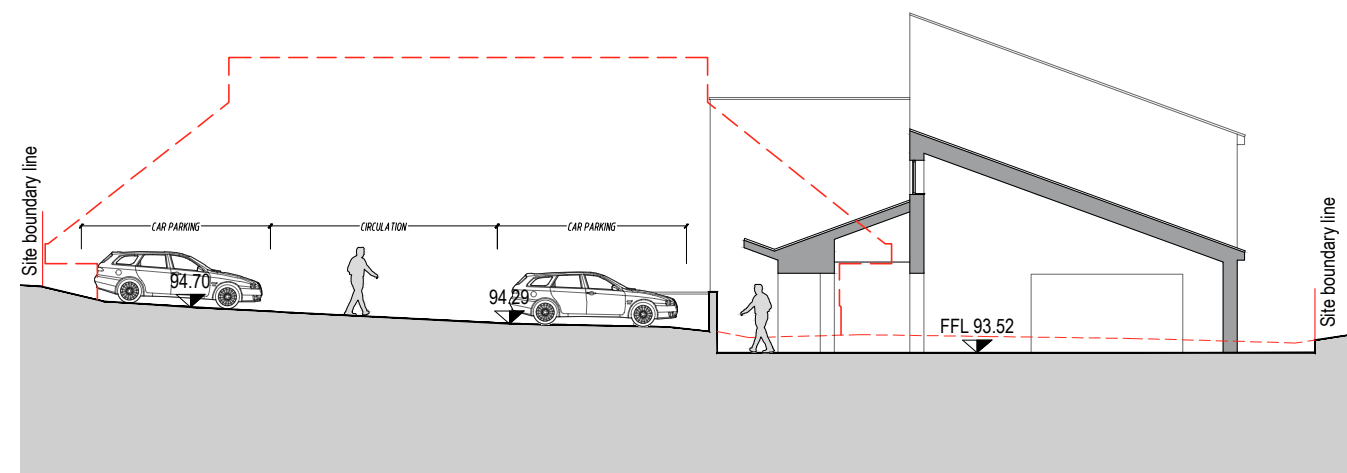
SECTION D-D  
(Existing) 1:200@A3



SECTION E-E  
(Existing) 1:200@A3



SECTION D-D  
(Proposed) 1:200@A3



SECTION E-E  
(Proposed) 1:200@A3

PRELIMINARY

Rev	Date	Notes
A	17.03.22	General update



	Stenton Obhi Architects 3 Lakeview House, Bond Avenue, Bletchley, Milton Keynes, Buckinghamshire, MK1 1FB		Campbell Park Parish Council 1 Pencarrow Place, Fishermead Milton Keynes, MK6 2AS		Community Hub Project Springfield Milton Keynes		CONCEPT DESIGN Site Section DD EE		STATUS <b>P</b>		DRAWN <b>QT</b>		CHECKED <b>NS</b>	
	t : 01908 732100 e: soa@so-architects.co.uk <a href="http://www.so-architects.co.uk">www.so-architects.co.uk</a>		CLIENT		PROJECT		DRAWING		DRAWING STATUS P - Preliminary T - Tender PL - Planning R - Record BR - Building Reg C - Construction		SCALE <b>1:200@A3</b>		DATE <b>Feb 22</b>	
											No <b>06325-117A</b>			

This drawing/design is for use solely in connection with the project. This drawing/design is the copyright of STENTON OBHI ARCHITECTS LTD and must not be reissued, loaned or copied without written consent. All dimensions/setting out to be checked on site by the contractor before construction proceeds. Use written dimensions only, do not scale from drawing. This drawing is to be read in conjunction with all construction status information relevant to the project. Any apparent discrepancy to be brought to the attention of STENTON OBHI ARCHITECTS LTD.