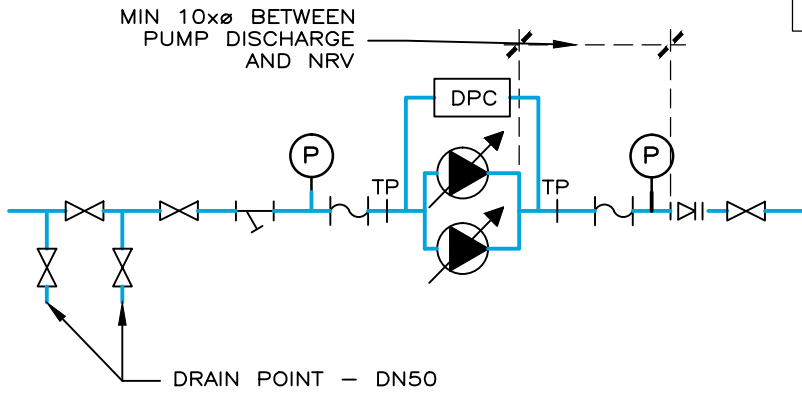


NOTES ON HAZARDS/ ACCESS/ MAINTENANCE
NO UNUSUAL HAZARDS IDENTIFIED



DETAIL 1 - IN LINE TWIN PUMP (1 DUTY/1 STAND BY) - HEATING&COOLING PUMP SET TYPICAL CONNECTION DETAIL

- GENERAL NOTES:
1. READ IN CONJUNCTION WITH MF LLP SPECIFICATION AND DRAWINGS
 2. PROVIDE ALL SAFETY VALVES, AIR VENTS, DRAINAGE POINTS, EXPANSION JOINTS AND OTHER FITTINGS AND SUNDRIES AS NECESSARY FOR A COMPLETE SYSTEM COMPLIANT WITH ALL APPLICABLE STATUTORY REQUIREMENTS.
 3. AIR VENTS ARE TO BE PROVIDED AT EACH SYSTEM HIGH POINT. AIR VENT AND ASSOCIATED PIPE CONNECTIONS SHOULD BE LINE-SIZE UP TO 25mm, THEN 25mm MIN FOR ALL LARGER PIPE. DRAIN COCKS ARE TO BE PROVIDED AT ALL LOW POINTS
 4. BINDER TEST POINTS ARE TO BE PROVIDED ACROSS ALL PUMPS, MOTORISED CONTROL VALVES AND STRAINERS
 5. ENSURE THAT ALL IV'S, NRV'S, STRAINERS AND FINAL PIPE WORK BENDS TO THE PUMPS ARE LINE SIZED AND NOT THE DIAMETER OF THE INLET/OUTLET CONNECTIONS OF THE PUMP. ALL FLUSHING BYPASS SHALL BE LINE SIZE, IF NOT OTHERWISE STATED
 6. FOR FROSTING PROTECTION THE SYSTEM SHALL BE PROTECTED WITH ETHYLENE GLYCOL 20% MIXING SOLUTION

- KEY
- COLD WATER PIPEWORK
 - DISTRIBUTION - SUPPLY & RETURN
 - IV.0x - ISOLATING VALVE
 - AJ.0x - ANTIVIBRATING JOINT
 - ST.0x - STRAINER
 - NR.0x - NON RETURN VALVE
 - M2P - 2 PORT MOTORISED CONTROL VALVE
 - M3P - 3 PORT MOTORISED CONTROL VALVE
 - FODRV - COMMISSIONING SET
 - DASV.01 - SAFETY VALVE
 - VODRV - VARIABLE ORIFICE DOUBLE REGULATING VALVE
 - TP - TEST POINT
 - VARIABLE SPEED PUMP
 - PUMP WORKING AT CONSTANT SPEED
 - T/P - TEMPERATURE/PRESSURE GAUGE
 - T - TEMPERATURE SENSOR
 - FS - FLOW SWITCH
 - P - PRESSURE SWITCH
 - DOSING POT
 - COOLING COIL
 - AV - AIR VENT POINT
 - DC - DRAIN COCK POINT
 - DPS - DIFFERENTIAL PRESSURE SENSOR
 - NC - NORMALLY CLOSED

P02	05/11/20	02 TENDER	EC
P01	16/10/20	02 TENDER	SH
rev	date	description	eng

MAX FORDHAM

Max Fordham LLP
Carver's Warehouse
77 Dale Street
Manchester
M1 3HG
T. +44 (0) 161 312 8071
F. +44 (0) 20 7482 0329
maxfordham.com

Registered Office 42-43 Gloucester Crescent London NW1 7PE
Registered in England No. 00300026

architect
DONALD INSALL ASSOCIATES

job title
**WALKER ART GALLERY
LIVERPOOL**

project leader date scale (at A1)
MD SEP 20 NTS

drawing title
**COOLING SYSTEM
SCHEMATIC**

job no dwg no rev
J6683 6683-MXF-XX-XX-DR-P-20101/ P02