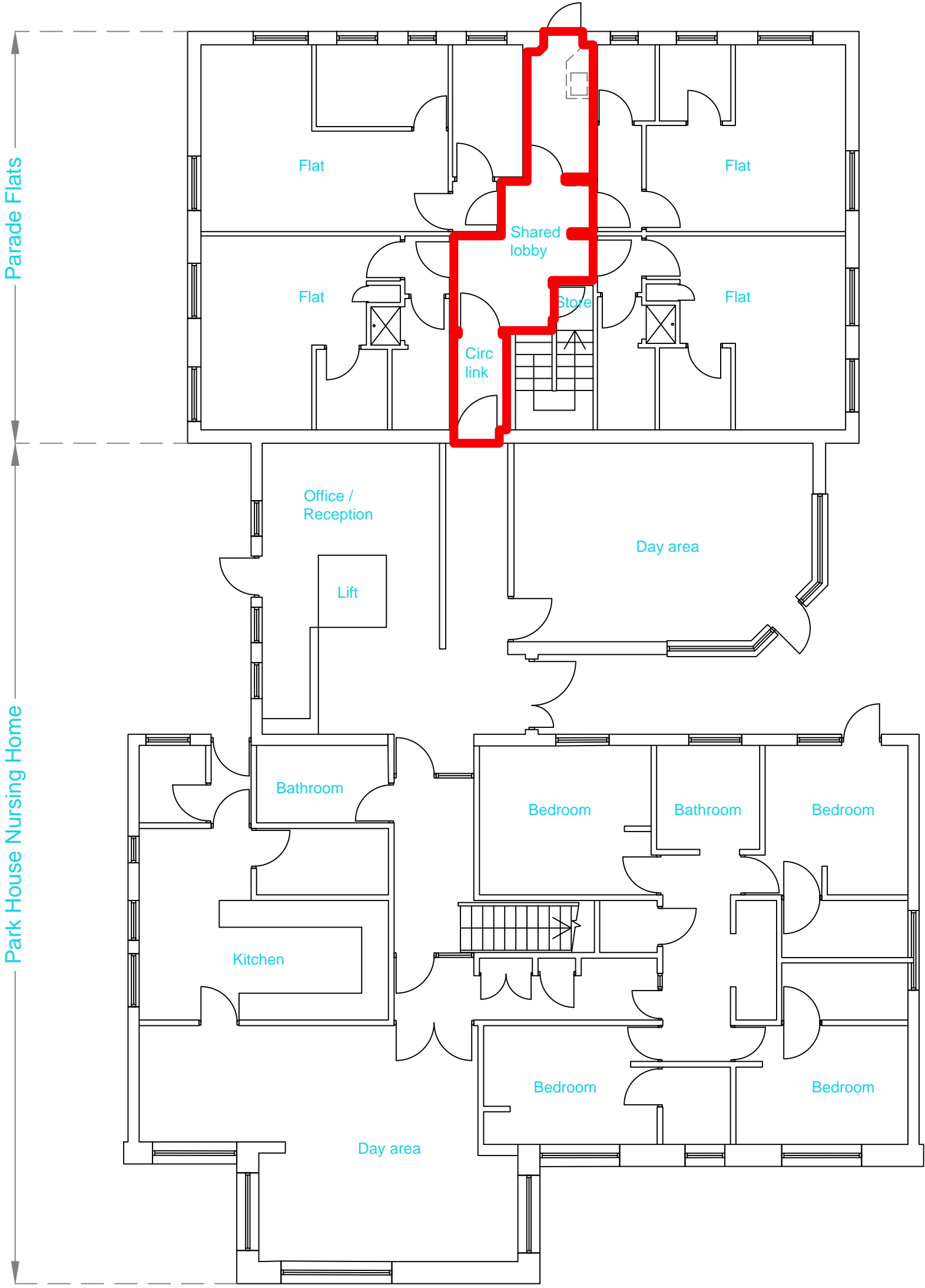
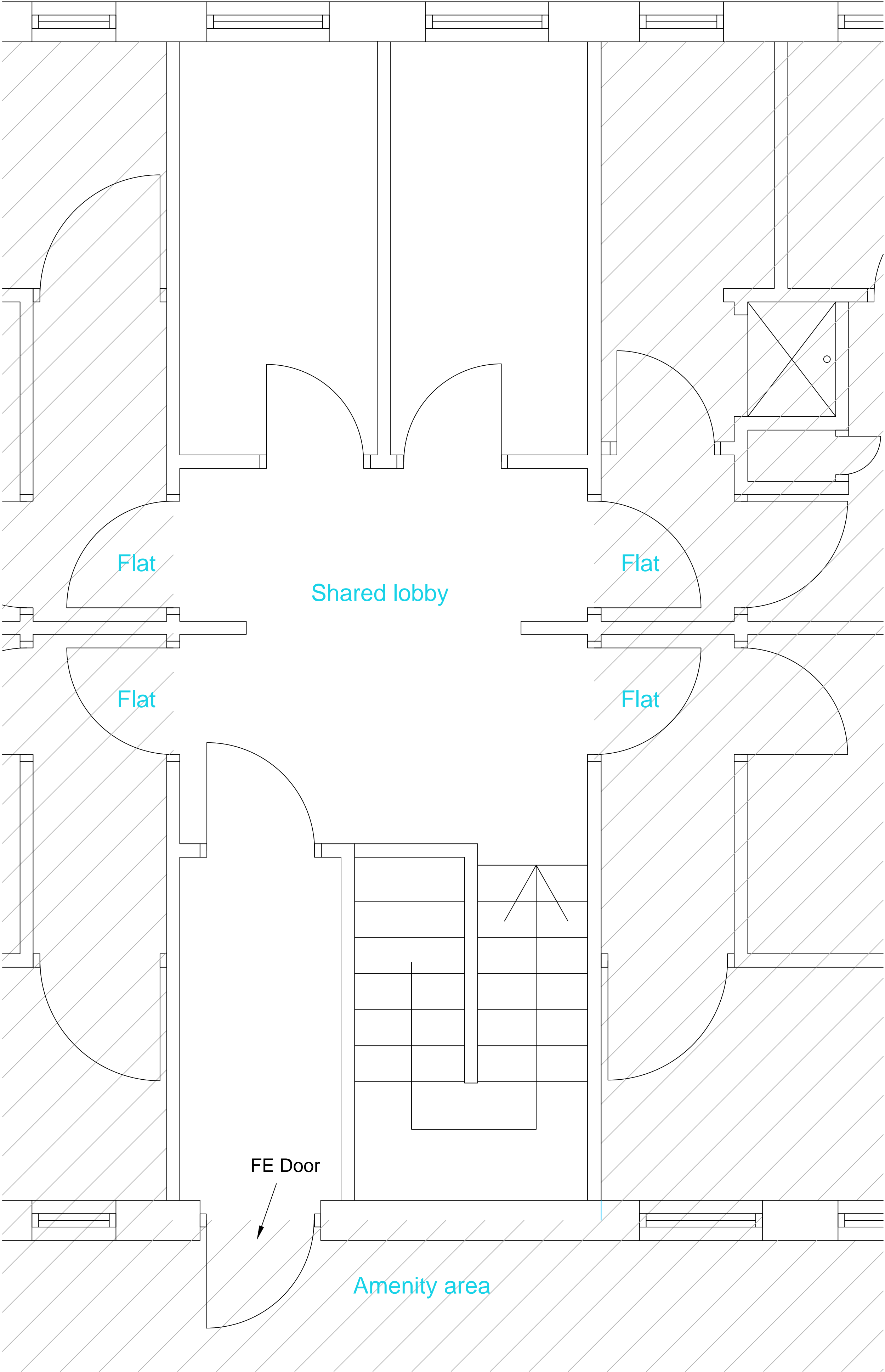


1 Existing Ground Floor Plan
1:20

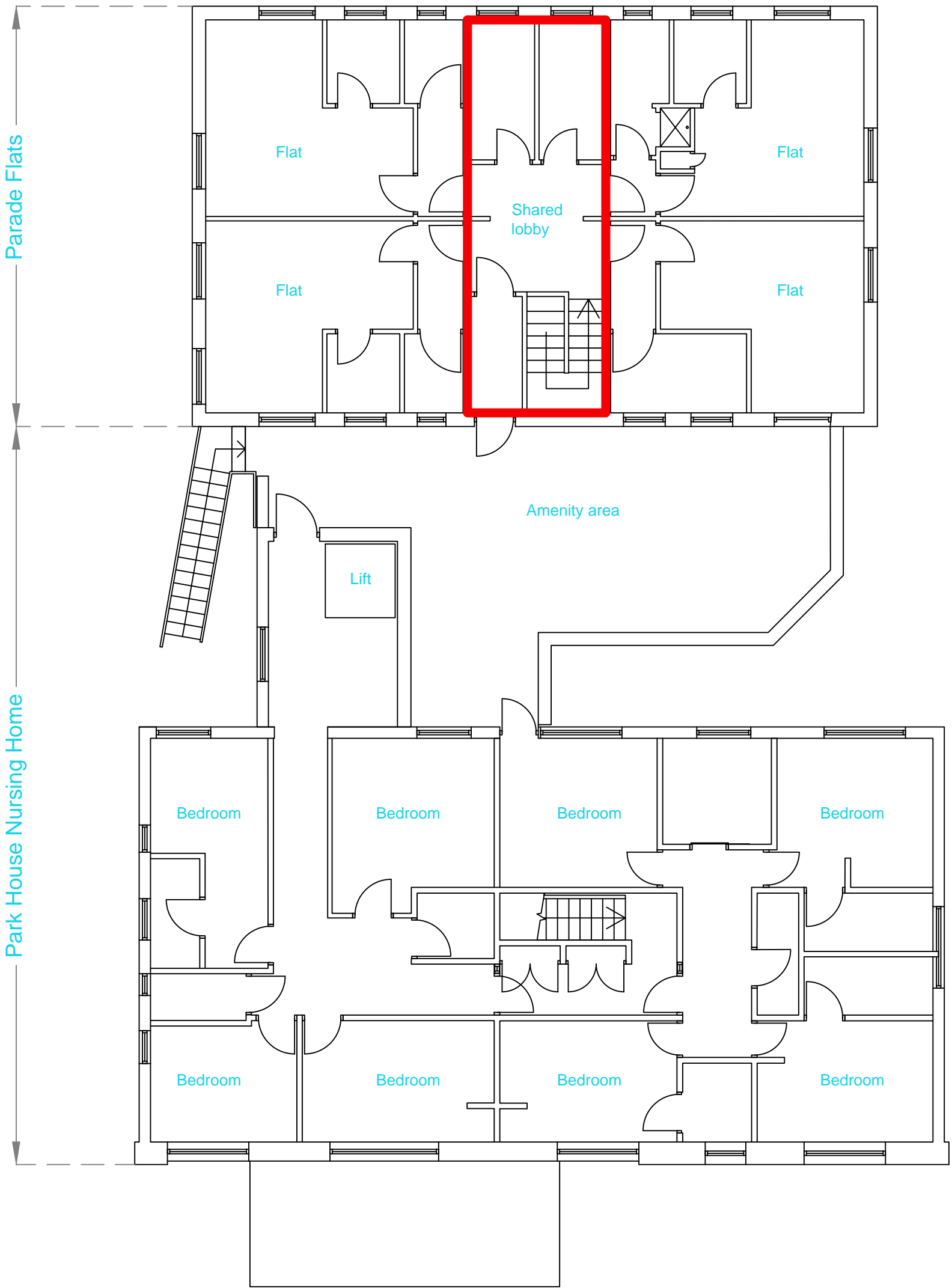


2 Existing Ground Floor Plan
1:100

<div>Currie & Brown</div> <div>Poseidon House, Neptune Park, Maxwell Road, Plymouth, PL4 0SN United Kingdom</div> <div>Tel: 01752 273473 Fax: 01752 257755 www.curriebrown.com</div>		
Project		
<div>Parade Flats & Park House</div> <div>New Partition Wall</div>		
Title		
<div>Existing Ground Floor Plan</div>		
Client		
<div>Council of the Isles</div> <div>of Scilly</div>		
Date	23.09.2020	Drawn AH
Scale	1:100 & 1:20	Checked TH
Drwg No.		Rev
PL____/01		
Do not scale from this drawing, check all dimensions This drawing is copyright		

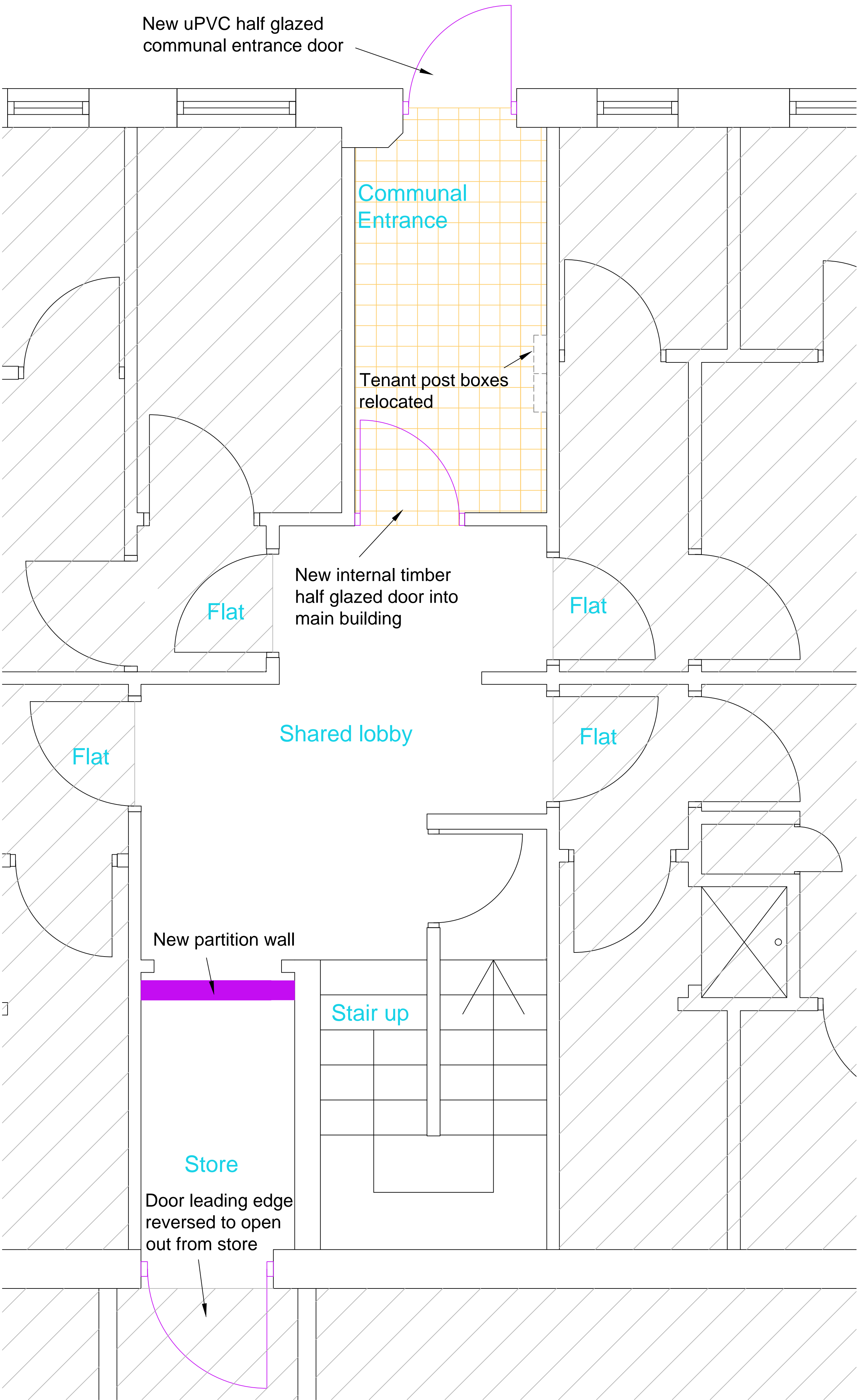


1 Existing First Floor Plan
1:20



2 Existing First Floor Plan
1:100

<div>Currie & Brown</div> <div>Poseidon House, Neptune Park, Maxwell Road, Plymouth, PL4 0SN United Kingdom</div> <div>Tel: 01752 273473 Fax: 01752 257755 www.curriebrown.com</div>		
Project	Parade Flats & Park House New Partition Wall	
Title	Existing First Floor Plan	
Client	Council of the Isles of Scilly	
Date	23.09.2020	Drawn AH
Scale	1:100 & 1:20	Checked TH
Drwg No.	PL____/02	
Rev		
Do not scale from this drawing, check all dimensions This drawing is copyright		



New Vinyl Flooring;
Vinyl flooring to be approved by the CA prior to ordering.



New Partition Wall;
Concrete block partition with plaster skim and painted finish on each side, colour to match surroundings.

NOTES;
Parade Flats Communal Entrance

- Box in services with 15mm ply.
- Remove and dispose of all tiling and associated grouting.
- Remove and dispose of fitted worktop with integrated sink and associated pipework.
- Install new vinyl floor covering.
- Replace main entrance door with new uPVC half-glazed door with a key lock on external and thumb turn on internal side. Entrance to have minimum effective clear width of 850mm.
- Replace Internal timber door into shared lobby with timber half-glazed door. Door to have minimum effective clear width of 750mm
- Tenant post boxes to be relocated into communal entrance circulation, exact position TBC.
- Allow to prepare the walls and apply a backing coat (British Gypsum Thistle Bonding Coat) or similar approved product and skim finish with a plaster mix (British Gypsum Thistle Multi Finish) or similar approved product.
- Apply a mist coat to seal new plaster and allow to sufficiently dry.
- Apply 1nr coat of Dulux Trade Undercoat Paint White or similar approved product.
- Apply 2nr coats of Dulux Trade Matt Emulsion - Colour TBC
- To all timber elements, allow to sand and prepare and apply 2nr coats of Dulux Trade Satin Wood paint or similar approved product.

Store Room Created at Circulation Link

- New block partition wall to block off access to Park House via Parade Flats. Store room created on Park house side.
- Door into store on Park House side to have leading edge reversed to open outwards from the store to increase useable space.

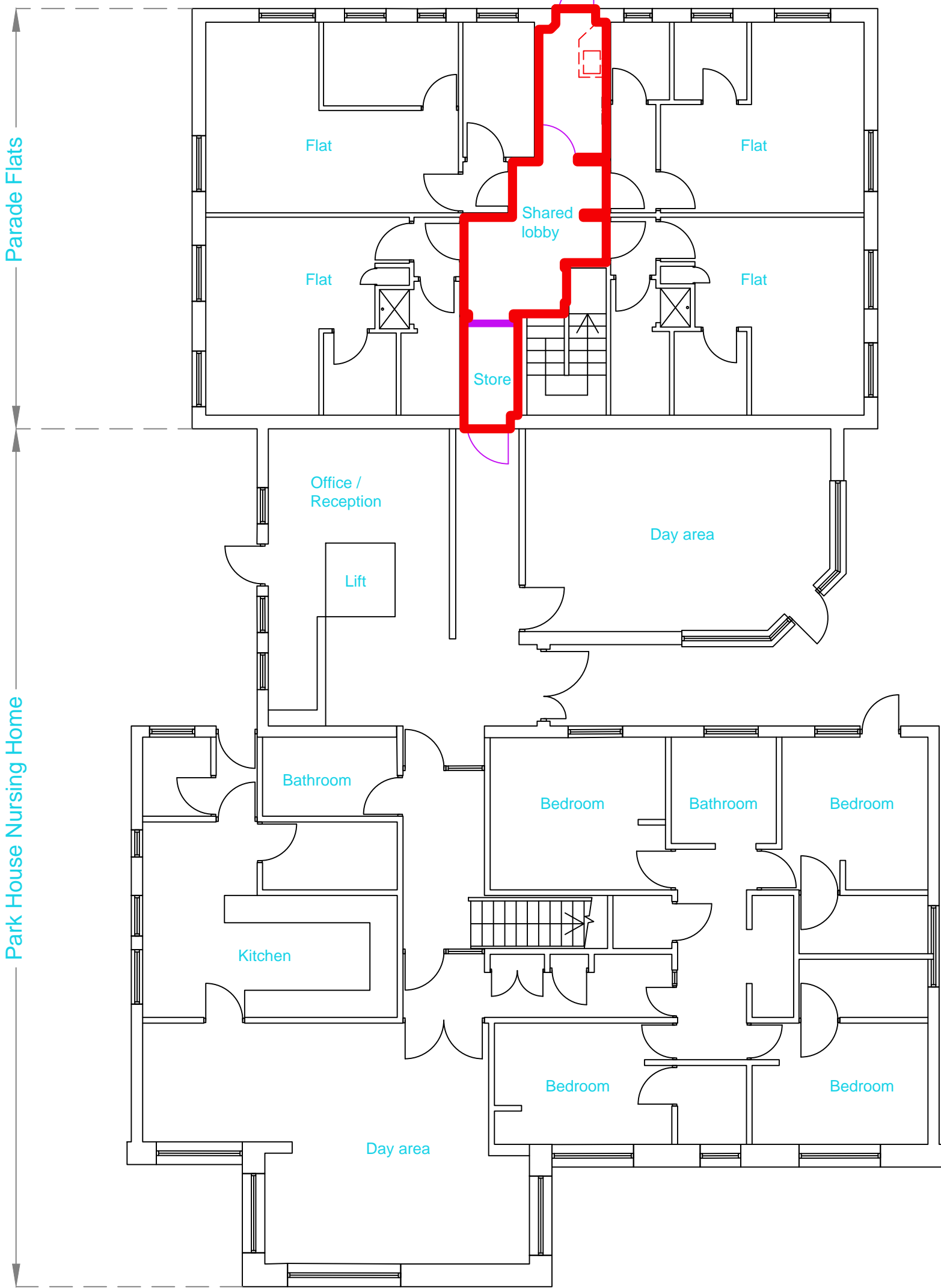
General

- To all common parts, allow to fill all redundant holes, repair all painted surfaces and decorate with 1nr Dulux Trade undercoat white paint or similar approved base layer and 2nr coats of Dulux Trade Matt Emulsion - colour TBC. To all timber elements, allow to sand and prepare and apply 2nr coats of Dulux Trade Satin Wood paint or similar approved product, colour TBC.
- Allow to dispose of removed fixtures and any trade waste.

Emergency Lighting

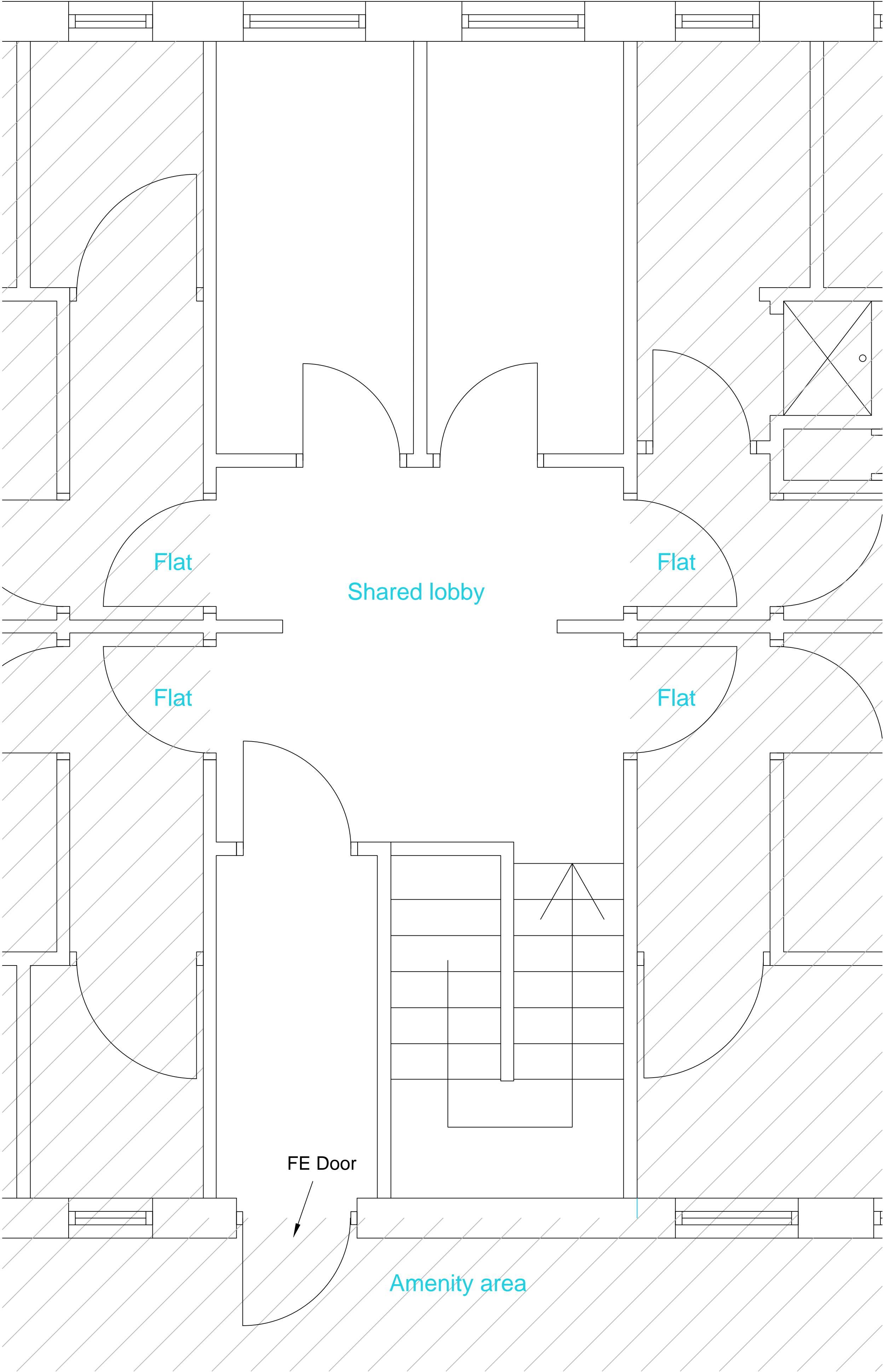
- Internal escape routes including stairway to have electrical emergency lighting system.
- Lighting system to be in accordance with BS 5266, Part 1:2016

1 Proposed Ground Floor Plan
1:20



2 Proposed Ground Floor Plan
1:100

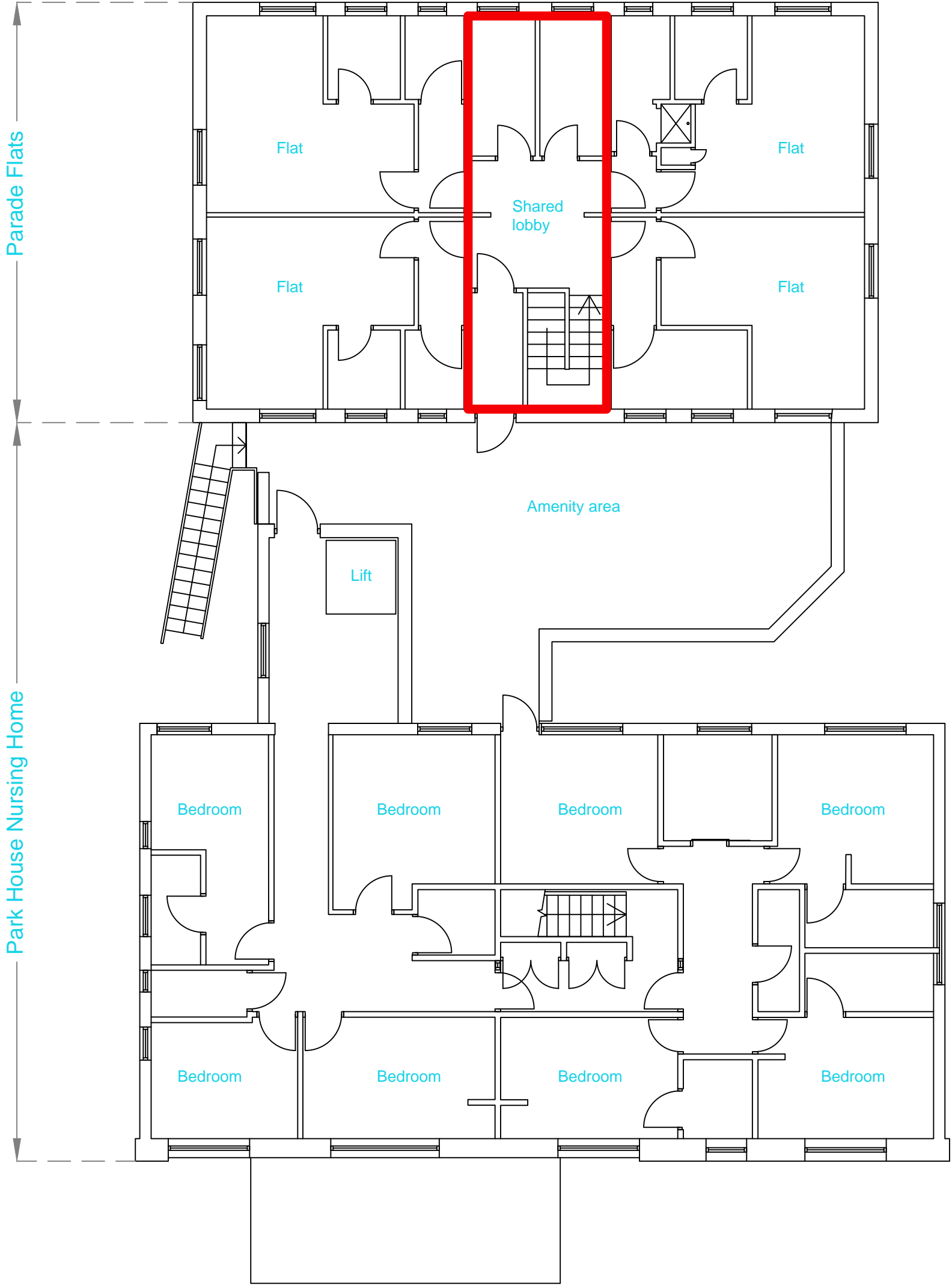
<div>Currie & Brown</div> <div>Poseidon House, Neptune Park, Maxwell Road, Plymouth, PL4 0SN United Kingdom</div> <div>Tel: 01752 273473 Fax: 01752 257755 www.curriebrown.com</div>		
Project <div>Parade Flats & Park House New Partition Wall</div>		
Title <div>Proposed Ground Floor Plan</div>		
Client <div>Council of the Isles of Scilly</div>		
Date	23.09.2020	Drawn AH
Scale	1:100 & 1:20	Checked TH
Drwg No.	PL____/03	
Rev		
Do not scale from this drawing, check all dimensions This drawing is copyright		



- NOTES;**
General
- To all common parts, allow to fill all redundant holes, repair all painted surfaces and decorate with 1nr Dulux Trade undercoat white paint or similar approved base layer and 2nr coats of Dulux Trade Matt Emulsion - colour TBC. To all timber elements, allow to sand and prepare and apply 2nr coats of Dulux Trade Satin Wood paint or similar approved product, colour TBC.
 - Allow to dispose of removed fixtures and any trade waste

- Emergency Lighting**
- Internal escape routes including stairway to have electrical emergency lighting system.
 - Lighting system to be in accordance with BS 5266, Part 1:2016

1 Proposed First Floor Plan
1:20



2 Proposed First Floor Plan
1:100

<div>Currie & Brown</div> <div>Poseidon House, Neptune Park, Maxwell Road, Plymouth, PL4 0SN United Kingdom</div> <div>Tel: 01752 273473 Fax: 01752 257755 www.curriebrown.com</div>		
Project		
<div>Parade Flats & Park House</div> <div>New Partition Wall</div>		
Title		
<div>Proposed First Floor Plan</div>		
Client		
<div>Council of the Isles of Scilly</div>		
Date	23.09.2020	Drawn AH
Scale	1:100 & 1:20	Checked TH
Drwg No.		Rev
PL____/04		
Do not scale from this drawing, check all dimensions This drawing is copyright		