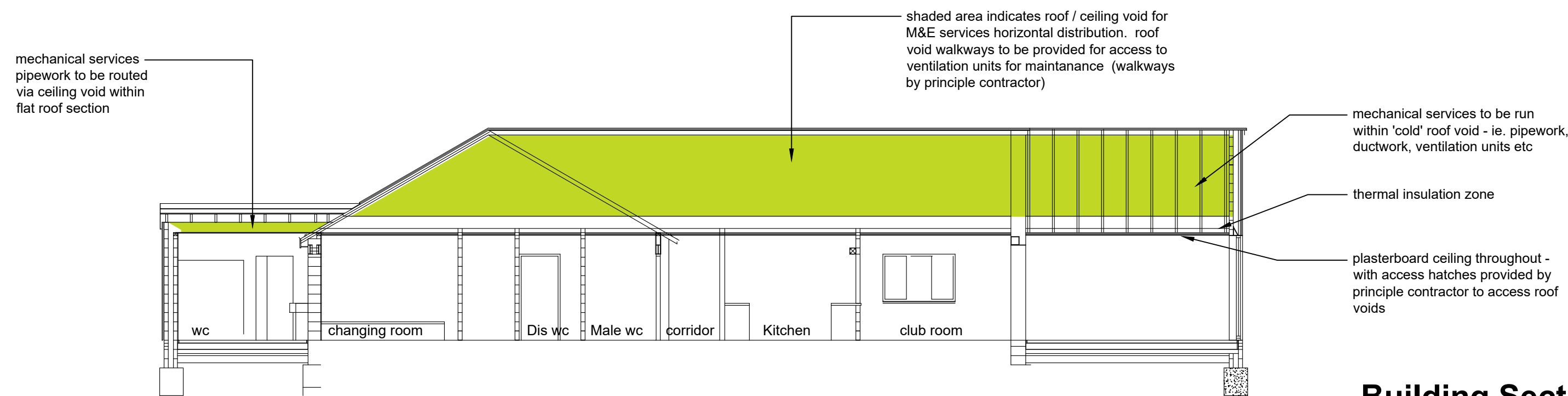
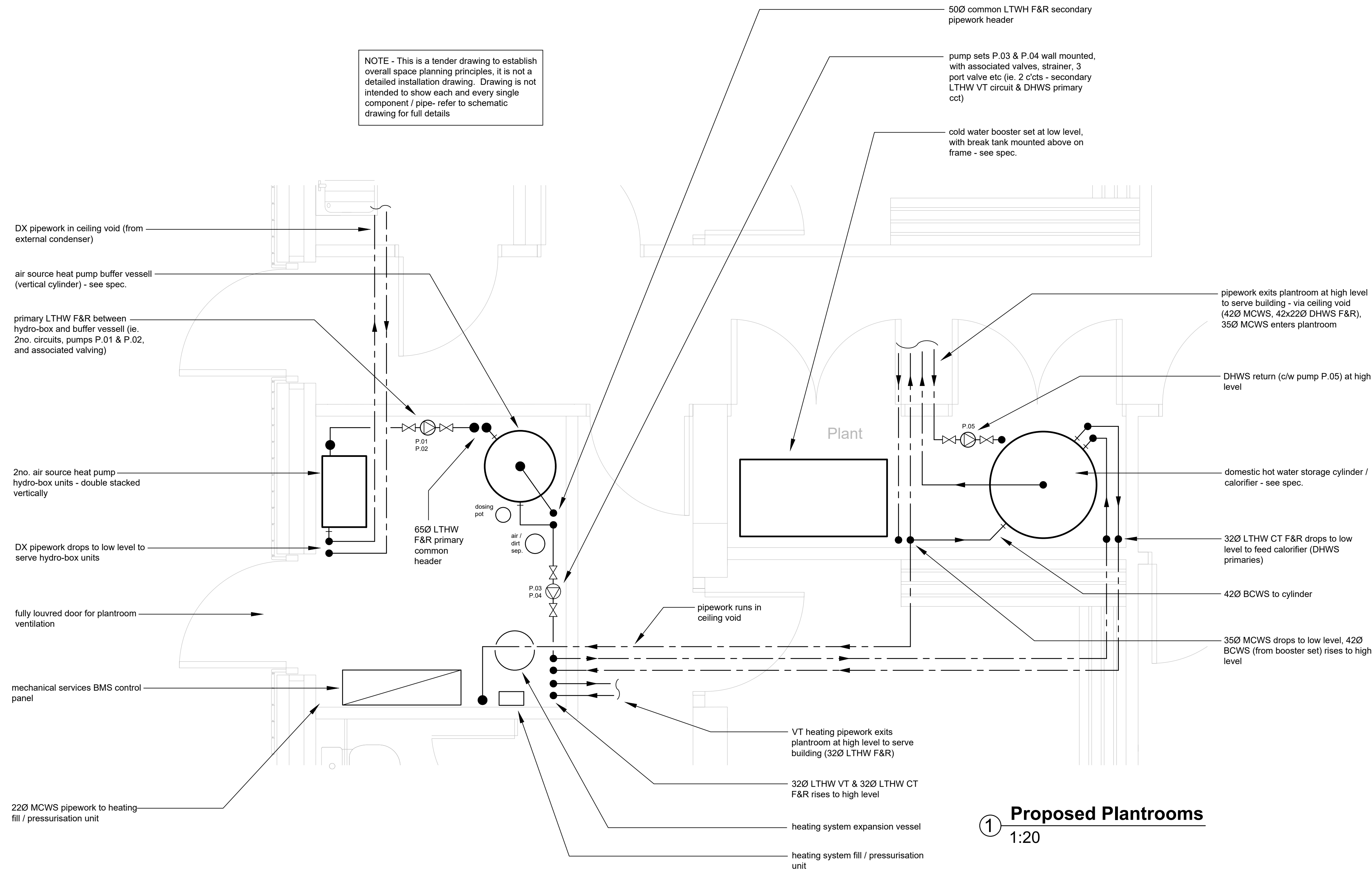


- Notes :
- 1) Drawing to be read in conjunction with specification and schematic drawing.
- 2) Detailed final installation stage coordination and setting out required by Contractor within plantroom, including coordination with electrical contractors equipment



C	Revised Tender Issue - updated to suit latest building layouts	JUL '23	SJA	IRW
B	Tender Issue	JULY '22	SJA	IRW
A	Preliminary Issue	JUN. '22	SJA	IRW
rev.	description	date	drawn	approved

information ☐ approved ☐ tender ☒ contract ☐ construction ☐

Axis Mechanical & Electrical Consulting Engineers

No.8 Poplars Court
Lenton Lane
Nottingham
NG7 2RR
United Kingdom

tel: +44 (0) 115 9791875
fax: +44 (0) 115 9249179
email: mail@axisconsult.co.uk
web: www.axisconsult.co.uk



client

SAWTRY PARISH COUNCIL

project

GREEN FIELD SPORTS FIELD
SAWTRY, HUNTINGDON

drawing

PROPOSED PLANTROOM / SECTION
MECHANICAL SERVICES

drawn	approved	date	scale
SJA	IRW	JUNE '22	1:50 @ A1

drawing ref.	revision
AX1937-M-004	C