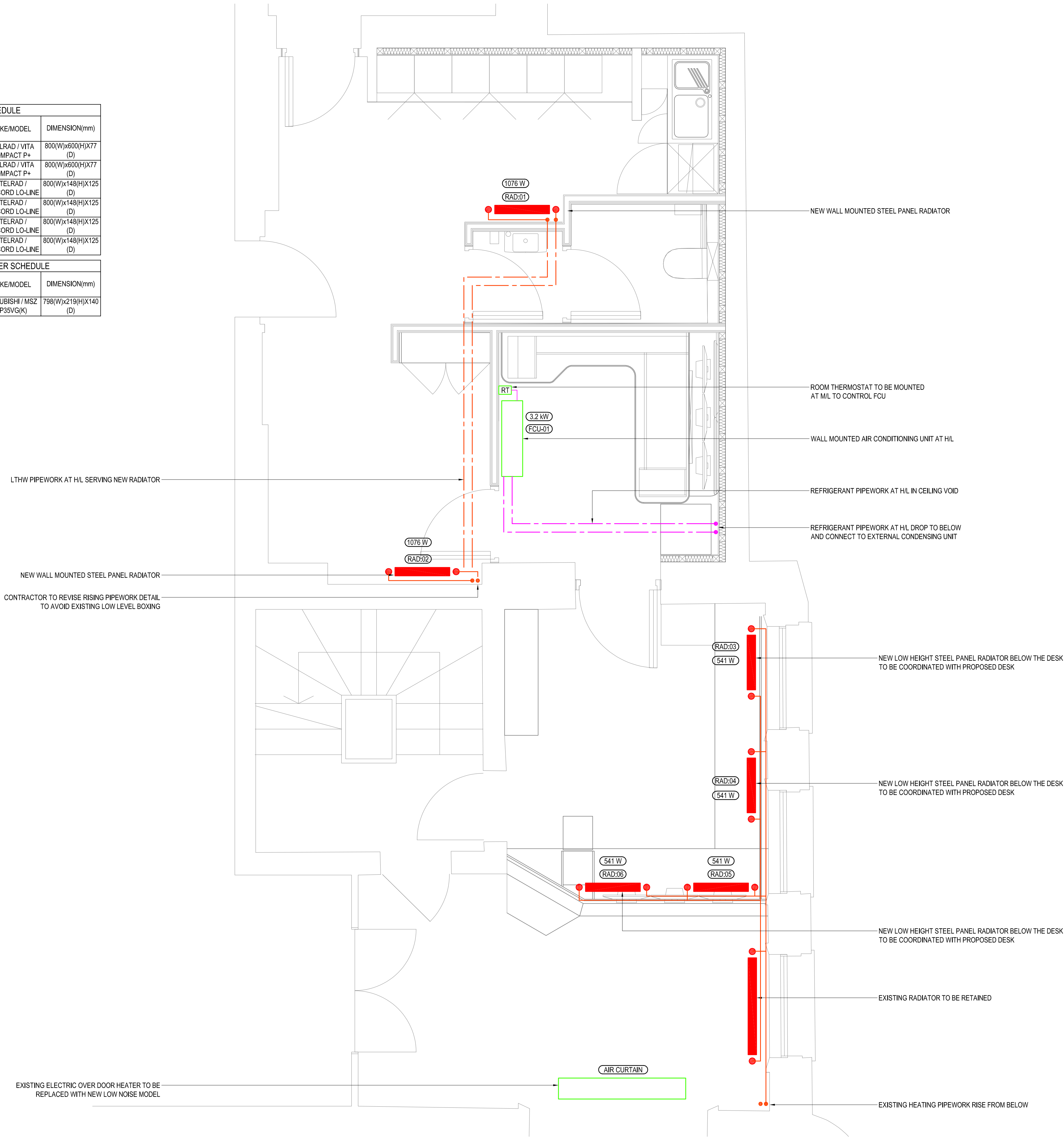


RADIATOR SCHEDULE			
RADIATOR	HEAT OUTPUT (kW)	MAKE/MODEL	DIMENSION(mm)
R.01	1076	STELRAD / VITA COMPACT P+	800(W)x600(H)x77 (D)
R.02	1076	STELRAD / VITA COMPACT P+	800(W)x600(H)x77 (D)
R.03	541	STELRAD / CONCORD LO-LINE	800(W)x148(H)x125 (D)
R.04	541	STELRAD / CONCORD LO-LINE	800(W)x148(H)x125 (D)
R.05	541	STELRAD / CONCORD LO-LINE	800(W)x148(H)x125 (D)
R.06	541	STELRAD / CONCORD LO-LINE	800(W)x148(H)x125 (D)

INDOOR AIR CONDITIONER SCHEDULE			
REF NO	OUTPUT (kW)	MAKE/MODEL	DIMENSION(mm)
FCU.01	3.28/3.26	MTSUSHI / MSZ AP35VG(K)	798(W)x219(H)x140 (D)



NOTES

- DO NOT SCALE FROM THIS DRAWING. ALL DIMENSIONS INDICATED ARE IN MILLIMETRES
- DRAWING TO BE READ IN CONJUNCTION WITH SPECIFICATION, DOCUMENTATION, DRAWINGS & ALL RELEVANT BRITISH STANDARD DOCUMENTS
- THE HEATING INSTALLATION SHALL COMPLY WITH THE REQUIREMENTS OF BS EN 12828:2012, BS EN 12831:2017 AND THE BUILDING REGULATIONS 2010.
- ALL FITTINGS, PIPEWORK, PLANT & EQUIPMENT TO BE INSTALLED, REGULATED & TESTED IN ACCORDANCE WITH THE MANUFACTURERS PRINTED INSTRUCTIONS.
- ALL HIGH POINTS IN SYSTEM TO INCLUDE AUTOMATIC AIR VALVE & ALL LOW POINTS INCLUDE A DRAIN OFF COCK.
- ALL PIPEWORK TO BE ADEQUATELY SUPPORTED THROUGHOUT ITS LENGTH.
- ALL PIPES PASSING THROUGH FIRE STOP BARRIERS TO BE SLEEVED BEYOND THE BARRIER TO A MINIMUM LENGTH OF 300mm WITH BARRIER FIRE STOP MATERIAL.
- ALL FINAL CONNECTIONS TO TOWEL RAILS / RADIATORS TO BE 15mmØ STAINLESS STEEL OR CHROMED COPPER UNLESS OTHERWISE STATED.
- ALL PIPEWORK WITHIN NON ACCESSIBLE CEILINGS & WITHIN FLOOR TRENCHES TO BE FULLY WELDED/BRAZED.
- UNDERFLOOR HEATING SPECIALIST TO CONFIRM WITH ARCHITECT / INTERIOR DESIGNER TOG RATINGS OF ALL FLOOR FINISHES PRIOR TO INSTALLATION TO ACHIEVE HEATING OUTPUTS.

LEGEND

- LTHW RADIATOR
- FAN COIL UNIT
- RADIATOR REFERENCE
- FAN COIL UNIT REFERENCE
- ROOM THERMOSTAT
- LTHW PIPEWORK
- REFRIGERANT PIPEWORK
- PIPEWORK AT LOW LEVEL
- PIPEWORK WITHIN FLOOR VOID
- PIPEWORK WITHIN CEILING VOID

P03	UPDATED TENDER ISSUE	SM	RL	RL	22.10.21
P02	TENDER ISSUE	SM	RL	RL	15.10.21
P01	STAGE 3	SM	RL	RL	01.10.21
REV	DESCRIPTION	BY	CHK	APP	DATE

Project Status:

TENDER



The Multi-disciplinary Engineering Consultancy
Ground Floor, 45 Great Guildford Street
London, SE1 0ES
T: 44 (0) 203 735 5950
E: london@harleyhaddow.com
Edinburgh | London | Glasgow
harleyhaddow.com
Association for Consultancy and Engineering Member Firm

Project: 307685

HORNIMAN MUSEUM STAFF RECEPTION & REST AREA REFURBISHMENT

Drawing Title:

LEVEL 1 HEATING & COOLING LAYOUT

Scale @ A1 1:25	Date OCT 2021	Engineer RL
Drawing No. 307685-HAH-ZZ-01-DR-M-05610	Revision P03	