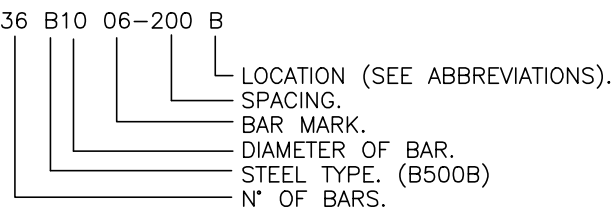


HEALTH & SAFETY: SIGNIFICANT RISKS/SPECIFIC METHODS OF CONSTRUCTION/FUTURE MAINTENANCE ISSUES.

NOTES.

- THIS DRAWING IS TO BE READ IN CONJUNCTION WITH ALL RELEVANT ARCHITECTS, ENGINEERS, SERVICES AND SPECIALIST DRAWINGS AND THE SPECIFICATION.
- ANY DISCREPANCIES IN DIMENSIONS OR DETAILS ON OR BETWEEN THESE DRAWINGS SHOULD BE DRAWN TO THE ATTENTION OF THE ARCHITECT AND/OR THE ENGINEER IN WRITING FOR CLARIFICATION.
- ALL DIMENSIONS ARE IN MILLIMETRES. ALL LEVELS ARE IN METRES UNLESS NOTED OTHERWISE.
DO NOT SCALE THIS DRAWING.
- CONCRETE FOR RETAINING WALLS SHOULD CONFORM TO BS5500-2 WITH THE FOLLOWING REQUIREMENTS:-
COMPRESSIVE STRENGTH - C28/35
MAX. AGGREGATE SIZE - 20mm
CHLORIDE CLASS - CL 0.40
CONSISTENCE CLASS - S3
MAX. WATER/CEMENT RATIO - 0.60
MIN. CEMENT OR COMBINATION CONTENT - 280kg/m³
CEMENT OR COMBINATION GROUP - CEM 1.IIA, IIB or III
NOMINAL COVER TO REINFORCEMENT - 35
(EXCEPT WHERE NOTED OTHERWISE)
- WHERE REQUIRED IN ACCORDANCE WITH THE CONSTRUCTION PRODUCTS REGULATIONS (CPR), CEMENT, REINFORCEMENT, PRECAST CONCRETE ELEMENTS & OTHER CONCRETE RELATED PRODUCTS, SHALL CONFORM TO THE SPECIFIED CRITERIA OF THE CPR AND TO BE CE MARKED ACCORDINGLY.
- CONCRETE SHALL BE WELL COMPACTED BY MEANS OF A MECHANICAL VIBRATOR.
- REINFORCEMENT TO BE GRADES B500B OR B500C TO BS4449
- REINFORCEMENT LISTED ON BENDING SCHEDULE No. 69010-40-01 to 04
- UNLESS STATED OTHERWISE COVER TO ALL REINFORCEMENT TO BE 40mm. MINIMUM.
- REINFORCEMENT CALLED UP AS FOLLOWS :-



- ABBREVIATION:
T1 - HIGHEST TOP LAYER.
T2 - LOWEST TOP LAYER.
B1 - LOWER BOTTOM LAYER.
B2 - HIGHER BOTTOM LAYER.
N1 - NEAR OUTER LAYER.
N2 - NEAR SECOND LAYER.
F1 - FAR OUTER LAYER.
F2 - FAR SECOND LAYER.
ABR - ALTERNATE BARS REVERSED
AP - ALTERNATELY PLACED.
S - STAGGERED.
AS - ALTERNATELY STAGGERED.
- MINIMUM LAP TO REINFORCEMENT TO BE 38 x BAR DIAMETER UNLESS NOTED OTHERWISE.
- MAIN CONTRACTOR TO BE RESPONSIBLE FOR ALL SPACERS AND CHAIRS NECESSARY TO SUPPORT THE REINFORCEMENT TO ENSURE THAT THE CORRECT COVER IS MAINTAINED. SPACER/SPACER STRIPS SHOULD BE INSTALLED IN ACCORDANCE WITH BS 7973-1:2001 'SPACERS AND CHAIRS FOR STEEL REINFORCEMENT'.
- THE CONTRACTOR IS TO GIVE THE ENGINEER TWENTY FOUR HOURS NOTICE OF ALL CONCRETING SO THAT AN INSPECTION OF THE WORK MAY BE MADE PRIOR TO PLACING.

TENDER

25th. OCTOBER 2017

THIS DRAWING SUPERSEDES EARLIER ISSUES OF THIS DRAWING WHICH SHOULD BE DESTROYED.

WALL JOINT DETAIL ADDED. ISSUED FOR TENDER.	T2	IF	28/06/17
ISSUED FOR TENDER.	T1	IF	29/06/17
PRELIMINARY ISSUE FOR COMMENT.	P1	IF	23/06/17
Revision	Suff	App'd	Date

Project

SWANAGE BOAT PARK
PEVERILL ROAD
SWANAGE

Drawing Title

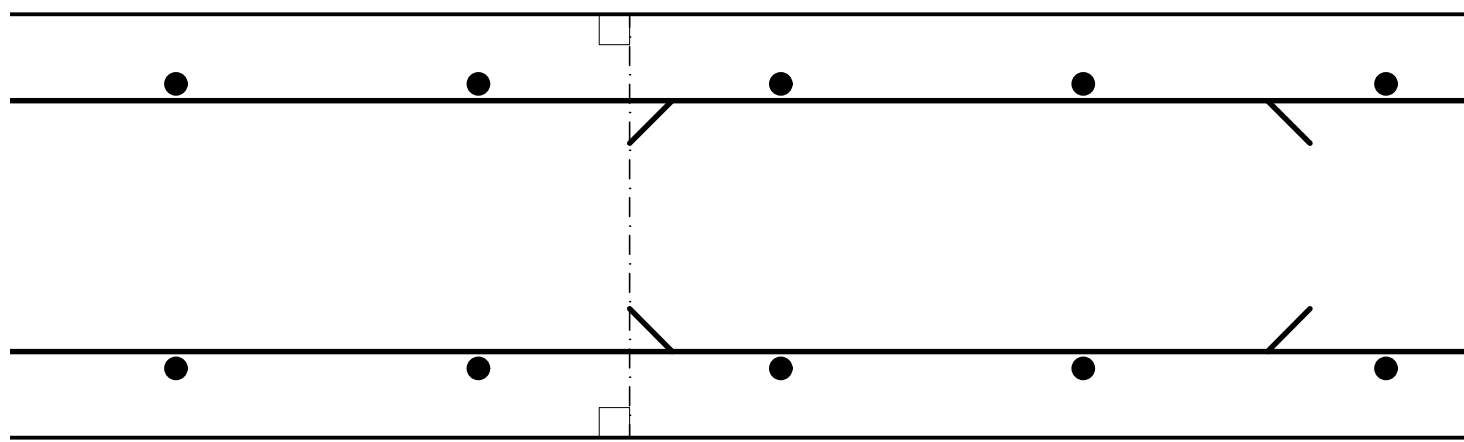
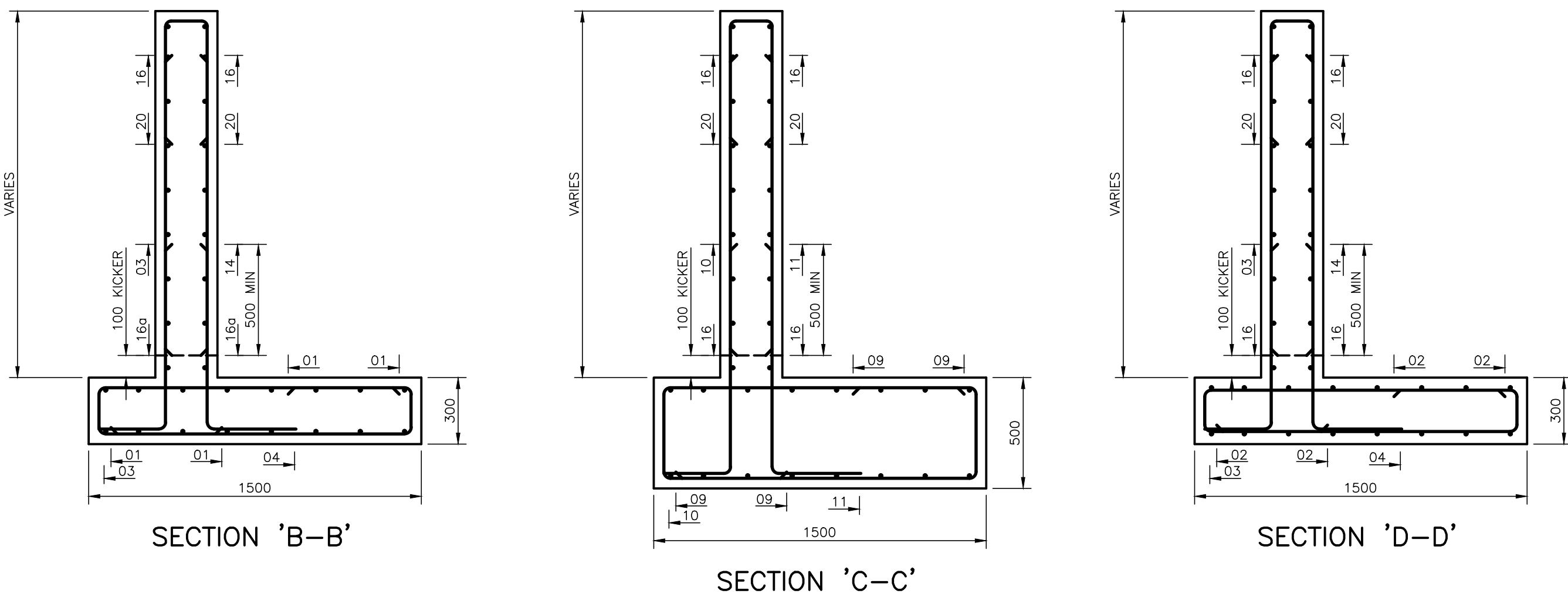
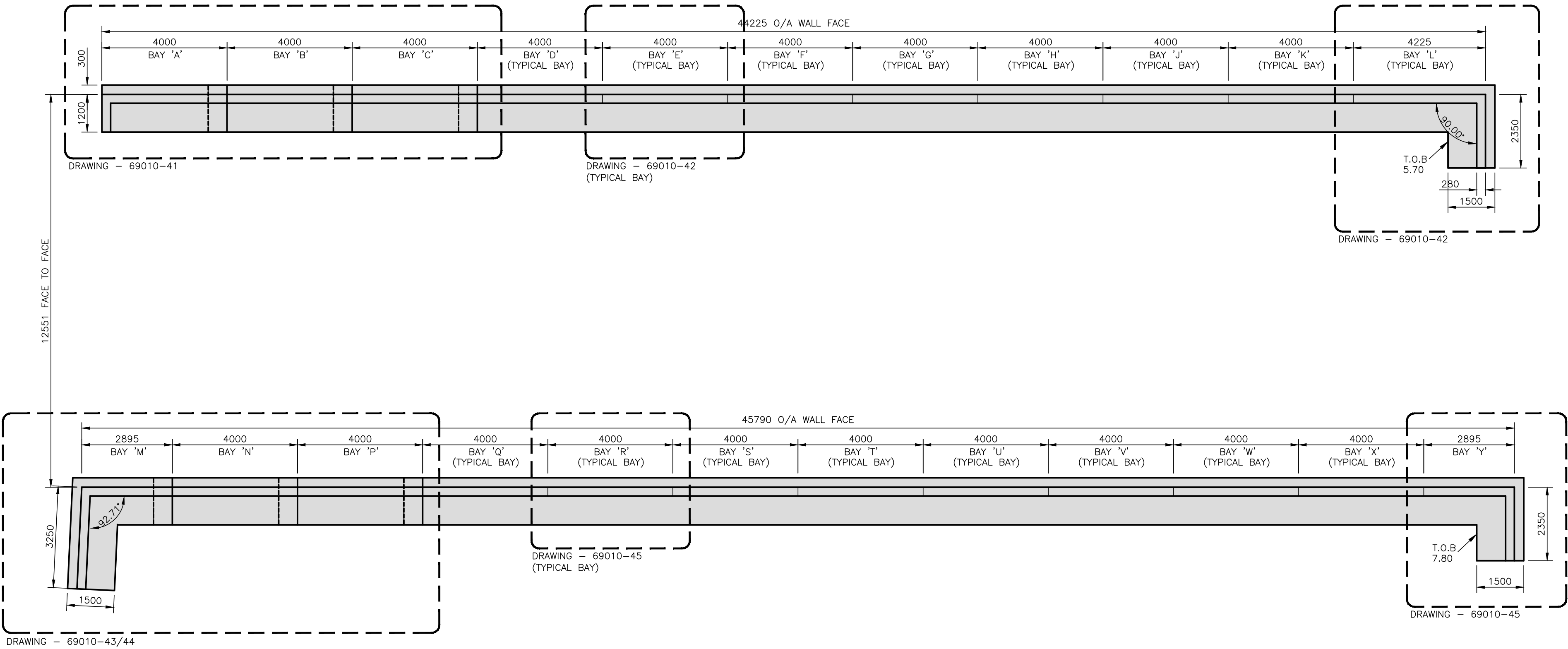
REPLACEMENT RETAINING WALLS
REINFORCEMENT
KEY PLAN AND TYPICAL SECTIONS

SMITH FOSTER
Consulting Civil and Structural Engineers

Suite 8, Branksome Park House
Branksome Business Park
Bourne Valley Road
Poole BH12 1ED
Tel +44 (0) 1202 540888
Fax +44 (0) 1202 540044
Website: www.smithfooster.com
e-mail eng@smithfooster.com

Smith Foster Limited Registered in England No. 4085293
Registered Office: 93 Western Road, Tiling HP23 4BN

Drawn	Date	Checked	Date
BH	JUN 17	IF	JUN 17
Scale	1:20 @A1		
Drawing Number	69010-40		Rev T2



TYPICAL WALL JOINT (1:5)