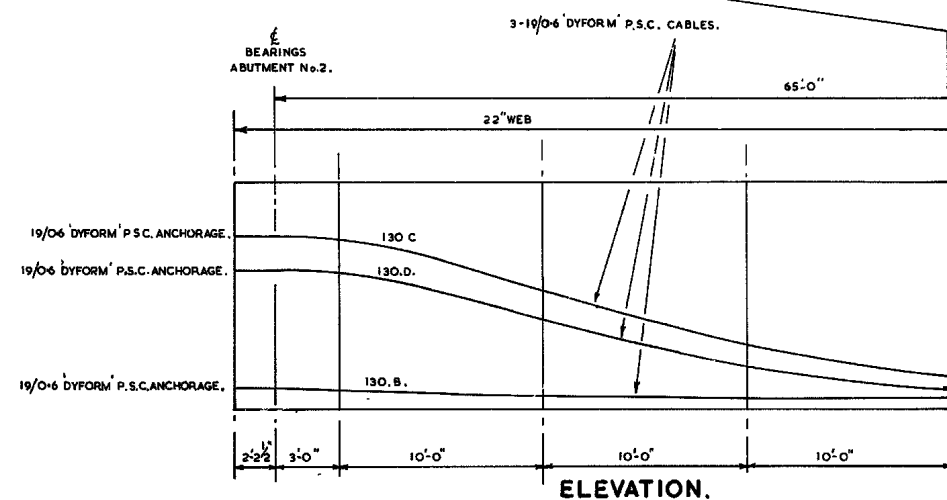


**ELEVATION.**

1'-5 1/2"	11"	7"	6"	6"	8"	1'-4"	2'-10"	2'-11"	4'-9 1/2"	7'-4"	9'-9 1/2"	9'-11 1/2"	9'-9 1/2"	7'-8 1/2"	6'-2"	5'-0"	4'-6"
10 1/2"	7"	6"	6"	6"	6"	10"	1'-5"	2'-4"	4'-2 1/2"	6'-9"	9'-2 1/2"	9'-4 1/2"	9'-2 1/2"	7'-1 1/2"	5'-2"	3'-7"	3'-0"
6"	6"	6"	6"	6"	6"	6"	7"	11 1/2"	1'-10 1/2"	3'-4"	5'-3 1/2"	5'-11"	6'-4"	7'-2"	7'-2 1/2"	7'-2 1/2"	7'-3 1/2"

DIMENSIONS GIVEN ARE HEIGHTS OF CABLE CENTROIDS ABOVE AND PERPENDICULAR TO THE DECK SOFFIT.  
ARROWS INDICATE START OF CABLE CURVES.

ARROWS INDICATE START OF CABLE CURVES.																			
1/2 L	2 1/4 L	3 1/4 L	3 1/2 L	3 1/2 L	3 1/2 L	3 1/2 L	7 1/2 L	0"	0"	0"	0"	3 1/2 R	0"	0"	0"	2 3/8 L	0"	0"	0"
2 3/8 R	3 1/4 R	3 1/2 R	3 1/2 R	3 1/2 R	3 1/2 R	3 1/2 R	2 1/2	5 1/8 R	0"	0"	0"	3 1/2 R	0"	0"	0"	2 3/8 L	0"	0"	0"
3 1/2 L	7 L	10 1/2 L	10 1/2 L	10 1/2 L	10 1/2 L	7 L	3 1/2 L	3 1/4 L	2 1/8 L	0"	0"	0"	4 5/8 R	4 5/8 R	4 5/8 R	4 5/8 R	0"	0"	0"
							CABLE 'A'	0"	0"	0"	0"	3 1/2 L	2 3/8 L	2 3/8 L	2 3/8 L	3 1/2 L	3 1/2 L	3 1/2 L	3 1/2 L
							CABLE 'B'	0"	0"	0"	0"	3 1/2 L	2 3/8 L	2 3/8 L	2 3/8 L	3 1/2 R	3 1/2 R	3 1/2 R	R 3 1/2
3/8 Y	2 1/8 Y	3 1/4 Y	3 1/2 Y	3 1/2 Y	2 3/8 Y	3/4 Y	0"	0"	0"	0"	3 1/2 O	0"	0"	0"	2 3/8 Y	0"	0"	0"	
2 1/4 O	3 1/4 O	3 1/2 O	3 1/2 O	3 1/2 O	3 1/2 O	2 3/8 O	1/2 O	0"	0"	0"	0"	3 1/2 O	0"	0"	0"	2 3/8 Y	0"	0"	0"
3 1/2 Y	7 Y	10 1/2 Y	10 1/2 Y	10 1/2 Y	7 Y	3 1/2 Y	3 1/4 Y	2 Y	0"	0"	0"	0"	4 5/8 O	4 5/8 O	4 5/8 O	4 5/8 O	0"	0"	0"
							CABLE 'A'	0"	0"	0"	0"	3 1/2 Y	2 3/8 Y	2 3/8 Y	2 3/8 Y	3 1/2 Y	3 1/2 Y	3 1/2 Y	Y 3 1/2
							CABLE 'B'	0"	0"	0"	0"	3 1/2 Y	2 3/8 Y	2 3/8 Y	2 3/8 Y	3 1/2 O	3 1/2 O	3 1/2 O	O 3 1/2



**ELEVATION.**

HEIGHT ABOVE SOFFIT.	ALL WEBS.	130.C.	8'-0"	8'-0"	7'-10"	5'-6"	3'-0"
		130.D.	6'-5 1/2"	6'-5 1/2"	6'-4"	4'-2"	2'-0"
		130.B.	1'-0"	1'-0"	10'-1 1/2"	7'-1 1/2"	6"

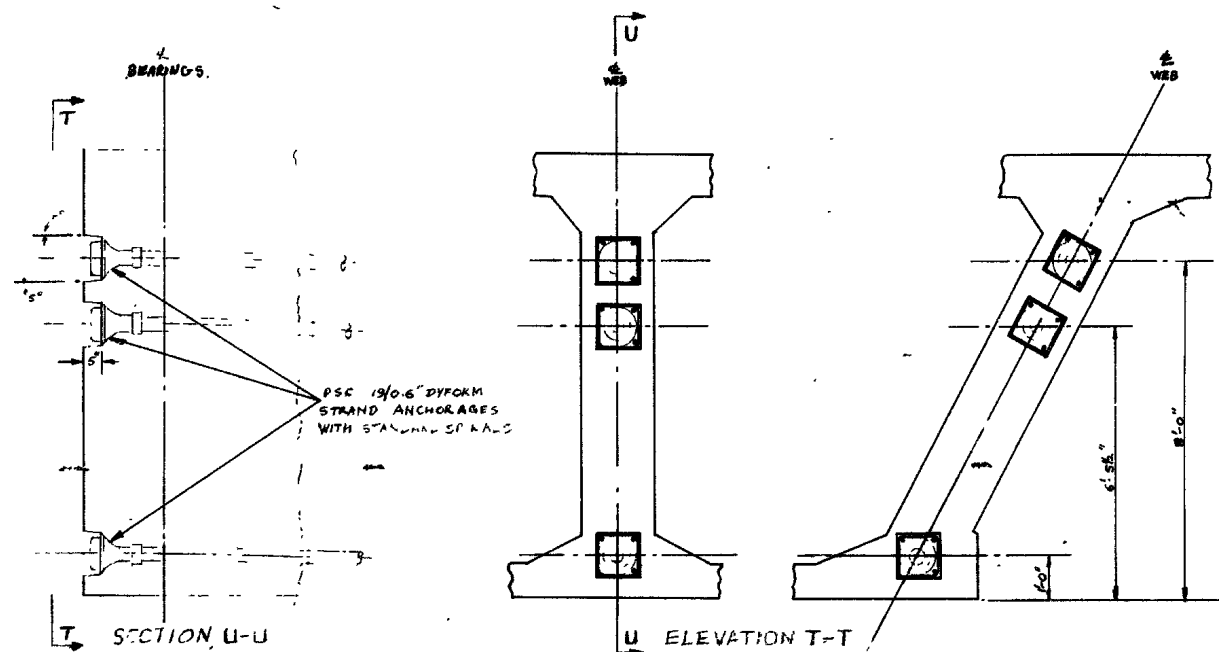
HORIZONTAL OFFSETS FROM C.E. OF WEB	CENTRE WEB	130.C.	0	0	0	0	0
		130.D.	0	0	0	0	0
		130.B.	0	0	0	0	0

HORIZONTAL OFFSETS FROM C.E. OF WEB	OUTER WEB	130.C.	0	0	0	0	0
		130.D.	0	0	0	0	0
		130.B.	0	0	0	0	0

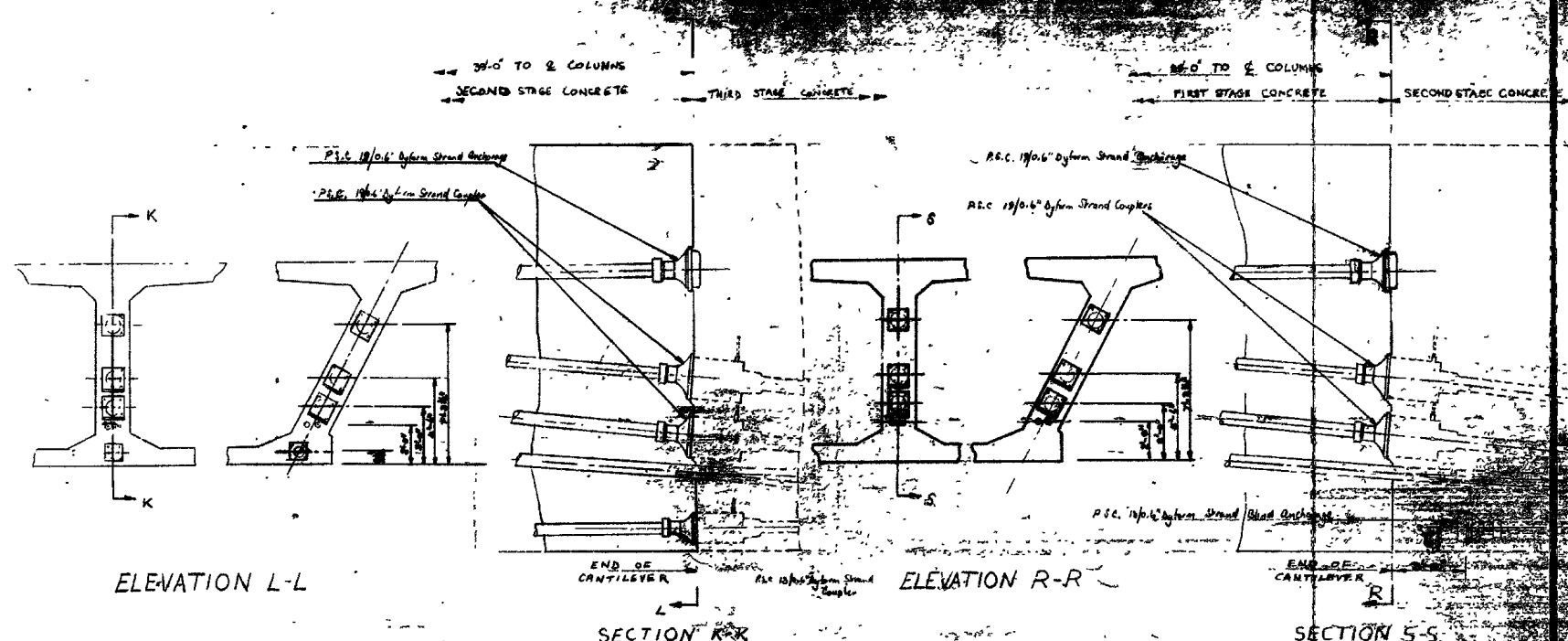
- NOTES:-
- THIS DRAWING TO BE READ IN CONJUNCTION WITH 530/AC5/10-2. AND DRAWINGS LISTED THEREON.
  - NOTES ON CONCRETE & REINFORCEMENT 530/AC10/8-1.
  - CONCRETE IN BOX CLASS 6000/3/4.
  - CABLES 'B', 'C' & 'D'. P.S.C. 'PREYSSI' MONOGROUP 19/0-6 'DYFORM' STRAND SYSTEM.
  - ALL 19/0-6 CABLE SHEATHS NYLON LINED.
  - BEARING DETAILS 530/AC5/10-14.
  - SYMBOLS 'L' & 'R' REFER TO LEFT & RIGHT LOOKING IN THE DIRECTION OF INCREASING CHAINAGE.
  - SYMBOLS 'I' & 'O' REFER TO INWARDS & OUTWARDS.

54592.  
6900 E / 172

DEPARTMENT OF THE ENVIRONMENT. M5. BIRMINGHAM-BRISTOL-EXETER MOTORWAY. GORDANO VALLEY SECTION.	
WYNHOL VIADUCT. UPPER VIADUCT 130'-0" SPAN & 30'-0" CANTILEVER. PRESTRESSING DETAILS.	
FREEMAN FOX & PARTNERS CONSULTING ENGINEERS. LONDON, S.W.1.	SCALE: 1/4" TO 1 FT. DRAWING No. 530/AC5/10-24 JAN. 1973.

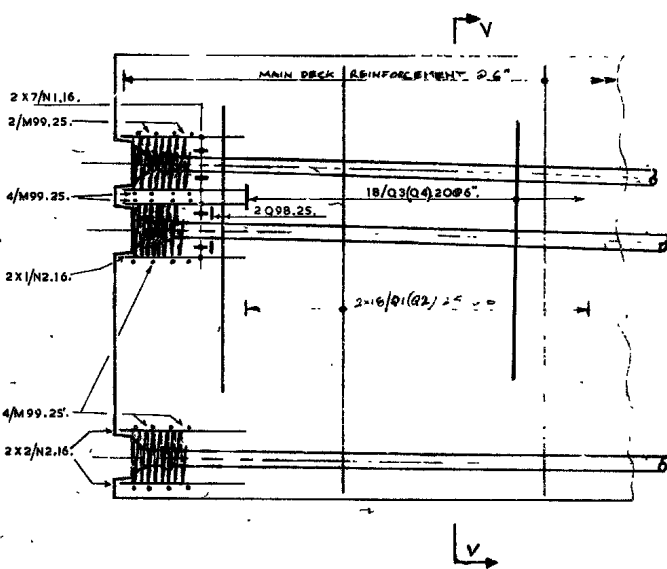


UPPER VIADUCT - ABUTMENT NO.2 END OF 130FT SPAN



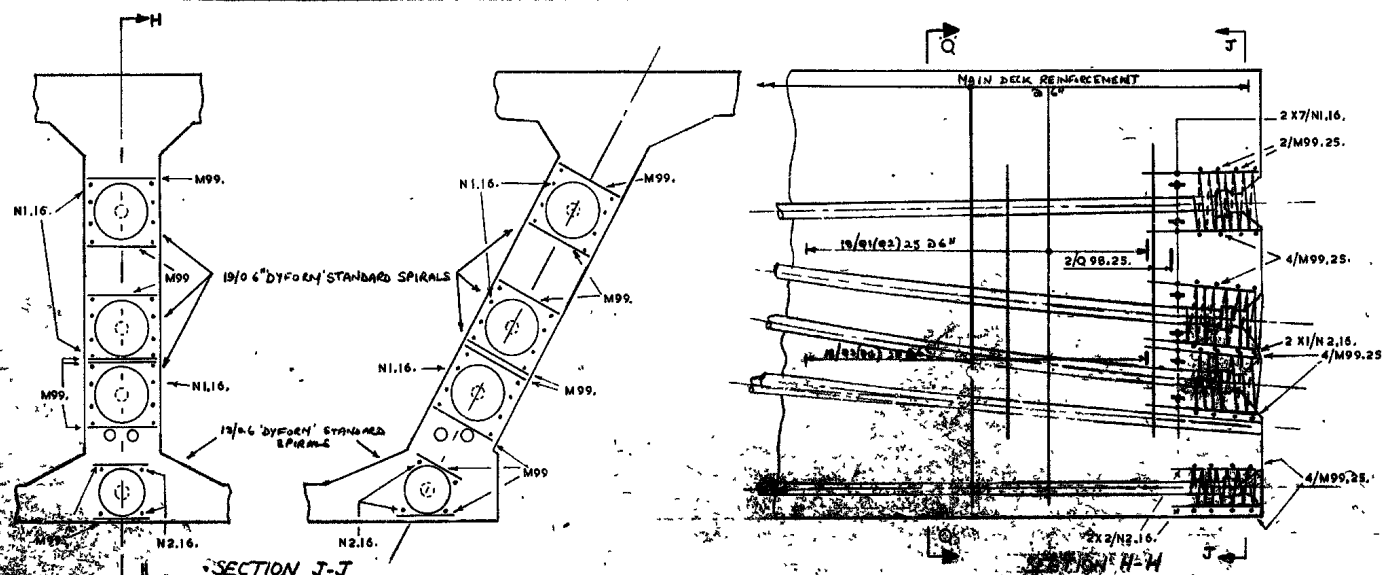
LOWER VIADUCT - END OF 39FT CANTILEVER TO 150FT SPAN

UPPER VIADUCT - END OF 39FT CANTILEVER TO 150FT SPAN



REINFORCEMENT DETAILS AT ABUTMENT END OF 130FT SPAN

REINFORCEMENT DETAILS AT END OF CANTILEVER TO 130FT SPAN



REINFORCEMENT DETAILS AT END OF CANTILEVER TO 150FT SPAN

NOTES:  
FOR DETAILS OF ACCESS HOLES & ASSOCIATED  
ANCHORAGES, SEE DRG. NO. 530/AC/1011 & 1012  
12 IN. OF BARS GIVEN FOR EACH WEB