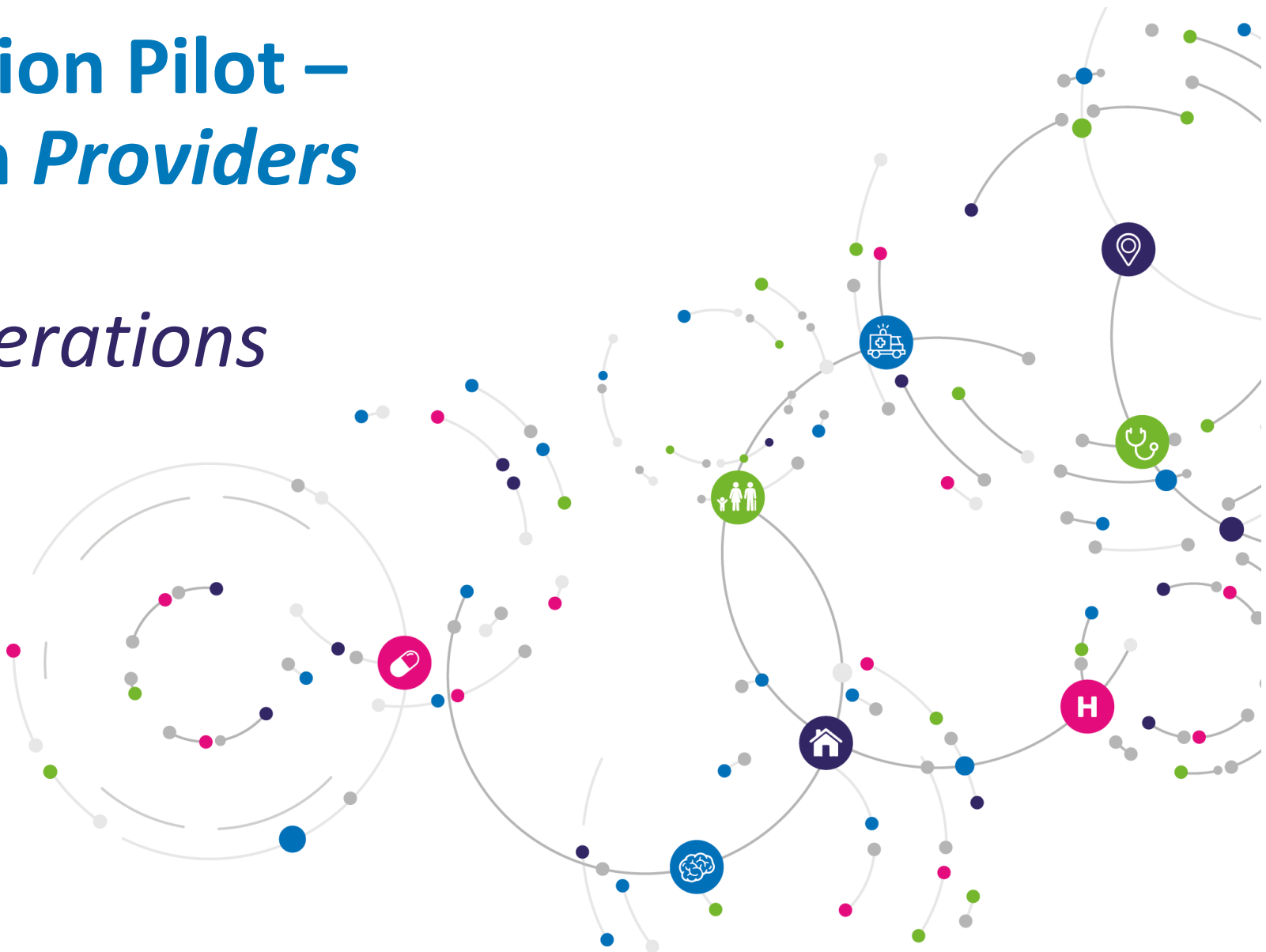


# GRAIL Implementation Pilot – Engagement Launch *Providers*

## *Procurement considerations*

[Camilla Ball](#)

20<sup>th</sup> March 2023

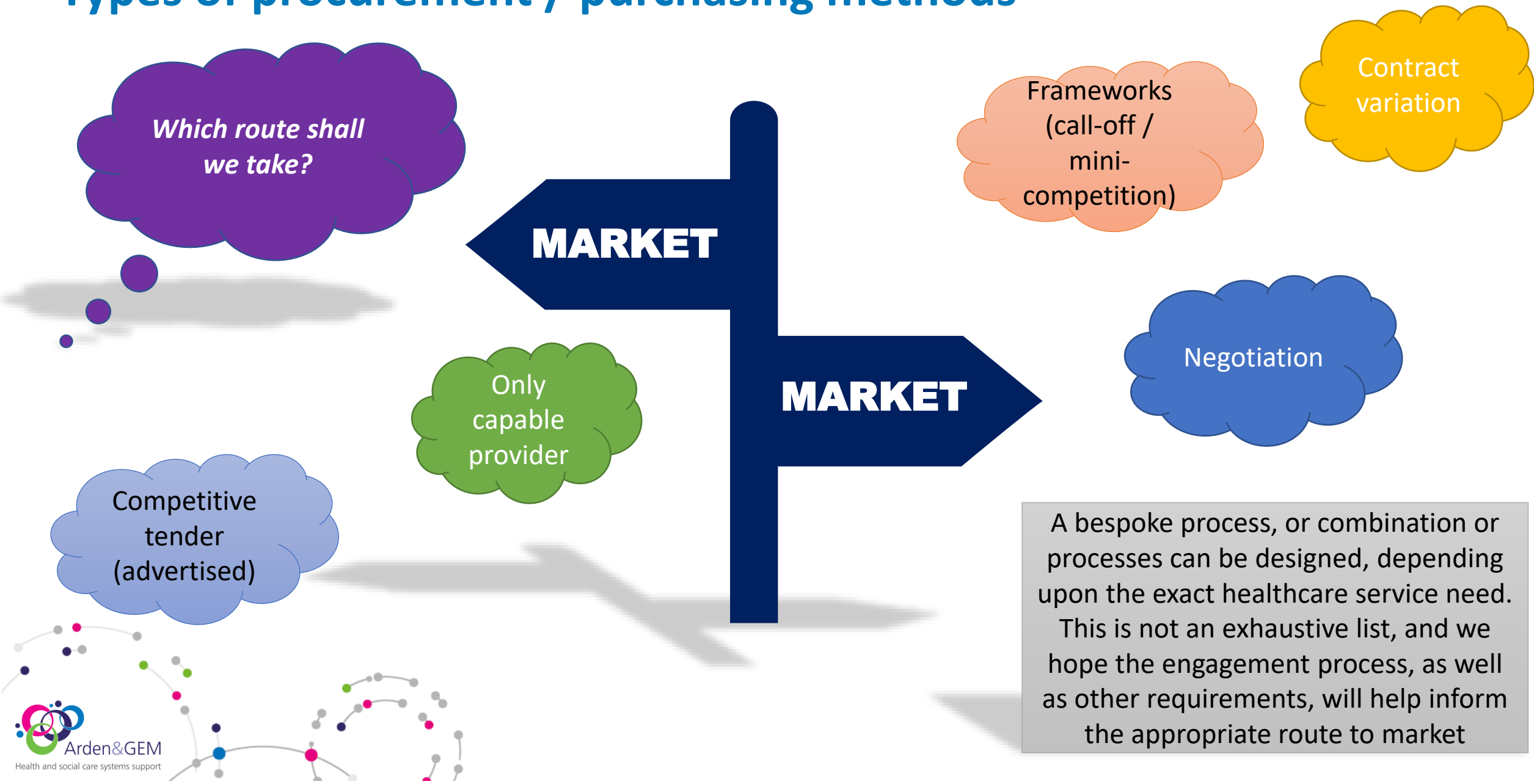


# What is procurement?

- Procurement is... “the act of obtaining or purchasing goods or services”
- Procurement forms part of the commissioning cycle
- [NHS Arden and GEM CSU](#) provide specialist procurement support to commissioners and providers, including stakeholder and market engagement, which forms part of the *designing services* segment



# Types of procurement / purchasing methods



# The engagement process



- As well as the presentations being given to provide updates, we would like to ascertain your expert views
- Whilst we are aiming to get as many viewpoints as possible, to help inform any future processes or service needs, and the contractual documents
- There will be a questionnaire issued to you after this event, which is hosted on MS Forms
  - This feedback will NOT be anonymous and we kindly ask you to include your contact details on your response
  - If you submit a form, and wish to submit another, then please do – the online form should allow you to do this
  - Please include as much detail / evidence as possible, as it's important we are able to justify any decisions we make about the next steps
- *Nothing has been decided yet! We truly want to engage with subject matter experts, to ensure you have the safe space to provide info and feedback, allowing us to eventually make informed recommendations / decisions*

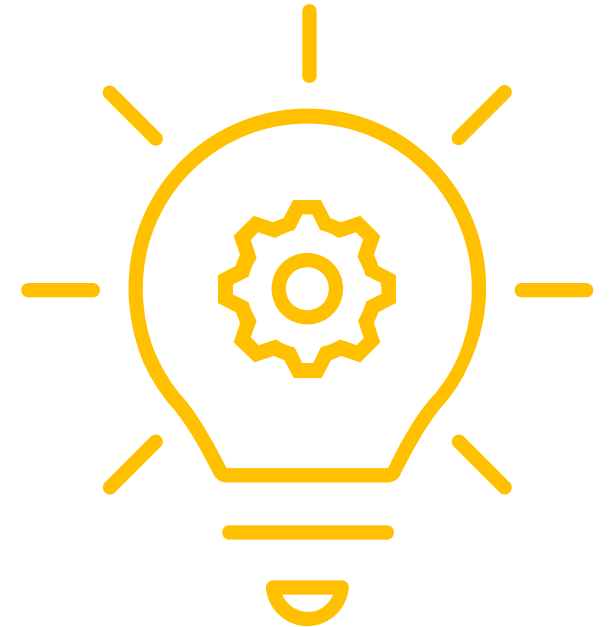
# What we would like to hear your opinions on



- What you currently provide and where
  - An insight into your technical (IT administration) capabilities
  - Your thoughts on the commissioning and contracting process required
  - Risks and issues you can foresee – and mitigations to these
  - Recommendations on finance / method of payment /price
- 
- You are welcome to share non-commercially sensitive information here, verbally or in the chat
  - The survey is available on <https://forms.office.com/e/zkk00YbYsx>
    - Response deadline is **5pm Thursday 6<sup>th</sup> April 2023**



Over to you





Get in touch with us at:



[www.ardengemcss.nhs.uk](http://www.ardengemcss.nhs.uk)



[@ardengem](https://twitter.com/ardengem)



[contact.ardengem@nhs.net](mailto:contact.ardengem@nhs.net)



**Arden&GEM**  
Health and social care systems support