
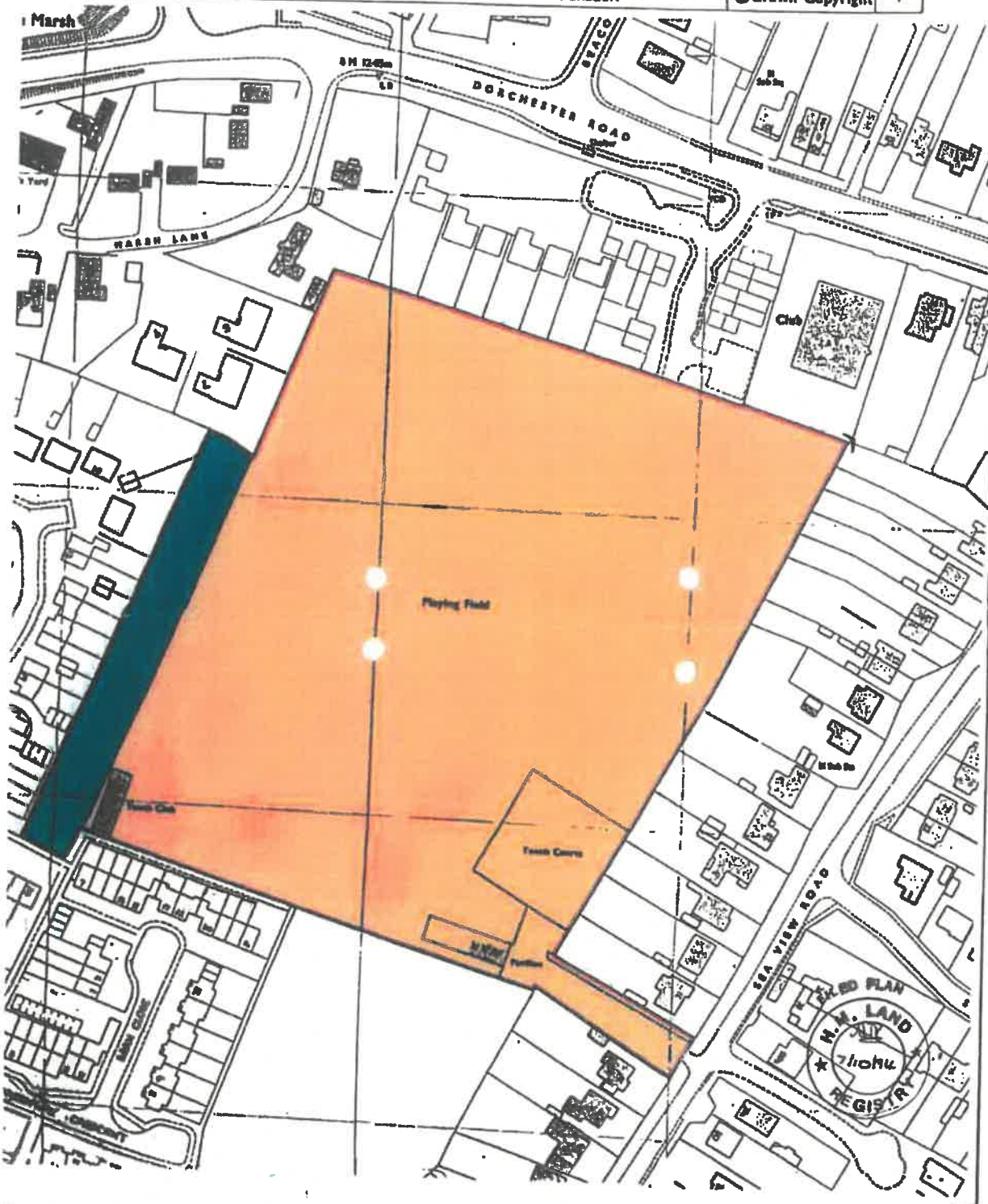


H.M. LAND REGISTRY		TITLE NUMBER DT 178470	
ORDNANCE SURVEY PLAN REFERENCE	SY 9735	Scale 1/1250	
COUNTY DORSET	DISTRICT PURBECK	© Crown Copyright	

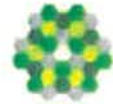


This official copy is issued, and shows the state of this title plan, on 16 June 2009 at 11:38:36.
It is admissible in evidence to the same extent as the original (s.67 Land Registration Act 2002).
This title plan shows the general position, not the exact line, of the boundaries. It may be subject to distortions in scale. Measurements scaled from this plan may not match measurements between the same points on the ground. See Land Registry Public Guide 19 - Title Plans and Boundaries.
This title is dealt with by Land Registry, Weymouth Office.
© Crown Copyright. Produced by Land Registry. Reproduction in whole or in part is prohibited without the prior written permission of Ordnance Survey. Licence Number 100026316.

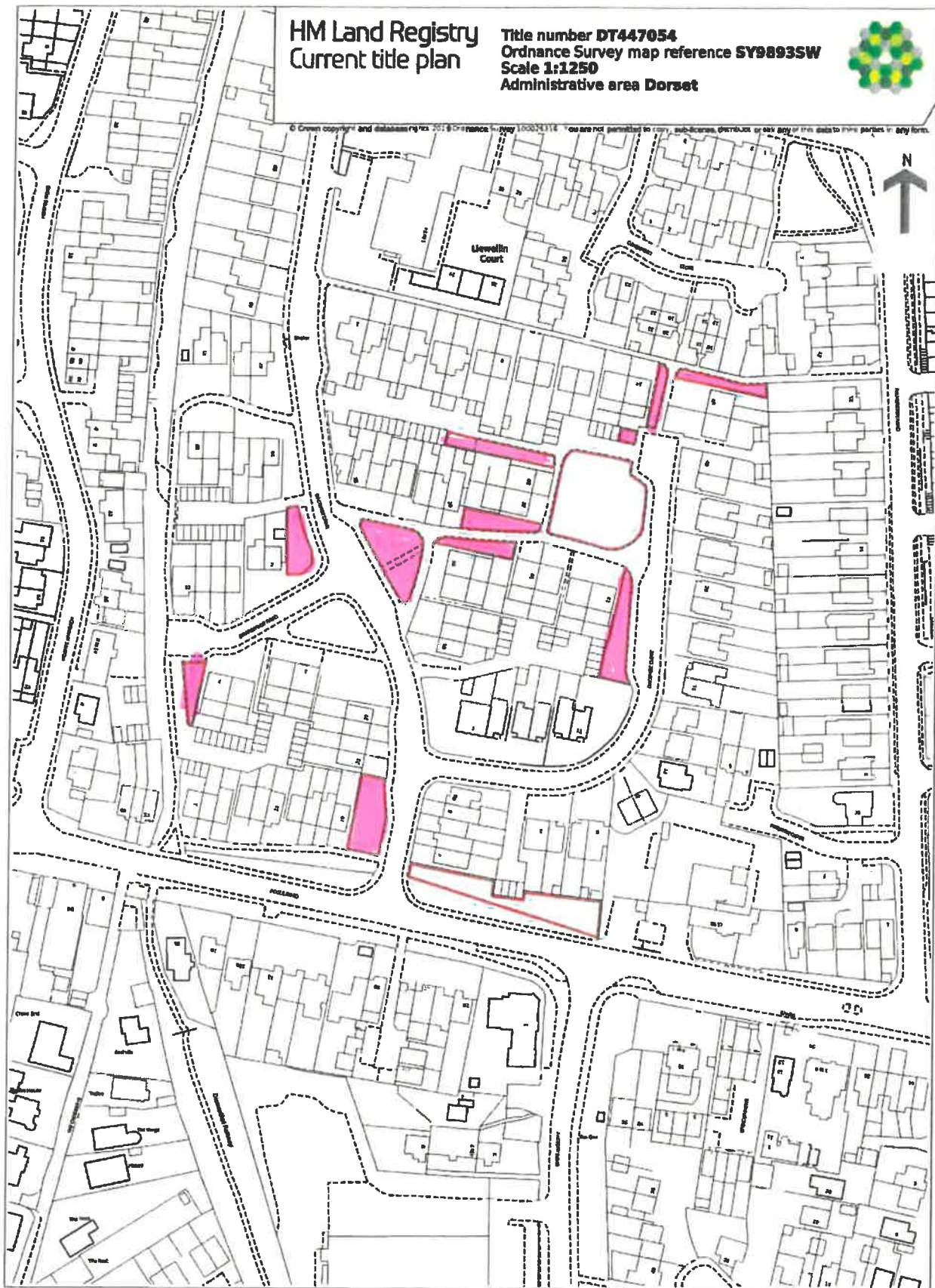
RECREATION GROUND

HM Land Registry
Current title plan

Title number DT447054
Ordnance Survey map reference SY9893SW
Scale 1:1250
Administrative area Dorset



© Crown copyright and database right 2018 Ordnance Survey 100019118. You are not permitted to copy, sub-license, distribute or sell any of this data to third parties in any form.



LAND AT DACOMBE

This is a copy of the title plan on 3 AUG 2021 at 12:04:31. This copy does not take account of any application made after that time even if still pending in HM Land Registry when this copy was issued.

This copy is not an 'Official Copy' of the title plan. An official copy of the title plan is admissible in evidence in a court to the same extent as the original. A person is entitled to be indemnified by the registrar if he or she suffers loss by reason of a mistake in an official copy. If you want to obtain an official copy, the HM Land Registry web site explains how to do this.

HM Land Registry endeavours to maintain high quality and scale accuracy of title plan images. The quality and accuracy of any print will depend on your printer, your computer and its print settings. This title plan shows the general position, not the exact line, of the boundaries. It may be subject to distortions in scale. Measurements scaled from this plan may not match measurements between the same points on the ground.

This title is dealt with by HM Land Registry, Weymouth Office.

Land Registry Official copy of title plan

Title number **DT403254**
Ordnance Survey map reference **SY9893SW**
Scale **1:1250**
Administrative area **Dorset: Purbeck**



© Crown copyright and database rights 2013 Ordnance Survey 100026916.
You are not permitted to copy, sub-license, distribute or sell any of this data to third parties in any form.



This official copy issued on 19 September 2013 shows the state of this title plan on 19 September 2013 at 15:27:26. It is admissible in evidence to the same extent as the original (s.67 Land Registration Act 2002).

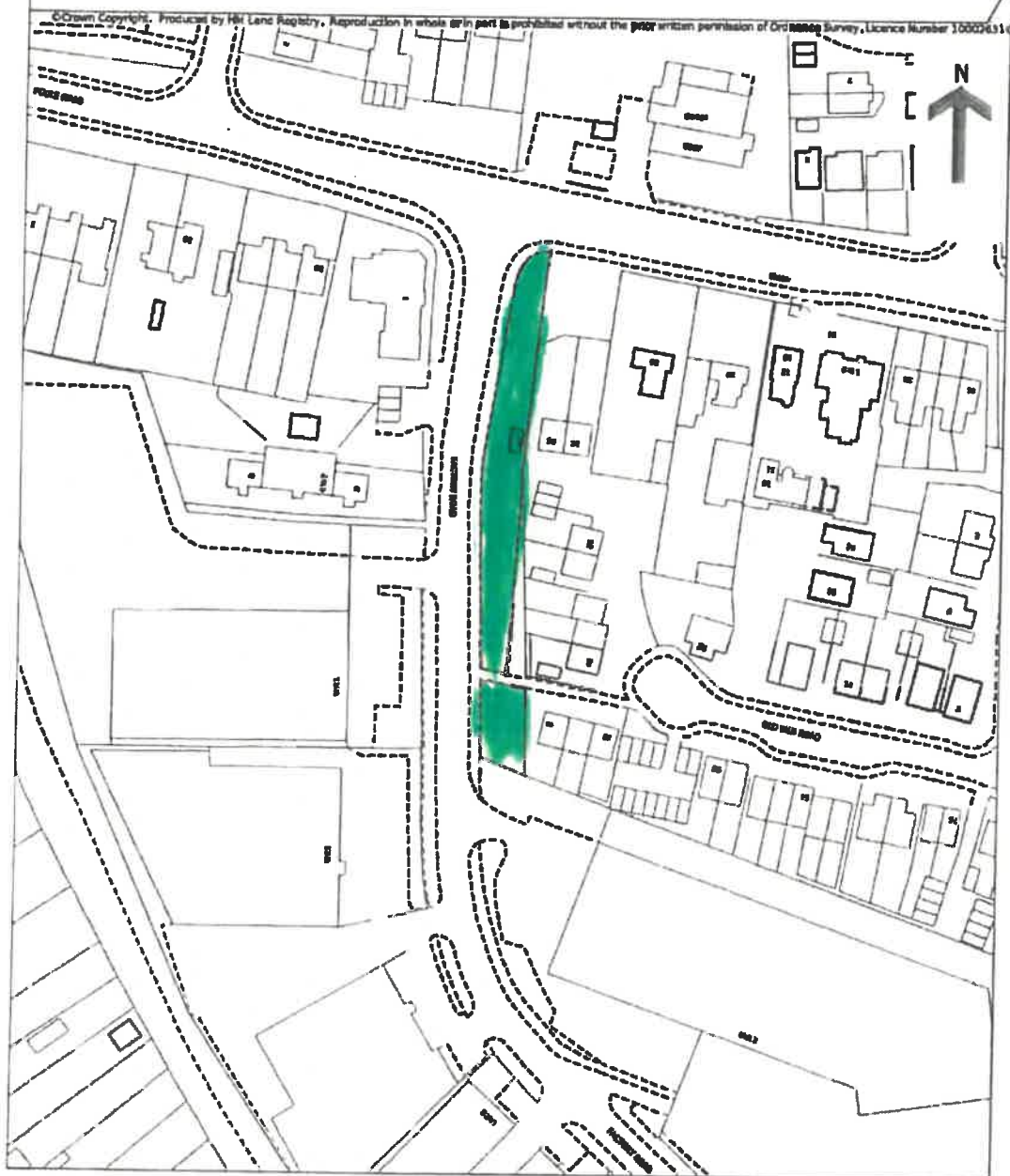
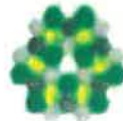
This title plan shows the general position, not the exact line, of the boundaries. It may be subject to distortions in scale. Measurements scaled from this plan may not match measurements between the same points on the ground. See Land Registry Public Guide 19 - Title Plans and Boundaries.

This title is dealt with by Land Registry, Weymouth Office.

POOLE ROAD

HM Land Registry Current title plan

Title number **DT363460**
Ordnance Survey map reference **SY9893SW**
Scale **1:1250**
Administrative area **Dorset**



This is a copy of the title plan on 3 AUG 2021 at 11:57:40. This copy does not take account of any application made after that time even if still pending in HM Land Registry when this copy was issued.

This copy is not an 'Official Copy' of the title plan. An official copy of the title plan is admissible in evidence in a court to the same extent as the original. A person is entitled to be indemnified by the registrar if he or she suffers loss by reason of a mistake in an official copy. If you want to obtain an official copy, the HM Land Registry web site explains how to do this.

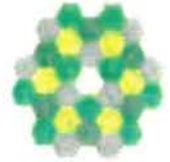
HM Land Registry endeavours to maintain high quality and scale accuracy of title plan images. The quality and accuracy of any print will depend on your printer, your computer and its print settings. This title plan shows the general position, not the exact line, of the boundaries. It may be subject to distortions in scale. Measurements scaled from this plan may not match measurements between the same points on the ground.

This title is dealt with by HM Land Registry, Weymouth Office.

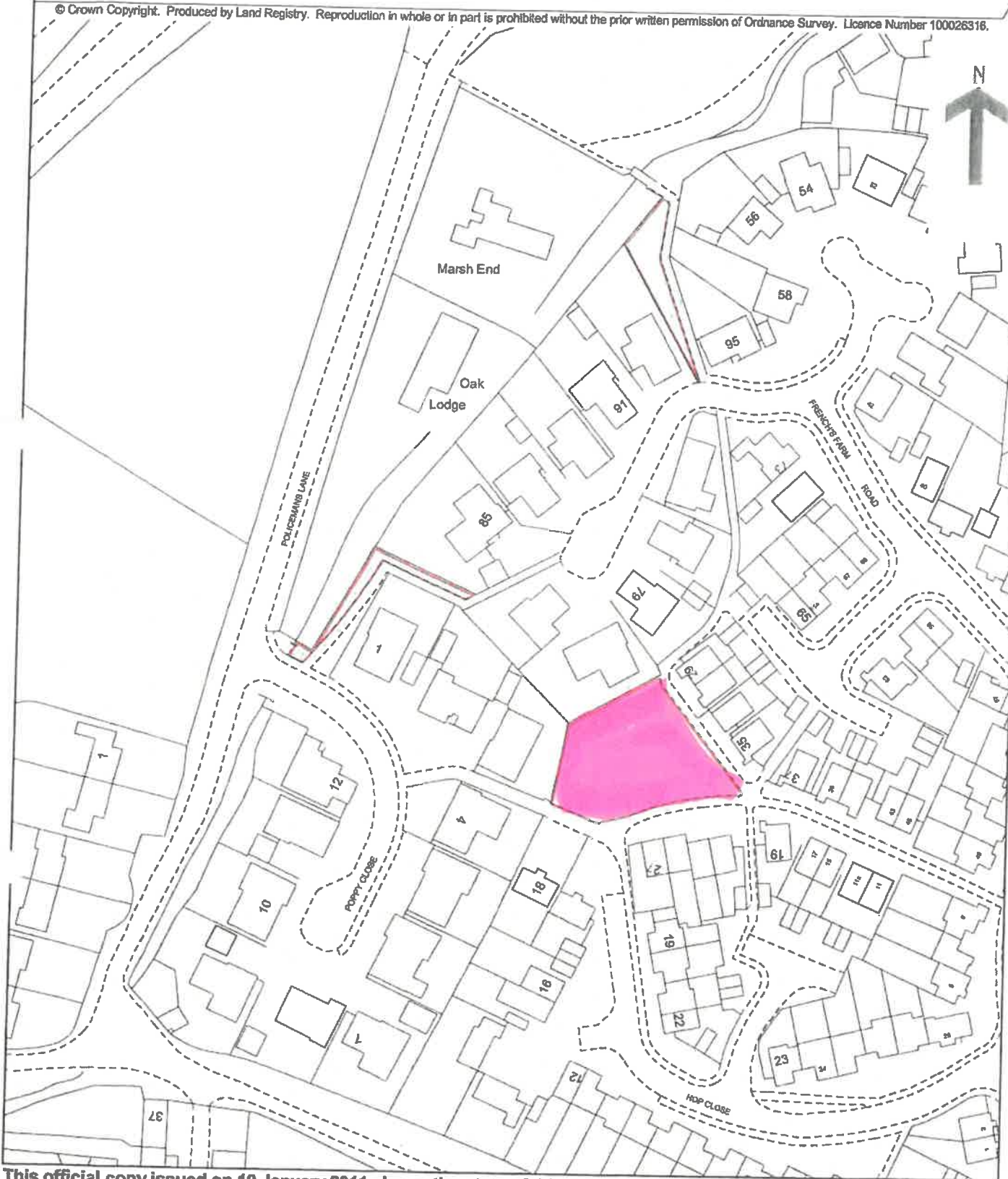
FACTORY ROAD

Land Registry Official copy of title plan

Title number **DT383658**
Ordnance Survey map reference **SY9693SE**
Scale **1:1250** enlarged from 1:2500
Administrative area **Dorset: Purbeck**



© Crown Copyright. Produced by Land Registry. Reproduction in whole or in part is prohibited without the prior written permission of Ordnance Survey. Licence Number 100026316.

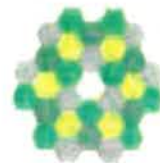


This official copy issued on 10 January 2011 shows the state of this title plan on 10 January 2011 at 16:09:50. It is admissible in evidence to the same extent as the original (s.67 Land Registration Act 2002).
This title plan shows the general position, not the exact line, of the boundaries. It may be subject to distortions in scale. Measurements scaled from this plan may not match measurements between the same points on the ground. See Land Registry Public Guide 19 - Title Plans and Boundaries.
This title is dealt with by Land Registry, Weymouth Office.

POPPY CLOSE

Land Registry
Official copy of
title plan

Title number **DT383658**
Ordnance Survey map reference **SY9693SE**
Scale **1:1250** enlarged from 1:2500
Administrative area **Dorset: Purbeck**



© Crown Copyright. Produced by Land Registry. Reproduction in whole or in part is prohibited without the prior written permission of Ordnance Survey. Licence Number 100026316.



This official copy issued on 10 January 2011 shows the state of this title plan on 10 January 2011 at 16:09:50. It is admissible in evidence to the same extent as the original (s.67 Land Registration Act 2002).
This title plan shows the general position, not the exact line, of the boundaries. It may be subject to distortions in scale. Measurements scaled from this plan may not match measurements between the same points on the ground. See Land Registry Public Guide 19 - Title Plans and Boundaries.
This title is dealt with by Land Registry, Weymouth Office.

H.M. LAND REGISTRY			TITLE NUMBER	
			DT29126	
ORDNANCE SURVEY PLAN REFERENCE	COUNTY	SHEET	NATIONAL GRID	SECTION
	DORSET		SY 9792	B
Scale: 1/1250 Enlarged from 1/2500 PURBECK DISTRICT			© Crown copyright 1973	
LYTCHETT MINSTER PARISH				



This is a copy of the title plan on 3 AUG 2021 at 11:55:40. This copy does not take account of any application made after that time even if still pending in HM Land Registry when this copy was issued.

This copy is not an 'Official Copy' of the title plan. An official copy of the title plan is admissible in evidence in a court to the same extent as the original. A person is entitled to be indemnified by the registrar if he or she suffers loss by reason of a mistake in an official copy. If you want to obtain an official copy, the HM Land Registry web site explains how to do this.

HM Land Registry endeavours to maintain high quality and scale accuracy of title plan images. The quality and accuracy of any print will depend on your printer, your computer and its print settings. This title plan shows the general position, not the exact line, of the boundaries. It may be subject to distortions in scale. Measurements scaled from this plan may not match measurements between the same points on the ground.

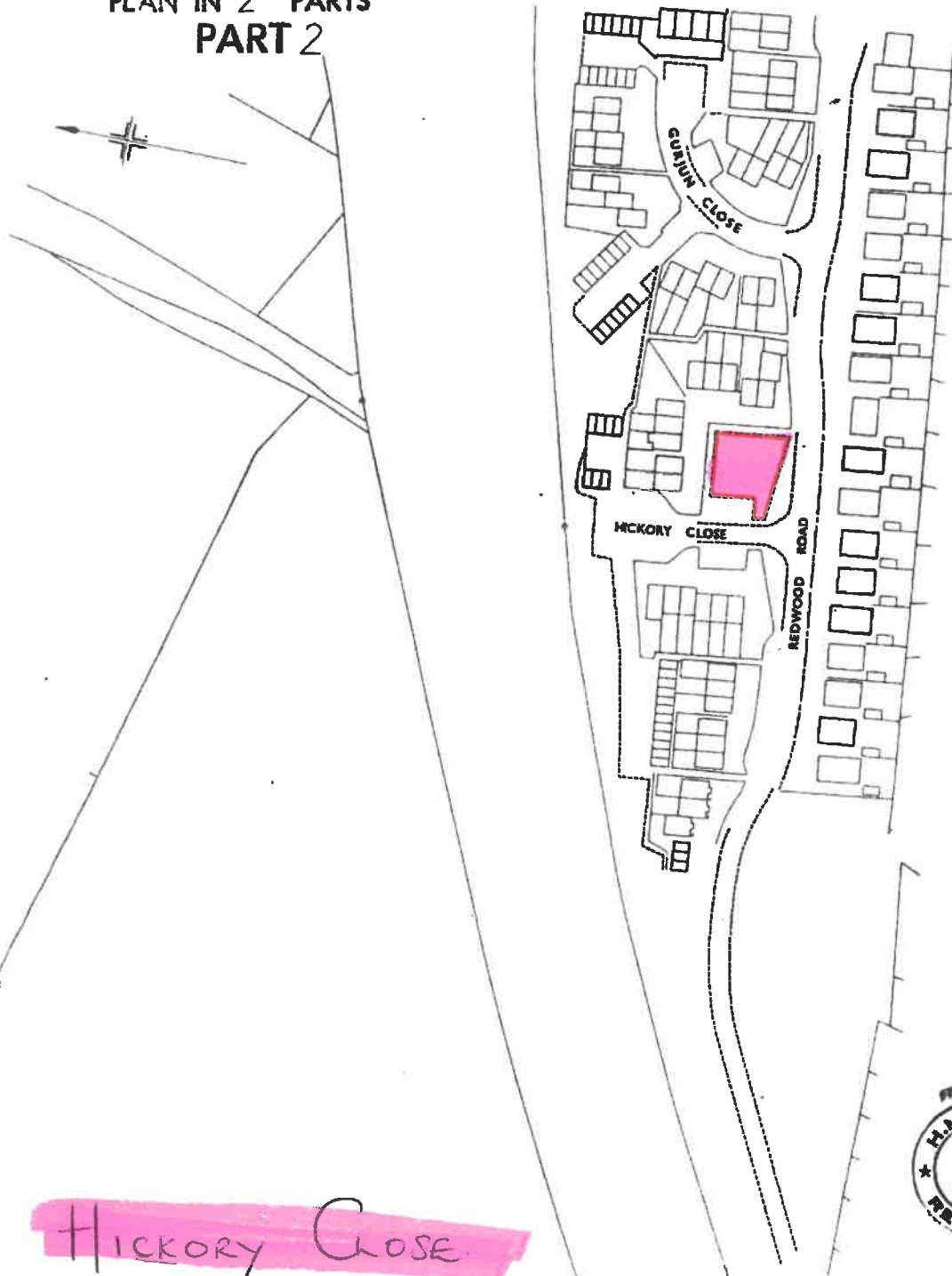
This title is dealt with by HM Land Registry, Weymouth Office.

© Crown Copyright. Produced by HM Land Registry. Further reproduction in whole or in part is prohibited without the prior written permission of Ordnance Survey. Licence Number 100026316.

CHERRY HILL GROVE

H.M. LAND REGISTRY		TITLE NUMBER	
		DT 130055	
ORDNANCE SURVEY PLAN REFERENCE	SY 9793	SECTION F	Scale 1/1250
COUNTY DORSET	DISTRICT PURBECK		© Crown copyright 1980

PLAN IN 2 PARTS
PART 2



This is a copy of the title plan on 3 AUG 2021 at 11:59:41. This copy does not take account of any application made after that time even if still pending in HM Land Registry when this copy was issued.

This copy is not an 'Official Copy' of the title plan. An official copy of the title plan is admissible in evidence in a court to the same extent as the original. A person is entitled to be indemnified by the registrar if he or she suffers loss by reason of a mistake in an official copy. If you want to obtain an official copy, the HM Land Registry web site explains how to do this.

HM Land Registry endeavours to maintain high quality and scale accuracy of title plan images. The quality and accuracy of any print will depend on your printer, your computer and its print settings. This title plan shows the general position, not the exact line, of the boundaries. It may be subject to distortions in scale. Measurements scaled from this plan may not match measurements between the same points on the ground.

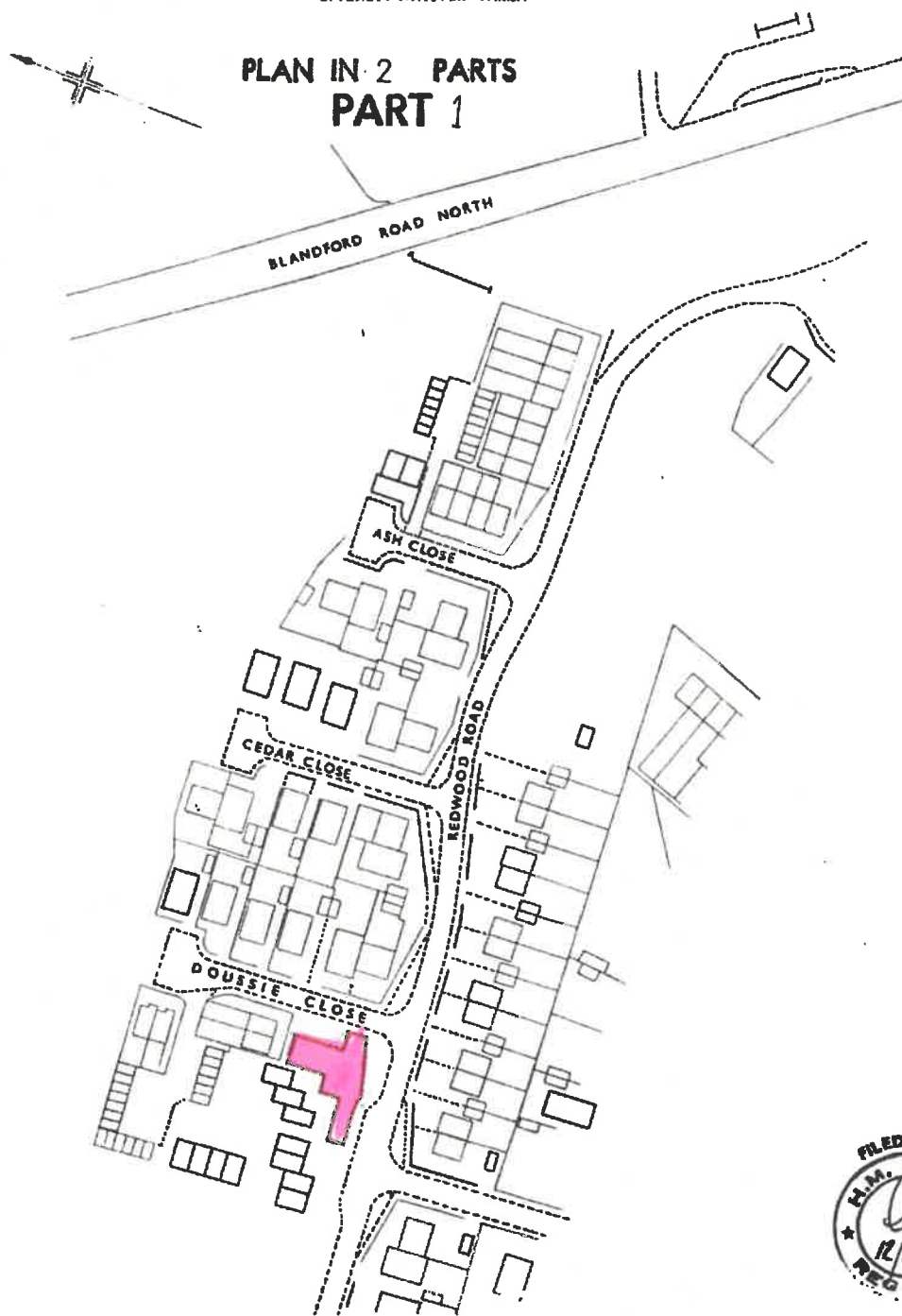
This title is dealt with by HM Land Registry, Weymouth Office.

© Crown Copyright. Produced by HM Land Registry. Further reproduction in whole or in part is prohibited without the prior written permission of Ordnance Survey. Licence Number 100026316.

H.M. LAND REGISTRY		DT130055	
ORDNANCE SURVEY PLAN REFERENCE	COUNTY DORSET	SHEET SY9793	SECTION D
Scale: 1/1250 Enlarged from 1/2500		PURBECK DISTRICT © Crown copyright 1975	

LYTCHETT MINSTER PARISH

**PLAN IN 2 PARTS
PART 1**



DOUSSIE CLOSE

This is a copy of the title plan on 3 AUG 2021 at 11:59:41. This copy does not take account of any application made after that time even if still pending in HM Land Registry when this copy was issued.

This copy is not an 'Official Copy' of the title plan. An official copy of the title plan is admissible in evidence in a court to the same extent as the original. A person is entitled to be indemnified by the registrar if he or she suffers loss by reason of a mistake in an official copy. If you want to obtain an official copy, the HM Land Registry web site explains how to do this.

HM Land Registry endeavours to maintain high quality and scale accuracy of title plan images. The quality and accuracy of any print will depend on your printer, your computer and its print settings. This title plan shows the general position, not the exact line, of the boundaries. It may be subject to distortions in scale. Measurements scaled from this plan may not match measurements between the same points on the ground.

This title is dealt with by HM Land Registry, Weymouth Office.

© Crown Copyright. Produced by HM Land Registry. Further reproduction in whole or in part is prohibited without the prior written permission of Ordnance Survey. Licence Number 100026316.

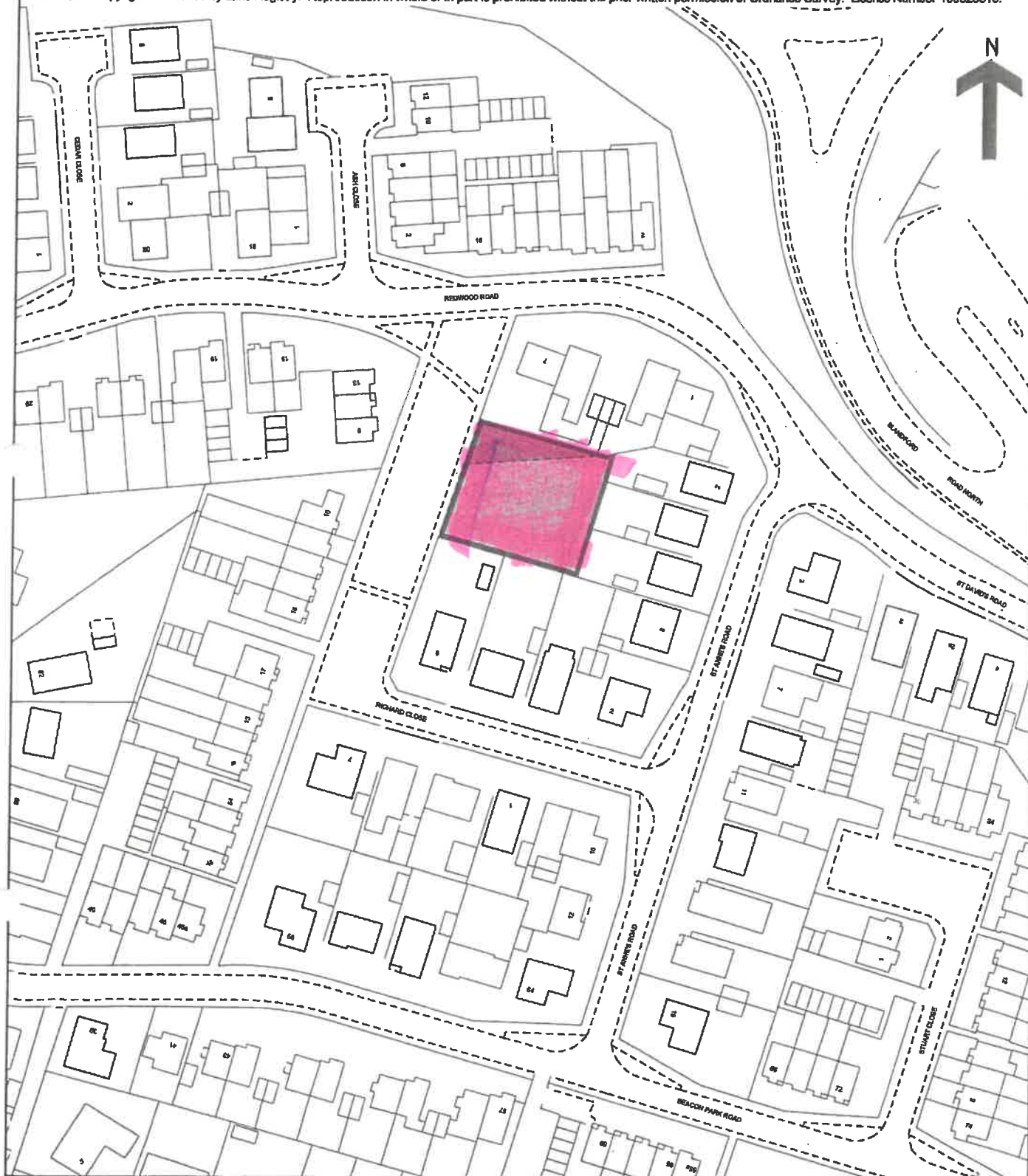
REDWOOD ROAD PLAY AREA

Land Registry Official copy of title plan

Title number **DT373589**
Ordnance Survey map reference **SY9793NE**
Scale **1:1250** enlarged from 1:2500
Administrative area **Dorset: Purbeck**



© Crown Copyright. Produced by Land Registry. Reproduction in whole or in part is prohibited without the prior written permission of Ordnance Survey. Licence Number 100026316.



This official copy issued on 6 August 2009 shows the state of this title plan on 6 August 2009 at 11:49:48. It is admissible in evidence to the same extent as the original (s.67 Land Registration Act 2002).

This title plan shows the general position, not the exact line, of the boundaries. It may be subject to distortions in scale. Measurements scaled from this plan may not match measurements between the same points on the ground. See Land Registry Public Guide 19 - Title Plans and Boundaries.

This title is dealt with by Land Registry, Weymouth Office.



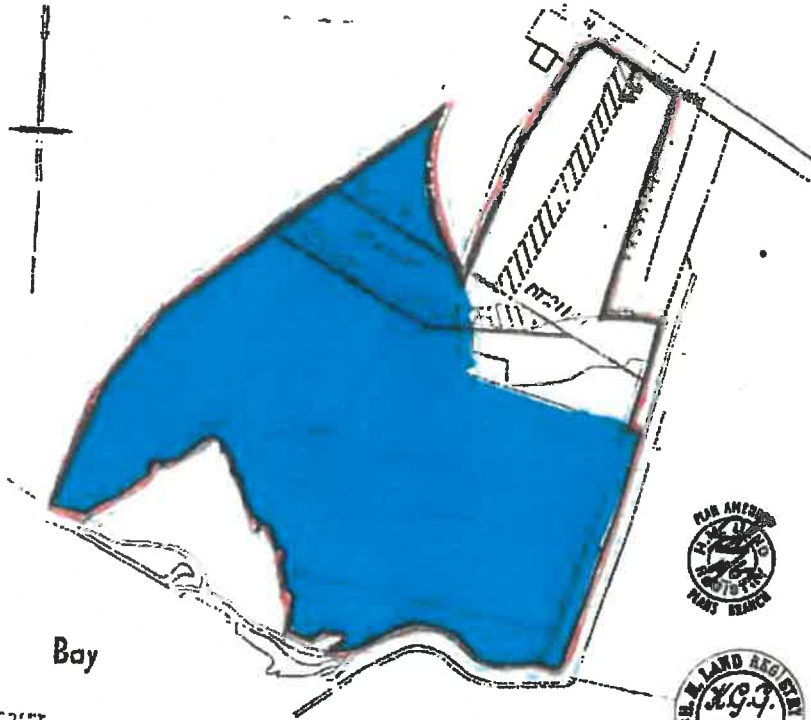
UPTON LIBRARY

H.M. LAND REGISTRY.

CERTIFICATE COPY OF THE

FILED PLAN OF TITLE N^o **P.85215**

Scale 7.5 Feet to one inch.
1:2500



Lytchett Bay

DORSET
PORTLAND DISTRICT

D.S. DORSET. XLIII. II.
DN. of 1825
ARISH or LYTCHETT MINSTER

NOTE:
The boundary adjoining Lytchett Bay is the
High Water Mark of Tides, and the colour of blue
for the bay, and the colour of red
colour is intended to indicate this.

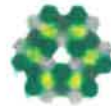
The undefined boundaries of this land
having been plotted before the erection
of fences are subject to revision on
survey after their erection.



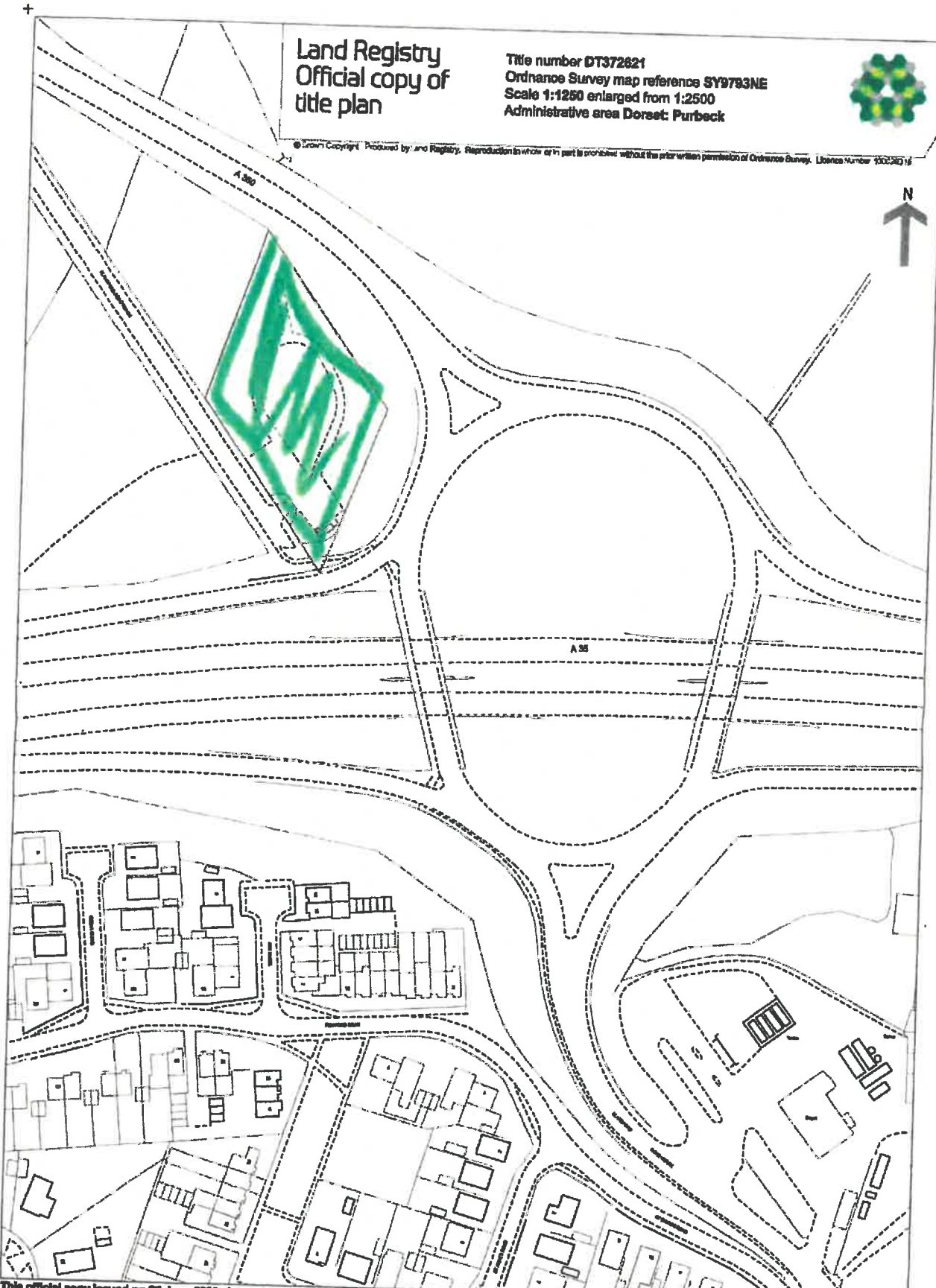
LYTCHETT BAY VIEW (BORDEAUX ROAD)

**Land Registry
Official copy of
title plan**

Title number **DT372621**
Ordnance Survey map reference **SY9783NE**
Scale **1:1250** enlarged from 1:2500
Administrative area **Dorset: Purbeck**



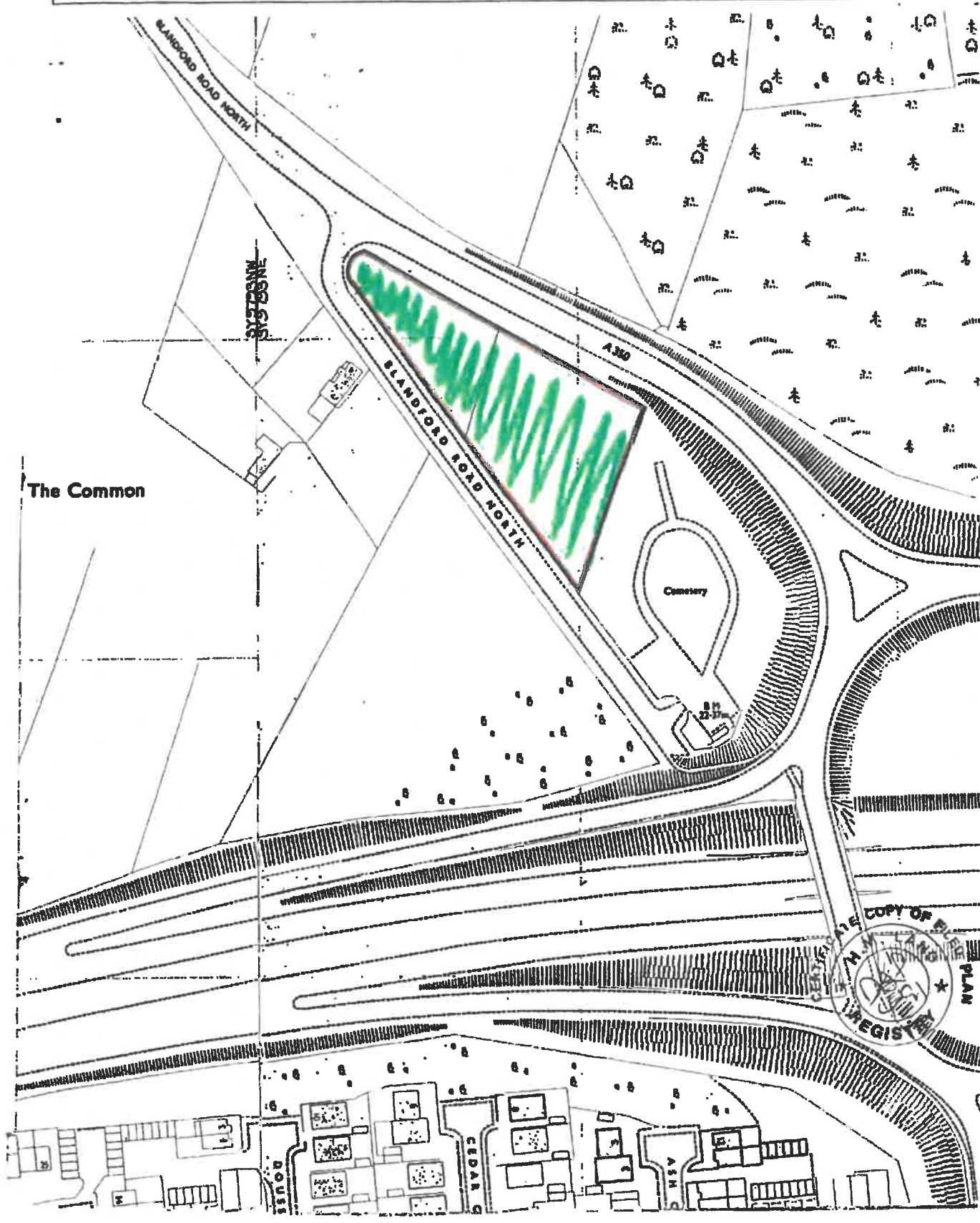
© Crown Copyright. Produced by Land Registry. Reproduction in whole or in part is prohibited without the prior written permission of Ordnance Survey. Licence Number 100024018



This official copy issued on 22 June 2009 shows the state of this title plan on 22 June 2009 at 14:51:05. It is admissible in evidence to the same extent as the original (s.67 Land Registration Act 2002).
This title plan shows the general position, not the exact line, of the boundaries. It may be subject to distortions in scale. Measurements scaled from this plan may not match measurements between the same points on the ground. See Land Registry Public Guide 19 - Title Plans and Boundaries.
This title is dealt with by Land Registry, Weymouth Office.

OLD CENEREY

H.M. LAND REGISTRY		TITLE NUMBER	
		DT 134844	
ORDNANCE SURVEY PLAN REFERENCE	SY9793K W	SY9793K E	Scale 1/1250
COUNTY	DORSET	DISTRICT	PURBECK
			© Crown Copyright



NEW CEMETERY