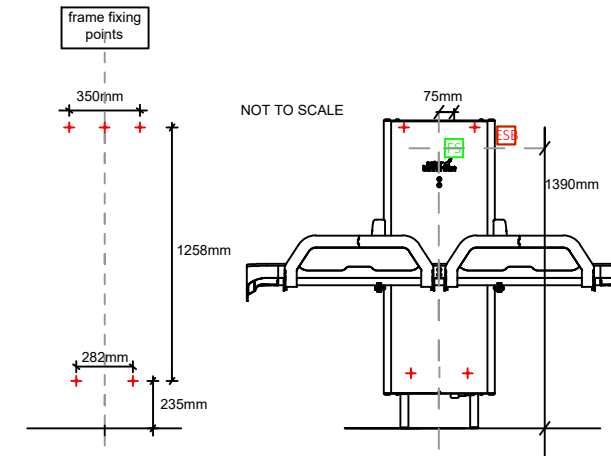
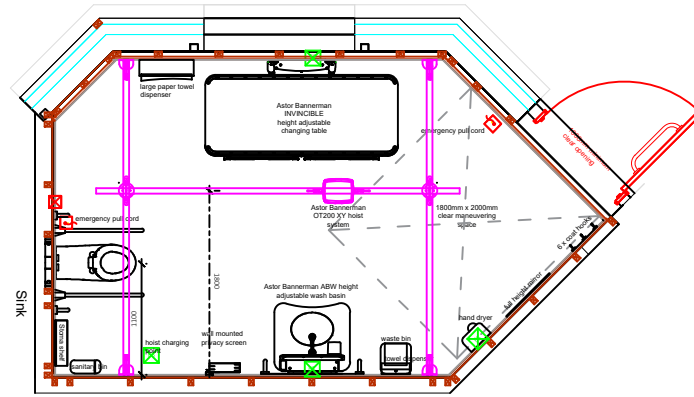


TRURO CP - CHANGING PLACES ROOM - approx 13sqmt

EQUIPMENT USER GUIDE POSTERS
WILL BE IN FIXED IN PLACE

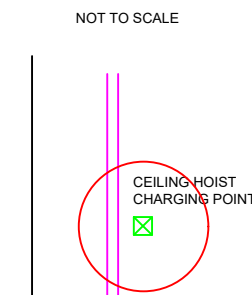
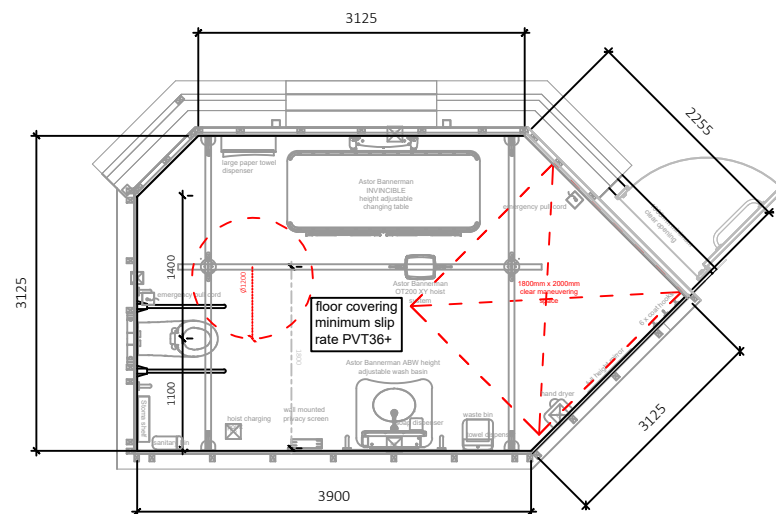
ALL DISPENSER & ANCILLARY ITEMS
WILL BE POSITIONED INLINE WITH
THE CP GUIDELINES



MAIN CONTRACTOR PRE INSTALLATION INFORMATION - AB
INVINCIBLE

ELECTRICS:

- Provide a 230v / 1.25kW mains supply, switched waterproof flex outlet as per dimensions shown, must be flush to the wall finish.
- FIXING:**
- The table must be fixed to a load bearing wall, capable of supporting a 56kg load on the wall. 227kg maximum working weight load x 2.5 times
 - The wall space must be clear of any obstruction from floor - ceiling
 - Recommended wall construction is timber or metal stud with verticals set at 600mm centre's. Lower and upper tracks secured to a solid floor and ceiling structure.
 - 25mm plywood fitted to the vertical studs from floor to ceiling.



MAIN CONTRACTOR PRE INSTALLATION INFORMATION - A2B
CEILING HOIST

ELECTRICS:

- Provide a 5a switched fused spur with cable outlet, recessed into the ceiling at the noted position.
- FIXING:**
- The wall brackets / wall posts must be secured to a suitable wall structure capable of carrying a 330kg load on the wall fixing. Maximum working load 200kg
 - Recommended wall construction is timber or metal stud with verticals set at 600mm centre's. Lower and upper tracks secured to a solid floor and ceiling structure.
 - 25mm plywood fitted to the vertical studs from floor to ceiling
 - Ceiling fixing to either timber joists or steelwork is subject to a site survey.

MAIN CONTRACTOR PRE INSTALLATION INFORMATION -

ABW CP/6SP - HEIGHT ADJUSTABLE SINK

PLUMBING:

- Provide water outlets with $\frac{1}{2}$ " BSP washing machine type valves pointing upwards.
- Centres of the valves to be at 200mm from finished floor level and offset to the left of the sink centre-line by 140mm
- The cold & water feeds will be covered with a 50 x 75mm white trunking during installation.
- Provide a 32mm / $\frac{1}{2}$ " waste pipe with the open top 200mm from the finished floor. Pipe must be set on the centre-line of the sink

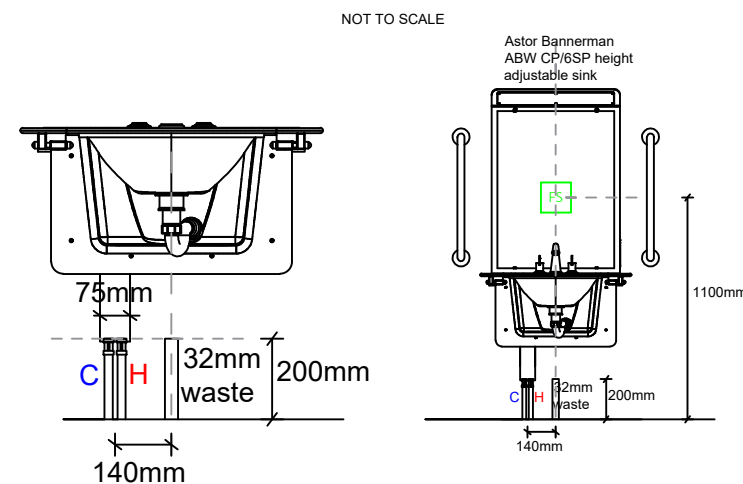
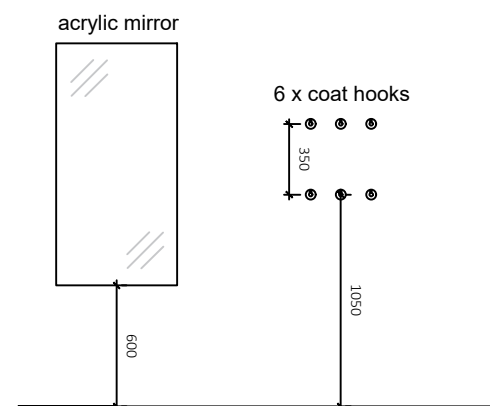
ELECTRICS:

- The ABW CP is to be supplied by mains electricity @ 230v and transformed to 24v within the unit.
- Provide a 30mA RCD protected fused spur with a flush mounted flex outlet cover plate to the wall behind the unit set at a height of 1100mm from the finished floor on the center-line of the unit.

FIXING:

- The sink must be fixed to a load bearing wall, capable of carrying a 100kg load on each wall fixing.
- The wall space must be clear of any obstruction from 200mm above floor - 2200mm.
- If wall construction is timber or metal stud all verticals must be set at no more than @ 600mm centres. Lower and upper tracks secured to a solid floor and ceiling structure.
- 25mm plywood fitted directly to the vertical studs from floor to ceiling.
- Minimum of a medium density concrete block can be fixed directly into, maximum surface finish material depth of 60mm

- THE HOIST TRACK RAIL IS DESIGNED WITH A SAFE WORKING LOAD OF 300KG. WALLS, TIMBER, STEELWORK OR STRUCTURAL SLAB MUST ACCEPT A 330KG LOAD BEARING
- ASTOR BANNERMAN ENGINEERS WILL CONSIDER AND AGREE ALL FINAL SETTING OUT DIMENSIONS WHEN ON SITE.
- ALL FIXINGS WILL BE IN ACCORDANCE WITH THE MANUFACTURERS GUIDELINES AND BE WEIGHT TESTED TO LOLR REGULATIONS - TEST REPORTS WILL BE ISSUED AS PART OF THE O&M SUBMISSION
- A LIVE POWER SUPPLY IS REQUIRED TO ALLOW THE ENGINEERS TO CARRY OUT A FULL TEST AND COMMISSIONING OF THE HOIST & SINK
- HOT & COLD WATER MUST BE AVAILABLE FOR THE SINK TO BE FULLY TESTED
- THE ENGINEERS WILL DEMONSTRATE THE OPERATION OF THE EQUIPMENT TO A REPRESENTATIVE OF THE MAIN CONTRACTOR
- IF THE SERVICES ARE NOT AVAILABLE AND THE WALLS, TIMBER JOISTS, STEELWORK OR STRUCTURAL SLAB ARE NOT OF A CONSTRUCTION TO ACCEPT THE WEIGHT TEST RESULTING IN AN INCOMPLETE INSTALLATION THERE WILL BE A RETURN VISIT CHARGE



- ASTOR BANNERMAN DO NOT ACCEPT ANY DESIGN LIABILITY WITH THE PROVISION OF THIS DRAWING, THE ORIGINAL PRINCIPAL DESIGNER OR ARCHITECTS RESPONSIBILITIES REMAIN

This drawing or document is COPYRIGHT and the property of Astor Bannerman.
It must not be copied (in whole or in part) used for manufacture or otherwise disclosed without prior written consent of the company. Any copies of this drawing made by any method must also include a copy of this legend.

Astor-Bannerman

UNLESS OTHERWISE SPECIFIED
DIMENSIONS ARE IN MILLIMETERS

AUTHOR:		DATE:	25.01.23
---------	--	-------	----------

DO NOT SCALE DRAWING

A3 - 1:75

REVISION:

	FINISH:
--	---------

	TITLE:
--	--------

	DWG NO
--	--------

SHEET 1 OF 1