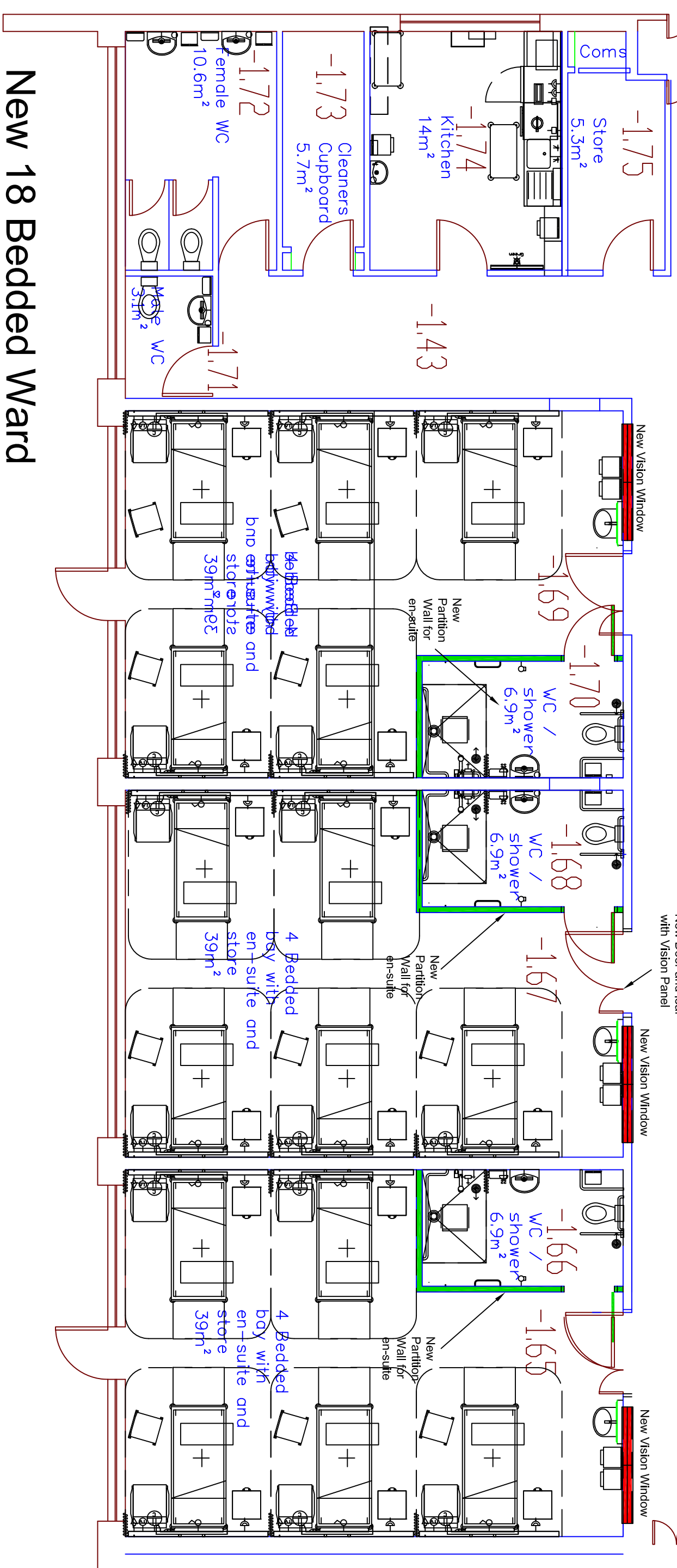
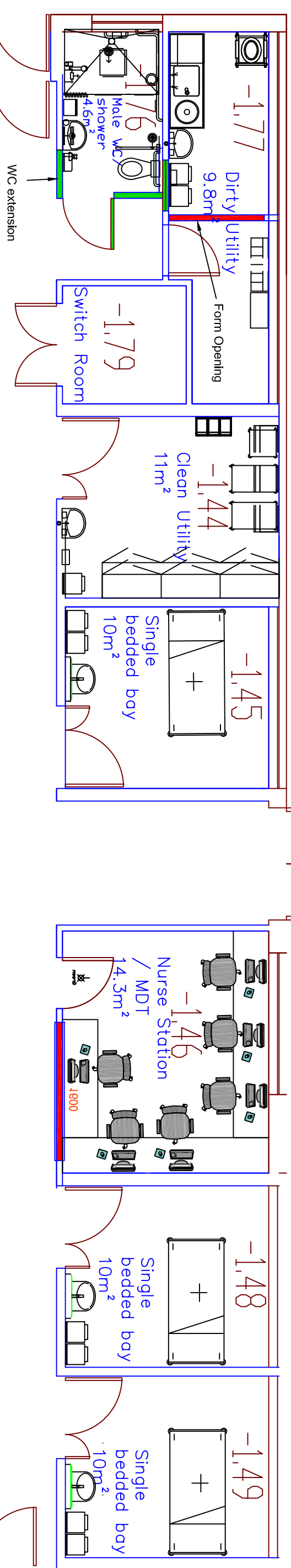


Existing Layout



New 18 Bedded Ward

1.0	Back Guard	2.0	Hot Water	2.0	Old Hot Water tank has originally a children's ward but has been split into two sections, one half a birthing unit and the other half an Admin base. The purpose of this project is to refurbish the Admin base bringing it back into clinical use.
3.0	Scope of Works	3.0	Scope of Works	3.0	Scope of Works
4.0	Preliminaries	4.0	Preliminaries	4.0	Preliminaries
5.0	Purchase container for equipment storage	5.0	Purchase container for equipment storage	5.0	Purchase container for equipment storage
6.0	Supps	6.0	Supps	6.0	Supps
7.0	Site set up	7.0	Site set up	7.0	Site set up
8.0	Building Works Partitions <i>1.65-1.68-1.70-1.76</i>	8.0	Building Works Partitions <i>1.65-1.68-1.70-1.76</i>	8.0	Building Works Partitions <i>1.65-1.68-1.70-1.76</i>
9.0	Erection partition walls	9.0	Erection partition walls	9.0	Erection partition walls
10.0	Form plasterboard and Stud wall Partition forming wall with single door	10.0	Form plasterboard and Stud wall Partition forming wall with single door	10.0	Form plasterboard and Stud wall Partition forming wall with single door
11.0	Door/HM 595 (925mm), single leaf, plain finish, 180 deg opening, occupancy indicator, accessible, outside emergency release	11.0	Door/HM 595 (925mm), single leaf, plain finish, 180 deg opening, occupancy indicator, accessible, outside emergency release	11.0	Door/HM 595 (925mm), single leaf, plain finish, 180 deg opening, occupancy indicator, accessible, outside emergency release
12.0	Building Works Wall openings <i>1.65-1.67-1.69-1.77</i>	12.0	Building Works Wall openings <i>1.65-1.67-1.69-1.77</i>	12.0	Building Works Wall openings <i>1.65-1.67-1.69-1.77</i>
13.0	Concrete opening in internal wall as per drawing for vision into yard bays	13.0	Concrete opening in internal wall as per drawing for vision into yard bays	13.0	Concrete opening in internal wall as per drawing for vision into yard bays
14.0	Create opening in wall to extend length of Dirty utility	14.0	Create opening in wall to extend length of Dirty utility	14.0	Create opening in wall to extend length of Dirty utility
15.0	Heating duct ceiling, floor and walls	15.0	Heating duct ceiling, floor and walls	15.0	Heating duct ceiling, floor and walls
16.0	Roofs <i>1.65-1.67-1.69</i>	16.0	Roofs <i>1.65-1.67-1.69</i>	16.0	Roofs <i>1.65-1.67-1.69</i>
17.0	Preparation, allow to remove all equipment from rooms and relocate to Container	17.0	Preparation, allow to remove all equipment from rooms and relocate to Container	17.0	Preparation, allow to remove all equipment from rooms and relocate to Container
18.0	Lighting	18.0	Lighting	18.0	Lighting
19.0	Relocate lighting to centre of room, room -1.67 remove 600 x 900 lighting on both sides of room, replacing lights to match existing	19.0	Relocate lighting to centre of room, room -1.67 remove 600 x 900 lighting on both sides of room, replacing lights to match existing	19.0	Relocate lighting to centre of room, room -1.67 remove 600 x 900 lighting on both sides of room, replacing lights to match existing
20.0	Allow for up and down bed head lighting 18 number PC £200	20.0	Allow for up and down bed head lighting 18 number PC £200	20.0	Allow for up and down bed head lighting 18 number PC £200
21.0	Power	21.0	Power	21.0	Power
22.0	Allow for 2 DSO at each bed 1 DSO to be on alternative circuit with a different colour fascia (blue)	22.0	Allow for 2 DSO at each bed 1 DSO to be on alternative circuit with a different colour fascia (blue)	22.0	Allow for 2 DSO at each bed 1 DSO to be on alternative circuit with a different colour fascia (blue)
23.0	Wash hand basin	23.0	Wash hand basin	23.0	Wash hand basin
24.0	IPS Panels With access unit floor to ceiling to mount Armitage Sharps Container Basin and Armitage Marktek Single Layer Thermostatic Sequential Mixer Tap and to conceal waste, domestic pipework, services and tap electrics where applicable, Eunuxco solid grade laminate (12mm panels with polished black realised edges, Top Panel to be hinged giving access to isolating valves.	24.0	IPS Panels With access unit floor to ceiling to mount Armitage Sharps Container Basin and Armitage Marktek Single Layer Thermostatic Sequential Mixer Tap and to conceal waste, domestic pipework, services and tap electrics where applicable, Eunuxco solid grade laminate (12mm panels with polished black realised edges, Top Panel to be hinged giving access to isolating valves.	24.0	IPS Panels With access unit floor to ceiling to mount Armitage Sharps Container Basin and Armitage Marktek Single Layer Thermostatic Sequential Mixer Tap and to conceal waste, domestic pipework, services and tap electrics where applicable, Eunuxco solid grade laminate (12mm panels with polished black realised edges, Top Panel to be hinged giving access to isolating valves.
25.0	Supply and install 6 no. Marktek thermostatic tap and 2xr contour 21 wash hand basins with all services, plumbing alterations, fixtures and fittings. In the 3x5 bedded bays and single bed rooms.	25.0	Supply and install 6 no. Marktek thermostatic tap and 2xr contour 21 wash hand basins with all services, plumbing alterations, fixtures and fittings. In the 3x5 bedded bays and single bed rooms.	25.0	Supply and install 6 no. Marktek thermostatic tap and 2xr contour 21 wash hand basins with all services, plumbing alterations, fixtures and fittings. In the 3x5 bedded bays and single bed rooms.
26.0	Sanitary Wash Hand Basin SZ164	26.0	Sanitary Wash Hand Basin SZ164	26.0	Sanitary Wash Hand Basin SZ164
27.0	Contour 21 washbasin, integral back, Outlet, for connection to concealed services with concealed fixings, no tap holes, no overflow no drain no plug	27.0	Contour 21 washbasin, integral back, Outlet, for connection to concealed services with concealed fixings, no tap holes, no overflow no drain no plug	27.0	Contour 21 washbasin, integral back, Outlet, for connection to concealed services with concealed fixings, no tap holes, no overflow no drain no plug
28.0	Mixer Tap	28.0	Mixer Tap	28.0	Mixer Tap
29.0	A6243 Marktek 21 integral thermostatic, demountable panel mixer, single sequential lever, Armitage Biograd outlet fitted	29.0	A6243 Marktek 21 integral thermostatic, demountable panel mixer, single sequential lever, Armitage Biograd outlet fitted	29.0	A6243 Marktek 21 integral thermostatic, demountable panel mixer, single sequential lever, Armitage Biograd outlet fitted
30.0	SP750 Waste 1 1/4" outlet adaptor for all contour back outlet washbasins	30.0	SP750 Waste 1 1/4" outlet adaptor for all contour back outlet washbasins	30.0	SP750 Waste 1 1/4" outlet adaptor for all contour back outlet washbasins
31.0	SB020 (TRP) Tap 1 1/4" plastic cessaling code, 75mm seal, multi-purpose outlet	31.0	SB020 (TRP) Tap 1 1/4" plastic cessaling code, 75mm seal, multi-purpose outlet	31.0	SB020 (TRP) Tap 1 1/4" plastic cessaling code, 75mm seal, multi-purpose outlet
32.0	SP712 concealed hangers pressed steel toggle bolts for contour washbasins	32.0	SP712 concealed hangers pressed steel toggle bolts for contour washbasins	32.0	SP712 concealed hangers pressed steel toggle bolts for contour washbasins
33.0	Nurse call	33.0	Nurse call	33.0	Nurse call
34.0	Allow for a Static Nurse call system through out ward	34.0	Allow for a Static Nurse call system through out ward	34.0	Allow for a Static Nurse call system through out ward
35.0	Curtain catches	35.0	Curtain catches	35.0	Curtain catches
36.0	Allow for Curtain back for 18 beds with throw away blue curtains	36.0	Allow for Curtain back for 18 beds with throw away blue curtains	36.0	Allow for Curtain back for 18 beds with throw away blue curtains
37.0	Install windows looking into 5 bedded bay (Fire Glazing)	37.0	Install windows looking into 5 bedded bay (Fire Glazing)	37.0	Install windows looking into 5 bedded bay (Fire Glazing)
38.0	Install New doors 5 bedded bay -1.67 with vision panel	38.0	Install New doors 5 bedded bay -1.67 with vision panel	38.0	Install New doors 5 bedded bay -1.67 with vision panel
39.0	5 Bedded on suite WC and Shower <i>1.65-1.68-1.70</i>	39.0	5 Bedded on suite WC and Shower <i>1.65-1.68-1.70</i>	39.0	5 Bedded on suite WC and Shower <i>1.65-1.68-1.70</i>
40.0	Domestic Services:	40.0	Domestic Services:	40.0	Domestic Services:
41.0	Pick up and cart and domestic services from corridor "T" into main coming area, in 17mm copper pipe work fitted with full flow 1/4 turn isolating valves. Allow to Escalate floor to install soil Drainage	41.0	Pick up and cart and domestic services from corridor "T" into main coming area, in 17mm copper pipe work fitted with full flow 1/4 turn isolating valves. Allow to Escalate floor to install soil Drainage	41.0	Pick up and cart and domestic services from corridor "T" into main coming area, in 17mm copper pipe work fitted with full flow

43.0	Shower	
44.0	Armature Stems, TMI thermostatic shower in a box	
	SS933 Tyei CTV ceramic thermostatic mixing valve with extended heel, mounting box with stainless steel cover plate with white finish, Wm. Aramingle 2 shower unit with 3 function hand spray, 1800mm spiral hose Chromum plated, Mooring for shower tray, sealed curtain & curtain rail, waste trap and connectors, Grab rails.	
45.0	Floor	
46.0	Finishes	
	Toilet/WC Room Finishes:	
	Install PolySafe Vogue Ultra Pure, Decorative Heavy-Duty Safety Floor, WHIRLPOOL 4365 i/weld rod 5570 vinyl floor.	
47.0	Allow for 30b, Extract ventilation systems	
48.0	Female Toilets and Wash Hand Basin -172	
49.0	Strip Out and Disposal	
50.0	Isolate and remove hand basin	
51.0	Isolate and remove WC pan and cistern	
52.0	Mechanical Preparation	
53.0	Allow for all mechanical preparation, allow for underseal or pre-start survey	
54.0	Allow for Enabling and fix fix supplies and waste to basin and WC pan	
55.0	WC Pan & Flush Basin	
56.0	Supply Hand Flush Basin - Supply brassware Smorflow 21 compact tubular panel mounted 230mm projection spout	
57.0	Supply Potegrel WC Pan complete toilet units - Pan shall be floor mounted, back to wall, cistern concealed, flush valve remote through-panel mounted	
58.0	Allow for Removing existing bolts pan & cistern. Build panelling to accommodate a concealed cistern install potceiral complete toilet units and make floor, supply materials, connectors, fixings & sundry items	
59.0	Allow for installation of electrical supply in each cubicle	
60.0	Mechanical Installation	
61.0	Allow for Basin Assembly and installation	
62.0	Allow for WC Pan Assembly and installation	
63.0	Allow recommendation of all services waste pipes	
64.0	Remove and replace mirrors	
65.0	Allow to install new issue Popper towel holder and soap dispenser (All areas)	
66.0	General Cupboard -173	
67.0	Strip Out and Disposal	
68.0	Install Jemmarix Sink Stainless steel unit/Allowing for all domestic services modifications and connectors	
69.0	Men Kitchen -175	
70.0	Strip Out and Disposal	
71.0	Install Hobart upright dishwasher, complete with stainless steel sink & drainer with pillar tap and spray jet. Allowng for all domestic services to be un and connected	
72.0	Install wall unit, fridge	
73.0	Install wall unit, 2x 1000 x 400	
74.0	Install 2x 1000 x 600 base units with top drains	
75.0	Install Wash hand basin	
76.0	allow to install power sockets	
77.0	Allow for install heat detector	
78.0	Allow to replace flooring safety floor	
79.0	Male Female WC Shower -175	
80.0	Allow to remove and extend wall and door opening	
81.0	Specification to match on-site bays	
82.0	Dry Utility -177	
83.0	Create opening in internal wall as per drawing	
84.0	Strip Out and Disposal	
85.0	Install door opening	
86.0	Install (DU HS)beds (replacement) top inlet soap hopper with sink	
87.0	Allow to install bed pan or massator	
88.0	Install wash hand basin	
89.0	Remove and replace carpet with safety vinyl floor.	
90.0	Allow for future and fittings	

91.0	Crane Utility - 1-46	
92.0	Strip Out and Disposal	
93.0	Remove and replace carpet with safety vinyl floor.	
94.0	Install west hand basin	
95.0	Install base units 3x 1000 units with top drains.	
96.0	Install base units 3x 1000 400x600 height	
97.0	Allow for future and fittings	
98.0	Allow for two DSO under wall units 200mm above	
99.0	Single Bed Rooms - 1-45, 1-48, 1-49	
100.0	Strip Out and Disposal	
101.0	Remove and replace carpet with safety vinyl floor.	
102.0	Install west hand basin	
103.0	Remove boxing around Medical Gas running	
104.0	Install new roller window blinds	
105.0	MDT and Nurse station - 1-46	
106.0	Clean windows from ceiling	
107.0	Install Eform with tables around room	
108.0	Create window opening in internal wall as per drawing	
109.0	Install vision panel with fire glazing	
110.0	Flooring	
111.0	Remove Carpet and old vinyl floor	
112.0	Replace with new vinyl floor Type TBC, allow PC E20	
113.0	Bed 9x9 1-45, 1-48, 1-49, 1-65, 1-67, 1-69	
	Install Poly/for Prestage Ice Crystal 350 (vlf) (under review)	
	En-suites	
	1-66, 1-68, 1-70, 1-71, 1-76	
	Install Poly/for Prestage Ice Crystal 350 (vlf) (vlf) (under review)	
	Kitchen 1-74 Dry Utility	
	1-77 Clean Utility 1-44 Install Poly/for Prestage Ice Crystal 350 (vlf) (vlf) (under review)	
	Install poly/for clapping strip (CS-5) with cove former (C20) in accordance with the product manufacturer specifications.	
	Prepare all streets with latex & resin before you make receive all street vinyl.	
	Make good any disturbance to existing floor levels	
	Weld all joints and no seal all butt joints / ducts, conduits etc. Install all necessary trim to floor access plates, hinge plates & windows where required in accordance with manufacturers specifications.	
114.0	Medical gases	
115.0	Remove boxing concealing Medical gases	
116.0	Relaunch medical gas outlets allowing to extend services where necessary.	
117.0	Decoration throughout	
118.0	Corridors, Waiting Areas.	
119.0	Dulux Trade Diamond High Performance (D99) 2 Coats	
120.0	Consulting Rooms, Cubicles, Utility Rooms, WC.	
	Staff and Admin, Triage	
121.0	Dulux Trade Sheridan Diamond Eggshell (D320) 2 coats	
122.0	Trim and Interior Joinery	
123.0	Dulux Quick Dry (D1043) 3 coats	
124.0	Note full specification for application is in the Dulux paint Specification in the link above	

Item#	Quantity	Title/Name, designation, material, dimension etc.	Article No./Reference
Designed by Clive Austin	Checked by	Approved by - date	Date 00/00/00
		Filename	Scale 1:50
<div>PAH</div> <div>Old Harold Ward</div> <div>Additional beds</div> <div>0</div> <div>Sheet</div> <div>1/1</div>			

PAH

Old Harold Ward

Additional

dition

dition

