

## Features and benefits:

- Unique design to fit any standard 2" tow-hitch
- Lightweight
- 90dB Audible overload alarm
- Unmatched battery life of 1200hrs
- Waterproof IP67/NEMA6
- Internal antennae
- Compact size
- Proprietary 2.4 GHz wireless communication
- Design validated by F.E.A.
- Bluetooth option is available and is supplied with a free HHP App for iOS and Android

[Redacted under FOIA Section 43(2) Commercial Interests] has developed a 25kN, wireless load cell specifically engineered for the emergency services, salvage and 4 x 4 industries. The Towcell® allows for increased safety and the avoidance of costly overloads by providing real-time monitoring of tensile towing forces during recovery, clearance and salvage efforts. The [Redacted under FOIA Section 43(2) Commercial Interests] is rugged, lightweight, compact and can be installed, with ease, onto any tow bar, whether it's a standard 52mm or 2" ball or pin assembly and is ready to use in seconds.

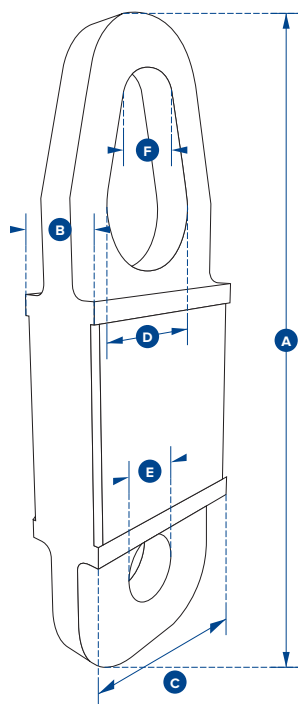
Modelled after [Redacted under FOIA Section 43(2) Commercial Interests] best-selling Radiolink plus, the [Redacted under FOIA Section 43(2) Commercial Interests] is constructed of high quality aircraft grade aluminium, featuring an advanced internal design structure providing the product with an unrivalled strength to weight ratio, and allowing for the use of a separate internal sealed enclosure. This internal sealed enclosure provides the internal electronic components with IP67/NEMA 6 waterproof

environmental protection even with the battery cover plate missing. Easily sourced AA alkaline batteries offer massive battery life of 1200 hours, and the Towcell® utilises an unbreakable internal antennae.

Towcell® loads can be displayed on [Redacted under FOIA Section 43(2) Commercial Interests] rugged and versatile SW-HHP handheld display, or viewed and simultaneously data logged with a Windows tablet via [Redacted under FOIA Section 43(2) Commercial Interests] software package.



**making the lifting industry a safer place**



Part Number	Towcell	Towcell - Bluetooth version
Capacity	25kN	25kN
Resolution	0.01kN	0.01kN
Weight	1.4kg	1.4kg
	3lb	3lb
Safety Factor	5:1	5:1
Battery Type	4 x AA Alkaline	4 x AA Alkaline
Battery Life	1,200 hours continuous	500 hours continuous
Operating Temp	-10°C to +50°C / 14°F to 122°F	-10°C to +50°C / 14°F to 122°F
Accuracy	±0.5% of applied load	±0.5% of applied load
Frequency	2.4 GHz	-
System Range	700 metres / 2300 feet	100 metres / 328 feet
Data Rate	50Hz	50Hz
Protection	IP67 / NEMA 6	IP67 / NEMA 6
Dimension A	300mm	300mm
	11.81"	11.81"
Dimension B	43mm	43mm
	1.70"	1.70"
Dimension C	101mm	101mm
	4.00"	4.00"
Dimension ØD	51mm	51mm
	2.00"	2.00"
Dimension ØE	27mm	27mm
	1.06"	1.06"
Dimension ØF	31mm	31mm
	1.22"	1.22"