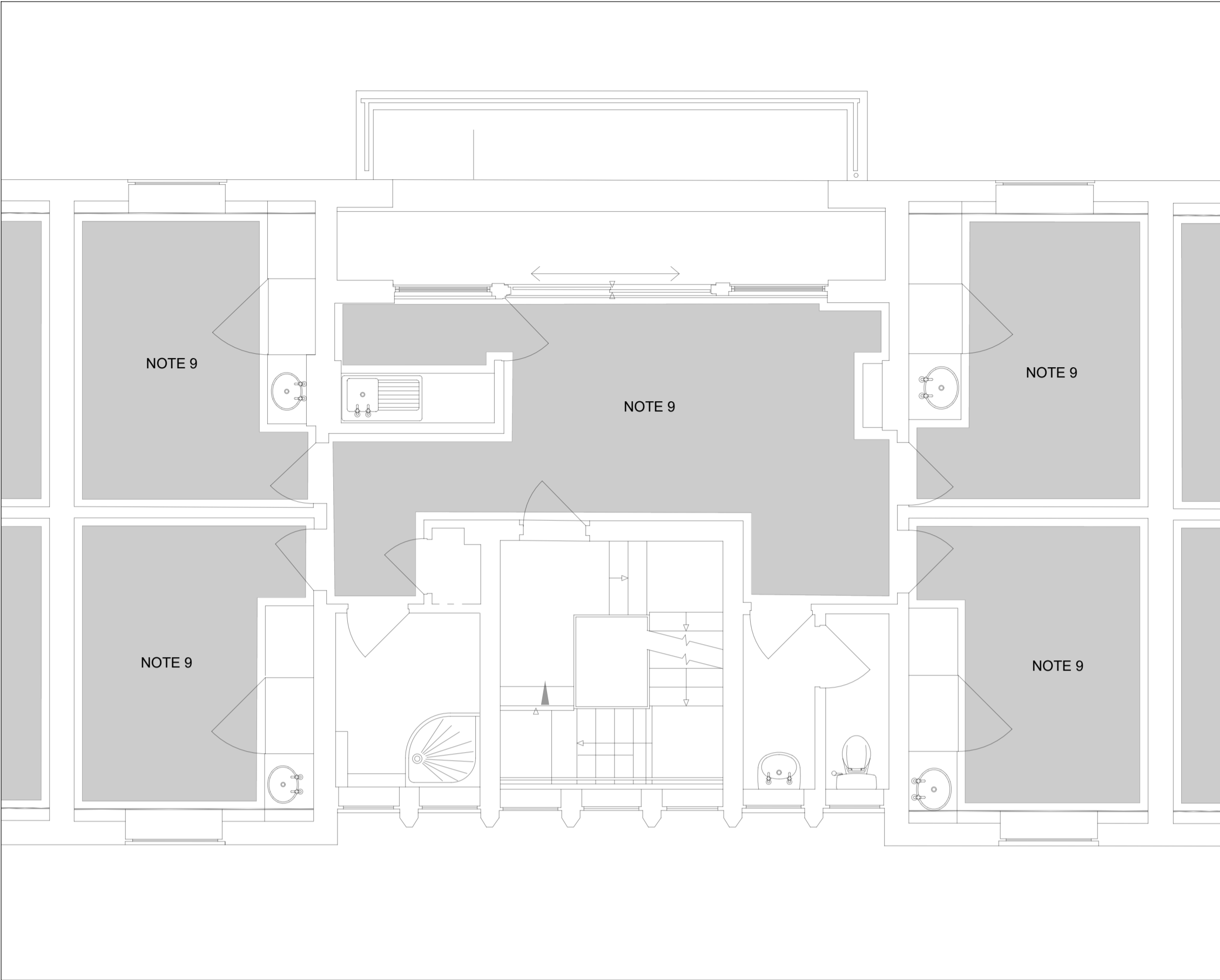
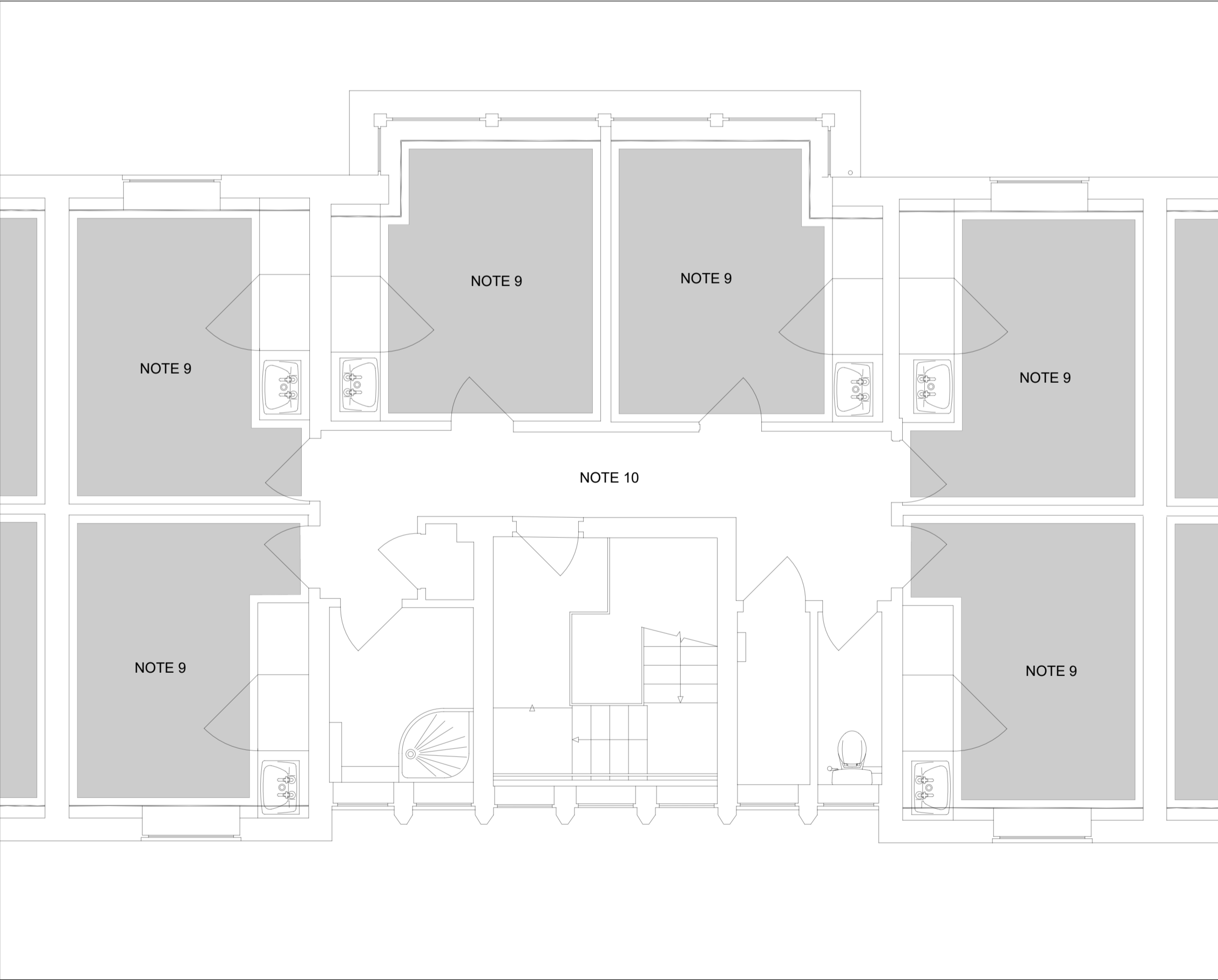


GROUND FLOOR



FIRST FLOOR



SECOND FLOOR

NOTES


- 1. READ THIS DRAWING IN CONJUNCTION WITH THE COVERSHEETS & SCHEDULES
- 2. ALL DIMENSIONS ARE IN mm
- 3. DO NOT SCALE FROM THIS DRAWING
- 4. PENETRATIONS <Ø100 NOT SHOWN
- 5. NOT USED
- 6. BOXING AROUND HIGH LEVEL PIPEWORK; FINISH TO MATCH EXISTING
- 7. 600x600 ACCESS PANEL AT LOW LEVEL
- 8. MECHANICAL CONTRACTOR IS RESPONSIBLE FOR ALL PENETRATIONS <Ø200
- 9. REMOVE EXISTING SCREED; REPAIR SUB-FLOOR TO CREATE A FLAT & LEVEL SURFACE; APPLY SELF-LEVELING COMPOUND WHERE FLOOR COVERING REQUIRES
- 10. CHASE FLOOR SCREED AS REQUIRED FOR UNDERFLOOR HEATING CIRCUITS BETWEEN MANIFOLD AND ROOMS; REPAIR TO MATCH EXISTING

LEGEND

- LTHW-F Low Temperature Heating Water - Flow
- LTHW-R Low Temperature Heating Water - Return
- GWS Gray Water Services
- BCWS Boosted Cold Water Service
- MCWS Mains Cold Water Service
- HWS Hot Water Service
- HWS-R Hot Water Service - Return
- DRN Drain
- DRN-CR Drain - Chemical Resistant
- GAS Natural Gas
- ACR Air-conditioning/Refrigeration
- Control Link
- AP Access Panel
- DG Door Grille
- DG-FR Door Grille - Fire Rated
- EXT Extract Air
- EXH Exhaust Air
- FD Fire Damper
- FFL Finished Floor Level
- FSD Fire & Smoke Damper
- ID Iris Damper
- OA Outside Air
- OBD Opposed Blade Damper
- SA Supply Air
- SBD Single Blade Damper
- UFH Under Floor Heating

Rev	Description	Date
T00	For Tender	23/10/30

Client	Bedford College
Site	Shuttleworth College Old Warden Park Biggleswade SG18 9DX
Project	PSDS3b



Pandaces
Construction & Engineering
Services Ltd

www.pandaces.co.uk
T: 01908 991130

Drawing Title		Ongley Hall BWIC
Drawing Ref 02-15 M-LX-14		
Revision T00	Date 2023/10/30	
Scale 1:50 at A1	Status For Tender	