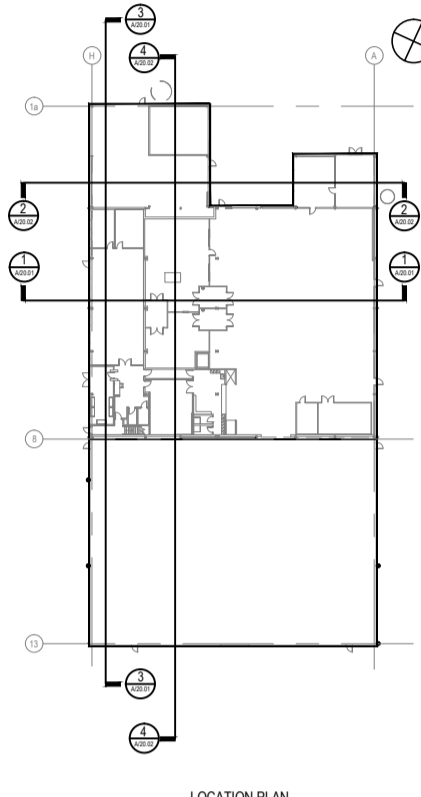


## NOTES

- DO NOT SCALE FROM THIS DRAWING.
- ALL MEASUREMENTS ARE IN MILLIMETRES UNLESS STATED OTHERWISE.
- THIS DRAWING IS TO BE READ IN CONJUNCTION WITH THE SPECIFICATION AND ALL RELEVANT ARCHITECTURAL, ELECTRICAL, MECHANICAL AND STRUCTURAL DRAWINGS.
- THE STRUCTURAL DESIGN DRAWN IS INDICATIVE. STRUCTURAL INFORMATION WILL FOLLOW AS AGREED WITH CCFE.



## SAFETY HEALTH AND ENVIRONMENTAL INFORMATION

For details of site-wide and general risks, to be read in conjunction with these notes, see Design Risk Register ref.

In addition to the risks normally associated with the types of work detailed on this drawing, note the following risks and information:

### CONSTRUCTION

C1)

C2)

C3)

It is assumed that all works will be carried out by a competent contractor working, where appropriate, to an approved method statement

C2	DETAIL 3 ADDED	24.08.15	GP	GHA	HL
C1	CONTRACT ISSUE	17.09.14	RH	GHA	HL

Rev	Revision Description	Date	By	Chkd	Auth
-----	----------------------	------	----	------	------

Status

## CONTRACT ISSUE

**ATKINS**  
Atkins Limited  
Chilbrook, Ouse Business Park  
Eynsham  
Oxon  
OX29 4AH  
England  
Telephone: +44 (0)1865 882828  
Fax: +44 (0)1865 883 060  
www.atkinsglobal.com

Copyright © Atkins Limited (2011)

Client

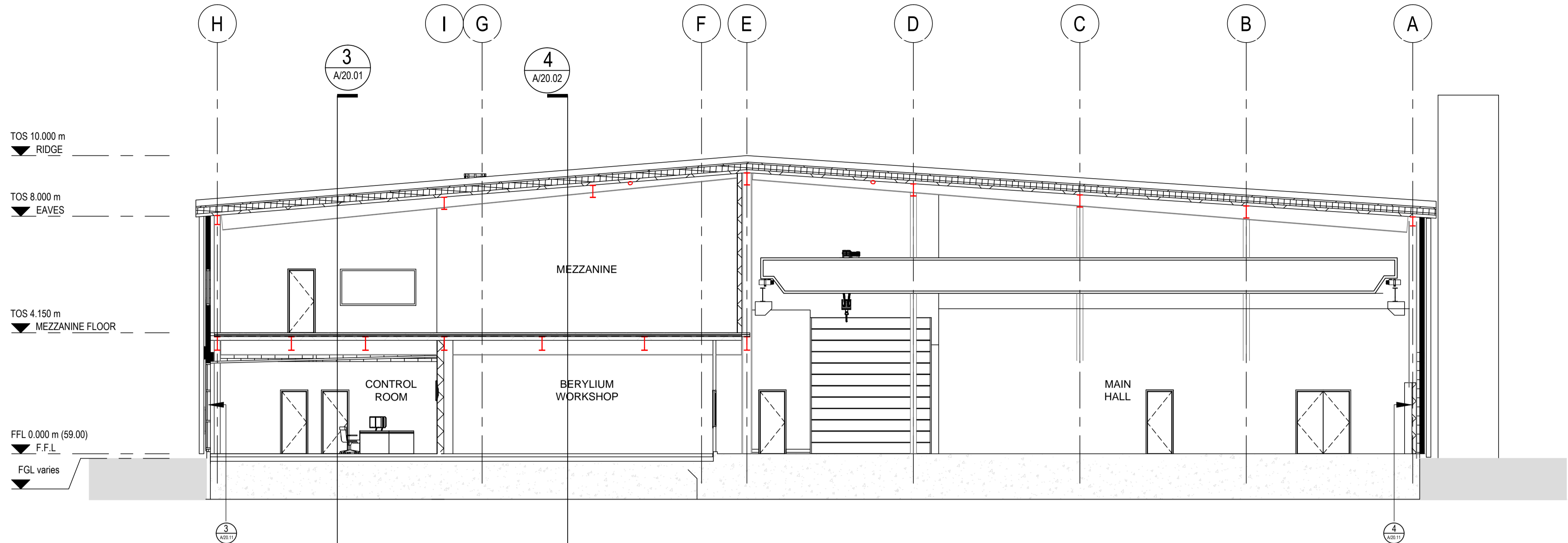
**CCFE**  
CULHAM CENTRE FOR FUSION ENERGY

Project  
**MATERIALS RESEARCH FACILITY (MRF)**

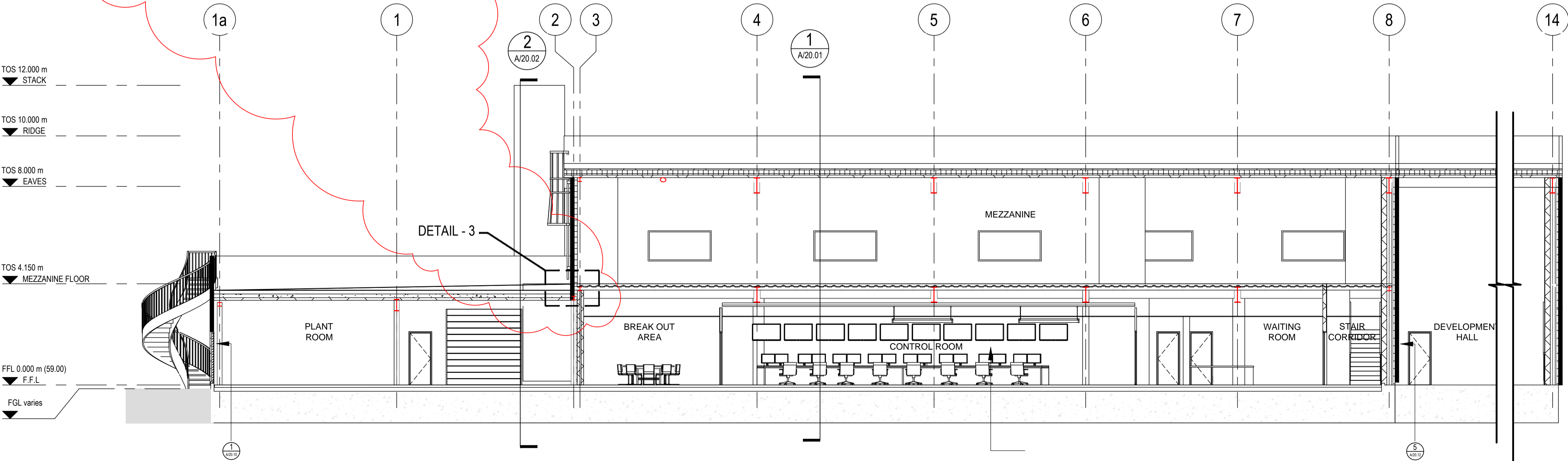
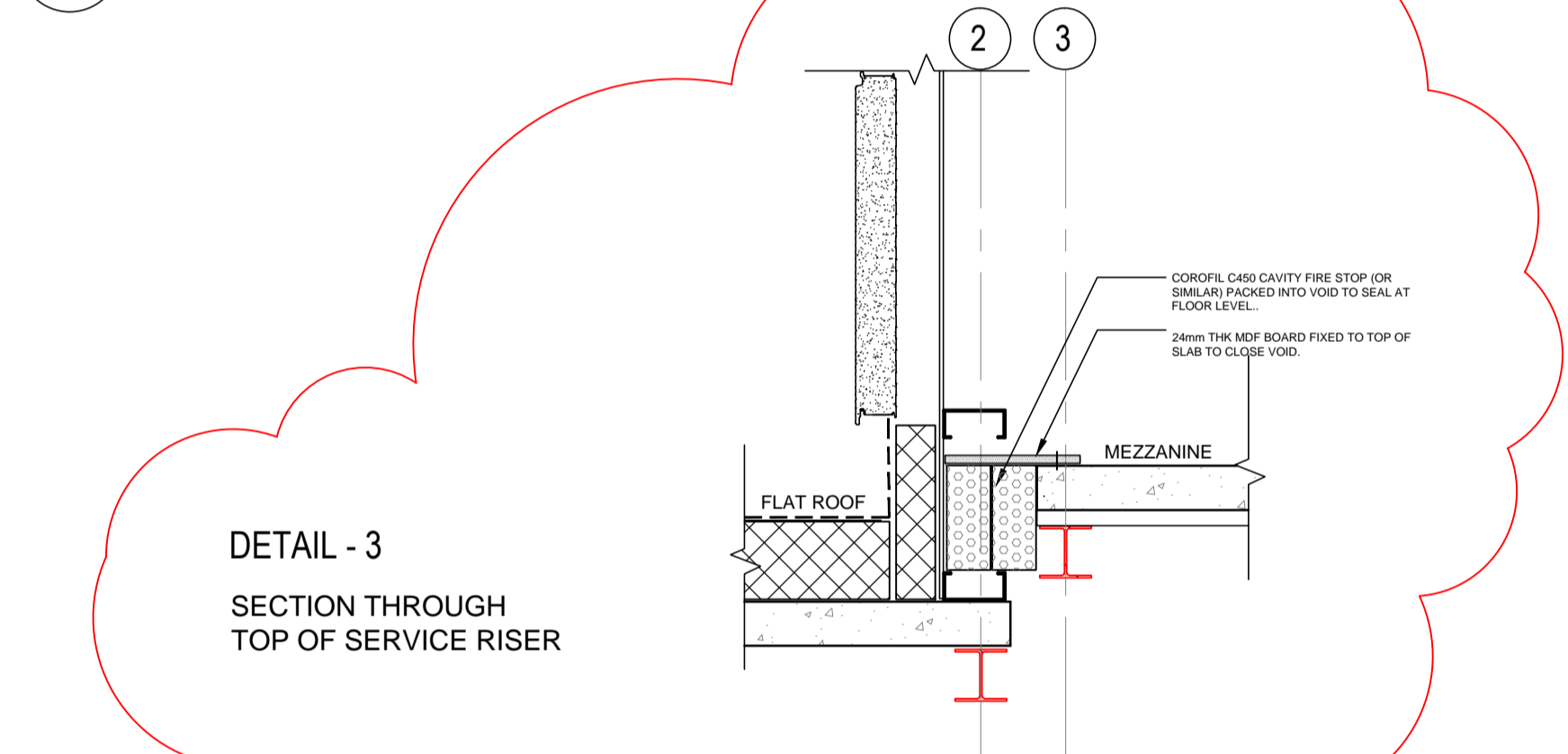
Drawing Title  
**PROPOSED SECTION 1 OF 2**

Original Scale	Original Size	Designed	Drawn	Checked	Authorised
As Indicated	A1	GA	JD	GA	HL
Office	OXF	Date	Date	Date	Date
		18/12/13	13.01.14	13.01.14	13.01.14

Project Number	Discipline	Type	Code	Dwg No.	Rev
5125043 / A / S / - / 20.01					C2



**SECTION 1**  
SCALE 1 : 100



**SECTION 3**  
SCALE 1 : 100