

Specification for grass cutting and strimming of main grass paths and other grassed areas at Wokingham Town Council's allotments sites as detailed below.

#### **GIPSY LANE**

*Please refer to the highlighted site plan.*

- 1) Twelve cuts required between March and October each year on the yellow highlighted area. Timing of cuts dependent on the rate of grass growth and prevailing weather conditions.
- 2) Eight strims over March to October each year on the pink highlighted orchard area. Great care is to be taken not to damage the fruit trees with grass cutting machinery.

#### **LATIMER ROAD**

*Please refer to the highlighted site plan.*

Twelve cuts required between March and October each year on the yellow highlighted area. Timing of cuts dependent on the rate of grass growth and prevailing weather conditions. Note that this includes the area in front of the sheds to the left of the entrance gate and between the sheds where practicable. The semi-rough area immediately behind the gate is not to be cut.

At times allotment gardeners may have to be asked to move their parked cars to facilitate the grass cutting.

#### **ORMONDE ROAD**

*Please refer to the highlighted site plan.*

- 1) Twelve cuts required between March and October each year on the yellow highlighted area. Timing of cuts dependent on the rate of grass growth and prevailing weather conditions.
- 2) Eight strims over March to October each year on the pink highlighted area at the base of the railings which separate the allotments from Barkham Recreation ground. Great care is to be taken not to damage the hedging plants on the recreation ground side of the railings with grass cutting machinery. For the avoidance of doubt this includes the area outside the allotment railings on the immediate right of the entrance as you approach from the road.

#### **ST. PAUL'S GATE**

*Please refer to the highlighted site plan.*

Twelve cuts required between March and October each year on the yellow highlighted area. Timing of cuts dependent on the rate of grass growth and prevailing weather conditions.

**All grass cuttings and arisings are to be removed from site after each cut unless arrangements are made by the contractor with individual allotment gardeners to deposit same in compost bins.**

**To gain access to these allotment sites the main gate padlock codes are:**

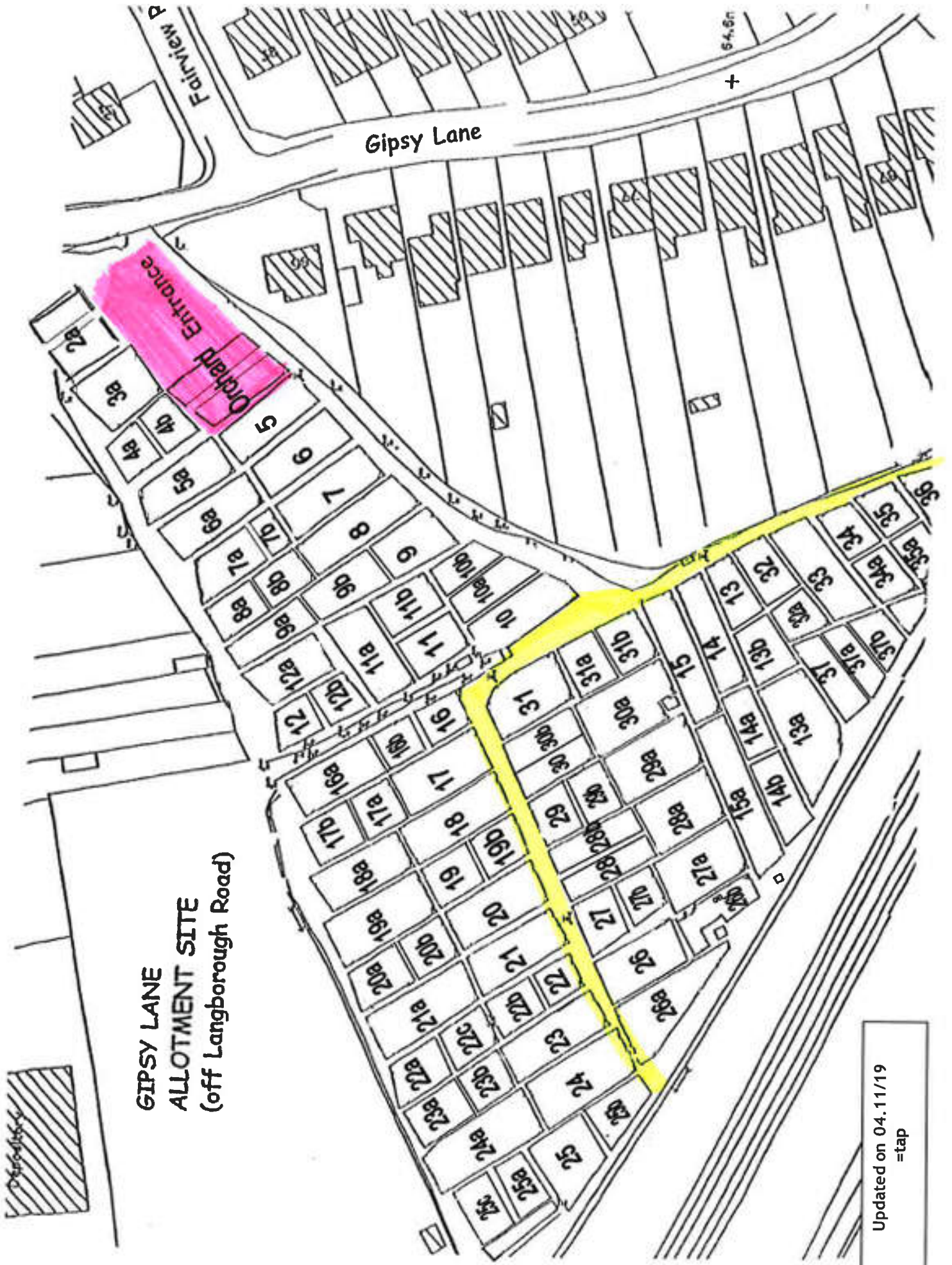
Allotment Site	Nearby Postcode	Padlock Code
Gipsy Lane	RG40 2BW	1602
Latimer Road	RG41 2XX	1603
Ormonde Road	RG41 2RA	1605
St. Paul's Gate	RG41 2YP	1606

Gipsy Lane

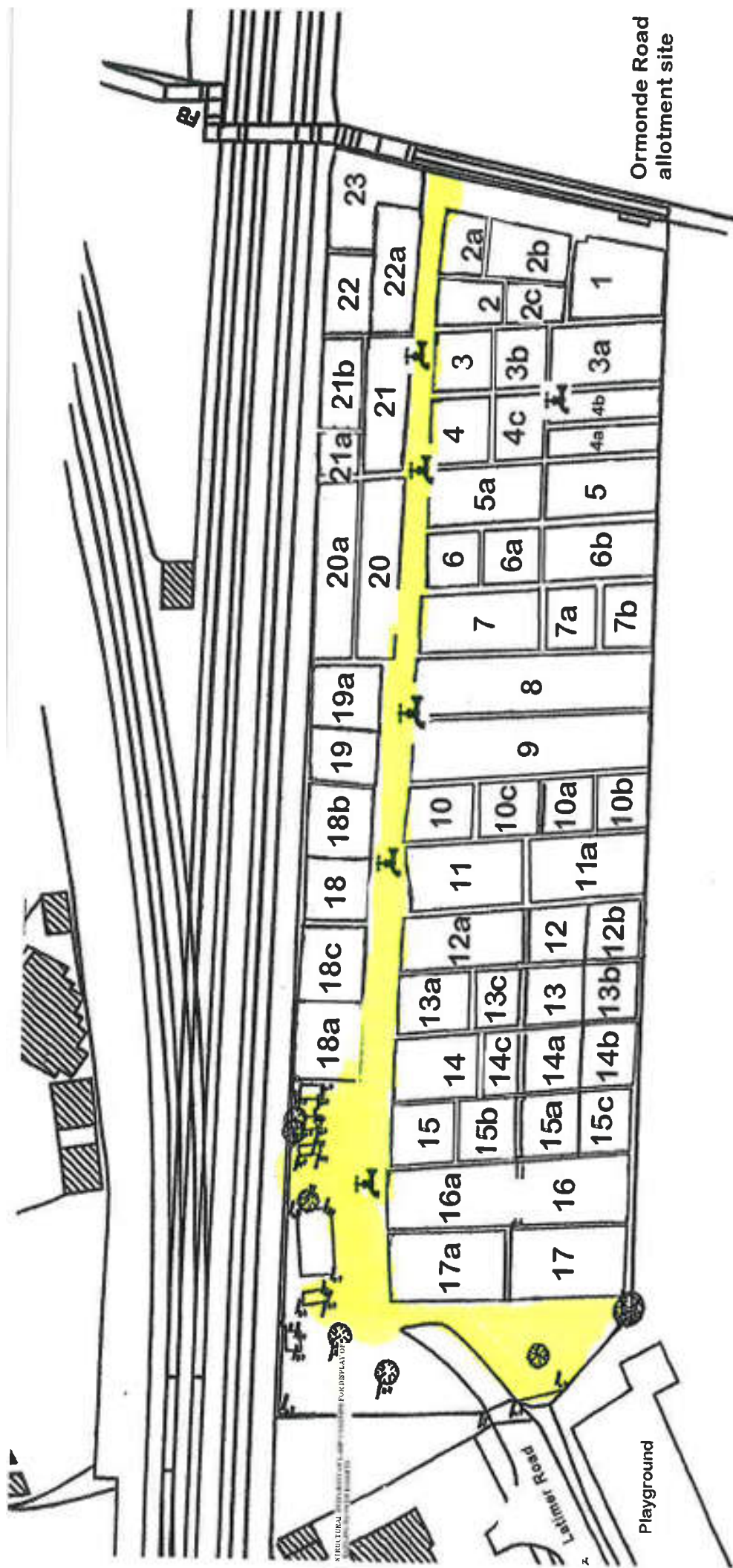
GIPSY LANE  
ALLOTMENT SITE  
(off Langborough Road)

Orchard Entrance

Updated on 04.11/19  
=tap







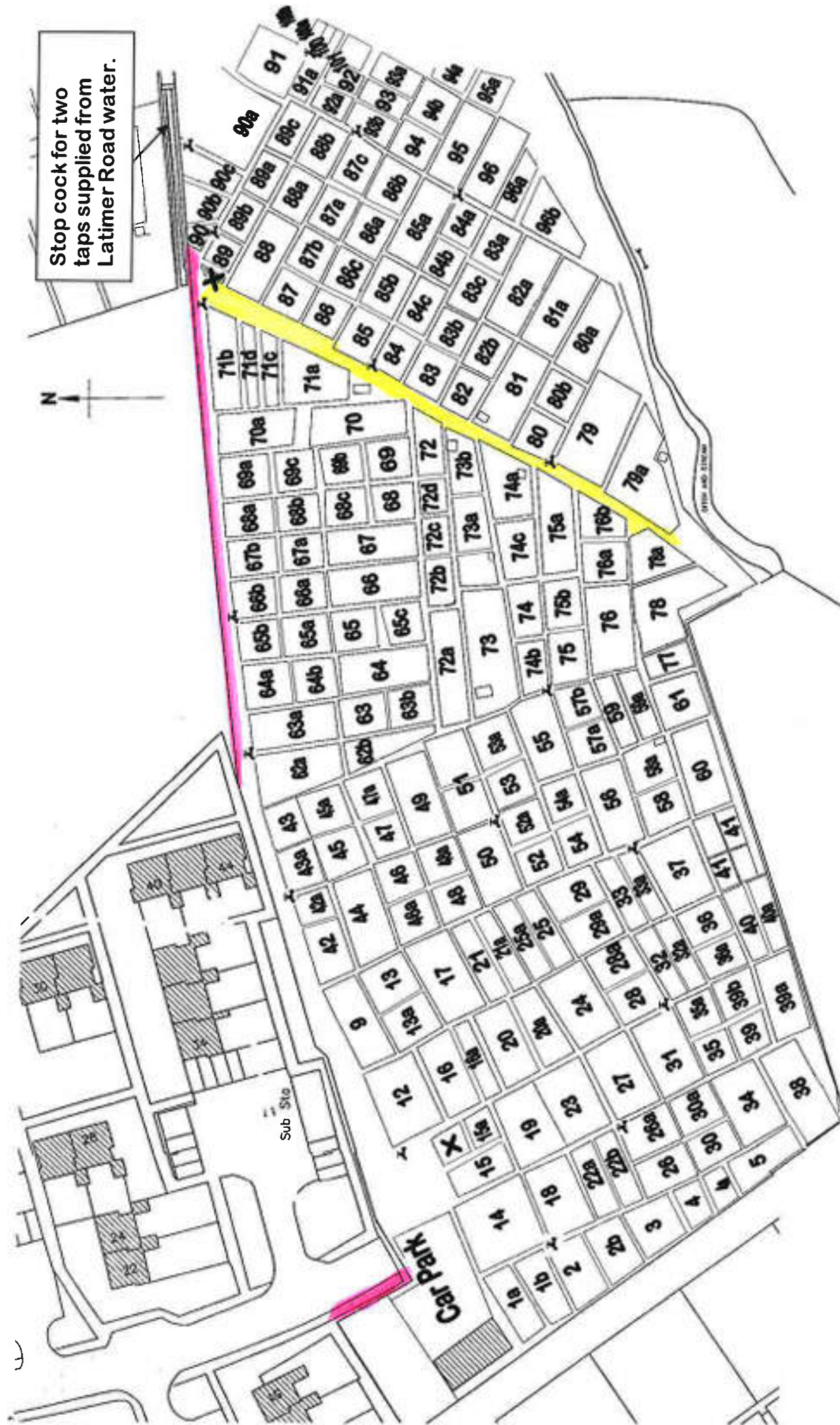
Ormonde Road  
allotment site

# LATIMER ROAD ALLOTMENTS

Recreation Ground



water point



# ORMONDE ROAD ALLOTMENTS

11.11/19, tap  
X site for manure deliveries



# ST PAUL'S GATE ALLOTMENTS

N

Burial Ground

ST PAUL'S GATE

Tap

Plot 1 not in use as an  
 area due to shade  
 and roots from nearby  
 trees; may have  
 for Holt Copse growing on  
 it

25.09/14

