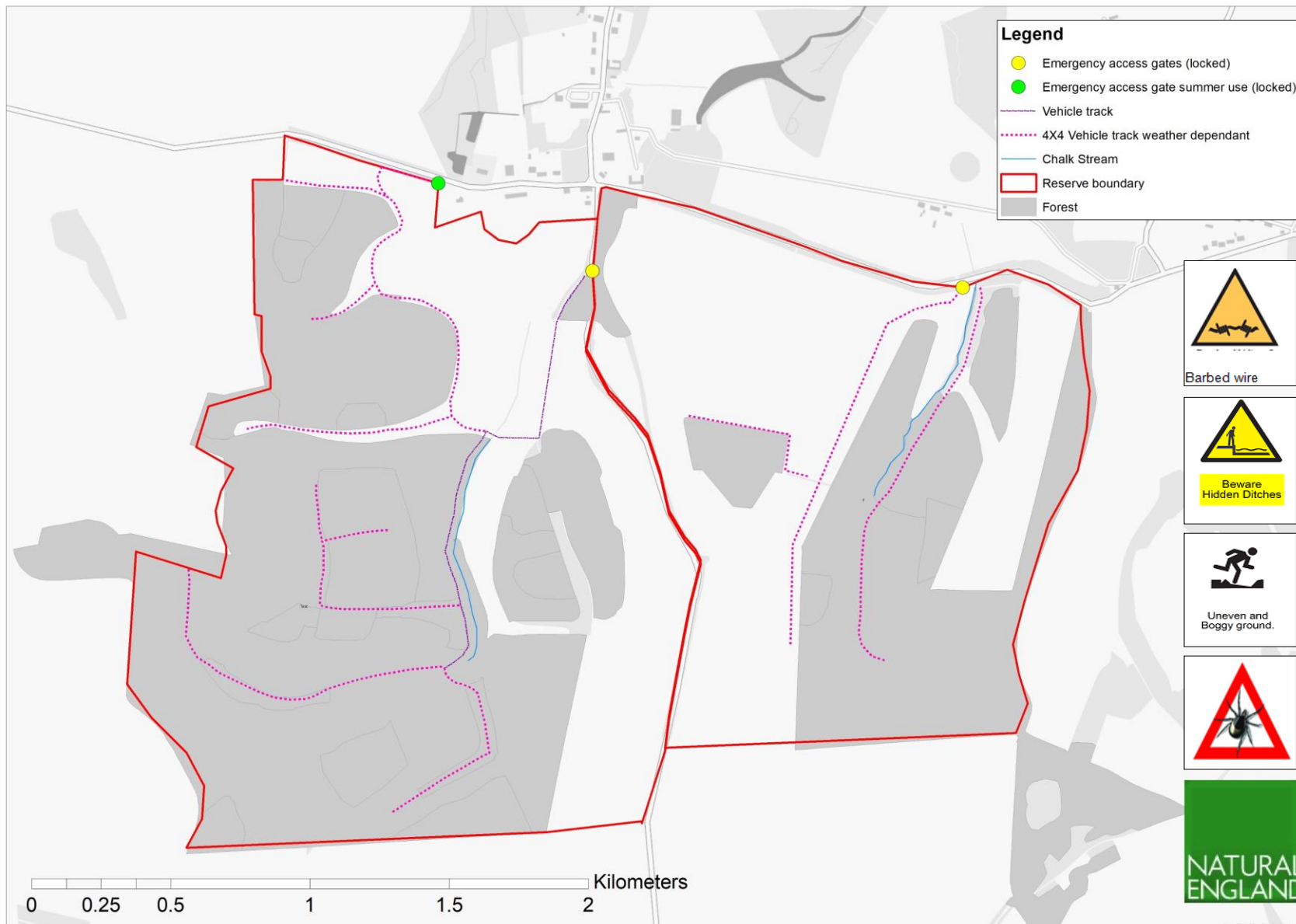


# Hexton Hills Emergency plan



## Gate entrance Instructions:

Call one of the NE key contacts who have mobile access to Gates 1 and 2.

## Gate 1 (Hexton Covers):

Hexton road gate

W3W:

Eyelashes.Infringe.Deleting

## Gate 2 (Meg Gate): Barton

road gate

W3W:

Scanning.Sparkles.Piglets

## Gate 3: For use in dry conditions only with off road vehicle:

Barton road, farm track

W3W:Cubs.Solids.Interview

Combination code:74120



Barbed wire



Beware Hidden Ditches



Uneven and Buggy ground.



## Key NE contacts

NE Senior Reserve Manager

Holly Bilcock

07388 955296

NE Reserve Manager

Matt butters

07350409351

NE Team Leader

Sarah Clarkson

07350409351

NE Duty Officer

0300 060 6000

## Site Hazards

**Weil's disease:** Cover any cuts and be aware disease can be present in water

**Ticks and biting/stinging insects:** Cover body appropriately, check for ticks, and be aware of Lyme's disease

**Trees:** Be aware in high winds

**Steep Slopes:** Some of the site in inaccessible by vehicles

**Rabbit holes, ant hills, uneven ground surface**

**All perimeter gates are locked**

**Helicopter landing sites to be determined by the pilot**

Grid Ref. (Centre of Site): TL088297

## Actions in an emergency

Call 999 for the Emergency Services and advise on location of incident including best access route – details on map.

**Report incidents to NE Enquiries on 0300 060 6000. This will direct to Duty Officer outside office hours.**

## Nearest 24hr Hospital with A and E:

Luton and Dunstable Hospital  
Tel:01582491166  
Lewsey Road  
Luton  
Beds  
LU4 0DZ

# Hexton Hills Emergency plan

