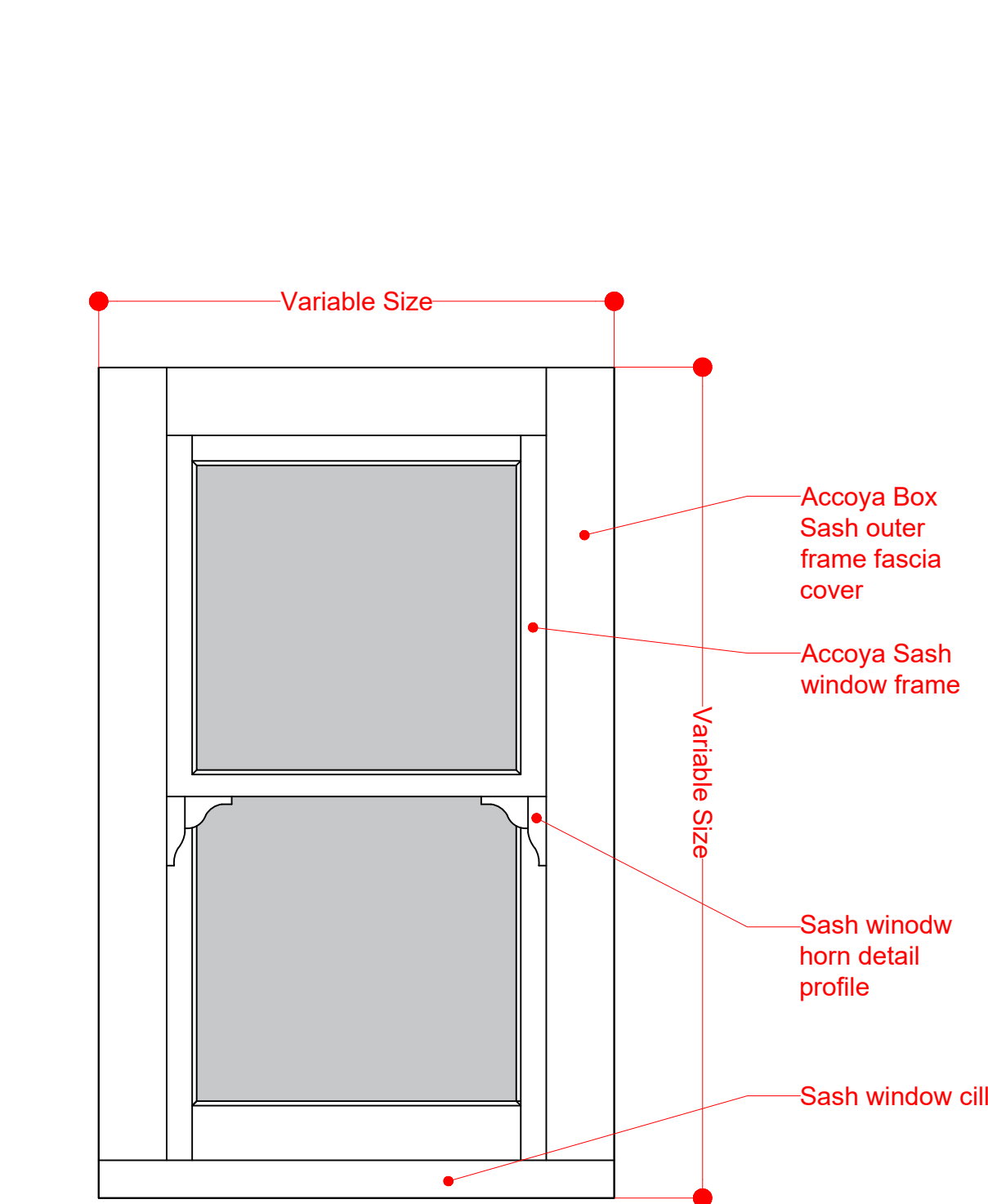
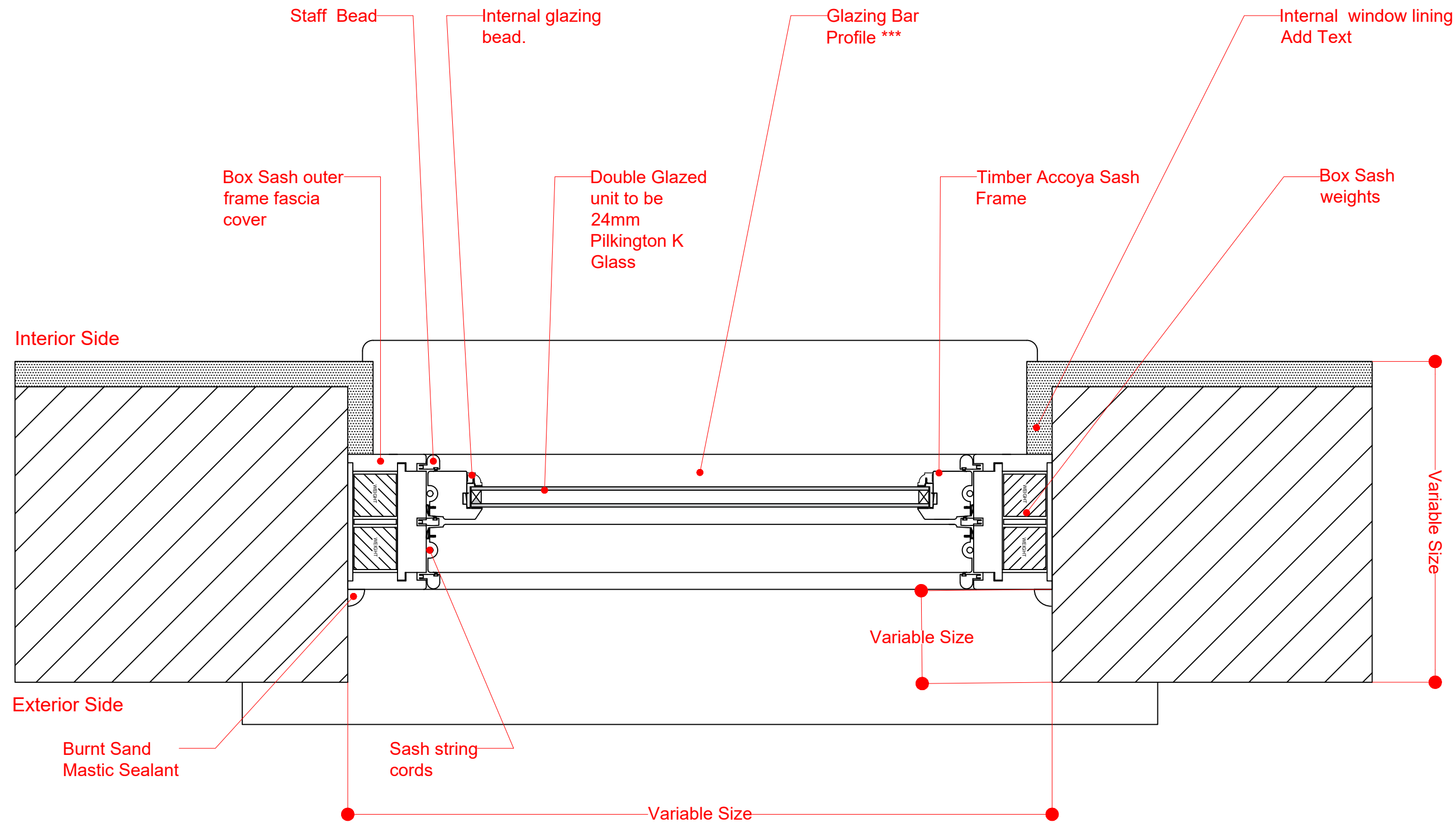




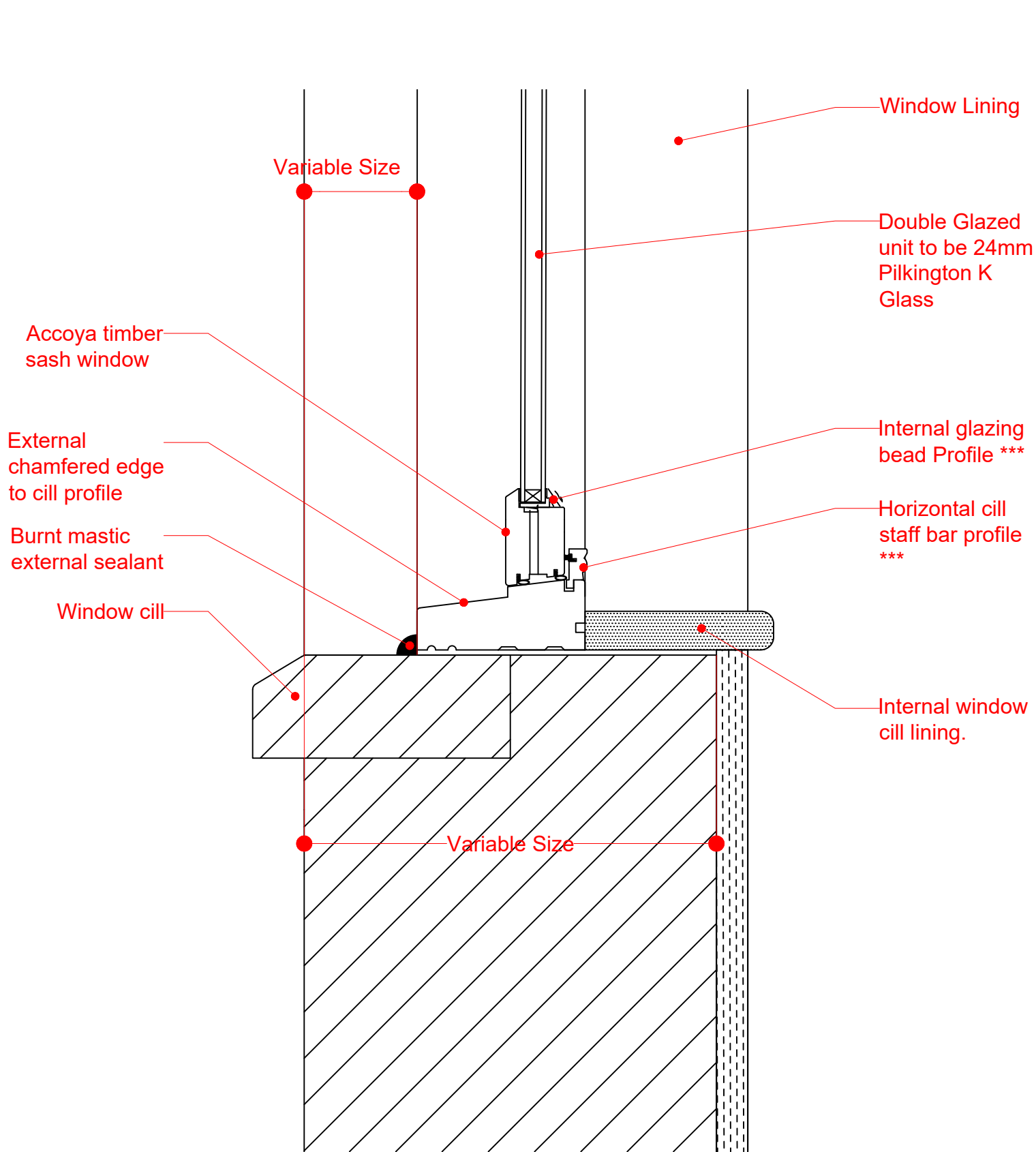
Note:
Do not scale from this drawing.
Dimensions are to be checked on site.
If in doubt please ask.



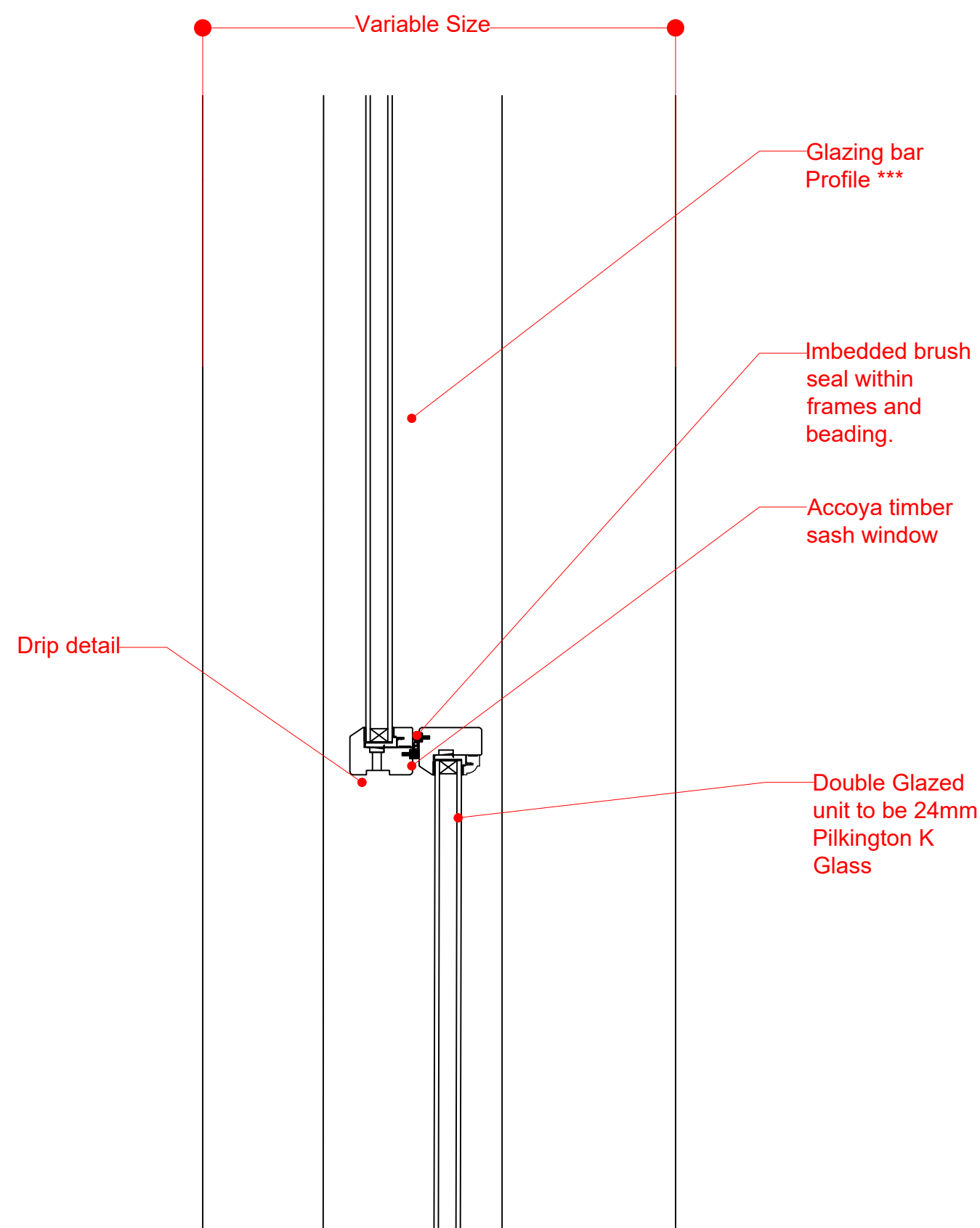
1 Sash Window Elevation
Scale 1:10 @A3



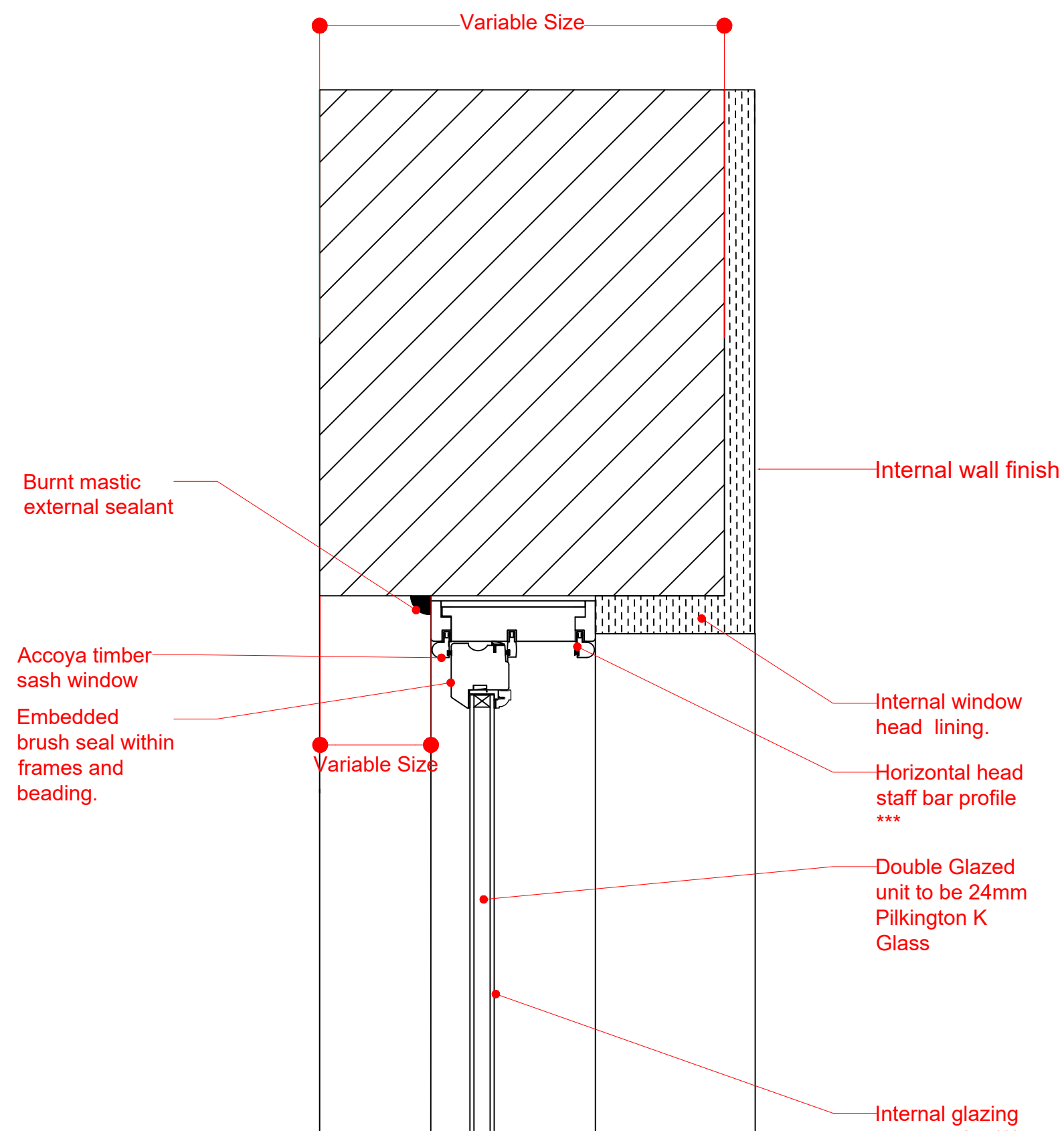
2 Sash Window Plan Detail
Scale 1:5 @A3



3 Sash Window Cill Detail
Scale 1:5 @A3



4 Top Sash Cill & Bottom Sash Head Detail
Scale 1:5 @A3



5 Sash Window Head Detail
Scale 1:5 @A3

Rev 11/12/2020 Tender Review
LB

Rev Date/Intls Details

© The moral rights of the author are hereby asserted.
This drawing and design is the sole property of Buttress Ltd and must not be reproduced without permission.
Buttress Ltd is Registered in England and Wales: 3363173

Buttress

41, Bengal St
Manchester
M4 6AF

T 0161 236 3303
E contact@buttress.net
W www.buttress.net

Project Title	Bacup Derelict Buildings		
Client	Rossendale Borough Council		
Location	Bacup		
Drawing Title	Box Sash Window - Double Glazed Detail Drawings -		
Date	10/12/2020	Scale	1:10 & 1:5
Checked	KC	Orig Paper Size	A1
		Status	Tender
Drawing ref	Job No	Drawing No	Revision
	8920	(31) 001	B