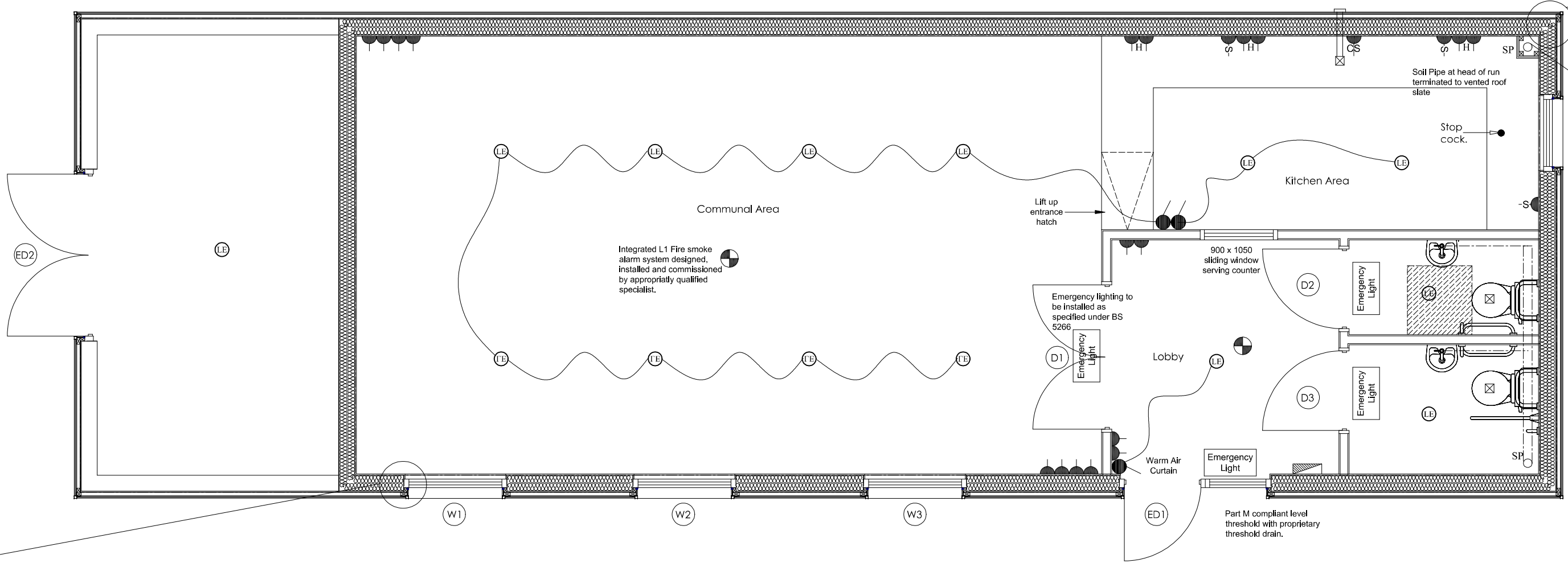
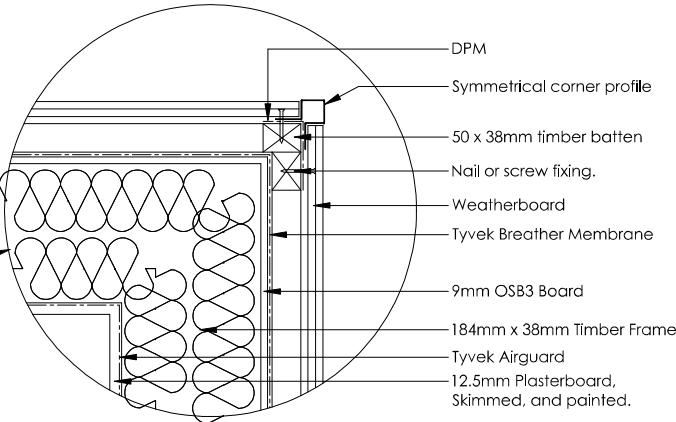
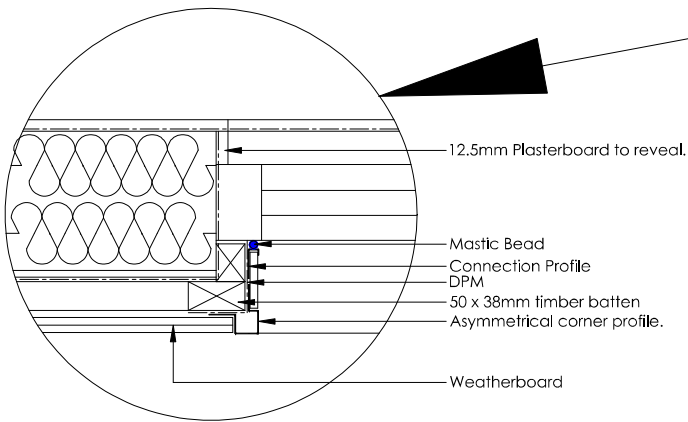


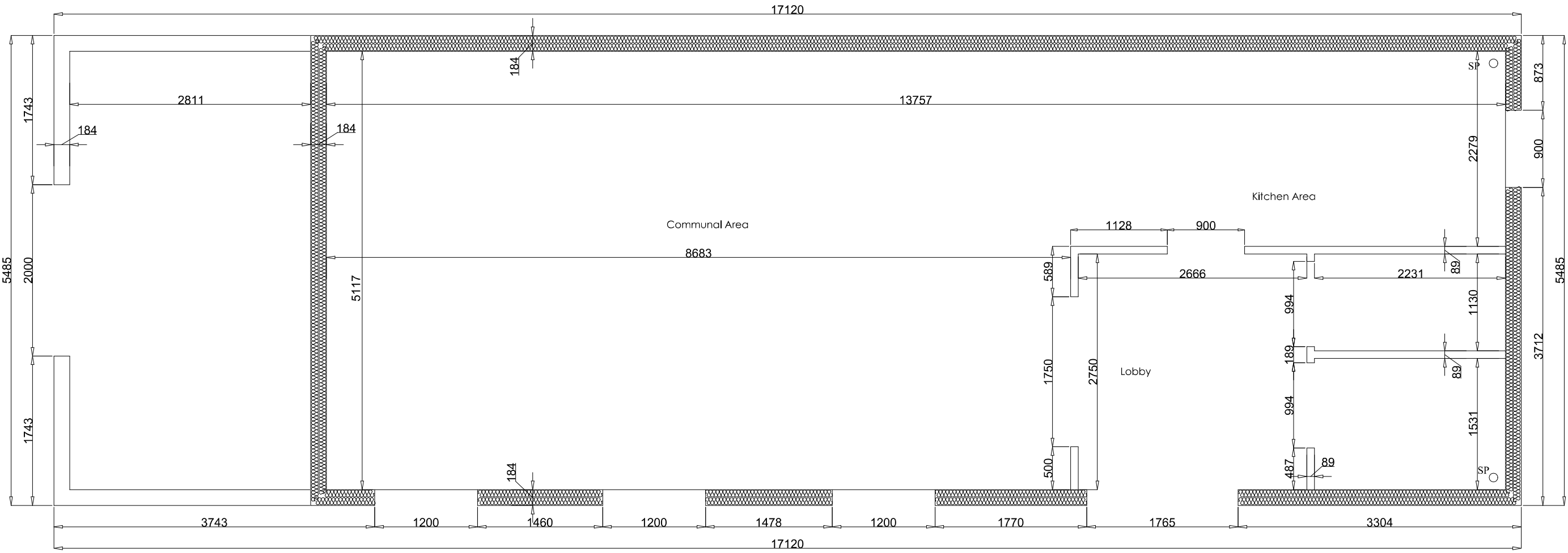
DOOR SCHEDULE - GROUND FLOOR										
Door Ref	Location	Door Leaf Size (w x h) mm	Structural Opening (w x h) mm	Lintel O/All Length (mm)	Rebated	Fire Door (with self-closing device)	Glazing		Safety Glass	Comments
							C	O		
ED1	Entrance Hall	914 x 2000	1765 x 2050	Timber	-	-	✓		yes	With Sidelight
ED2	Garage		2000 x 2100	Timber	-	-				
D1	Communal Area	2 No 838 x 1981	1750 x 2050	Timber	yes	yes				FD30
D2	WC	926 x 1981	994 x 2050	Timber	-	-				
D3	WC	926 x 1981	994 x 2050	Timber	-	-				
Notes:-							C = Clear			
44mm thick external doors, 40mm thick internal doors.							O = Obscure			
44mm thick internal glazed double doors with rebated meeting stiles.										
44mm thick firecheck doors with min 19x3mm plated stops.										
40mm thick double doors to wardrobes with butt jointed meeting stiles.										
Full architect's to be provided wherever possible.										
Specified fire resistance refers to complete door set as tested & approved by manufacturer.										
							FD30 Fire Door with self-closing unit.			Lintels to be IG insulated or similar approved lintels.
							FD30* Fire Door with NO self-closing unit.			Refer to Structural Engineers/ Lintel manufacturers lintel schedule for further details.

WINDOW SCHEDULE - GROUND FLOOR							
Win Ref.	LOCATION	Structural Opening (w x d) mm	Lintel O/All Length (mm)	Trickle Vent Size Area (sqmm)	Glazing C O	Safety Glass	Comments
W1	Communal	1200 x 1200	Stud	8000	✓	yes	Casement.
W2	Communal	1200 x 1200	Stud	8000	✓	yes	Casement.
W3	Communal	1200 x 1200	Stud	8000	✓	yes	Casement.
W4	Kitchen	900 x 1050	Stud	8000	✓	yes	Casement.
Notes:- Windows to habitable rooms to provide a minimum rapid ventilation area equivalent to 1/20th the floor area to the room it serves. All windows to be double glazed. All glazing to have a U-value of 2.0 W/m2K area weighted average. "E" = Escape windows to have an unobstructed openable area of not less 0.33sqm, with neither the height or width of the opening less than 450mm. Bottom of openable area not more than 1100mm above floor level. Easy clean hinges to be provided to all windows.							
C = Clear O = Obscure Lintels to be IG insulated or similar approved lintels. Refer to Structural Engineers/ Lintel manufacturers lintel schedule for further details.							



Ambulant W.C.s, as per approved document M1. To include all necessary pull cord alarms. Main light to be activated by motion sensors.

Type	Description
Single-gang Socket Outlet Low Level	
Two-gang Socket Outlet Low Level	
Two-gang Socket Outlet High Level	
Two-way Switch	
One-way Switch	
Three-way Switch	
Loft Light Switch With Indicator	
Telephone Point	
Television Aerial Socket	
Shaver Socket	
Ceiling Lighting Point	
L.V. Downlighter	
External Light	
Cooker Switch	
Consumer Unit	
Switched Fused Spur	
Power Outlet From Grid Switch.	
Grid Switch.	
Extractor Fan	
Door Bell	
Extractor Fan To Vent Tile.	
Cooker Hood Extractor Fan.	
Isolator switch for extract fan, high level.	
Alarm Control Panel	
Intruder Alarm Keypad	
Infr-red Sensor	
Smoke Detector/Alarm	
Low Energy Lighting Point	
Satellite Point	
Gas Point	
* First Fix Wiring Only	



Proposed Ground Floor Layout Plan
(Scale 1:50)