

Specification – Workshop Doors: Reference BUS003_0081_1.7



Background

Penzance Dry Dock (PDD) is famously steeped in history, currently being the oldest operational dry dock of its type in Europe but requires drastic investment after decades of neglect and dilapidations. While the surrounding shipyards, across the county and country have seen investment, PDD has slipped through the net time and time again.

PDD plans to complete a large refit by March 2025. PDD will become the engineering powerhouse that it once was, but with more abilities than ever before.

This facility has primally been ship repair only, but now we are supporting multiple areas of the market, ship repair, ship building, mass fabrication and most importantly training and skill development.

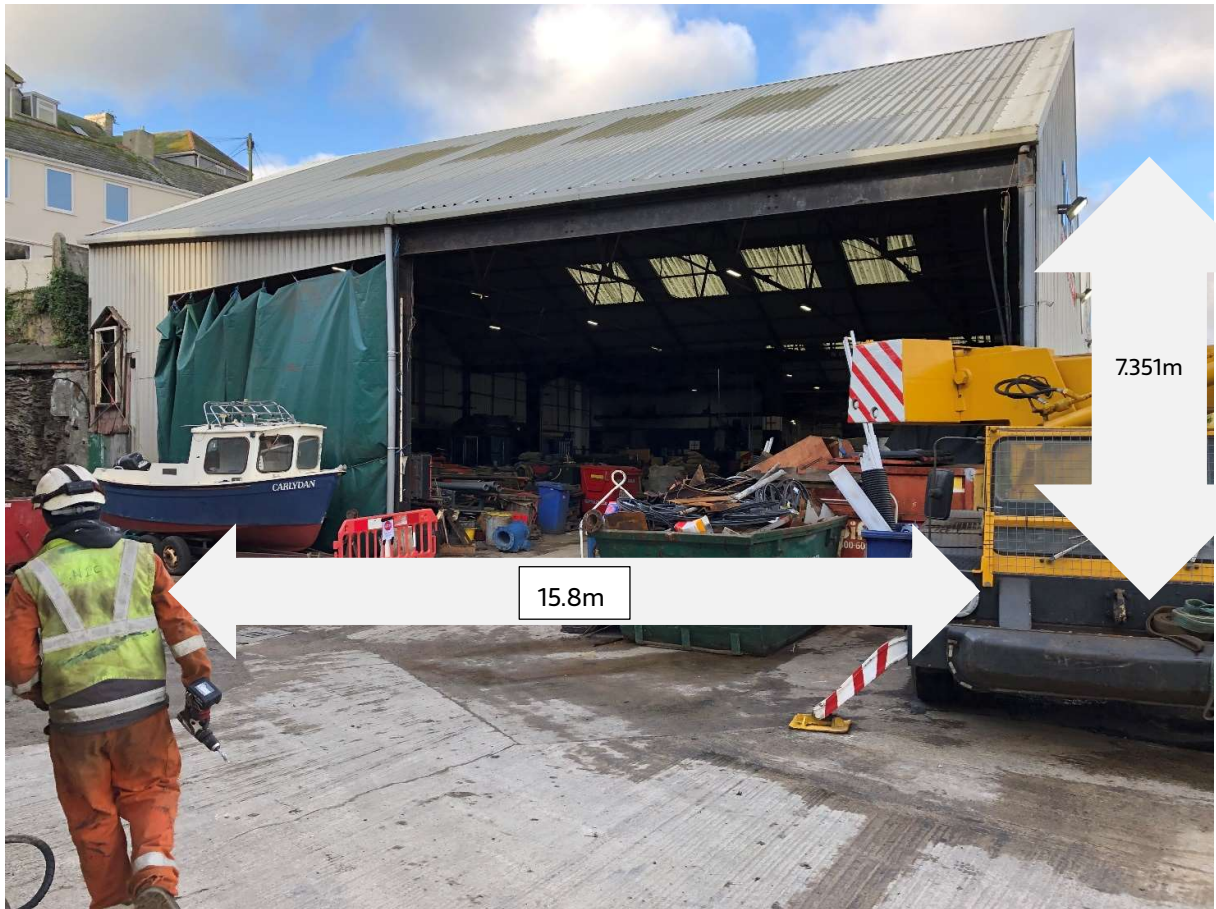
This capital investment, part-funded by the UK Government through the UK Shared Prosperity Fund, will see the site brought up to an even playing field with the rest of industry, with new, safer lifting systems and the dilapidations being rectified. We will see our efficiency drastically increased which in turn will assist in reducing our carbon footprint.

General Specification

Penzance Dry Docks is seeking the design, manufacture, supply and installation of industrial/ commercial bi-fold doors onsite to Penzance Dry Dock.

For the purposes of pricing as part of this quotation, door sizes to be as follows:

- 1x door





- Fire retardant
- Insulated
- Manual/ electric mechanism
- Suitable for marine environment
- Shipping
- Installation

As noted, the supplier will be responsible for overall design and manufacture to suit the client onsite requirements and as such **will need to undertake an onsite survey prior to commencement of the design and manufacture.**

Doors to be designed considering BS EN 12453:2017 – (Industrial, commercial and garage doors and gates. Safety in use of power operated doors. Requirements and test methods (or equivalent)) and appropriate Health and Safety considerations:

<https://www.hse.gov.uk/safetybulletins/revision-standards-powered-doors.htm>

As part of the installation this will include any necessary and related frames and assembly infrastructure.

Doors to be able to be operated manually and electrically operated with emergency stop. As part of the installation to include commissioning of the doors, which will also require the necessary electrical wiring and certification. This will include ensuring all relevant safety tests are undertaken on the electrical infrastructure.

All electrical components shall be tested and all wiring, connections etc. should be certified safe and carried out by a suitable qualified technician, in line with suitable trade body such as National Inspection Council for Electrical Installation Contracting (NICEIC) <https://niceic.com/>.

Prior to connecting with any electrical supplies all necessary checks and tests must be carried out.

Fire regulations: Doors to be to BS EN 16034:2014 or equivalent – (Pedestrian doorsets, industrial, commercial, garage doors and openable windows. Product standard, performance characteristics. Fire resisting and/or smoke control characteristics)

Doors to be provided with a minimum warranty of 2 year from being commissioned and to have a minimum design life expectancy of 10 years subject to maintenance in line with the manufacturer's recommendations. The doors, fixtures and accessories will be installed into a coastal outdoor external marine environment continually open to the elements and they supplied doors must be suitable for such a setting.

As part of the suppliers bid, please provide details on how this will be achieved, for example assuming steel doors, the recommended gauge of steel, doors and frames to be galvanised, motors to be housed in casings, etc.

Site security is important for a number of reasons, including working on Ministry of Defence contracts, the value of goods housed within the buildings, and for overall safety. As such the doors must be suitably secure, having a recognised security rating or equivalent evidence provided as part of the bidders' submission.

Specific requirements of this tender, which the tenderers will need to satisfy, and the successful tenderer will be required to deliver on are:

- A key feature for any supply provided will be the provision of spare parts being readily available.
- Details of lead time is essential.
- Evidence that the proposed products are proven concept which can operate in the marine environment akin with the drydock site.
- Costs to include:
 - o Design (including site survey).
 - o Manufacture
 - o Installation
 - o Commissioning, including electrical wiring.

- The design, materials, installations, inspections, to comply with all relevant Regulatory requirements and standards e.g. British Standards (BS), European Standards / Norm (EN), international Standards Organisation (ISO) or equivalent.
- Work to be carried out during normal working hours. Installation to be completed by 31 March 2025.