

© This drawing is Copyright. It should not be relied on or used in circumstances other than those for which it was originally commissioned. Wadebridge School accepts no responsibility for this drawing to any party other than the person(s) by whom it was commissioned.

DO NOT SCALE

NOTES

DRAWING NO	PCGC 4153/18/303	REVISION	A
SCALE	1:50		

Floor Plan as Proposed Catering Equipment & Service Layouts

PROJECT MANAGER P. Luke WILKS MCBOS. Dip. Surv.

ORIGINATOR PL

Wadebridge School Block 1 Junior Kitchen and Dining Room Refurbishment.

Miss Tina Yardley B.A. Hons. HEADTEACHER Gonvena Hill, Wadebridge, Cornwall PL27 6BG



REV	DATE	NATURE OF REVISION
0	30-05-2018	ORIGINAL
A	01-06-2018	Survey & counter arrangement changed.

REVISIONS

0/105 Circ. Corridor

- KEY TO ELECTRICAL AND FIRE SYMBOLS
- ⊙

Manual Call Point with Protective Cover

⊙

Optical Smoke Detector

⊙

Optical Smoke Detector with Integrated Base Sounder.

⊙

Heat Detector

⊙

Heat Detector with Integrated Base Sounder.

⊙

Wall mounted Open Area Sounder (Internal)

⊙

Input/output unit

⊙

Electro Magnetic Door Closer Device with Input/output unit

⊙

Existing dedicated Glass Change Bell system with grey sounders.

⊙

Gas Alarm Control Unit

⊙

Gas Alarm

⊙

Emergency Gas Knock off switch

⊙

Maintained Fire Exit Sign

⊙

Heating Sensor

⊙

Data Point

⊙

Electrical Distribution Board

⊙

Telephone Point

⊙

Wall Mounted Electric Fan Heater and Controller

⊙

Power Switch above Walk in Freezer

⊙

Warning Cupboards Connection Unit

⊙

Walk in Freezer Temperature Gauge

⊙

Co-ax Plate
- ⊙

Single Way Switch
- ⊙

Electrical Test Switch
- ⊙

Pull Cord Switch
- ⊙

Two way Switch
- ⊙

Emergency Remote Emergency Light
- ⊙

LED Panels fixed with in 600 x 600mm ceiling grid
- ⊙

LED Panels with emergency light capability and external LED indicator fixed with in 600 x 600mm ceiling grid to operate on battery.
- ⊙

Blanking Plate
- ⊙

Single switched Socket Outlet
- ⊙

Double Switched Socket Outlet
- ⊙

Switched Fused Spur with Neon Indicator
- ⊙

Switched Fused Spur
- ⊙

Control Box Power Switch
- ⊙

Unswitched Outlet to Fused Spur
- ⊙

above with neon Indicator
- ⊙

Heater Fan Single Switched Socket Outlet
- ⊙

Dishwasher Dosing Unit
- ⊙

Three Phase Dishwasher Supply Unit
- ⊙

Kitchen and Extraction Canopy Light fittings
- ⊙

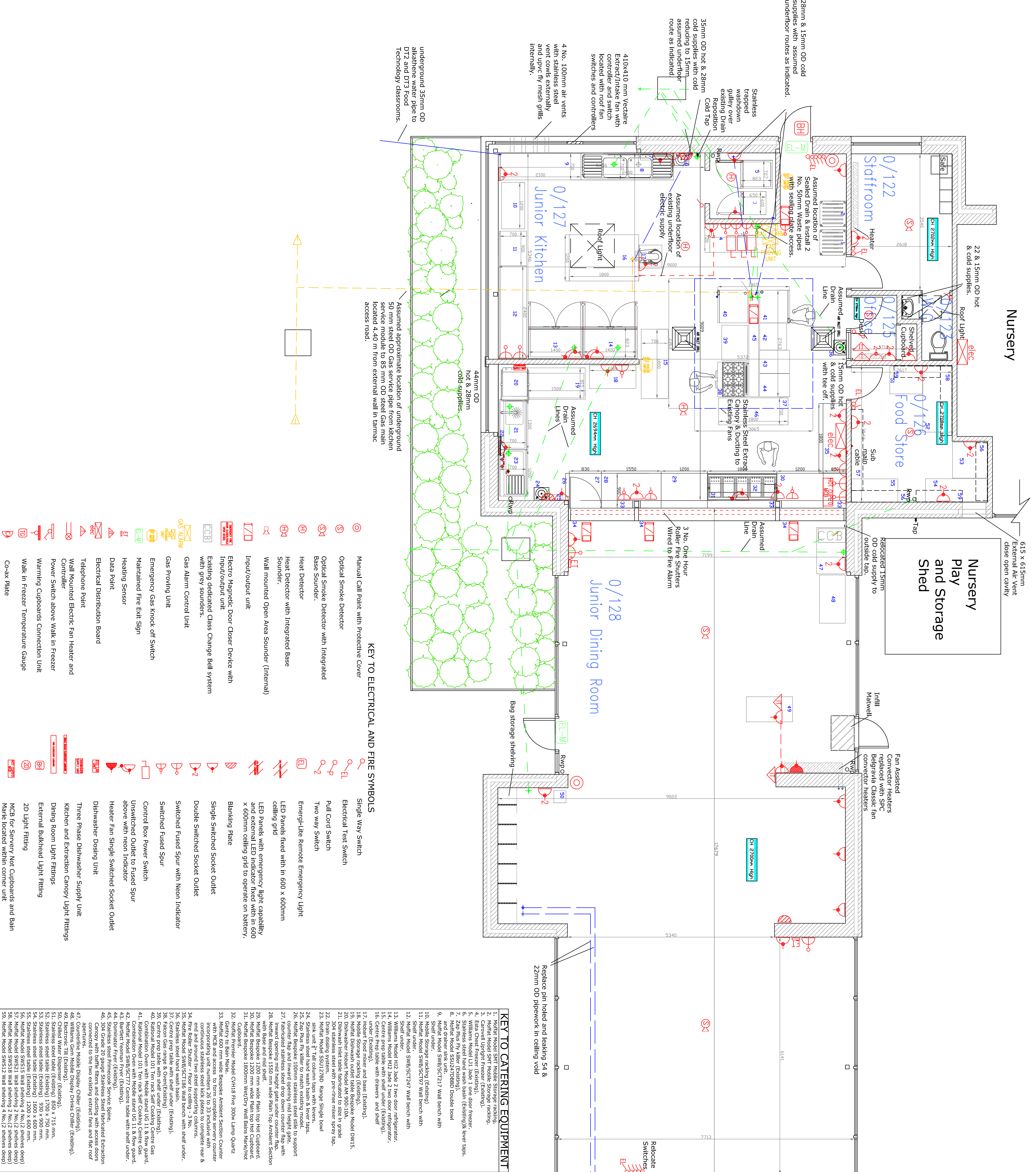
Dining Room Light Fittings
- ⊙

External Bulkhead Light Fitting
- ⊙

2D Light Fitting
- ⊙

MGB for Servery Not Cupboards and Bain
- ⊙

Marle located within corner unit



KEY TO CATERING EQUIPMENT

1. Mofra Model SW12 Mobile Storage rack.
2. Mofra Model SW12 Mobile Storage rack.
3. Carroll Upright Freezer (Existing).
4. Elexa Chest Freezer (Existing).
5. Mofra Model SW12 Mobile Storage rack.
6. Zap Plus Fry Kiler (Existing).
7. Zap Plus Fry Kiler (Existing).
8. Stainless steel hand wash basin (Existing) & lever taps.
9. Mofra Model SWB/SC217 Wall bench with shelf under.
10. Mofra Model SWB/SC217 Wall bench with shelf under.
11. Mofra Model SWB/SC217 Wall bench with shelf under.
12. Mofra Model SWB/SC217 Wall bench with shelf under.
13. Williams Model H12 Jade 2 two door refrigerator.
14. Williams Model H12 Jade 2 two door refrigerator.
15. Williams Model H12 Jade 2 two door refrigerator.
16. Centre prep table with drawers and shelf under (Existing).
17. Centre prep table with drawers and shelf under (Existing).
18. Mofra Dishwasher outlet table Bespoke Model DW15.
19. Mofra Dishwasher outlet table Bespoke Model DW15.
20. Dishwasher Hobset Model AW 900-10X.
21. Dishwasher Hobset Model AW 900-10X.
22. Dishwasher Hobset Model AW 900-10X.
23. Dishwasher Hobset Model AW 900-10X.
24. Stainless steel hand wash basin & lever taps.
25. Zap Plus Fry Kiler to match existing model.
26. Centre prep table with drawers and shelf under (Existing).
27. Fabricated stainless steel drop down counter flap with lower opening and height gate.
28. Centre prep table with drawers and shelf under (Existing).
29. Mofra Bespoke 1200 mm wide Plan Top Hot Cupboard.
30. Mofra Bespoke 1200 mm wide Plan Top Hot Cupboard.
31. Mofra Bespoke 1800mm wide Dry Wall Bench with Cupboard.
32. Mofra Premier Model CW418 Five 300w Lamp Quartz.
33. Mofra 600 mm wide Bespoke Ambient section counter with MGB and access to form complete survey counter continuous stainless steel kick plates to complete rear & end and around two steel supporting columns.
34. Fire Probe Sounder Floor to ceiling - 3 No.
35. Fire Probe Sounder Floor to ceiling - 3 No.
36. Stainless steel hand wash basin.
37. Centre prep table with shelf under (Existing).
38. Centre prep table with shelf under (Existing).
39. Centre prep table with shelf under (Existing).
40. Rational Model 101 Ten rack self Cooking Centre gas.
41. Combination Oven with mobile stand UC 11.8 flow guard.
42. Combination Oven with mobile stand UC 11.8 flow guard.
43. Mofra Model SWB/SC217 Centre table with shelf under.
44. Dominator Fryer (Existing).
45. Stainless steel Primocook Service Spine.
46. 304 Grade 20 gauge Stainless Steel fabricated Extraction connected to the two existing extract fans and flat roof apertures.
47. Williams Gem Mobile Display Chiller (Existing).
48. Williams Gem Mobile Display Chiller (Existing).
49. Electronic Tilt (Existing).
50. Chilled Water Dispenser (Existing).
51. Chilled Water Dispenser (Existing).
52. Stainless steel table (Existing) 930 x 900 mm.
53. Stainless steel table (Existing) 1700 x 720 mm.
54. Stainless steel table (Existing) 1200 x 600 mm.
55. Mofra Model SW12 Wall shelving 4 No. (2 shelves deep).
56. Mofra Model SW12 Wall shelving 4 No. (2 shelves deep).
57. Mofra Model SW12 Wall shelving 4 No. (2 shelves deep).
58. Mofra Model SW12 Wall shelving 4 No. (2 shelves deep).
59. Mofra Model SW12 Wall shelving 4 No. (2 shelves deep).