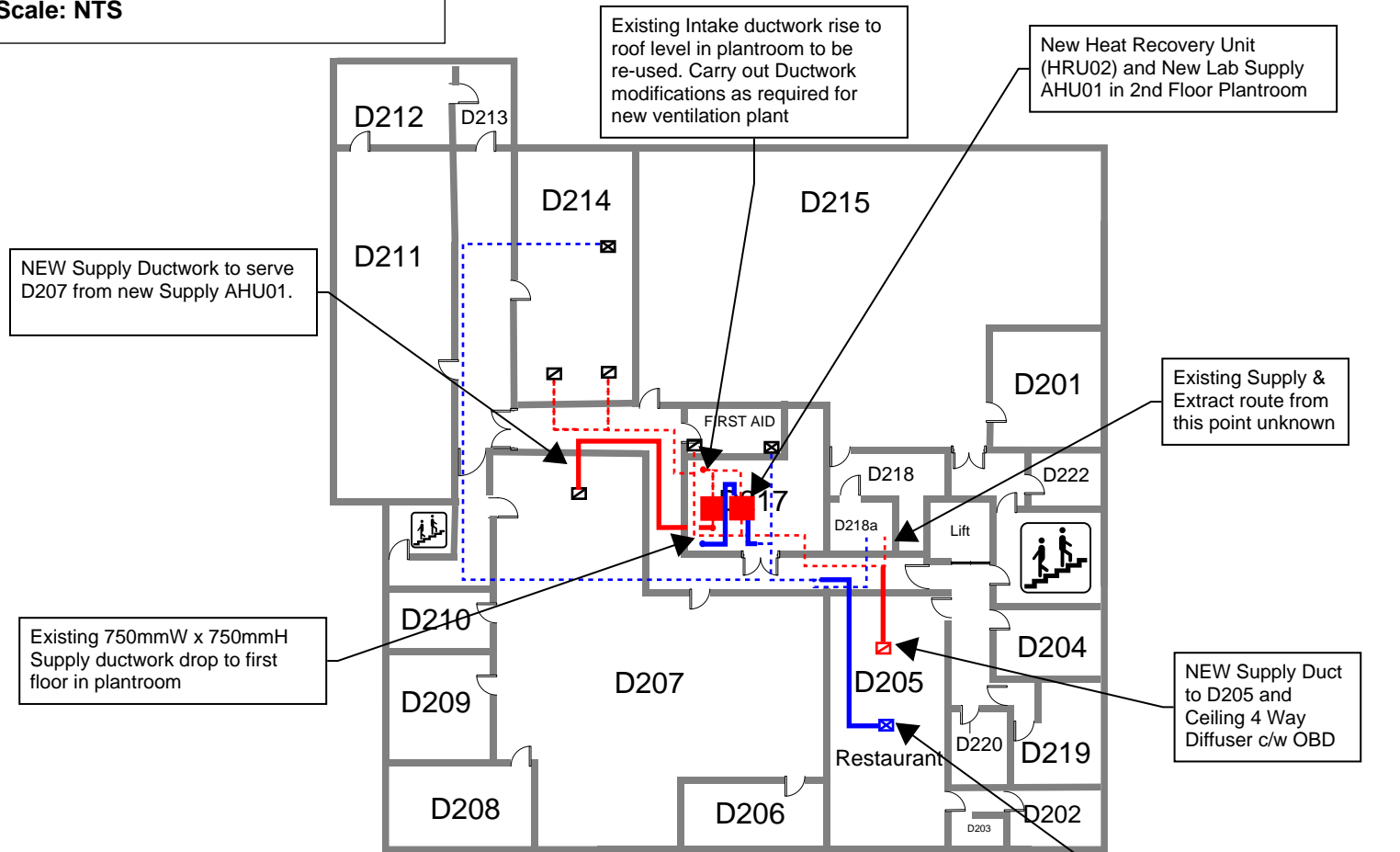


# PROPOSED INDICATIVE VENTILATION CHANGES

Project: Environment Agency, Leeds  
DRG Ref: M06  
Scale: NTS

## 2<sup>nd</sup> Floor plan



### KEY

- Existing Extract Ductwork retained (indicative only)
- Existing Supply Ductwork retained (indicative only)
- NEW Extract Ductwork (indicative only)
- NEW Supply Ductwork (indicative only)
- Existing Supply Grille to be replaced with NEW 4 Way Diffuser c/w OBD (indicative only)
- Existing Extract Grille to be replaced with NEW Eggcrate Grille c/w OBD (indicative only)
- NEW 4 Way Diffuser (indicative only)
- NEW Eggcrate Grille (indicative only)

NEW Heat Recovery Unit (Nuaire or equal and approved) c/w motorised intake dampers, variable speed supply/extract fans Filters, LTHW Heating Coil, Integrated Controls, 900mmL Attenuation mounted in Plantroom to serve Second Floor 'non' Lab' Areas. Indicative Airflow Duty: 0.350m<sup>3</sup>/s

NEW Exhaust from new HRU to roof level exhaust louvre to atmosphere. New ductwork to follow existing route

### Proposed SF Heat Recovery Unit HRU02 Indicative Ventilation Schematic

