

Scope of Works

As part of the tender pricing process we would request that each contractor visits site to check on the existing planting to validate their tender price.

Soft Landscaping

The soft landscaping within the play park boundary is heavily overgrown and requires tidying to enable plants to flourish and new planting to be introduced over the coming years.

The planting is currently a mix of weeds and structural plants set in ground level beds and raised planters.

These are interwoven to form a mass of weeds overpowering the plants.

At present we believe the site has the following species of weeds:

- Dandelions
- Bindweed
- Mixed Grasses
- Ivy
- Nettles
- Creeping Thistle
- Docks
- And Others

With regard to planting we believe the site has the following species of plants:

- Agapanthus
- Fuschia
- Cordyline Palm
- Torbay Palm
- Golden Privet
- Berberis
- Ilex
- Rosehip
- And Others

The Contractor shall employ a suitably qualified landscaping contractor to survey the planting and identify weeds and suitable plants to remain.

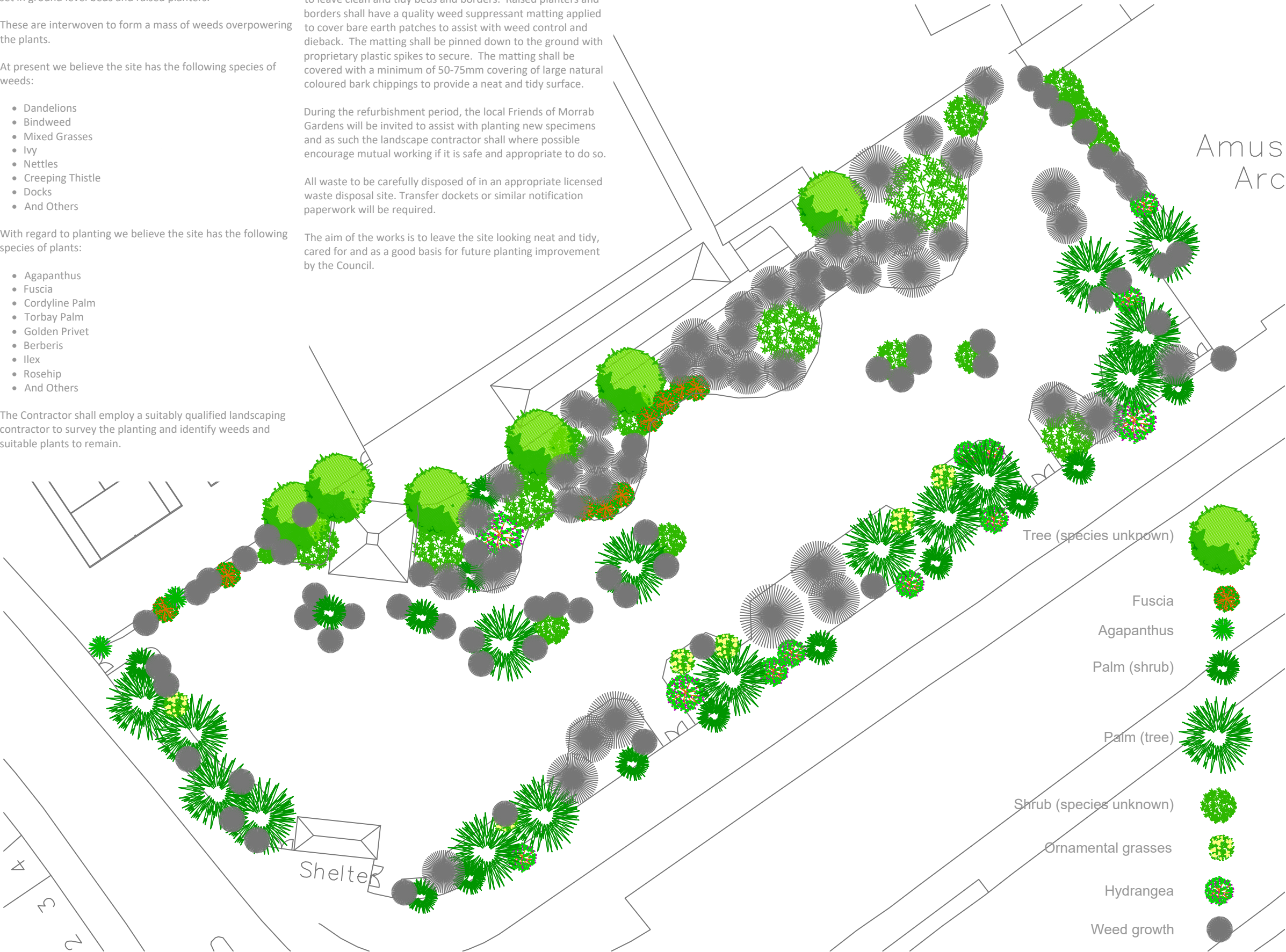
The Contractor shall allow for removing weeds by means of physical removal / digging or using an appropriate weed killer such as Selective Glyphosate, SBR Brushwood Killer, Weedol Lawn Killer, Round Up Pro.

Weeds shall be removed along with unhealthy plant specimens to leave clean and tidy beds and borders. Raised planters and borders shall have a quality weed suppressant matting applied to cover bare earth patches to assist with weed control and dieback. The matting shall be pinned down to the ground with proprietary plastic spikes to secure. The matting shall be covered with a minimum of 50-75mm covering of large natural coloured bark chippings to provide a neat and tidy surface.

During the refurbishment period, the local Friends of Morrab Gardens will be invited to assist with planting new specimens and as such the landscape contractor shall where possible encourage mutual working if it is safe and appropriate to do so.

All waste to be carefully disposed of in an appropriate licensed waste disposal site. Transfer dockets or similar notification paperwork will be required.

The aim of the works is to leave the site looking neat and tidy, cared for and as a good basis for future planting improvement by the Council.



Amus
Arc



Certificate No:
A12036

NOTES:

1. This drawing is to be read in conjunction with all relevant Engineers drawings and the Specification.
2. The Contractor is responsible for all dimensions and for the correct setting out of the work on site. Only figured dimensions are to be used. Any discrepancies are to be reported to The Engineer before proceeding.
3. All materials and workmanship to comply with the current British Standards and Codes of Practice.

	For information	RH	DRW	09/06/2020	
Rev.	Amendment	By	Checked	Date	Approved

Issued Only For Purpose Indicated



GPJ
Consulting
Engineers

4 The Setons, Tolvaddon Energy Park,
Tolvaddon, Camborne, Cornwall. TR14 0HX
Telephone: 01209 612030
Email: enquiries@gpjconsulting.co.uk
Web: www.gpjconsulting.co.uk

Drawing Title
Works to Planting
Alexandra Gardens
Play Park

Project
Penzance Town Council
Condition Surveys
Remedial Works

Design DRW	Date 09/06/2020	Scale at A3 1:400
Drawn RH	Drawing No. 2622 EX06	