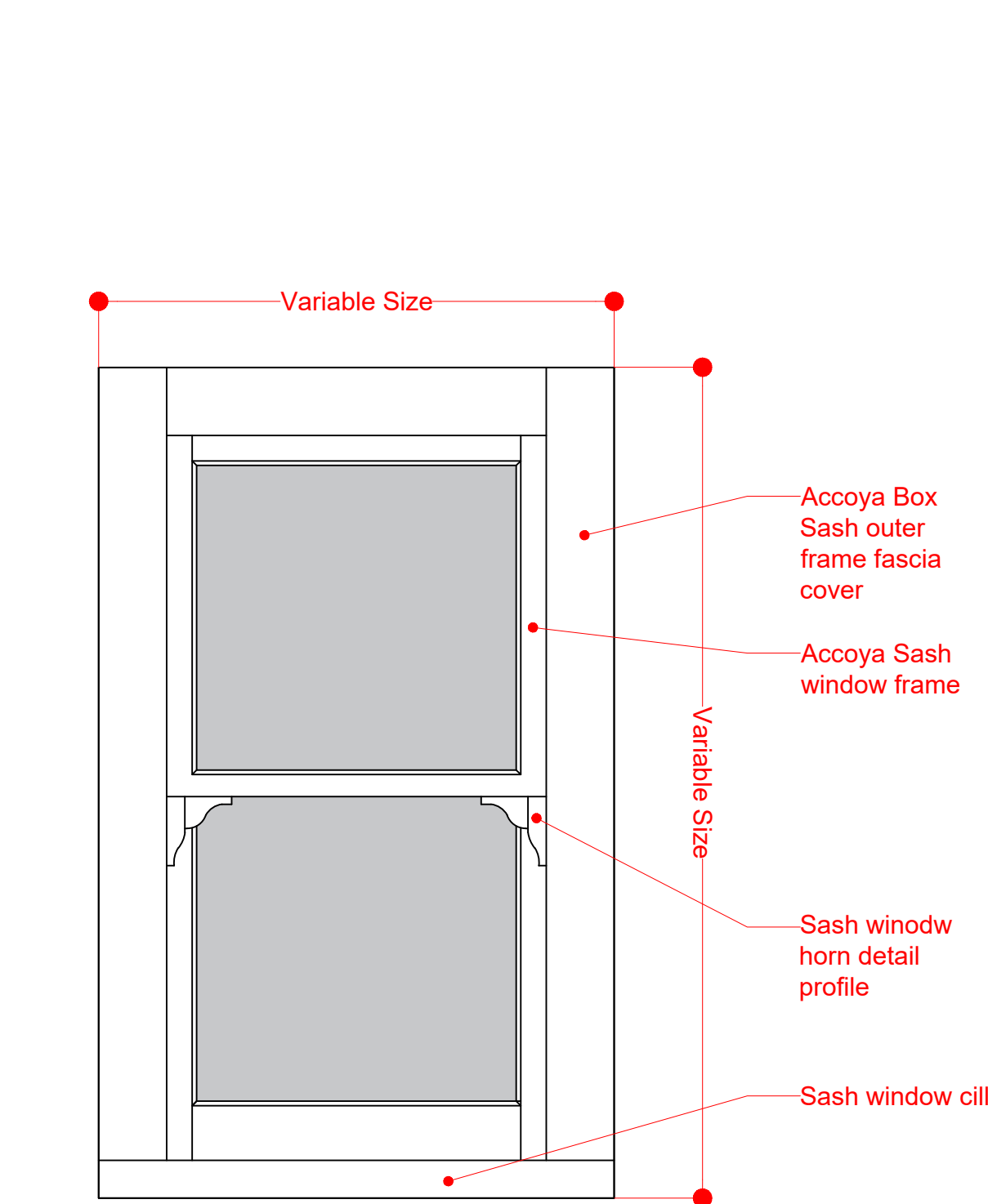
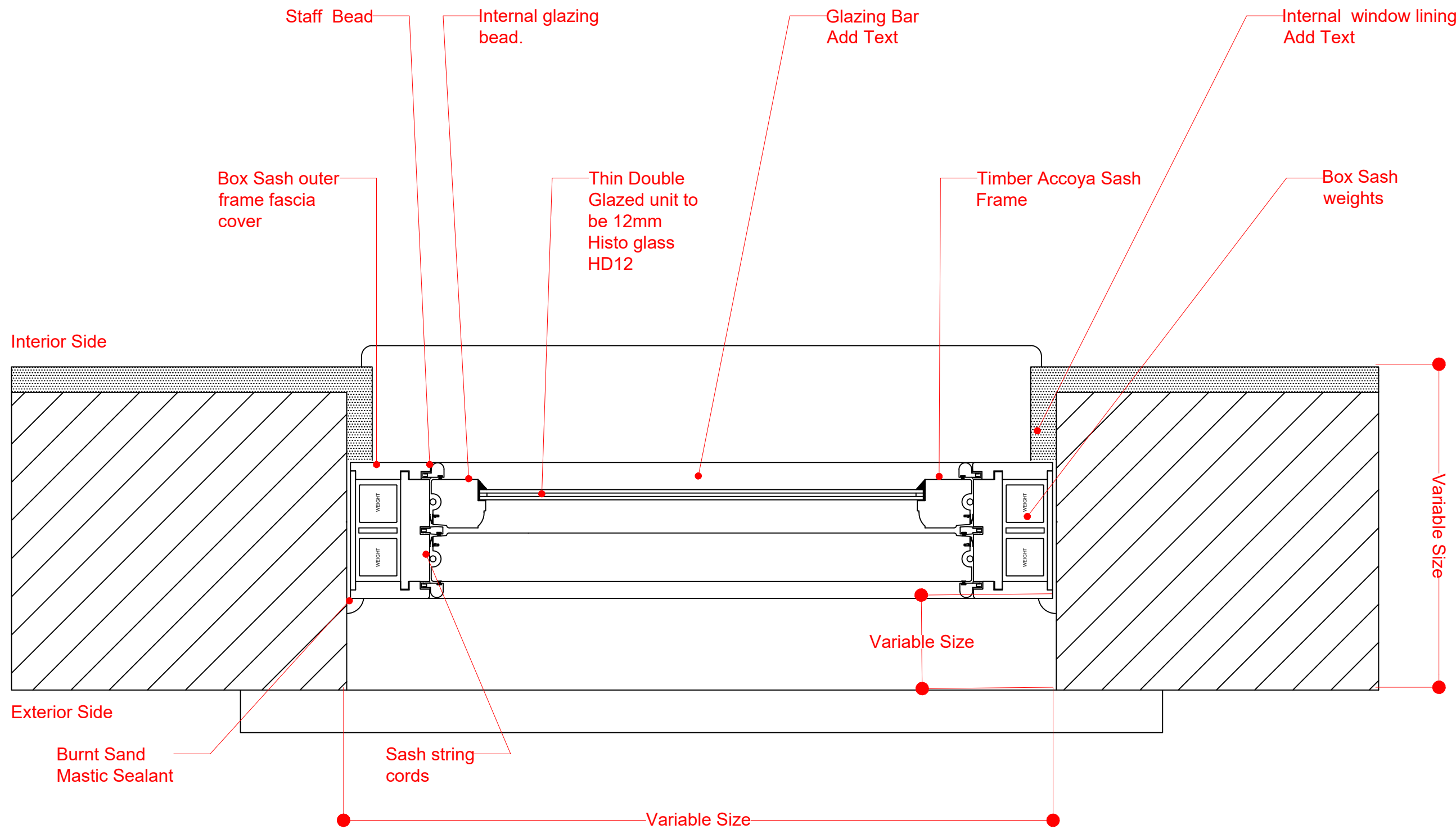


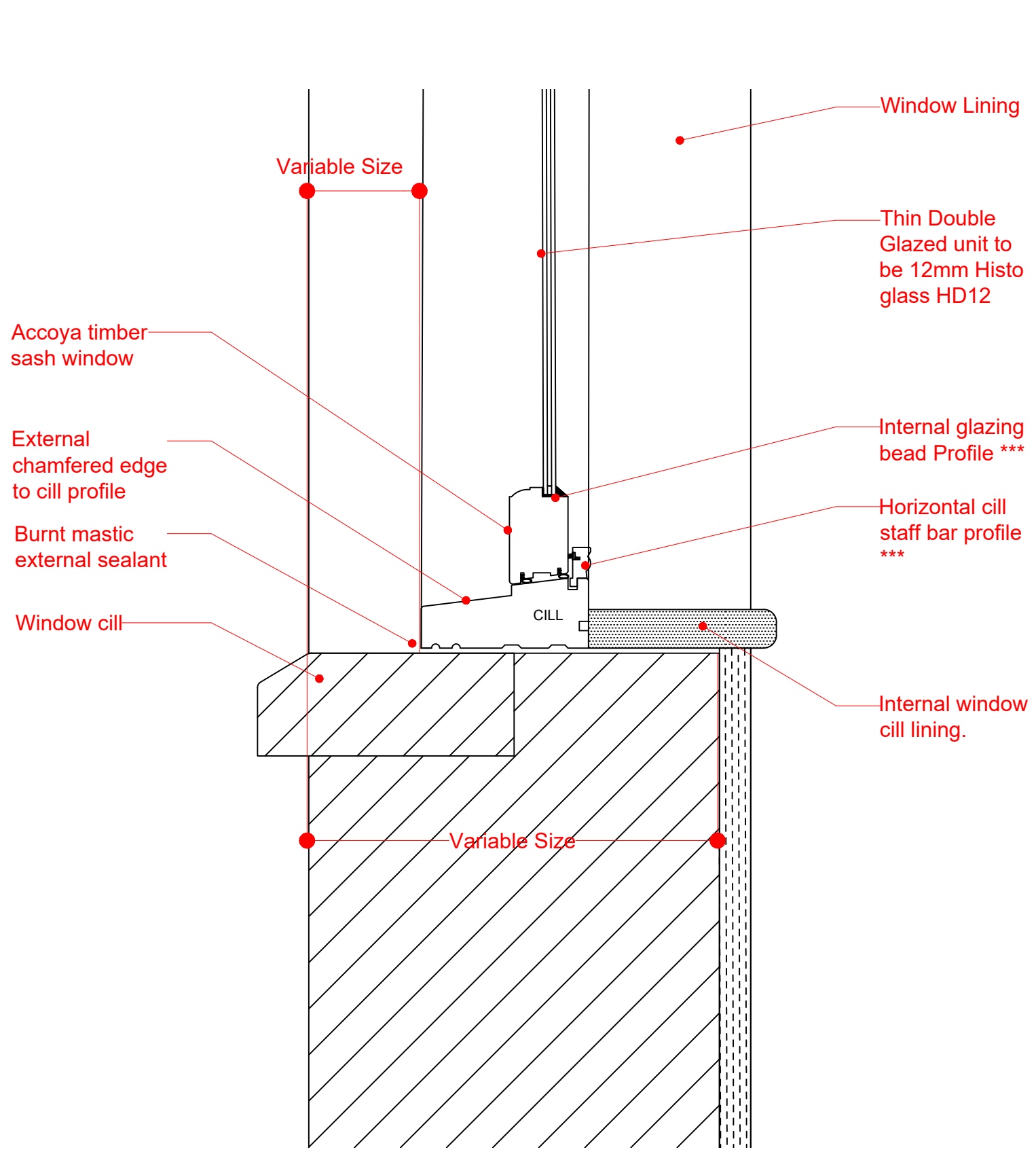
Note : For full specification for detailing and workmanship, refer to supporting HSHAZ "Detail Specification" document.



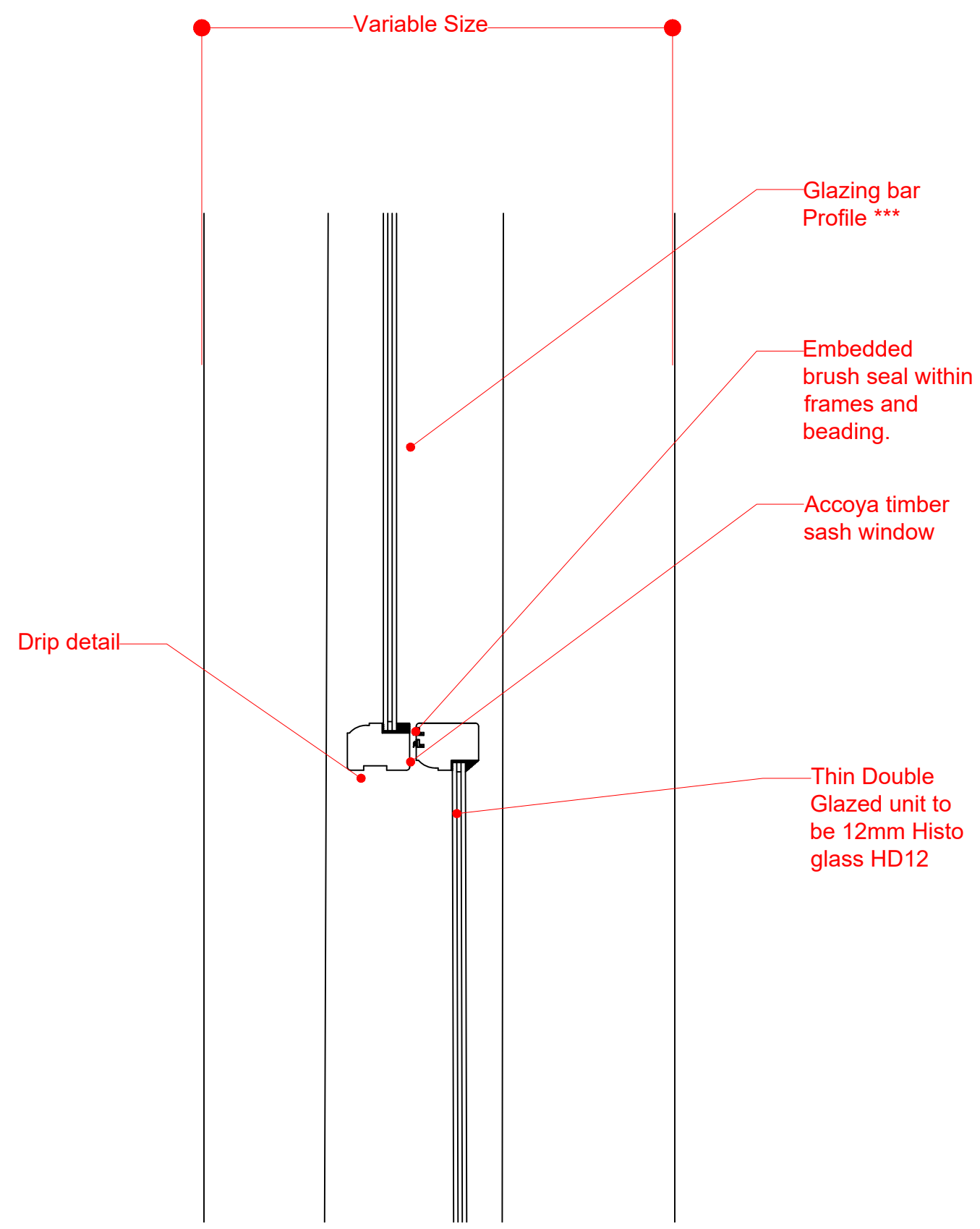
1 Sash Window Elevation  
Scale 1:10 @A3



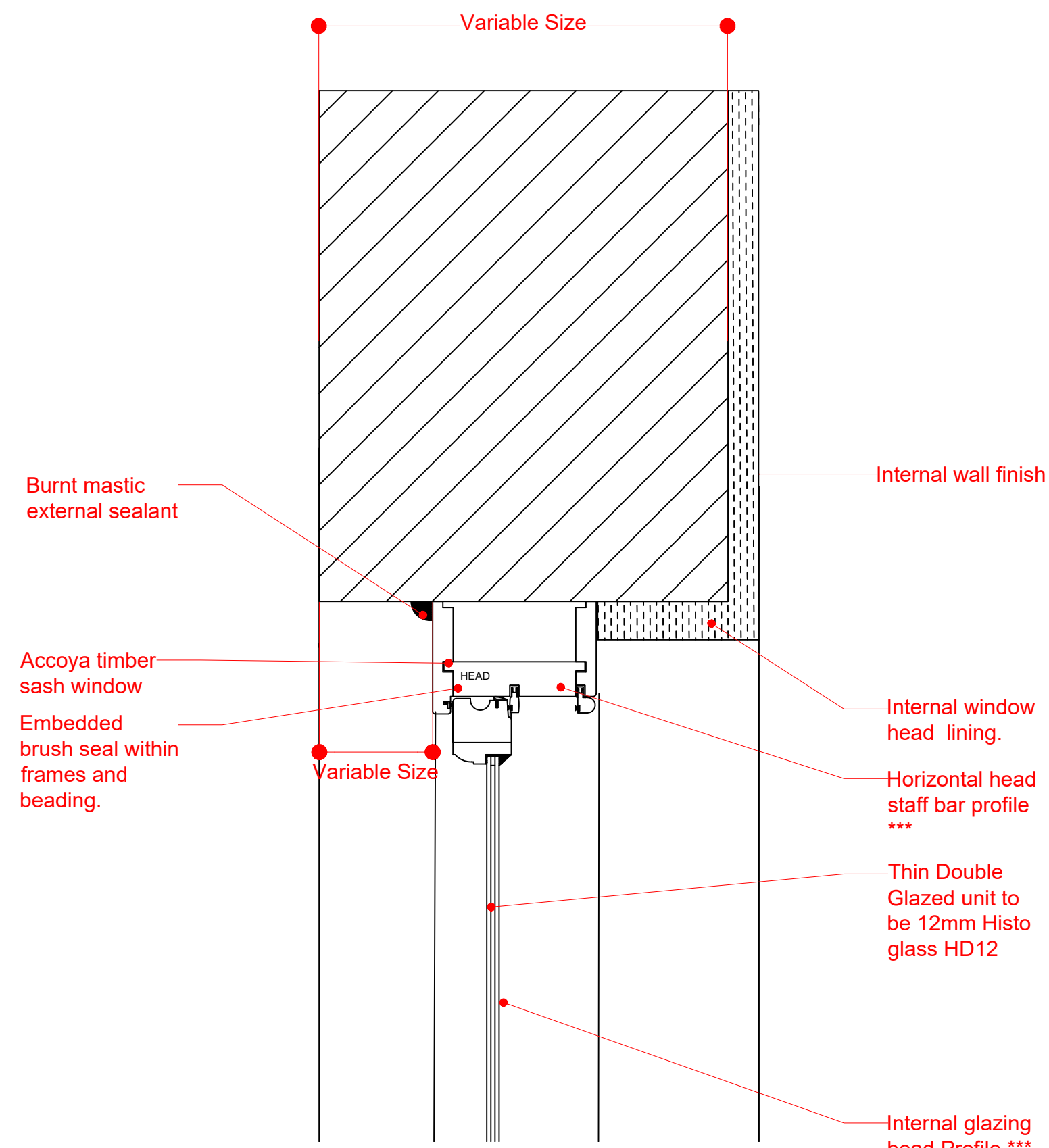
2 Sash Window Plan Detail  
Scale 1:5 @A3



3 Sash Window Cill Detail  
Scale 1:5 @A3



4 Top Sash Cill & Bottom Sash Head Detail  
Scale 1:5 @A3



5 Sash Window Head Detail  
Scale 1:5 @A3

Rev 10/12/2020 Tender Review  
LB

Rev Date/Ints Details

© The moral rights of the author are hereby asserted.  
This drawing and design is the sole property of Buttriss Ltd and must not be reproduced without permission.  
Buttriss Ltd is Registered in England and Wales: 3363173

## Buttriss

41, Bengal St  
Manchester  
M4 6AF

T 0161 236 3303  
E contact@buttriss.net  
W www.buttriss.net

Project Title Bacup Derelict Buildings  
Client Rossendale Borough Council  
Location Bacup

Drawing Title Box Sash Window Ultra Thin Double Glazed  
Detail Drawings  
-

Date 10/12/2020 Scale 1:10 & 1:5  
Checked KC Orig Paper Size A1

Status Tender

Drawing ref Job No Drawing No Revision  
8920 (31) 003 B