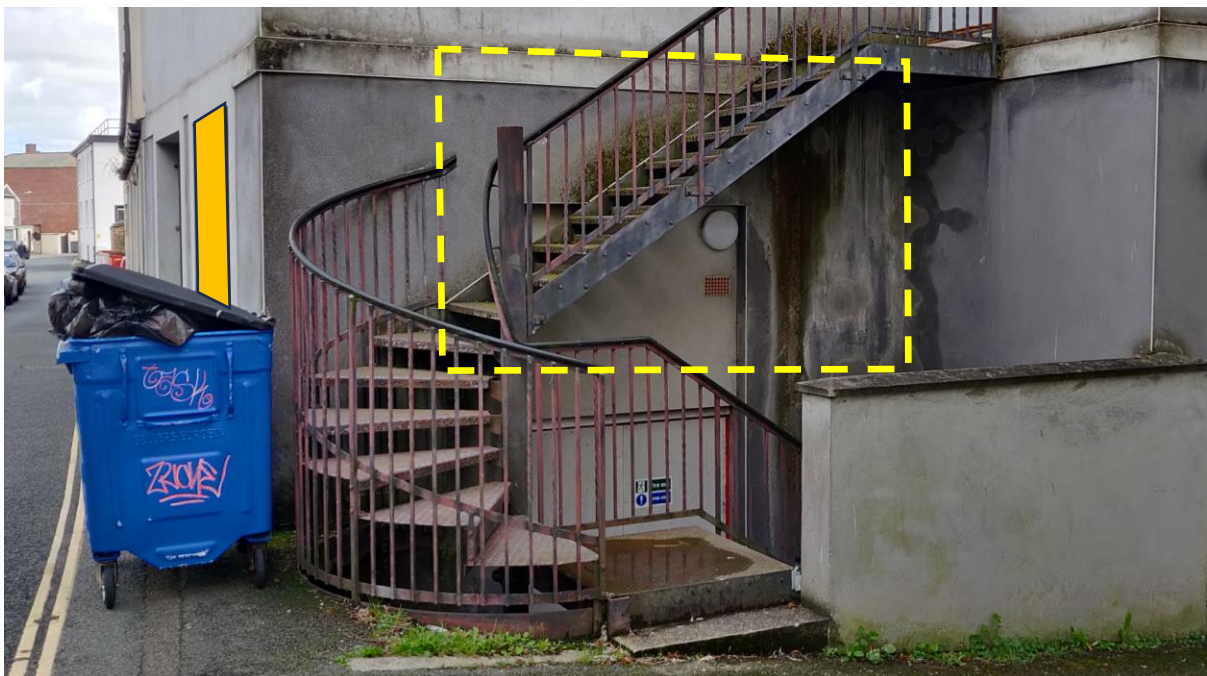


TENDER DOCUMENT

ADDITIONAL PHOTOGRAPHS



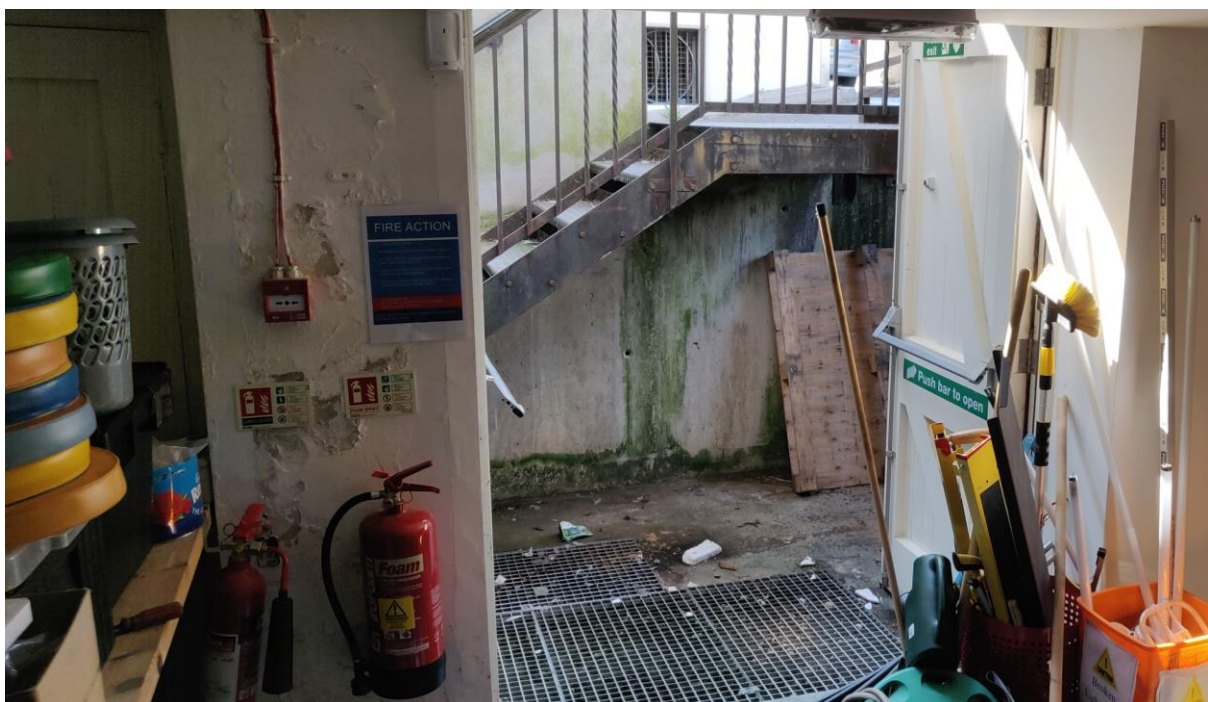
Looking east from Castle Street into The Leats towards the museum. The spiral staircase is by the blue waste bin. This is the route of the new National Grid supply.



The yellow dotted line shows the location of the 'Conservation Laboratory/Studio' located on an internal mezzanine level. The dark yellow window is coloured for reference, see later. The double doors at the bottom of the staircase are one point of access.



Double doors lead to the spiral staircase. The internal stair leads up to the Conservation Laboratory where the new incoming supply will terminate.



Fire doors open. Note the timber door to the left of the photo is specified to be removed and blocked up. The external wall has had exterior insulation applied and is rendered over.



Further photo of door to be blocked up.



Stairs up to Conservation Laboratory. Note the window coloured dark yellow from the photo above.



Conservation Laboratory viewed from inside towards the entrance from the internal stairs. The incoming supply will enter on the end wall. Other switchgear will be mounted on the left wall (as viewed). This room will be cleared before works commence.



Conservation Laboratory viewed from entrance doorway.