

A66 Northern Trans-Pennine Scheme 03a: Centre Parcs West-Penrith to Temple Sowerby

Site Information – Early Works

Keltbray

List of Figures

Figure 1: Site Overview of Temporary Accesses.	3
Figure 2: Temporary Access 1 (NW of site) and Temporary Access 2 (SW of site).	3
Figure 3: Temporary Access 3 (SE of site) and Temporary Access 4 (NE of site).	4
Figure 4: Photo of Area Where TA 1 is (taken from Google Earth).....	4
Figure 5: Photo of Area Where TA 2 is (taken from Google Earth).....	4
Figure 6: Photo of Area Where TA 3 is (taken from Google Earth).....	5
Figure 7: Photo of Area Where TA 4 is (taken from Google Earth).....	5
Figure 8: Topographic Survey of Site Before Early Works Commences.	6
Figure 9: Arboricultural Survey Showing Protection Zones of Trees.	6
Figure 10: Buried Services Around TA 1.....	7
Figure 11: Buried Services Around TA 2.	7
Figure 12: Buried Services Around TA 3.....	8
Figure 13: Buried Services Around TA 4.....	8

Section SI 100 – Site Location

The 4 temporary accesses are located across the A66 between Penrith and Temple Sowerby, either directly off the A66 or an adjacent road as shown in Figure 1.

The red line boundary of each access is shown, as well as their proposed layouts in Figures 2 and 3. These boundaries encompass all the works to construct the access, as well as temporary fencing and topsoil storage. The welfare compound, material storage and waste management are located at the Llama Karma Café area, next to Temporary Access 2, shown in Figure 4, with legend for reference.

A larger general arrangement of the site with boundary shown is available in the Appendix (Large Printout - General Arrangement).

Ground-level photographs of the proposed access locations are also shown below in Figures 4-7.



Figure 1: Site Overview of Temporary Accesses.



Figure 2: Temporary Access 1 (NW of site) and Temporary Access 2 (SW of site).



Figure 3: Temporary Access 3 (SE of site) and Temporary Access 4 (NE of site).



Figure 4: Photo of Area Where TA 1 is (taken from Google Earth).



Figure 5: Photo of Area Where TA 2 is (taken from Google Earth).



Figure 6: Photo of Area Where TA 3 is (taken from Google Earth).



Figure 7: Photo of Area Where TA 4 is (taken from Google Earth).

Section SI 200 – Reports and Surveys

Borehole information available in HE615323-KEL-HGT-03A_AL_SCHEM-RP-CH-000001, see Appendix for link to the file. Here borehole information can be found, including location, findings and details of the borehole surveys.

Topographic Survey below (Figure 8) shows the site topographic survey that was undertaken before early works commences. It also shows the locations of the temporary accesses for geo-reference.

The topographic survey file (HE615323-KEL-VTL-03A_AL_SCHEM-DR-CH-000001) is available in the Appendix, this details invert level and features such as walls, kerbs, manholes and trees.

Drawing HE615323-KEL-EAC-03A_AL_SCHEM-DR-CH-000001 in the Appendix shows areas in which trees are and their protection zones. This arboricultural survey can be seen in Figure 9, with category A and B protection zones shown in green and blue respectively.

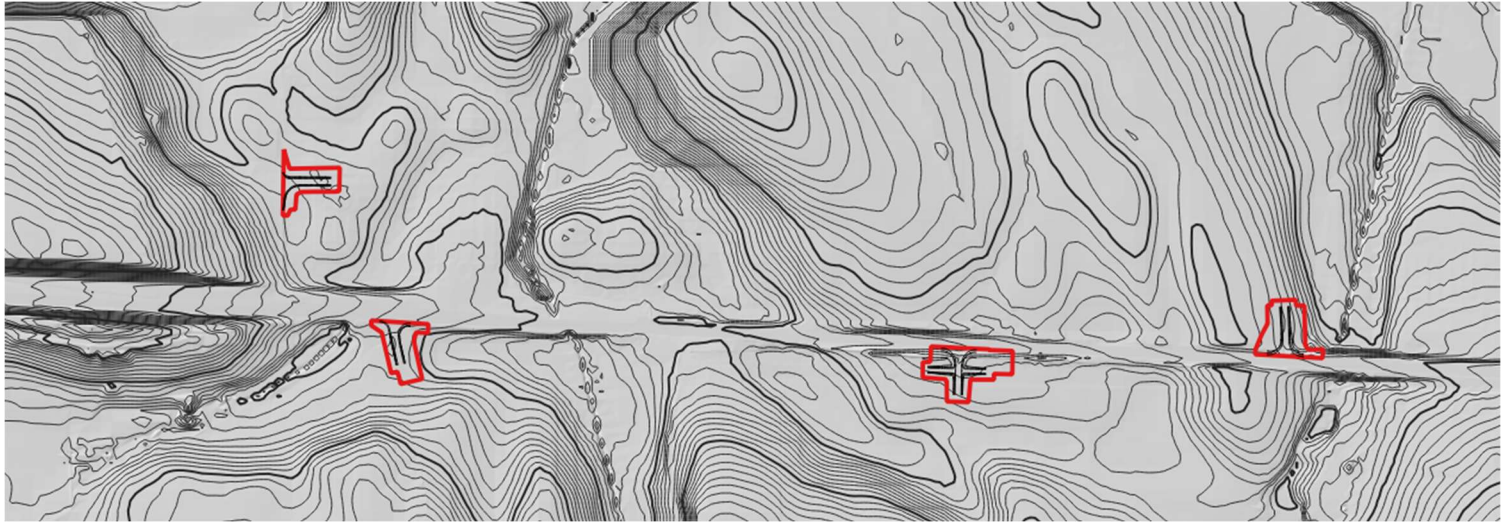


Figure 8: Topographic Survey of Site Before Early Works Commences.



Figure 9: Arboricultural Survey Showing Protection Zones of Trees.

Section SI 300 – Public Information

Planning applications and consent currently in progress and to be attached when signed and acquired.

Section SI 400 – Buried Pipes, Services and Other Objects

Buried services found in HE615323-KEL-VUT-03_AL_SCHEM-DR-CH-000001. Included in this drawing are services including gas mains, telecommunications and fibre optic cable routes, fuel lines, service ducts, and other information relating to utilities.

The utilities drawing also details the above ground services, including overhead cables and substations.

Figure 10 shows the foul water service (orange solid line) which runs underneath Temporary Access 1, which then runs along the A66 carriageway towards the East.

Figure 11 shows the BT services (orange solid lines) running along the carriageway underneath Temporary Access 2, as well as the storm water records (dotted green line) potentially running underneath Temporary Access 2 also.

Figure 12 shows the BT services (orange solid lines) running along the carriageway underneath Temporary Access 3.

Figure 13 has no services running directly underneath Temporary Access 4 but does have the same services as TA 3 running underneath the carriageway opposite.



Figure 10: Buried Services Around TA 1.



Figure 11: Buried Services Around TA 2.

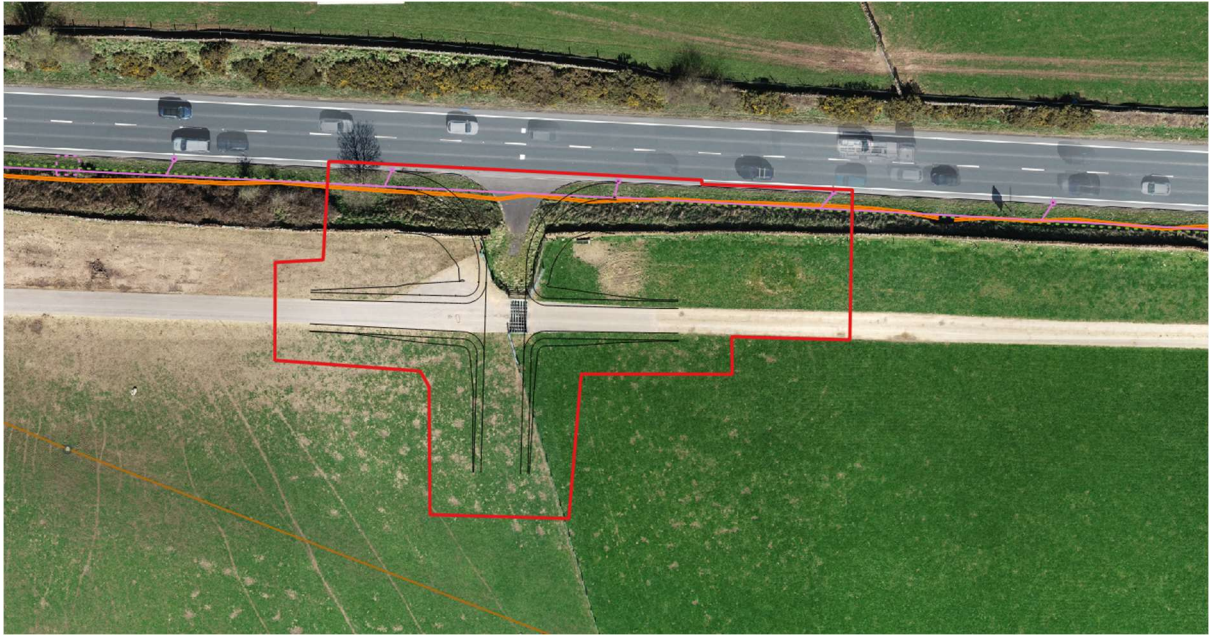


Figure 12: Buried Services Around TA 3.

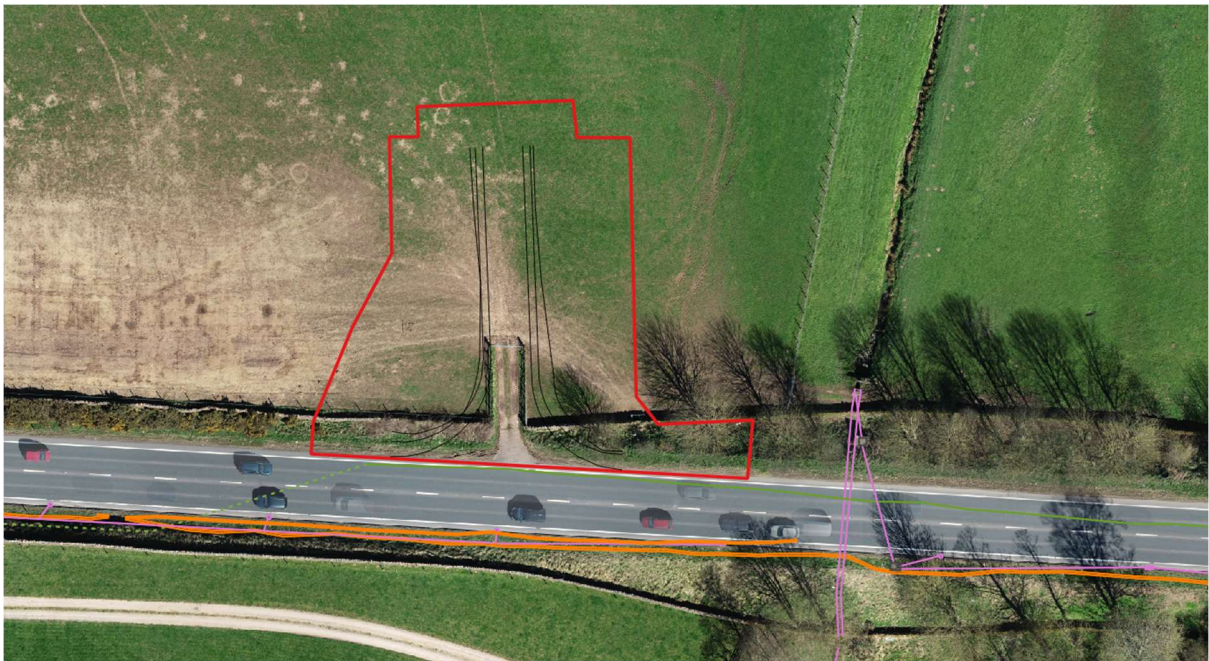


Figure 13: Buried Services Around TA 4.

Section SI 500 – Buildings, Structures and Other Things Adjacent to the Site

Drawing detailing the listed buildings and scheduled monuments can be found in HE615323-KEL-EHR-03_AL_SCHEM-DR-CH-000001.

Appendix

Available on AutoDesk Construction Cloud ([Files - Autodesk Docs](#))

HE615323-KEL-HGT-03A_AL_SCHEM-RP-CH-000001

HE615323-KEL-VTL-03A_AL_SCHEM-DR-CH-000001

HE615323-KEL-HGN-03A_AL_SCHEM-DR-CH-000001

HE615323-KEL-EAC-03A_AL_SCHEM-DR-CH-000001

HE615323-KEL-EHR-03A_AL_SCHEM-DR-CH-000001

HE615323-KEL-VUT-03A_AL_SCHEM-DR-CH-000001