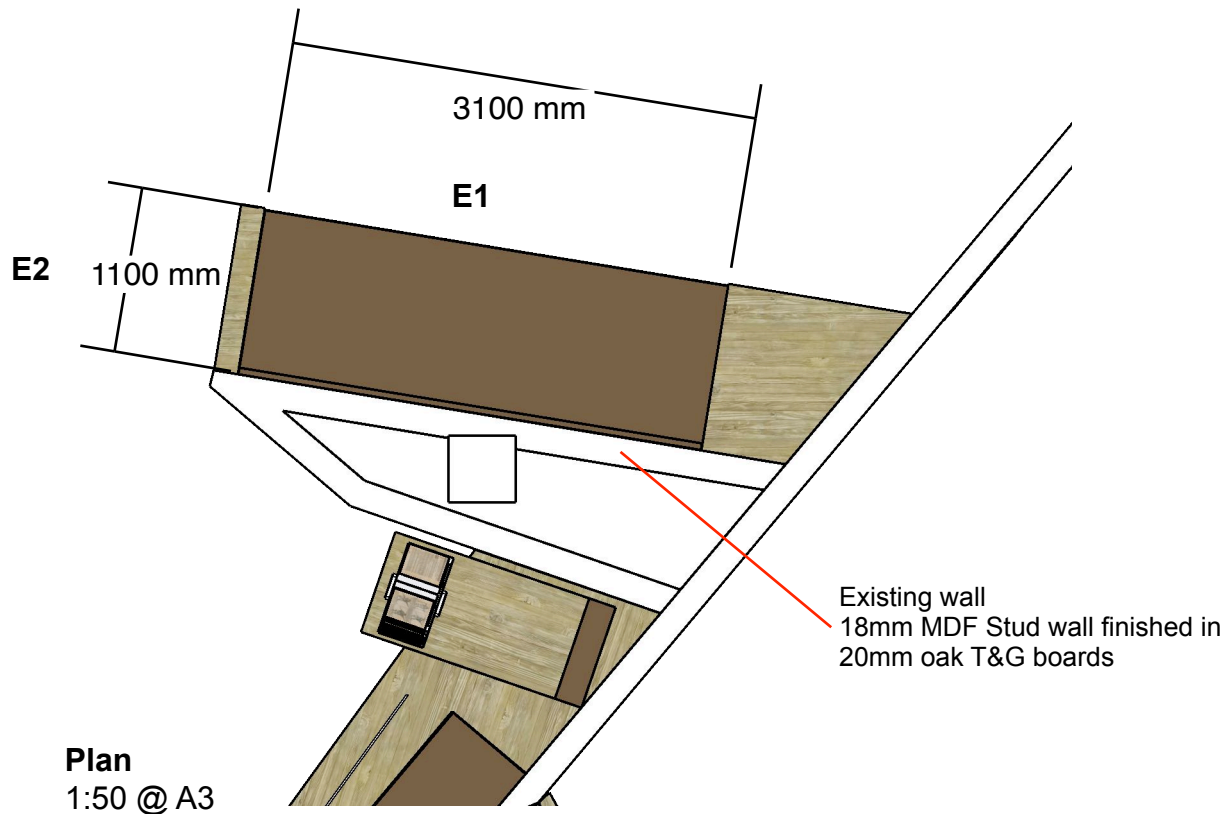
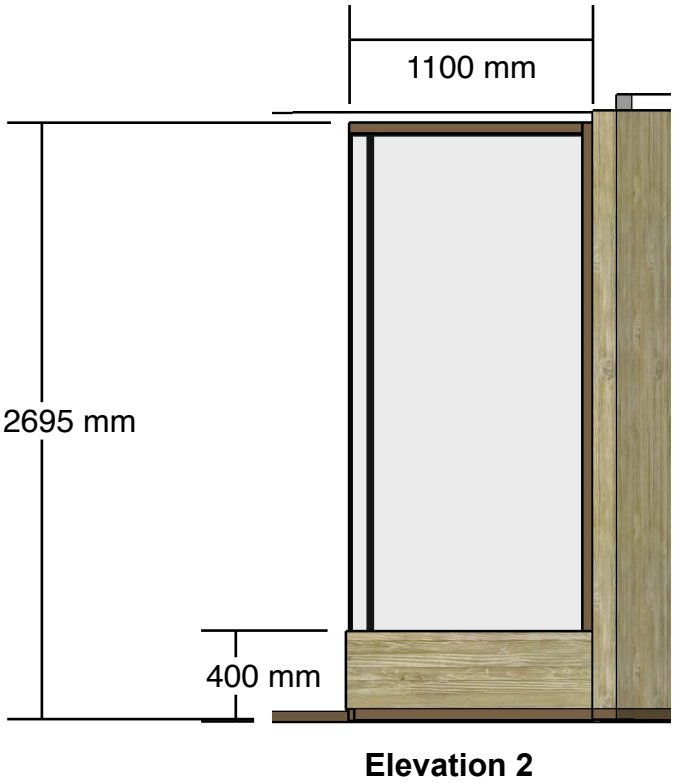
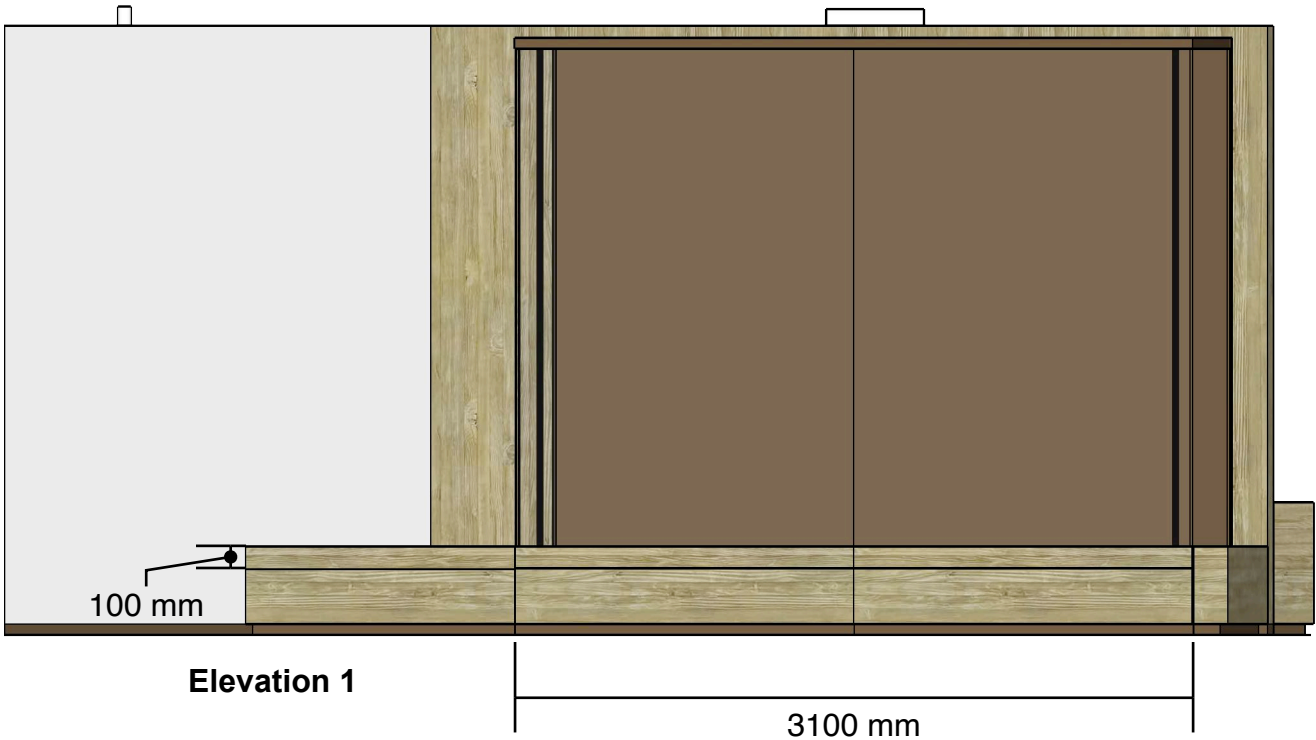


Soldier Gallery - New case location

Case 46 - Section 1



Case 46
External: 3100w x 1100d x 2695h mm
Glass 3 side,
18mm ZMDF dress panels to back finished RAL 7022,
Power from base
Level 1 High security
Internal case height 2245mm

Showcase Finishes
Metal Frames powder-coat:
RAL 7022 Umbra Grey Semi-Gloss

Internal Showcase Bases:
12mm Corian - where possible match to existing cases

Showcase Plinth Cladding:
RAL 7022 Umbra Grey Semi-Gloss faced with green
stained Oak panel to match plinth by existing cases in
gallery

Showcase Plinth Skirting:
RAL 7022 Umbra Grey Semi-Gloss

Lighting Bars:
RAL 7022 Umbra Grey Semi-Gloss

Removable access panels - plinth:
Hinged access panels with lock.

Lighting
2 x LED Light tubes to front
LED Spot lights to top

DO NOT SCALE FROM THIS
DRAWING: ALL DIMENSIONS
TO BE CHECKED ON SITE.
DESIGNER TO BE NOTIFIED OF
ANY DISCREPANCIES.
COPYRIGHT: NATIONAL ARMY
MUSEUM.

**NOTE: DESIGN IS INDICATIVE
ONLY - SPECIALIST CASE
MANUFACTURER TO ADVISE**

Notes:

**All cases must comply
with the National Army
Museum issued tender
document -**

**NAM Soldier Gallery
Display Case Tender**

**Refer to p24 to p29 for full
case specification**

NATIONAL
ARMY
MUSEUM

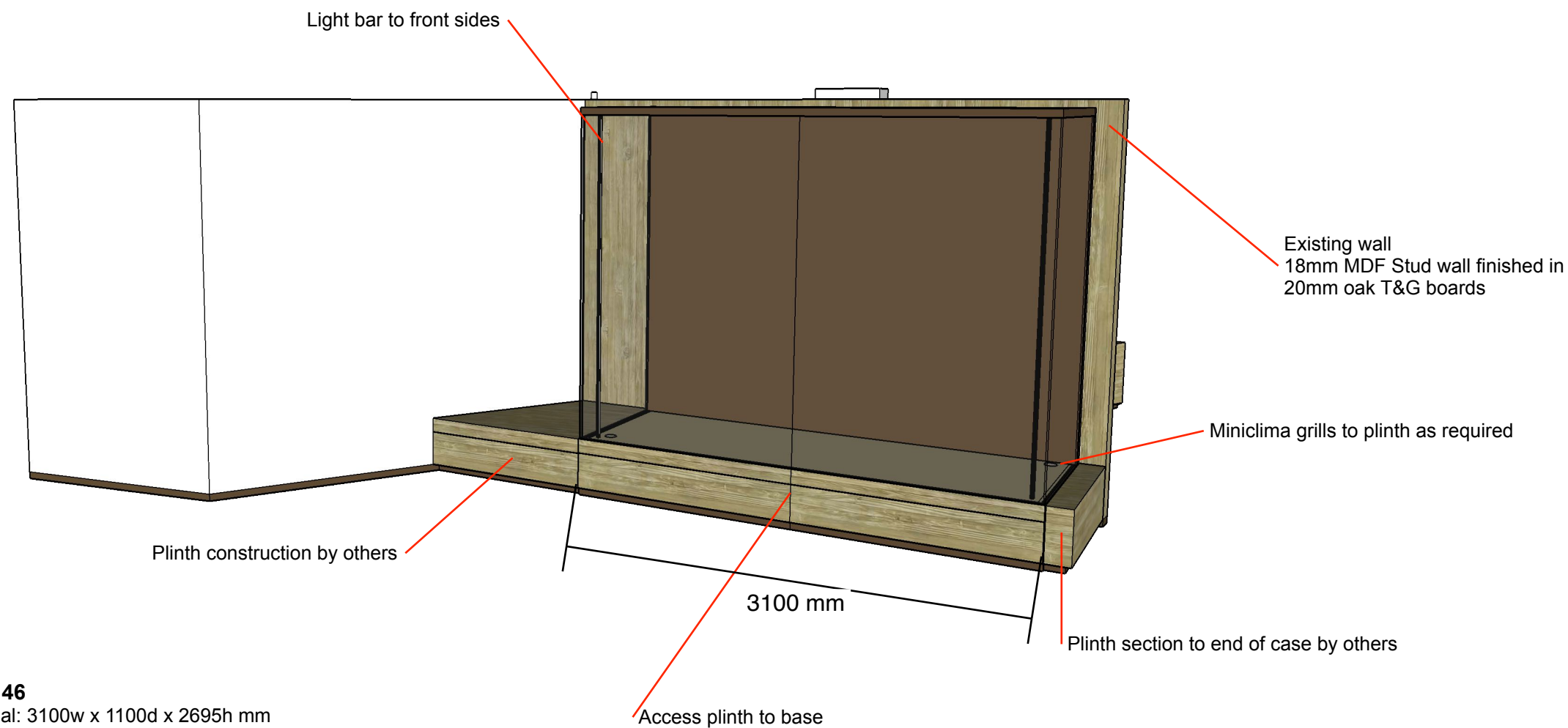
Area:
Soldier Gallery

Project Title:
Case 46

Drawing Title:
General Arrangement

Issue: 1
Date: 05.12.23
Description: GA
Drawn: SG
Checked: JH
Amended:

No part of this drawing may
be reproduced or transferred
to another party without
permission from the NAM.



Case 46

External: 3100w x 1100d x 2695h mm
Glass 3 side,
18mm ZMDF dress panels to back finished RAL 7022,
Power from base
Level 5 High security (at least 4 lamination layers
Internal case height 2245mm

Lighting

2 x LED Light tubes to front
LED Spot lights to top

DO NOT SCALE FROM THIS
DRAWING: ALL DIMENSIONS
TO BE CHECKED ON SITE.
DESIGNER TO BE NOTIFIED OF
ANY DISCREPANCIES.
COPYRIGHT: NATIONAL ARMY
MUSEUM.

**NOTE: DESIGN IS INDICATIVE
ONLY - SPECIALIST CASE
MANUFACTURER TO ADVISE**

Notes:

**All cases must comply
with the National Army
Museum issued tender
document -**

**NAM Soldier Gallery
Display Case Tender**

Locks

High Security locks as
required - see tender doc

Vibration

Case must minimise all
vibration transference onto
objects

**Climate Control and
Monitoring**

As required on cases - see
tender doc

Materials

Materials to be selected from
the approved materials for
showcase use.

NATIONAL
ARMY
MUSEUM

Area:

Soldier Gallery

Project Title:

Case 46

Drawing Title:

General Arrangement

Issue: 1

Date: 07.12.23

Description: GA

Drawn: SG

Checked: JH

Amended:

No part of this drawing may
be reproduced or transferred
to another party without
permission from the NAM.