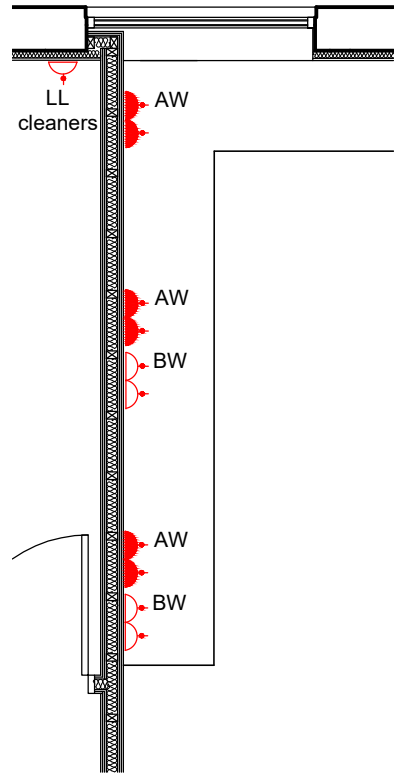


electrical services as proposed 1:50



power sockets to worktop 1:50

- light switch
- Directional pendant light with PIR
- Recessed downlighter
- Directional Wall Mounted Spotlight
- PIR D2D
- Surface Mounted Bulkhead
- Absence Detector to control lighting
- Metal cased RCCA MCA Consumer Unit
- Switched Fused Connection Unit
- Double socket 910mm above FFL
- Double socket below worktop
- External socket
- Mains powered optical smoke alarm with battery back up

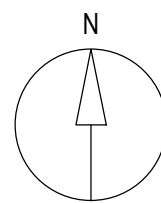
SCHEDULE OF ABBREVIATIONS	
AW	ABOVE WORKTOP
BW	BELOW WORKTOP
CU	CONSUMER UNIT
EF	EXTRACT FAN
HL	HIGH LEVEL
LL	LOW LEVEL

rev. date
* * *

0 3m

Status

- Planning
- Building Regulations
- Tender



client
WARE TOWN COUNCIL
property
PUBLIC TOILETS, PRIORY STREET
WARE, HERTFORDSHIRE, SG12 9AL
project
RE-MODELLING AND REFURBISHMENT
drawing
ELECTRICAL SERVICES
AS PROPOSED

scale
1:50 @ A3
drawn
CRD

drawing no.
WTC_004-06

date
29-07-24
checked
SR

revision
A

iCON Building Consultancy

13 Ducketts Wharf
South Street
Bishop's Stortford
Hertfordshire CM23 3AR

Tel: 01279 653386
Web: www.iconbc.co.uk