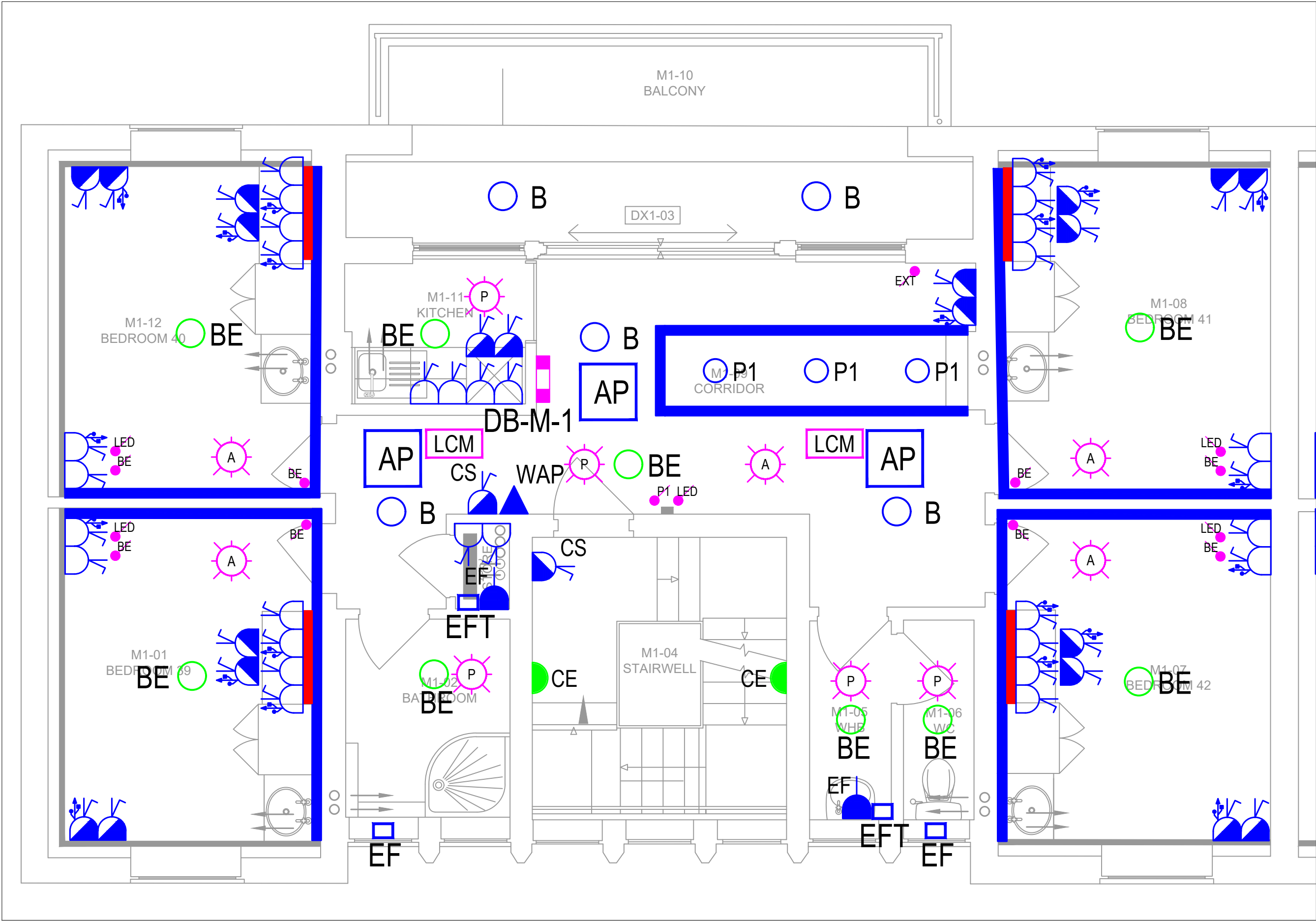
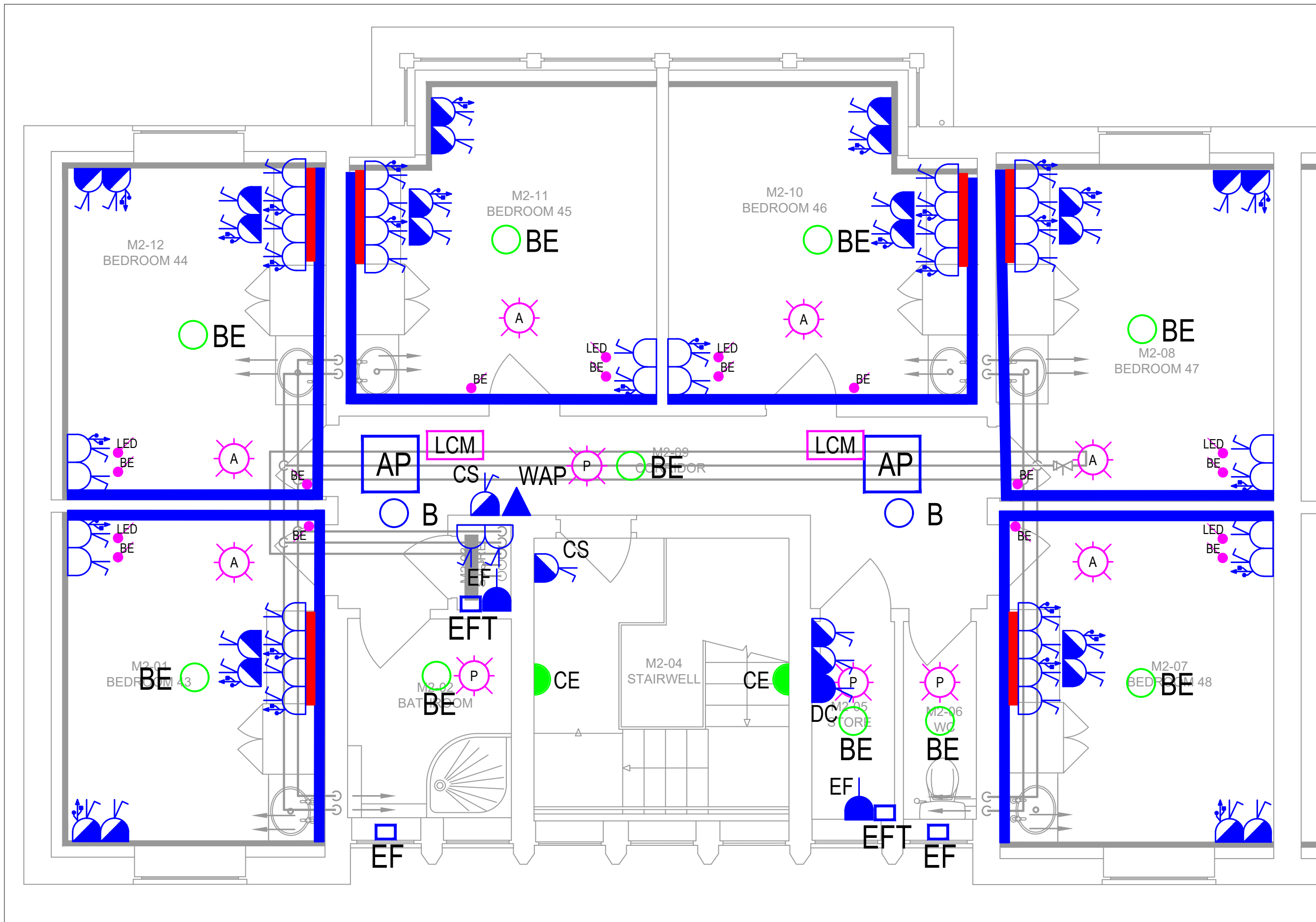


GROUND FLOOR - ELECTRICAL SERVICES LAYOUT



FIRST FLOOR - ELECTRICAL SERVICES LAYOUT



SECOND FLOOR - ELECTRICAL SERVICES LAYOUT

Electrical Services Legend - Milner	
	Double Socket with USB-A & USB-C Outlet
	Double Socket with USB-A & USB-C Outlet @ Low Level
	Double Switched Socket Outlet
	Double Switched Socket Outlet at Low Level
	Fused Spur with flex outlet
	Access Panel
	Nuair Cyfan window mounted extract fan - 24V
	Nuair Cyfan remote 230V-24V transformer
	Double Data Outlet - Cat 6
	Single Data Outlet - Cat 6
	Red Cleaners Socket at Low Level
	Wall Mounted Dado Trunking
	New 250A, Split Metered Dist. Board with 16 & 6 TPN Ways
<b>NOTE:</b> All distribution boards to be Schneider Acti9 Isobar B P TP&N split metered distribution boards complete with incoming isolator and 2no. RS485 output meters.	
<b>NOTE:</b> For the purposes of tender allow for 75% of the distribution boards listed above to be supplied with 20A SPN RCBos.	

Electrical Services Legend - Milner	
	RGBW LED Lighting Strip and LED light shelf profile
	Single Zone RGBW LED Controller
	Switch (2 = 2-Way, 3 = 3-Way, R = Retractive, EXT = External)
	Detector (A = Absence, P = Presence, D = Daylight)
	Hanging pendant - specified by client/architect
	Luceco Atlas LBH213K Surface Bulkhead, BE = Emergency
	Luceco Atlas Em . Bulkhead with PIR - LBH214KMW3M-03
	DALI Lighting Control Module
<b>NOTE:</b> Lighting to be designed and supplied by Luceco, Jeremy Pinnock, E: jeremy.pinnock@luceco.com, M: 07970 356296	
<b>NOTE:</b> Design and Supply of the LED Controllers and RGBW Strip by Bright Green Technology, Contact Jonty Rugg, E: jonty.rugg@brightgreentechnology.com, M: 07584 156924	
<b>NOTE:</b> Lighting controls to be designed, supplied and commissioned by Lighting Controls UK Ltd, Contact Martin Snarey M: 07772 660174, E: martin.snarey@lightingcontrols.ltd.uk.	

Electrical Services Scope Of Work - Fit Out

1. NEW USB DSSO ADJACENT EACH BED TO BE INSTALLED WITHIN NEW BEDHEAD UNIT (REFER TO ARCHITECTS DETAILS)

2. WHERE OUTLETS ARE INSTALLED WITHIN NEWLY INSULATED WALLS CABLING SHALL BE INSTALLED WITHIN RECESSED CONDUIT.

3. WHERE OUTLETS ARE INSTALLED WITHIN INTERNAL WALLS THE CONTRACTOR SHALL ALLOW TO CHASE WALLS TO FACILITATE RECESSED INSTALLATION OF CABLING AND TO MAKE GOOD UPON COMPLETION.

4. WIRING AT HIGH LEVEL SHALL BE CONTAINED ON THE NEW LED LIGHTING SHELF OR WITHIN CEILING VOIDS TO ENSURE ALL CABLING IS RECESSED.

5. ALL SUPPLIES ARE TO BE FED FROM NEW DISTRIBUTIONS BOARDS SHOWN AND INSTALLED WITH LSOH T&E.

6. THE LED LIGHTING STRIP SHALL BE INSTALLED ON A NEW LED LIGHTING SHELF TO BE SUPPLIED AND INSTALLED BY THE MAIN CONTRACTOR, THE SHELF SHALL BE OF SUITABLE SIZE TO CONCEAL THE LED STRIP AND NEW CABLING FOR THE NEW POWER AND LIGHTING CIRCUITS.

7. THE LED CONTROLLERS SHALL BE SECURELY FIXED TO THE WALL.

8. AN ABSENCE DETECTOR SHALL BE INSTALLED INLINE WITH THE LED DRIVER TO ENSURE LIGHTS SWITCH OFF WHEN ROOMS ARE UNOCCUPIED.

9. ELECTRICAL CONTRACTOR TO PROVIDE DISTRIBUTION BOARD SCHEDULE WITH PROPOSED CABLE SIZES FOR APPROVAL BY THE ENGINEER BEFORE COMMENCING WORKS.

10. PROVIDE ALL NECESSARY TESTING AND COMMISSIONING OF NEW
- ELECTRICAL SYSTEMS.

11. PROVIDE UPDATED RECORD DRAWINGS AND OPERATION AND MAINTENANCE MANUALS UPON COMPLETION OF THE WORKS.

12. PROVIDE UPDATED DISTRIBUTION BOARD SCHEDULES UPON COMPLETION OF THE WORKS.

13. ALL DATA TO BE RUN TO GROUND FLOOR DATA CABINET IN STORE WITHIN EACH HALL.

14. ALLOW FOR INVERTED CABLE TRAY WITHIN CEILING VOID OF ALL CORRIDORS TO CONTAIN ALL CABLING.

15. ALLOW FOR SURFACE MOUNTED GALVANISED CONDUIT WITHIN STORES, STAIRWELLS, TOILETS AND WHB ROOMS.


16. ALLOW FOR PLASTIC SURFACE MOUNTED CONDUIT WITHIN BATHROOMS.

14. CONTRACTOR WILL BE RESPONSIBLE FOR DEVELOPING THE DESIGN FROM THE TENDER DRAWINGS TO COMPLETION TO INCLUDE FINALISING POSITIONS OF ALL OUTLETS WITH THE ARCHITECT, CO-ORDINATING FINAL OUTLET POSITIONS WITH OTHER TRADES, PREPARING CONSTRUCTION ISSUE DRAWINGS AND DISTRIBUTION BOARD SCHEDULES FOR APPROVAL BY THE ENGINEER.

North

NOTES - ELECTRICAL SERVICES

- THIS DRAWING IS TO BE READ IN CONJUNCTION WITH THE ELECTRICAL COVER SHEET, TYPICAL ELECTRICAL DETAILS DRAWING AND ELECTRICAL SPECIFICATION DOCUMENT.
- DO NOT SCALE FROM DRAWINGS, REFER TO ARCHITECTS DRAWINGS FOR SETTING OUT
- FIRE RATE PENETRATIONS & UTILISE KINGSPAN SAFIRE FIRE INSERTS ON ALL ELECTRICAL OUTLETS MOUNTED IN FIRE RATED WALLS - REFER TO ARCHITECTS FIRE STRATEGY DRAWINGS.
- CO-ORDINATE ALL SUPPLIES FOR EQUIPMENT WITH FINAL LOCATIONS AND HEIGHTS BEFORE INSTALLATION.
- CAREFUL ATTENTION SHALL BE GIVEN TO THE SOCKET OUTLET SYMBOL DENOTING THE REQUIREMENT FOR INTEGRATED USB A&C OUTLETS
- LAYOUT IS TO BE FULLY COORDINATED WITH EXISTING CONDITIONS, ARCHITECTURAL DETAILS AND OTHER SERVICES - FINAL LAYOUT TO BE APPROVED BEFORE COMMENCING INSTALLATION.
- INSTALL EQUIPMENT AND SERVICES ACCORDING TO MANUFACTURER'S INSTRUCTIONS AND IN HARMONY WITH APPLICABLE CODES & STANDARDS

Rev	Description	Date
Client		
Bedford College Group		
Site		
Shuttleworth College, Old Warden Park, SG189DX		
Project		
Halls of Residence - Fit Out		
		
Construction & Engineering Services Ltd		
www.pandaces.co.uk T: 01908 991130		
Title		
MILNER ELECTRICAL SERVICES LAYOUT - FIT OUT		
Number		
02-15-E-LX-03		
Revision		Date
T00		01/12/23
Scale		Status
1:100 at A1		Tender