

DISCLAIMER NOTES:

DO NOT SCALE THIS DOCUMENT - USE FIGURED DIMENSIONS ONLY

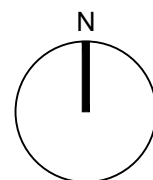
ALL DIMENSIONS MUST BE CHECKED ON SITE PRIOR TO COMMENCEMENT OF ANY RELATED WORKS.

THIS DOCUMENT IS COPYRIGHT OF THE ORIGINATOR, IT MUST NOT BE ALTERED, REPRODUCED OR DISTRIBUTED WITHOUT PRIOR CONSENT.

THIS DOCUMENT MUST BE READ IN CONJUNCTION WITH ALL SUPPORTING DOCUMENTS PRODUCED BY THE ORIGINATOR AND OTHER PROJECT DISCIPLINES.

OS MAPPING OBTAINED FROM PROMAP LICENCE No. 100022432  
REPRODUCED BY BERRYS UNDER OS LICENCE No. 100003668

SCALE BAR & NORTH POINT:



Notes:

- Contractor to check all measurements and levels of tie ins with existing drainage prior to construction. Where discrepancies are found these shall be raised with the Berrys engineering team.
- Total catchment area 0.215ha.
- Refer to Flow model report for manhole schedule.
- Indirect S106 connection agreement required with Thames Water for the sewer connection works, contractor to obtain prior to commencing works on this.
- Temporary cap seals to be provided on the downstream side of all drains and sewer systems under construction to prevent debris entering the downstream system. It is also recommended that all manholes and inspection chambers are fitted with protective caps during construction.
- The new drainage system must be free of any debris or defects upon commissioning.

REV	DESCRIPTION	DATE	BY	CHKD
	BEECH HOUSE SHREWSBURY BUSINESS PARK SHREWSBURY SHROPSHIRE SY2 6FG		TEL: 01743 271697 shrewsbury@berrys.uk.com www.berrys.uk.com	
ORIGINATING OFFICE:				

**BERRYS**

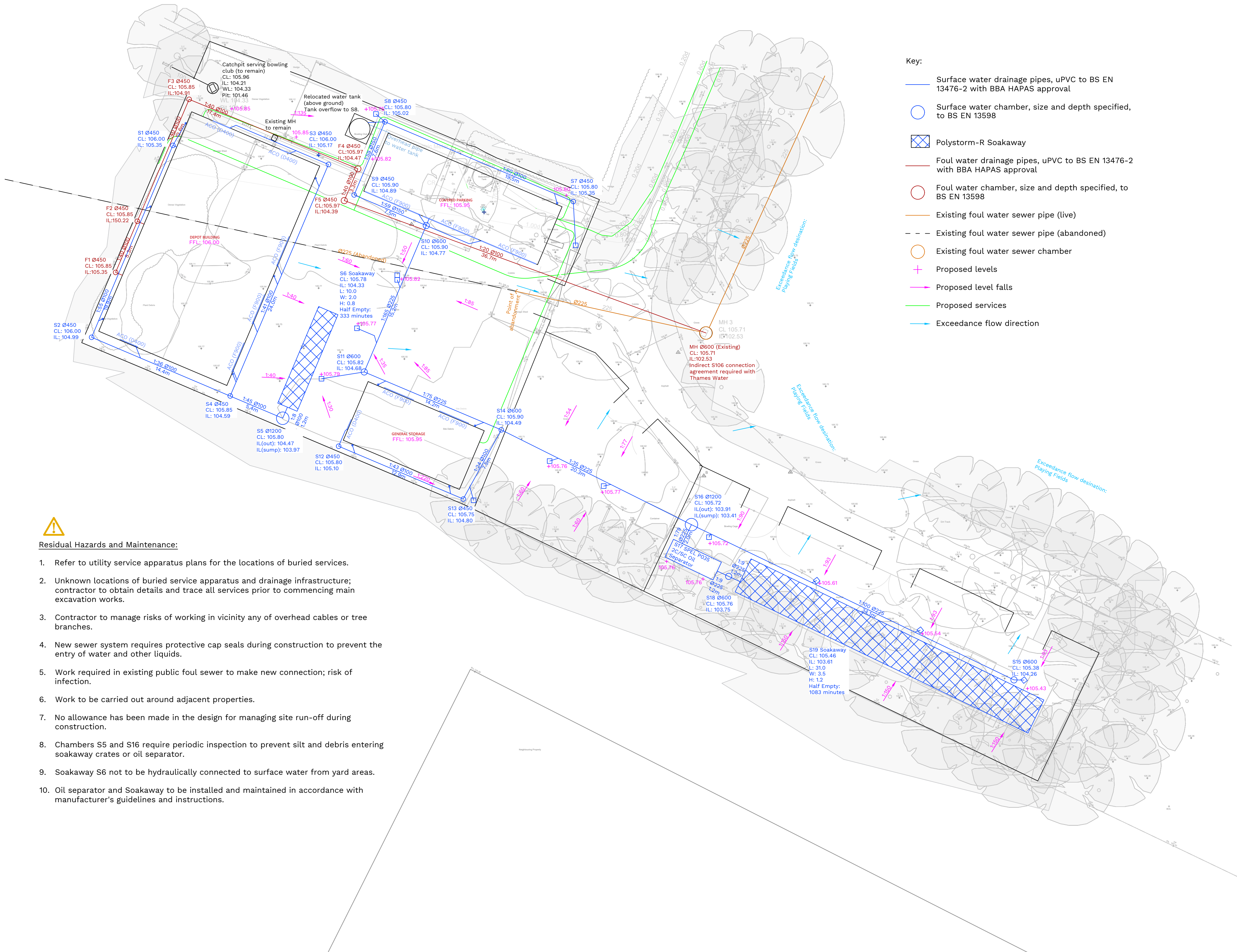
STATUS: **PRELIMINARY**

CLIENT: **Witney Town Council**

PROJECT: **Detailed Drainage Design  
For New Depot**

DRAWING: **Foul And Storm Water Design**

SCALE @ A1:	DRAWN BY:	CHKD BY:	DATE:
1:200	JGH	RH	12.06.25
DRAWING No:	REVISION:		
SA53162 -BRY-ST -PL- C -	501 _A		



**Residual Hazards and Maintenance:**

- Refer to utility service apparatus plans for the locations of buried services.
- Unknown locations of buried service apparatus and drainage infrastructure; contractor to obtain details and trace all services prior to commencing main excavation works.
- Contractor to manage risks of working in vicinity any of overhead cables or tree branches.
- New sewer system requires protective cap seals during construction to prevent the entry of water and other liquids.
- Work required in existing public foul sewer to make new connection; risk of infection.
- Work to be carried out around adjacent properties.
- No allowance has been made in the design for managing site run-off during construction.
- Chambers S5 and S16 require periodic inspection to prevent silt and debris entering soakaway crates or oil separator.
- Soakaway S6 not to be hydraulically connected to surface water from yard areas.
- Oil separator and Soakaway to be installed and maintained in accordance with manufacturer's guidelines and instructions.