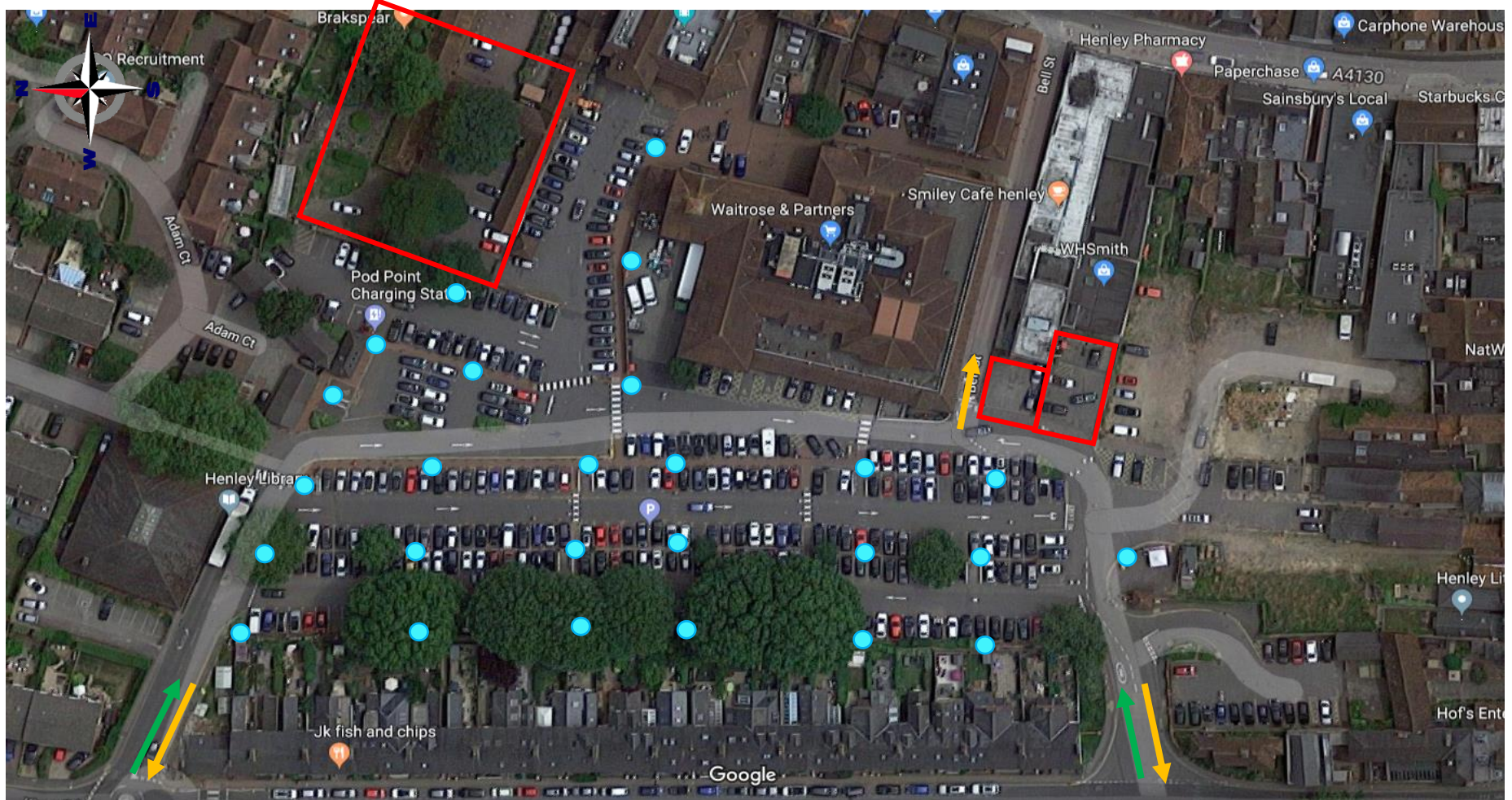


Henley-on-Thames Car Park Maps

This document contains maps of Kings Road car park and Greys Road car park in Henley-on-Thames, with markings to highlight private parking areas, areas of development, entry/exit points, and areas which would preferably be measured in a parking monitoring system.

Kings Road Car Park

Map 1: Red boxes delineate private parking areas, green and yellow lines show entry/exit points, yellow line shows exit-only point, blue circles represent lampposts



Map 2: Area to be monitored (maximum) – a smaller area could be monitored, e.g. 70% of parking, and the data then scaled up as a likely representation of the entire car park



This is a detailed street map of the downtown area of St. John's, Newfoundland. The map features several prominent streets, including Water Street running vertically on the right side, Market Street running horizontally across the middle, and King's Road at the bottom. Other visible streets include Bell Street, Second Way, and Adam Court. Key landmarks and buildings are labeled, such as the City Hall, the Bank, the Post Office, and the Library. A large, irregularly shaped area in the center-right of the map is outlined in red, indicating a specific zone of interest. This area appears to encompass several large commercial or institutional buildings. The map also shows smaller details like bus stops, parking areas, and individual lots. The overall color scheme uses shades of orange, yellow, and green to differentiate between different types of land use or ownership.

Greys Road Car Park

Map 1: Red boxes delineate private parking areas, green and yellow lines show entry/exit points, blue circles represent lampposts



Map 2: Area to be monitored (maximum) – a smaller area could be monitored, e.g. 70% of parking, and the data then scaled up as a likely representation of the entire car park



